

# Signaling units

Harmony<sup>®</sup> XVS sirens and electronic alarms

Catalog

February 2015



# How can you fit a 6000-page catalog in your pocket ?

Schneider Electric provides you with the complete set of industrial automation catalogs all on a handy USB key for PC or in an application for tablets



## Digi-Cat, a handy USB key for PC



- > Convenient to carry
- > Always up-to-date
- > Environmentally friendly
- > Easy-to-share format



Contact your local representative to get your own Digi-Cat



## e-Library, the app for tablets

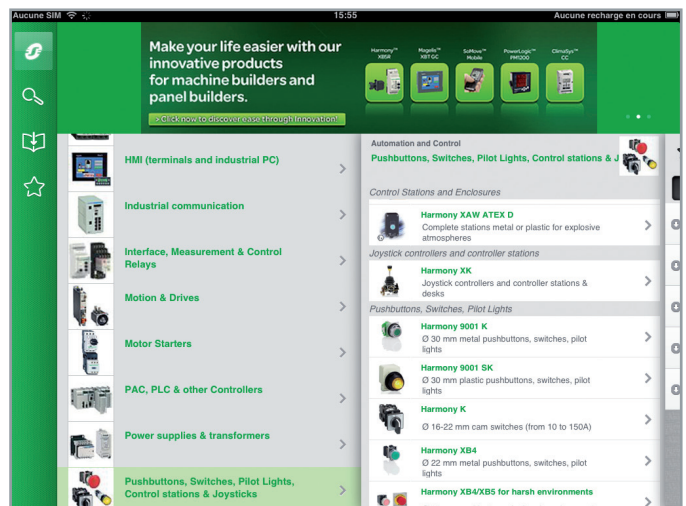
If you have an iPad®:

- > Go to the App Store and search for e-Library
- > or scan the QR code



If you have an Android tablet:

- > Go to the Google Play Store™ and search for eLibrary
- > or scan the QR code



# General contents

## Harmony® XVS sirens and electronic alarms

|  |               |
|--|---------------|
| ■ General presentation.....            | page 2        |
| <b>Selection guide</b> .....           | <b>page 4</b> |
| ■ <b>Presentation</b>                  |               |
| □ Sound units Harmony type XVS.....    | page 8        |
| □ Software configuration.....          | page 8        |
| ■ <b>References</b>                    |               |
| □ Editable voice alarms.....           | page 9        |
| □ Sirens and electronic alarms.....    | page 9        |
| ■ <b>Product reference index</b> ..... | page 10       |

# Signaling units

## Sound units

### Harmony type XVS

#### Multi sound sirens and alarms

### Harmony® XVS editable sound offer



The Harmony XVS range of multi sound sirens, multi sound alarms, and editable alarms are commonly used audible signaling products for a wide range of applications. These audible units come with a combination of innovative features, high performance and simplicity.

- > Available in various sound levels to suit for different industrial applications (106dB, 105dB, 90dB, 96dB, 97dB, and 89dB at 1m/3.28 ft.)
- > Used for long distance indication of the operating status or sequences of a machine or installation



XVSV7●●●



XVSV9●●●



XVS72



XVS96



XVS14



XVS10

### Editable sound offer

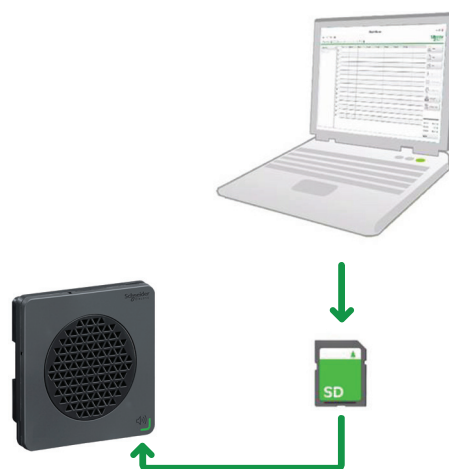
#### Customized voice message

- > A free of charge configuration software allows to customize the audible signals via SD card
- > Improved efficiency to set up by easily allowing to edit the voice message and change the modes on site
- > Adjustable volume up to 97dB (for DIN 96) or 89dB (for DIN 72)

Playlist Builder



Configuration of audible signal via Playlist Builder software



### + Compact audible units

Editable sound offer (continued)

Easy sound configuration

- > High level of alerting with customized voice message
- > Different types of audible sounds in single product makes it easy to use, simple to select and decreases the stock
- > Wide range of configuration with 6 input channels and up to 63 output tones



Easy sound kit selection and volume adjustment with use of simple tool

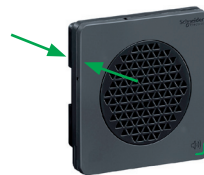


Compact and flexible

- > Easy installation with panel and wall mounting
- > Body thickness reduced to 24.9mm/0.98 in. (DIN 72) and 50.1mm/1.97 in. (DIN96)
- > With binary and bit input options, 8 work operation modes are available for various operations



Panel thickness reduced by 20% making the audible units compact



Robustness

- > IP 65 degree of protection (for panel mounting)
- > CE certified and RoHS compliant



Designed in conformity with requirements of the European RoHS Directive 2011/65/EU



➔ Industrial applications

Ideally suited for factory applications: AGV, packaging machine and non factory applications: packing, public transportation.



Factory applications



Packing



Public areas



Public transportation

+ Editable voice message

Harmony® type XV

Monolithic tower lights



|   |   |   |
|---|---|---|
| <b>Type of products</b>                             | Pre-assembled and pre-cabled USB tower lights   | Pre-assembled/pre-cabled tower lights<br>Variable composition tower lights for customer assembly of up to 4 units   |
| <b>Diameter</b>                                     | Ø 60 mm/2.362 in.   | Ø 60 mm/2.362 in.   |
| <b>Degree of protection conforming to IEC 60529</b> | IP 42   | IP 53 and IP 42 (base mounting)<br>IP 23 (direct aluminium tube mounting, aluminium tube mounting and "L" bracket)<br>IP 53 and IP 42 (aluminium tube mounting and fixing plate)<br>IP 40 (aluminium tube mounting and foldable bracket)  |
| <b>Type of signalling</b>                           | Steady<br>Flashing<br>"Flash"<br>Sound  | Yes<br>Yes<br>–<br>–  |
| <b>Light sources</b>                                | Incandescent bulb<br>LED bulb<br>Integral LED<br>"Flash" discharge tube<br>Halogen bulb   | With buzzer (volume control and alarm type can be set with HMI)<br>–<br>–<br>Yes<br>–<br>–  |
| <b>Colors of illuminated units</b>                  | Multi-color LEDs (many possible combinations can be set with HMI)<br><input type="checkbox"/> Red<br><input type="checkbox"/> Orange<br><input type="checkbox"/> Green<br><input type="checkbox"/> Blue | With buzzer<br><input type="checkbox"/> Red<br><input type="checkbox"/> Green<br><input type="checkbox"/> Amber<br><input type="checkbox"/> Blue  |
| <b>Connection</b>                                   | USB power cable:<br>– 300 mm/11.81 in. for tube mounting<br>– 400 mm/15.75 in. for direct mounting  | Flying leads, length 500 to 560 mm/19.68 to 22.05 in. for tube mounting according to model.<br>Length 900 mm/35.43 in. for base mounting.   |
| <b>Support panel drilling or cut-out</b>            | Mounting on support tube with fixing plate: 4 x Ø 6 mm/0.236 in.<br>Direct mounting on horizontal support: 3 x Ø 5 mm/0.197 in.   | Base mounting: 3 x Ø 5 mm/0.197 in.<br>Direct aluminium tube mounting: Ø20/0.787 in.<br>Aluminium tube mounting and "L" bracket: 2 x Ø9/0.354 in.<br>Aluminium tube mounting and fixing plate: 4 x Ø6/0.236 in.<br>Aluminium tube mounting and foldable bracket: 4 x Ø6/0.236 in. |
| <b>Type references</b>                              | XVGU  | XVG   |



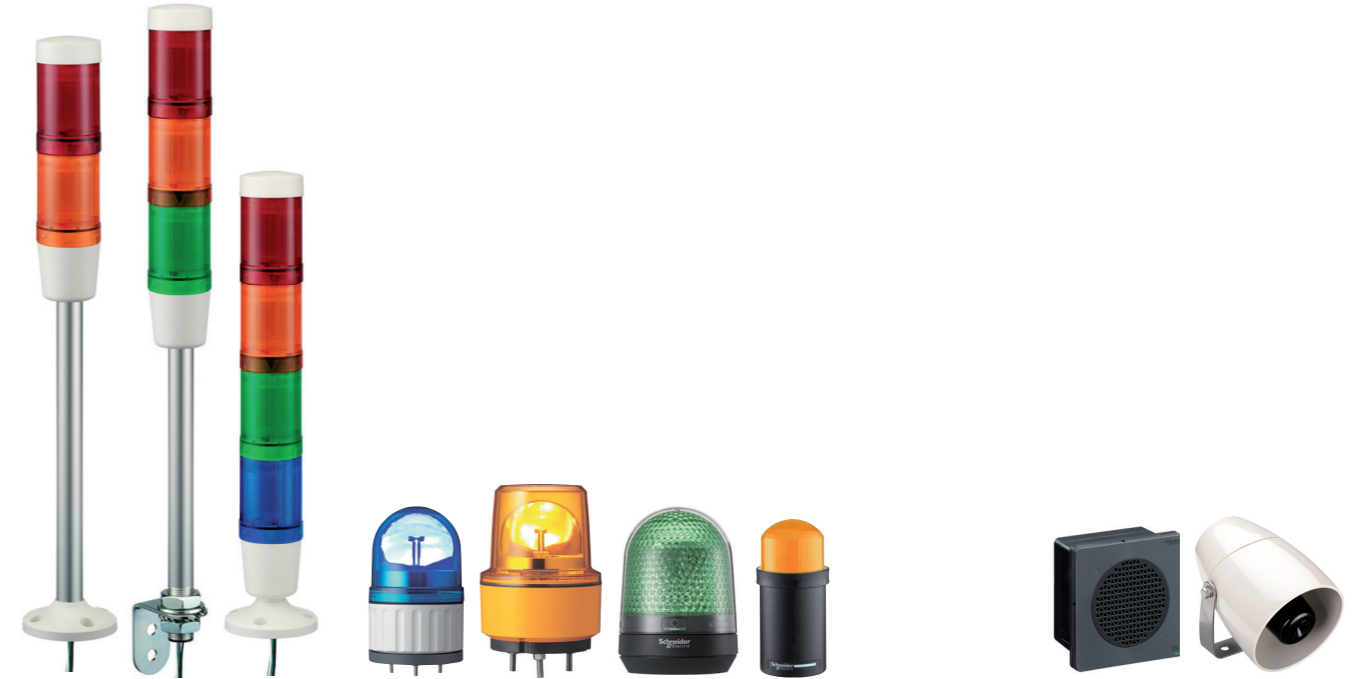
|   |  |   |  |
|---|--|---|--|
| <b>Type of products</b>                             | Pre-assembled and pre-cabled tower lights  | Pre-assembled and pre-cabled tower lights   | Pre-assembled and pre-cabled tower lights  |
| <b>Diameter</b>                                     | Ø 40 mm/1.575 in.  | Ø 60 mm/2.36 in.  | Ø 100 mm/3.937 in.   |
| <b>Degree of protection conforming to IEC 60529</b> | IP 54 (flat surface installation)<br>IP 23 (vertical surface installation)   | IP 54 (flat surface installation)<br>IP 23 (vertical surface installation)  | IP 54 (flat surface installation)  |
| <b>Type of signalling</b>                           | Yes<br>Yes<br>–<br>–   | Yes<br>Yes<br>–<br>–  | Yes<br>Yes<br>–<br>–   |
| <b>Light sources</b>                                | With buzzer<br>–<br>–<br>Yes<br>–<br>–   | With buzzer<br>–<br>–<br>Yes<br>–<br>–  | With siren or buzzer<br>–<br>–<br>Yes<br>–<br>–  |
| <b>Colors of illuminated units</b>                  | <input type="checkbox"/> Red<br><input type="checkbox"/> Orange<br><input type="checkbox"/> Green<br><input type="checkbox"/> Blue<br><input type="checkbox"/> Clear       | <input type="checkbox"/> Red<br><input type="checkbox"/> Orange<br><input type="checkbox"/> Green<br><input type="checkbox"/> Blue<br><input type="checkbox"/> Clear        | <input type="checkbox"/> Red<br><input type="checkbox"/> Orange<br><input type="checkbox"/> Green<br><input type="checkbox"/> Blue<br><input type="checkbox"/> Clear     |
| <b>Connection</b>                                   | Flying leads, length 450 mm/17.71 in. to 900 mm/35.43 in. according to model   | Flying leads, length 450 mm/17.71 in. to 850 mm/33.46 in. according to model  | Flying leads, length 500 mm/19.68 in.  |
| <b>Support panel drilling or cut-out</b>            | Mounting on support tube with bracket: 2 x Ø 9 mm/0.354 in.<br>Direct mounting on horizontal support: 3 x Ø 5 mm/0.20 in.<br>Other mounting possibilities with accessories | Mounting on support tube with bracket: 2 x Ø 11 mm/0.43 in.<br>Direct mounting on horizontal support: 3 x Ø 5 mm/0.197 in.<br>Other mounting possibilities with accessories | Direct mounting on horizontal support:<br>– 3 x Ø 6 mm/0.236 in. (without siren)<br>– 3 x Ø 7 mm/0.276 in. (with siren)<br>Other mounting possibilities with accessories |
| <b>Type references</b>                              | XVC4   | XVC6  | XVC1   |

Harmony® type XV **Modular tower lights**



|   |   |   |
|---|---|---|
| <b>Type of products</b>                             | Illuminated beacons<br>Variable composition tower lights for customer assembly of up to 5 units   | Tower lights for customer assembly of up to 5 units.  |
| <b>Diameter</b>                                     | Ø 70 mm/2.756 in.   | Ø 60 mm/2.362 in.   |
| <b>Degree of protection conforming to IEC 60529</b> | IP 65 (mounted on fixing base XVBZ0●)<br>IP 66 (mounted on base unit)   | IP 65 for illuminated units<br>IP 54 for audible units<br>IP 55 for flexible mounting module  |
| <b>Type of signalling</b>                           | Steady<br>Flashing<br>"Flash"<br>Sound  | Yes<br>Yes<br>Yes<br>Yes (buzzer or editable voice)   |
| <b>Light sources</b>                                | Incandescent bulb<br>LED bulb<br>Integral LED<br>"Flash" discharge tube<br>Halogen bulb   | Yes<br>"PROTECTED LED"<br>"PROTECTED LED"<br>Yes<br>-   |
| <b>Colors of illuminated units</b>                  | <input type="checkbox"/> Green<br><input type="checkbox"/> Red<br><input type="checkbox"/> Orange<br><input type="checkbox"/> Blue<br><input type="checkbox"/> Clear<br><input type="checkbox"/> Yellow | <input type="checkbox"/> Green<br><input type="checkbox"/> Red<br><input type="checkbox"/> Orange<br><input type="checkbox"/> Blue<br><input type="checkbox"/> White<br><input type="checkbox"/> Yellow             |
| <b>Connection</b>                                   | Screw clamp terminals   | Spring cage connection terminals  |
| <b>Support panel drilling or cut-out</b>            | Mounting on support tube:<br>4 x Ø 5.5 mm/0.217 in. or M5<br>Vertical mounting: 3 x Ø 5 mm/0.197 in. or M5<br>Direct mounting: 2 x Ø 4.5 mm/0.177 in. or M4   | Mounting on support tube and adjustable support tube: 4 x Ø 6 mm/0.236 in.<br>Flexible wall mounting: 3 x Ø 5 mm/0.197 in.<br>Direct mounting: 2 x Ø 5 mm/0.197 in.<br>3 x Ø 5 mm/0.197 in.<br>4 x Ø 5 mm/0.197 in. |
| <b>Type references</b>                              | XVBL, XVBC  | XVU   |

**Rotating beacons** **Sound solutions**



|   |   |   |   |   |
|---|---|---|---|---|
| <b>Type of products</b>                             | Pre-assembled/pre-cabled tower lights<br>Variable composition tower lights for customer assembly of up to 5 units   | Pre-cabled rotating beacons<br>Pre-cabled motor-less rotating/flashing beacons  | Complete miniature beacons  | Sirens and electronic alarms  |
| <b>Diameter</b>                                     | Ø 45 mm/1.772 in.   | Ø 84 mm/3.31 in. to Ø 130 mm/5.12 in.   | Ø 45 mm/1.772 in.   | -   |
| <b>Degree of protection conforming to IEC 60529</b> | IP 54 in vertical position (XVM with plastic fixing plate)<br>IP 42 in horizontal position (XVM with metal bracket)<br>IP 40 in other positions (all types of XVM tower lights) | Ø 84 mm/3.31 in. and Ø 106 mm/4.17 in.: IP 23 (IP 65 with accessory)<br>Ø 120 mm/4.72 in.: IP 23<br>Ø 130 mm/5.12 in.: IP 66 and IP 67 (depending on voltage)<br>Ø 100 mm/3.94 in.: IP 65 for upright position, IP 23 for sideways and inverted position  | IP 40   | IP 53 (sirens)<br>IP 54 (electronic alarms)<br>IP 65 (editable voice)       |
| <b>Type of signalling</b>                           | Yes<br>Yes<br>Yes<br>Yes  | Yes<br>-<br>-<br>Yes  | Yes<br>-<br>Yes<br>-  | -<br>-<br>-<br>Yes (editable voice)   |
| <b>Light sources</b>                                | Yes<br>Yes<br>-<br>Yes  | -<br>"Super Bright"<br>-<br>-   | Yes<br>-<br>-<br>Yes  | -<br>-<br>-<br>-  |
| <b>Colors of illuminated units</b>                  | <input type="checkbox"/> Red<br><input type="checkbox"/> Green<br><input type="checkbox"/> Orange<br><input type="checkbox"/> Blue<br><input type="checkbox"/> Clear            | <input type="checkbox"/> Red<br><input type="checkbox"/> Orange<br><input type="checkbox"/> Green<br><input type="checkbox"/> Blue  | <input type="checkbox"/> Green<br><input type="checkbox"/> Red<br><input type="checkbox"/> Orange<br><input type="checkbox"/> Blue<br><input type="checkbox"/> Clear<br><input type="checkbox"/> Yellow | -   |
| <b>Connection</b>                                   | Flying leads, length 300 mm/11.81 in. or screw terminals  | Flying leads, length 400 mm/15.75 in. (except XVR08: 500 mm/19.68 in.)  | Screw clamp terminals   | Screw clamp terminals (except XVS14: flying leads, length 500 mm/19.68 in.) |
| <b>Support panel drilling or cut-out</b>            | Mounting on bracket: 2 x Ø 9 mm /0.354 in.<br>Mounting on support tube:<br>4 x Ø 5.5 mm/0.217 in. or M5   | Depending on model:<br>- XVR08 (Ø 84 mm/3.31 in.):<br>3 x Ø 5 mm/0.197 in.<br>- XVR10 (Ø 106 mm/4.17 in.):<br>3 x Ø 5 mm/0.197 in.<br>- XVR12 (Ø 120 mm/4.72 in.):<br>3 x Ø 6 mm/0.236 in.<br>- XVR13 (Ø 130 mm/5.12 in.):<br>3 x Ø 9 mm/0.354 in.<br>- XVR13●●●L (Ø 130 mm/5.12 in.):<br>3 x Ø 7 mm/0.276 in.<br>- XVR3 (Ø 100 mm/3.94 in.):<br>3 x Ø 6 mm/0.236 in. | 3 x Ø 3.3 mm /0.130 in. or M3   | 3 x Ø 6.5 mm/0.256 in.  |
| <b>Type references</b>                              | XVM   | XVR   | XVDLS   | XVS   |

# Signaling Units

## Sound units

### Harmony type XVS

#### Multi sound sirens and alarms



XVSV7



XVSV9



XVS10



XVS14



XVS72



XVS96

### Presentation

The multi sound sirens and alarms in the Harmony XVS range are audible signaling units used for long distance indication of the operating status or sequences of a machine or installation.

### XVSV editable voice alarms

The XVSV editable voice alarms are compact audible signaling units. Availability in dark Grey and White color makes them ideal for use in public areas and for factory applications. These units have wide range of configuration which allows selection of 6 voice channels, playing 63 messages with playback time of 256 sec (64 kb/s), to be mounted on wall or panels (protection: up to IP 65).

### XVS10, XVS14, XVS72, XVS96 multi sound sirens and alarms

This range involves several types of ready to use products mainly used on conveyor belts, automated industrial trucks and on the doors of electrical control panels:

- sirens with 2 tones, with very compact size, type XVS10,
- multisound sirens (43 tones), pre-cabled, 8 channels, type XVS14,
- electronic alarms, white or black color, 16 tones, 4 channels, type XVS72 and XVS96, to be mounted on panels (protection: IP 54).

The sound, with continuous or intermittent tone:

- guarantees a sound level of 106 dB at 1 m for XVS10,
- can be adjusted from 0 to 105 dB at 1 m for XVS14,
- can be adjusted from 0 to 90 dB at 1 m for XVS72,
- can be adjusted from 0 to 96 dB at 1 m for XVS96.

### Environment

The XVS sirens and electronic alarms offer following characteristics:

- Degrees of protection:
  - IP 65 for editable voice alarms type XVSV
  - IP 53 for multi sound sirens type XVS10 and XVS14
  - IP 54 for multi sound alarms type XVS72 and XVS96
- These products meet the requirements of the following standards:
  - EN/IEC 61000-6-2 and EN/IEC 61000-6-3 for voltages 120 V and 230 V A.C. (XVS14BMW and XVS72),
  - EN/IEC 60947-1 and EN/IEC 60947-5-1 for voltages 12 V and 24 V A.C. (XVS10, XVS14GMW, XVS14MMW and XVS96).
- Product certifications:
  - XVS10, XVS14, XVS72, and XVS96 are CE, UL and CSA certified
  - XVSV editable voice alarms type are CE certified

### Connection

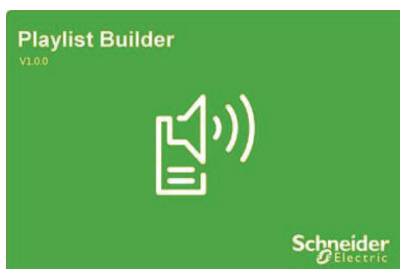
Products are to be connected:

- through cable-glands for using 6.5 mm/0.26 in. to 8.5 mm/0.33 in. cables (XVS10)
- through power wire c.s.a.: 0.52 mm<sup>2</sup>/AWG 20 and signal wire c.s.a.: 0.33 mm<sup>2</sup>/AWG 22, with flying leads, length 500 mm/19.6 in. (XVS14),
- through screw clamp terminals (XVS72 and XVS96).

For more technical information, please refer to our website [www.schneider-electric.com](http://www.schneider-electric.com).

### Software configuration

- The "Playlist Builder" software is used to configure the audible signals of XVSV voice units,
- This software can be downloaded from [www.schneider-electric.com](http://www.schneider-electric.com) for free of charge,
- It is compatible with Windows XP and Windows 7 (recommended) operating system,
- It allows configuration of audible signals to be set on 6 voice channels allowing to play 63 messages.



Playlist Builder configuration software window



## Signaling Units

Sound units

Harmony type XVS

Multi sound sirens and alarms

PF-141827A



XVS7BWN

PF-141528A



XVS9BBN

PF-141530A



XVSZ016

PF540816



XVS10M

PF56825



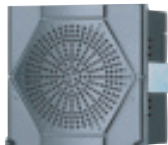
XVS14MW

PF56826



XVS72BM

PF56827



XVS96BM

### XVSV editable voice alarms

| Description                                | Voltage<br>V | Color      | Reference  | Weight<br>kg/lb |
|--|--------------|------------|------------|-----------------|
| Editable alarms, DIN72                     | ≡ 12-24      | NPN, Black | XVSV7BBN   | 0.142/0.313     |
|  |              | NPN, White | XVSV7BWN   | 0.142/0.313     |
|  |              | PNP, Black | XVSV7BBP   | 0.142/0.313     |
| Editable alarms, DIN96                     | ≡ 12-24      | NPN, Black | XVSV9BBN   | 0.268/0.591     |
|  |              | NPN, White | XVSV9BWN   | 0.268/0.591     |
|  |              | PNP, Black | XVSV9BBP   | 0.268/0.591     |
|  | ~ 100-230    | NPN, Black | XVSV9MBN   | 0.267/0.589     |
|  |              | NPN, White | XVSV9MWN   | 0.267/0.589     |
|  |              |            |            |                 |
| Wall mounting plate for<br>DIN72 and DIN96 |              |            | XVZ016 (1) | 0.148/0.326     |
| Gasket for DIN72                           |              |            | XVZ084 (2) | 0.002/0.004     |
| Gasket for DIN96                           |              |            | XVZ085 (2) | 0.002/0.004     |
| Bracket(with 2 screws) for<br>DIN72        |              |            | XVZ090 (2) | 0.015/0.033     |
| Bracket(with 2 screws) for<br>DIN96        |              |            | XVZ091 (2) | 0.027/0.060     |

### XVS10, XVS14, XVS72, XVS96 sirens and electronic alarms

| Description  | Voltage<br>V | Color      | Reference   | Weight<br>kg/lb |             |
|--|--------------|------------|-------------|-----------------|-------------|
| Sirens<br>106 dB, 2 tones  | ≈ 12-24      | White      | XVS10BMW    | 0.800/1.764     |             |
|  |              | White      | XVS10GMW    | 1.000/2.205     |             |
|  |              | White      | XVS10MMW    | 1.000/2.205     |             |
| Multisound sirens<br>0 to 105 dB, 43 tones<br>8 channels<br>Pre-wired        | ≡ 12/24      | White      | XVS14BMW    | 1.000/2.205     |             |
|  |              | White      | XVS14GMW    | 1.200/2.646     |             |
|  |              | White      | XVS14MMW    | 1.200/2.646     |             |
| Multisound alarms<br>0 to 90 dB, 16 tones<br>Panel Mount DIN72<br>4 channels | ≡ 12/24      | PNP, Black | XVS72BMBP   | 0.180/0.397     |             |
|  |              | PNP, White | XVS72BMWP   | 0.180/0.397     |             |
|  | ≈ 12/24      | NPN, Black | XVS72BMBN   | 0.180/0.397     |             |
|  |              | NPN, White | XVS72BMWN   | 0.180/0.397     |             |
|  |              | ≡ 12/24    | PNP, Black  | XVS96BMBP       | 0.400/0.882 |
|  |              |            | PNP, White  | XVS96BMWP       | 0.400/0.882 |
| ≈ 12/24  | NPN, Black   | XVS96BMBN  | 0.400/0.882 |                 |             |
|  | NPN, White   | XVS96BMWN  | 0.400/0.882 |                 |             |

(1) Optional

(2) Accessory included

---

| X         |   |
|-----------|---|
| XVSV7BBN  | 9 |
| XVSV7BWN  | 9 |
| XVSV7BBP  | 9 |
| XVSV9BBN  | 9 |
| XVSV9BWN  | 9 |
| XVSV9BBP  | 9 |
| XVSV9MBN  | 9 |
| XVSV9MWN  | 9 |
| XVSZ016   | 9 |
| XVSZ084   | 9 |
| XVSZ085   | 9 |
| XVSZ090   | 9 |
| XVSZ091   | 9 |
| XVS10BMW  | 9 |
| XVS10GMW  | 9 |
| XVS10MMW  | 9 |
| XVS14BMW  | 9 |
| XVS14GMW  | 9 |
| XVS14MMW  | 9 |
| XVS72BMBP | 9 |
| XVS72BMWP | 9 |
| XVS72BMBN | 9 |
| XVS72BMWN | 9 |
| XVS96BMBP | 9 |
| XVS96BMWP | 9 |
| XVS96BMBN | 9 |
| XVS96BMWN | 9 |

**Schneider Electric Industries SAS**

Head Office  
35, rue Joseph Monier  
F-92500 Rueil-Malmaison  
France

[www.schneider-electric.com](http://www.schneider-electric.com)

The information provided in this documentation contains general descriptions and/or technical characteristics of the performance of the products contained herein. This documentation is not intended as a substitute for and is not to be used for determining suitability or reliability of these products for specific user applications. It is the duty of any such user or integrator to perform the appropriate and complete risk analysis, evaluation and testing of the products with respect to the relevant specific application or use thereof. Neither Schneider Electric nor any of its affiliates or subsidiaries shall be responsible or liable for misuse of the information contained herein.

Design: Schneider Electric  
Photos: Schneider Electric

DIA5ED2130804EN