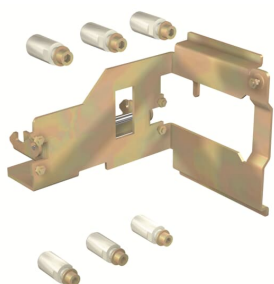


PRODUCT-DETAILS

# KIT MP T7-T7M-X1 W 4p

# KIT MP T7-T7M-X1 W 4p



## General Information

Extended Product Type	KIT MP T7-T7M-X1 W 4p
Product ID	1SDA062163R1
EAN	8015644647025
Catalog Description	KIT MP T7-T7M-X1 W 4p
Long Description	KIT CONVERSION FOR MOVING PART WITHDRAWABLE FOUR-POLE T7-T7M-X1

## Circular Value

Conflict Minerals Reporting Template (CMRT)	9AKK108467A5658
Toxic Substances Control Act - TSCA	9AKK108467A8326

## Environmental

Environmental Information	9AKK108467A6707
REACH Declaration	9AKK108466A1425
RoHS Information	9AKK108466A1424
RoHS Status	Following EU Directive 2011/65/EU and Amendment 2015/863 July 22, 2019

## Ordering

Order Code US and Canada	KT7WMK-4
EAN	8015644647025
Minimum Order Quantity	1 piece
Customs Tariff Number	85389099

## Dimensions

Product Net Weight	0.9 kg
--------------------	--------

## Container Information

Package Level 1 Units	1 piece
Package Level 1 Width	145 mm
Package Level 1 Height	230 mm
Package Level 1 Depth / Length	300 mm
Package Level 1 Gross Weight	0.9 kg
Package Level 1 EAN	8015644647025

## Additional Information

Configuration Type	Loose or configurable
Number of Poles	4
Product Main Type	Accessories for Tmax T
Product Name	Accessory
Product Type	Accessory
Standards	IEC
Suitable For	T7, X1
Suitable for Product Class	SACE Tmax T SACE Emax

## Certificates and Declarations

Data Sheet, Technical Information	1SDC210015D0208 1SDC210300D0201
Declaration of Conformity - CE	Refer to the EU Declaration of the relative Circuit Breaker
Instructions and Manuals	1SDH000529R0801

## Classifications

ETIM 7	EC002049 - Modification set for power circuit breaker
ETIM 8	EC002049 - Modification set for power circuit breaker
ETIM 9	EC002049 - Modification set for power circuit breaker
Object Classification Code	Q
UNSPSC	39120000
WEEE Category	5. Small Equipment (No External Dimension More Than 50 cm)
eClass	V11.1 : 27370402

---

## Categories

---

Low Voltage Products and Systems → Circuit Breakers → Moulded Case Circuit Breakers → Accessories for Tmax T

