

Introduction:

This guide describes suggestions for expanding a USB Host Interface of XBT GT series. Prior to using the XBT GT's USB Front Cable (hereafter referred to as the "cable"), please make sure you read this manual entirely.

Package Contents

This unit has been carefully packed, with special attention to quality. However, if for any reason, you find any of the contents of this package damaged or missing, please contact your local Schneider Electric representative immediately.

- Installation Guide (This manual)
- A USB Front Cable (length: 1m [39.37in.])
- A waterproof cap
- A nut
- A packing

DANGER

RISK OF ELECTRIC SHOCK

Prior to connecting the cable, check that the XBT GT's power supply is completely turned OFF to prevent an electric shock.

- Do not modify the cable since doing so can result in a fire.

Failure to follow this instruction will result in death, serious injury, or equipment damage.

WARNING

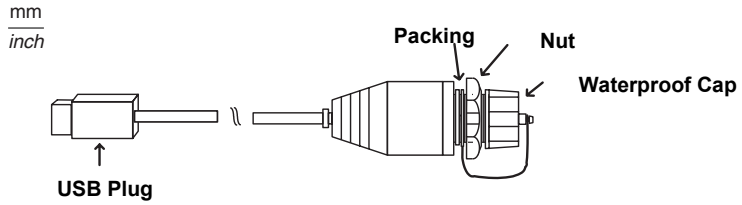
UNINTENDED EQUIPMENT OPERATION

- This cable is not appropriate for use with aircraft control devices, aerospace equipment, central trunk data transmission (communication) devices, nuclear power control devices, or medical life support equipment due to their inherent requirements for extremely high levels of safety and reliability.
- When using this cable with transportation vehicles (trains, cars and ships), disaster and crime prevention devices, various types of safety equipment, non-life support related medical devices, etc. redundant and/or fail-safe system designs should be used to ensure the proper degree of reliability and safety.

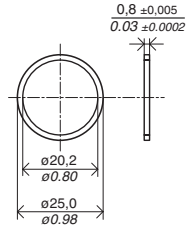
Failure to follow this instruction can result in death, serious injury, or equipment damage.

Note: Disposal of this unit should be done so according to your country's regulations for similar types of industrial waste.

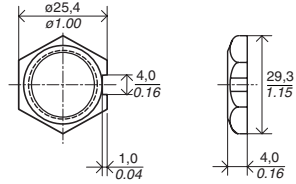
Dimensions



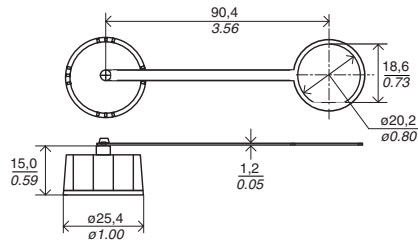
Packing



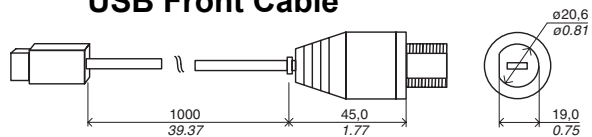
Nut



Waterproof Cap



USB Front Cable



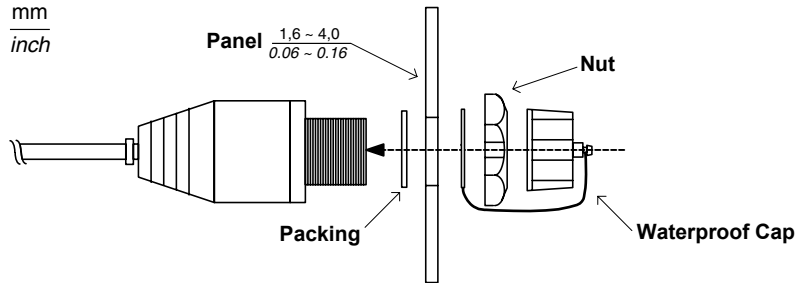
Installation

The USB plug side of a cable is attached in XBT GT series.

1- Attach the packing, the cap (the packing part), the nut, and the cap (the main part) carefully to the cable, as shown below after checking that they are not bent or twisted.

Once the cap is attached to the cable, IP65f will be applied to the front side (the right panel's side of the figure below).

2- Tighten the cap and the nut with the torque: 0.1N•m (0.02lb-in.).



Panel Cut Dimensions

⚠ WARNING

INADEQUATE SEAL HAZARD

- Use cut-out pattern shown on left side below.
- Use of a round hole or any other hole geometry can result in inadequate protection against water ingress. Failure to follow this instruction can result in personal injury or equipment damage.

Failure to follow this instruction can result in death, serious injury, or equipment damage.

