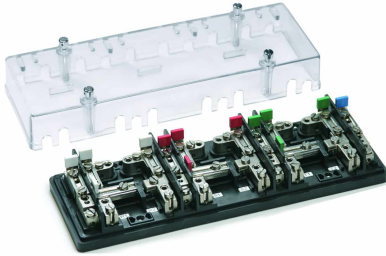
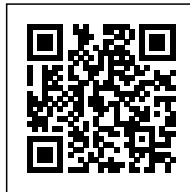
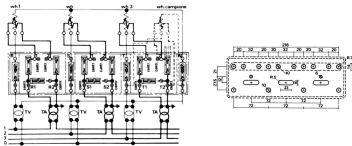


3-phase
control terminal board, yellow color, side-entry connection



Series	MCT/SA
Code	MC403G
Type	MCT.3/SA/G
HS code	85369010
Colour	Yellow
TECHNICAL FEATURES	
Function/Type	Sectioning and measurement
Rated cross-section	6 mm ²
Rated cross-section	
Connecting capacity	
Flexible wire	0.5-6 mm ²
Rigid wire	0.5-6 mm ²
Electrical characteristics according to IEC EN standard	
Maximum voltage AC/DC	500 V
Maximum current (rated cross-section)	57 A
Protection degree	IP20
Rated impulse withstand voltage / pollution degree	6 kV / 3
Insulation stripping length	-
Tightening torque value (nom. / max.)	1.2 Nm
Dimension	85x245x48 mm (AxBxH)
Plastic material	Kelon UL94V-0
ACCESSORIES	
Protection cover	-
APPROVALS AND MARKINGS	



* For meters with three-phase and neutral insertion* Side cable entry with 8 mm wide slot* Transparent front cover

DESCRIZIONE DEL PRODOTTO

MCT.3/SA/G 3-phase control terminal board, yellow color, side-entry connection