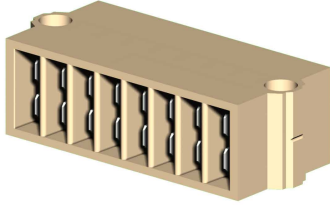
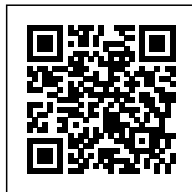


## Terminal board with flat connection



<b>Series</b>	CF
<b>Code</b>	CF400
<b>Type</b>	CF.8/2+2
<b>HS code</b>	85369010
<b>Colour</b>	Beige
<b>TECHNICAL FEATURES</b>	
<b>Function/Type</b>	Feed-through
<b>Rated cross-section</b>	2.5 mm <sup>2</sup>
<b>Rated cross-section</b>	
<b>Connecting capacity</b>	
<b>Flexible wire</b>	< 2.5 mm <sup>2</sup>
<b>Rigid wire</b>	-
<b>Wire with ferrule - ferrule type</b>	-
<b>Electrical characteristics according to IEC EN standard</b>	
<b>Maximum voltage AC/DC</b>	500 V
<b>Maximum current (rated cross-section)</b>	20 A
<b>Caliber</b>	-
<b>Electrical characteristics according to UL Standard</b>	
<b>Maximum voltage AC/DC</b>	-
<b>Maximum current (rated cross-section)</b>	-
<b>Section (min-max)</b>	-
<b>Tightening torque value (UL)</b>	-
<b>Electrical characteristics according to ATEX directive and IEC Ex standard</b>	
<b>Maximum voltage AC/DC</b>	-
<b>Maximum current (rated cross-section)</b>	-
<b>Operating temperature Min/Max</b>	-
<b>Rated impulse withstand voltage / pollution degree</b>	6 kV / 3
<b>Insulation stripping length</b>	-
<b>Tightening torque value (nom. / max.)</b>	-
<b>Dimension</b>	34x80x24 mm (AxBxH)
<b>Insulation material temperature index (EN 60216-1)</b>	130 °C
<b>Plastic material</b>	Polyamide UL94V-0
<b>ACCESSORIES</b>	
<b>End section</b>	-
<b>Insulated bushing</b>	CF/BI (cod. CF102), CF/BR (cod. CF201) (1)
<b>APPROVALS AND MARKINGS</b>	



\* With 6.3 x 0.8 mm flat push-on tab connections (2 for each pole)\* Singular or overlapped mounting  
1 (1) Per maggiori dettagli, consultare le nostre esplicative

## DESCRIZIONE DEL PRODOTTO

CF.08/2+2  
Terminal board with flat connection