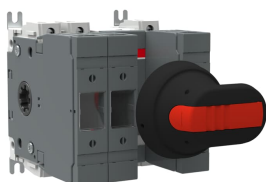


PRODUCT-DETAILS

OS63GD21P

OS63GD21P SWITCH FUSE



General Information

Extended Product Type	OS63GD21P
Product ID	1SCA122841R1001
EAN	6417019537436
Catalog Description	OS63GD21P SWITCH FUSE
Long Description	Switch Fuses,Front Operated,3-pole,21 (Between the Poles),DIN,000,Handle and shaft included,

Circular Value

Conflict Minerals Reporting Template (CMRT)	9AKK108467A5658
REACH Declaration	1SCC011021D0201
RoHS Information	1SCC011020D0201

Ordering

Minimum Order Quantity	1 piece
Customs Tariff Number	85365080
Country of Origin	Finland (FI)

Popular Downloads

Data Sheet, Technical Information	1SCC311013C0201
Instructions and Manuals	1SCC311036M0212

Dimensions

Product Net Width	190 mm
Product Net Height	170 mm
Product Net Depth / Length	145 mm
Product Net Weight	1.18 kg 2.6 lb

Technical

Rated Operational Current AC-21A (I_e)	(500 V) 63 A (690 V) 63 A
Rated Operational Current AC-22A (I_e)	(500 V) 63 A (690 V) 63 A
Rated Operational Current AC-23A (I_e)	(500 V) 63 A (690 V) 63 A
Rated Operational Power AC-23A (P_e)	(220 ... 240 V) 18.5 kW (400 V) 30 kW (415 V) 30 kW (500 V) 37 kW (690 V) 55 kW
Conventional Free-air Thermal Current (I_{th})	$\Theta = 40\text{ °C}$ 63 A
Conventional Thermal Current (I_{the})	Fully Enclosed 63 A
Rated Impulse Withstand Voltage (U_{imp})	12 kV
Rated Insulation Voltage (U_i)	1000 V
Rated Operational Voltage	Main Circuit 690 V AC
Rated Short-time Withstand Current Low Voltage (I_{cw})	for 1 s 2.5 kiloampere rms
Rated Conditional Short-Circuit Current (I_{nc})	(690 V) 80 kA
Power Loss	at Rated Operating Conditions per Pole 7.5 W
Pollution Degree	3
Handle Type	Handle and shaft included
Switches Operating Mechanism	21 (Between the Poles)
Position of Line Terminals	Top In - Bottom Out Bottom In - Top Out
Fuse Size	NH000

Fuse System	DIN
Operating Mode	Front Operated
Standards	IEC 60947-3
Mounting Type	Base mounting
Number of Poles	3
Cable Cross-Section	2.5 ... 25 mm ²
Terminal Type	Screw Terminals
Tightening Torque	3 N·m 4 N·m
Rated Current (I _n)	Main Circuit 63 A

Technical UL/CSA

Tightening Torque	3 N·m 4 N·m
-------------------	----------------

Environmental

RoHS Status	Following EU Directive 2011/65/EU and Amendment 2015/863 July 22, 2019
-------------	--

Certificates and Declarations

CCC Certificate	CCC OS32-63G_2016.pdf
Declaration of Conformity - CE	1SCC311136D2703
DNV GL Certificate	1SCC311125D0203
EAC Certificate	EAC OT_OTDC_OTL_OTP_OTR_OTU_OTE_OETL_OESA_OESC_OTM_OS_OSM_ .pdf
REACH Declaration	1SCC011021D0201

Container Information

Package Level 1 Units	box 1 piece
Package Level 1 Width	170 mm 6.7 in
Package Level 1 Depth / Length	190 mm 7.5 in
Package Level 1 Height	145 mm 5.7 in
Package Level 1 Gross Weight	1.3 kg 2.9 lb
Package Level 1 EAN	6417019537436

Classifications

Object Classification Code	Q
ETIM 7	EC001040 - Fuse switch disconnecter

ETIM 8	EC001040 - Fuse switch disconnecter
ETIM 9	EC001040 - Fuse switch disconnecter
eClass	V11.1 : 27371401
WEEE Category	5. Small Equipment (No External Dimension More Than 50 cm)

Categories

Low Voltage Products and Systems → Switches → Switch Fuses

