



CorePro LEDtube EM/ Mains T8

CorePro LEDtube 1500mm 20W 840 T8

Philips CorePro LEDtubes are the quick and easy way to replace T8 fluorescent or other LED tubes with a fast pack back time. Not only does the Core range of LEDtubes require a low initial investment, but LED energy efficiency also delivers instant savings that you can bank on over a long and reliable lifetime. Plus, with the same lamp size and light distribution as fluorescent alternatives, you'll never know the difference. There are two ways to install these LED tubes: Rewire your existing fluorescent-based luminaires so the CorePro LEDtubes work directly on the Mains. Or simply change the fluorescent starter to an LED starter that can be used with your Electromagnetic ballasts.

Warnings and Safety

- NOTE: The overall energy efficiency and light distribution of any installation that uses these lamps will be determined by the design of the installation.
- Installation must be done according to the installation diagrams provided with the lamp or available online. Installation must be done by a certified professional.

Product data

General Information	
Cap-Base	G13 [Medium Bi-Pin Fluorescent]
CE mark	Yes
EU RoHS compliant	Yes
Nominal lifetime	50,000 hour(s)
Switching Cycle	200,000
Lighting Technology	LED
Flux measurement reference	Sphere

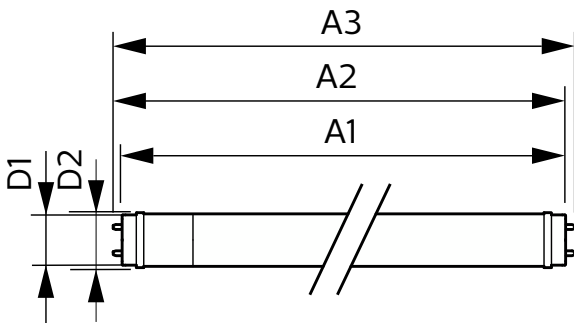
Light Technical	
Color Code	840 [CCT of 4000K]
Beam Angle (Nom)	240 degree(s)
Luminous Flux	2,200 lumen
Color Designation	Cool White (CW)
Correlated Color Temperature (Nom)	4000 K
Luminous Efficacy (rated) (Nom)	110 lm/W
Color Consistency	<6
Color rendering index (CRI)	80

CorePro LEDtube EM/Mains T8

LLMF At End Of Nominal Lifetime (Nom) 70 %	
Operating and Electrical	
Line Frequency	50 to 60 Hz
Input Frequency	50 to 60 Hz
Power Consumption	20 W
Lamp Current (Nom)	105 mA
Starting Time (Nom)	0.5 s
Warm-up time to 60% light	0.5 s
Power Factor (Fraction)	0.9
Voltage (Nom)	220-240 V
Temperature	
Ambient temperature range	-20 °C to 45 °C
T-Case Maximum (Nom)	60 °C
Controls and Dimming	
Dimmable	No
Mechanical and Housing	
Bulb Finish	Frosted
Bulb Material	Glass

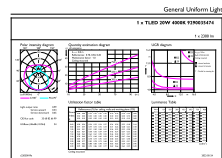
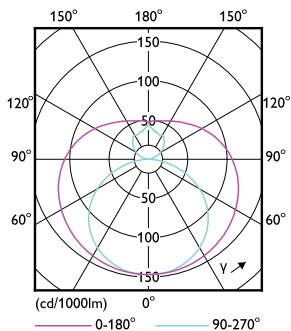
Product Length	1,500 mm
Bulb Shape	Tube, double-ended
Approval and Application	
Energy Saving Product	Yes
Approval Marks	RoHS compliance CE marking KEMA Keur certificate
Energy Consumption kWh/1000 h	20 kWh
EPREL Registration Number	1,384,726
Product Data	
Full product code	871951445981600
Order product name	CorePro LEDtube 1500mm 20W 840 T8
Order code	929003547402
Numerator - Quantity Per Pack	1
Numerator - Packs per outer box	20
Material number (12NC)	929003547402
Net weight	0.220 kg
Full product name	CorePro LEDtube 1500mm 20W 840 T8
EAN/UPC - Case	8719514459823

Dimensional drawing



Product	D1	D2	A1	A2	A3
CorePro LEDtube 1500mm 20W 840 T8	25.7 mm	28 mm	1,500 mm	1,507.1 mm	1,514.2 mm

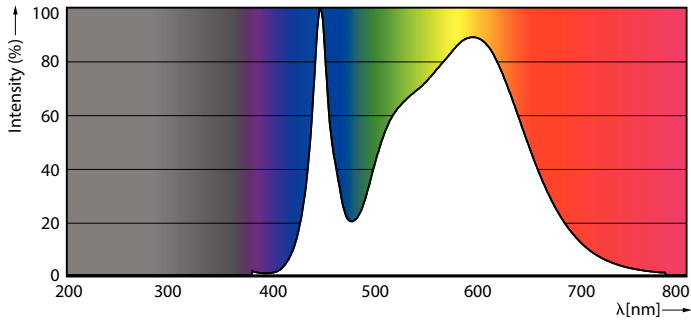
Photometric data



Light Distribution Diagram - CorePro LEDtube 1500mm 20W 840 T8

CorePro LEDtube EM/Mains T8

Photometric data

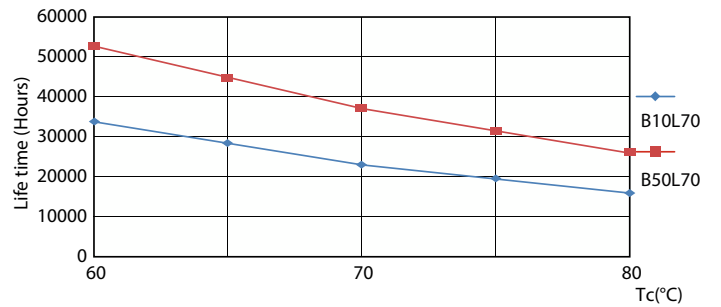


Spectral Power Distribution Colour - CorePro LEDtube 1500mm 20W 840 T8

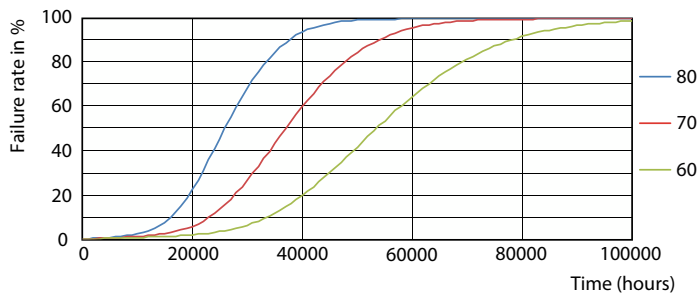
Lifetime



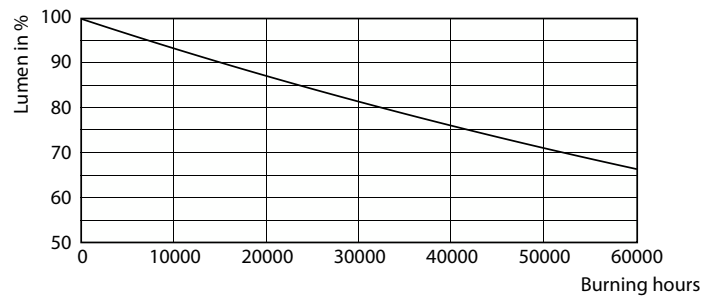
Life Expectancy Diagram - CorePro LEDtube 1500mm 20W 840 T8



Life Expectancy Diagram



Life Expectancy Diagram



Lumen Maintenance Diagram - CorePro LEDtube 1500mm 20W 840 T8

CorePro LEDtube EM/Mains T8

