



LexCom Home

Catalogue 08-2018
Evolutive connectivity



schneider-electric.com

Life Is On

Schneider
Electric

LexCom Home ticks all the boxes:



Easy



Time-saving



Tool-less



Reliable



Flexible



Safe

Contents

Customize your solution	8
Aesthetic and easy to use	9
LexCom Home – one solution for every need	10
Schneider Electric is a one-stop shop	12
Inspire your customers to think on home improvement.....	13
Essential	15
Performance	23
Premium	31
Reference number overview.....	42



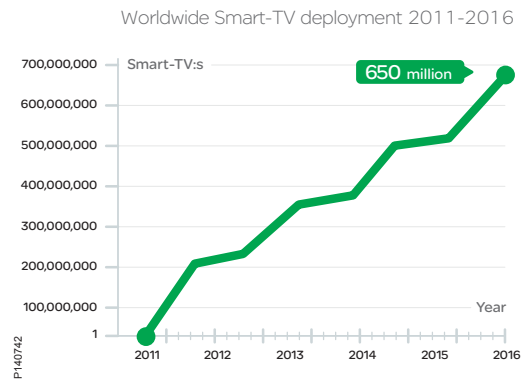
PI48069

Ever growing demand for high-performing networks

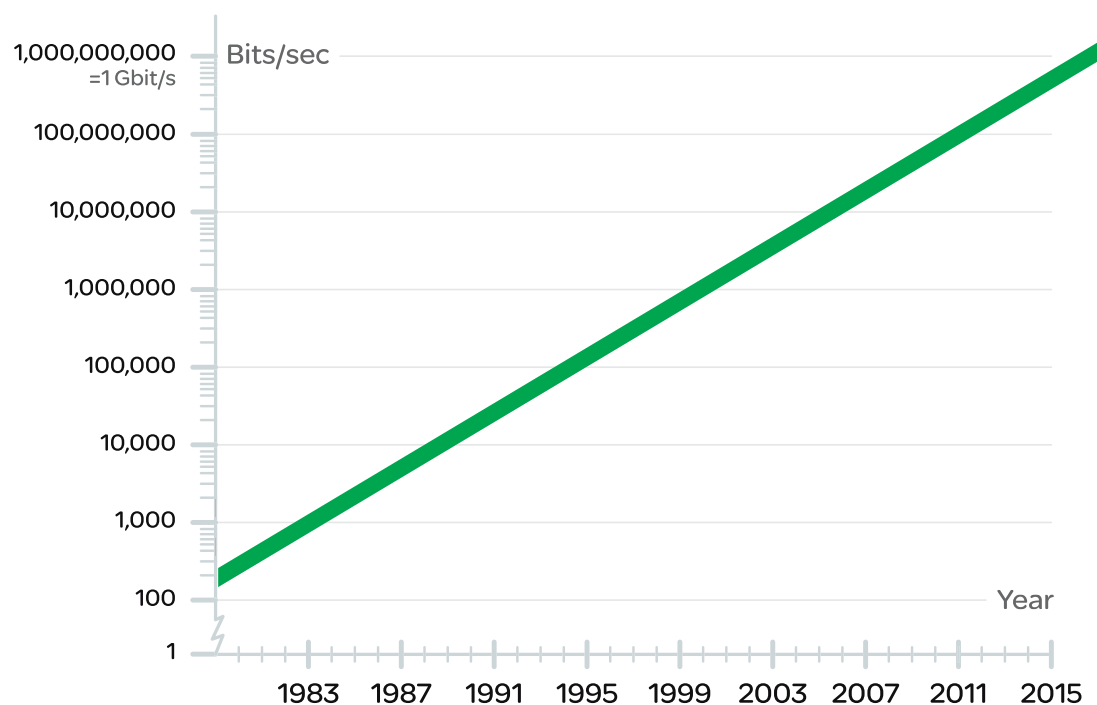
These days people expect a lot from their network solutions, and regard stable connectivity as a natural part of life. In new-built houses, high-capacity network connectivity has basically become as essential as power and water supply.

Making better business

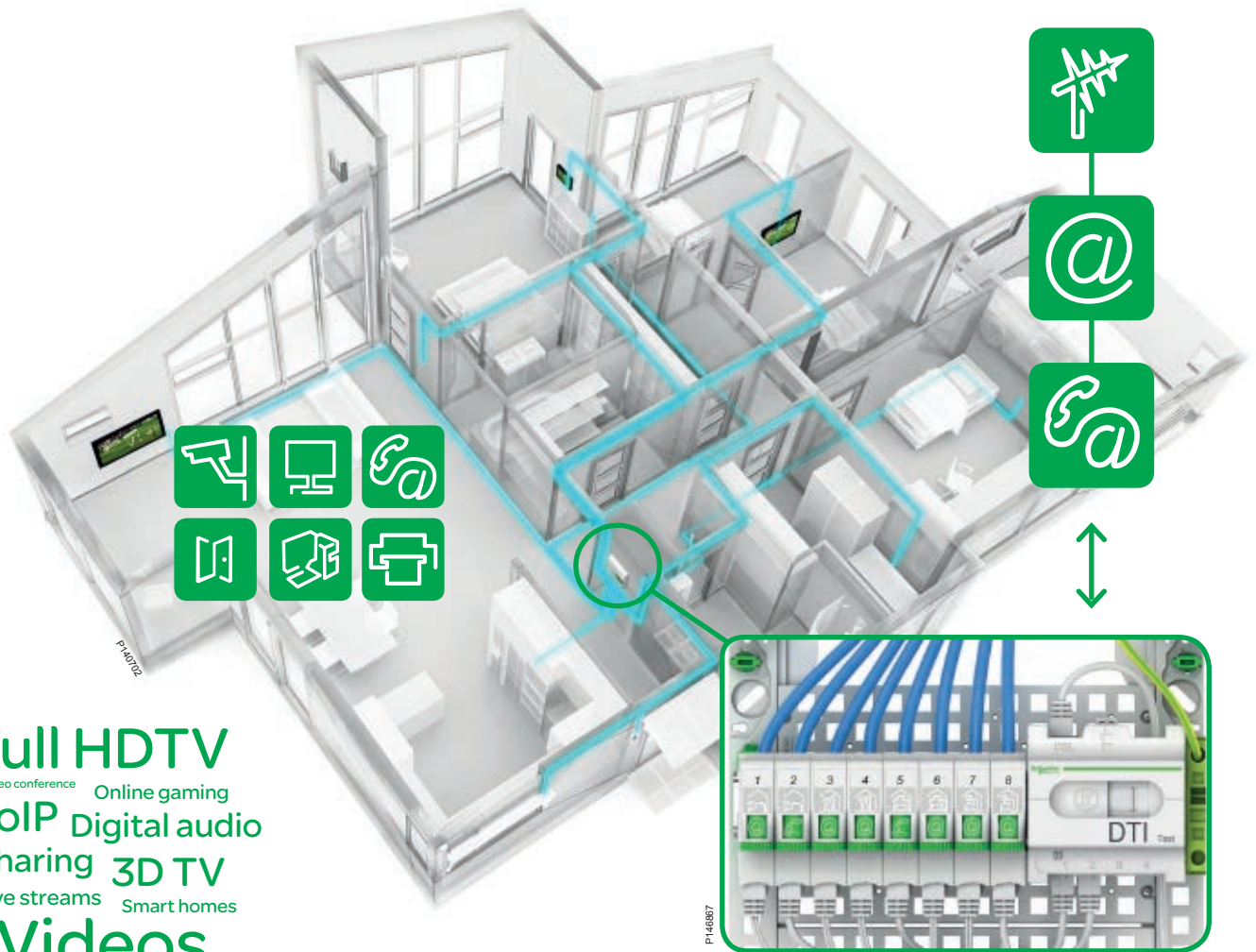
The supply of reliable network solutions is in a global race against the demand of increased connectivity. And while more bandwidth is provided by infrastructure operators, pressure on speed, safety and performance is hard. That is why we have developed and boosted our LexCom Home offer. We want to help you, as an installer, turn the ever growing demand for high-performing networks into greater business potential.



Average development of internet connectivity



Every day we stream, share, download and upload enormous amounts of data across the globe. The demand for sufficient bandwidth is growing by the minute.



Full HDTV
Video conference Online gaming
VoIP Digital audio
Sharing 3D TV
Live streams Smart homes
Videos

One architecture for all applications

To make sure that the speed and performance of the network will match current and future needs, the infrastructure should build on a wired solution. With such a strong foundation like LexCom Home, it's easy to add wireless technology for further individual comfort.

LexCom Home – ultimate performance

As trends point in one direction, we can be sure that the need of fast and reliable internet connection will definitely not abate. Full HDTV, online gaming, live streaming and digital audio solutions are just a few of the demanding services we use, and will use in the near future. That is why maximum network stability and reliability should build on a wired solution. A wired architecture provides fast and secure connectivity, ideal for applications like TVs, computers, security cameras and printers.

Add wireless for comfortable mobility

Wireless technology brings freedom, comfort and mobility to the users, enabling them to move around freely while using laptops, smartphones and tablets. But wireless networks cannot match wired architectures when it comes to safety and reliable performance. So let LexCom Home supply wired high-capacity solutions for the most demanding needs, and add wireless functionality on top.

Reap the benefits of great connectivity

LexCom Home is the supreme choice for creating a long-lasting, flexible home network solution. The components cover all functions to meet the high expectations on network features in a modern home. In addition to basic functions of our everyday connected lives, such as TV, phone and a reliable internet connection, there are a number of services that need to be accessible.

Better experience for multiple users

E-gaming, VOD and AVOD, HA services and data storage support along with applications like surveillance cameras, sensors and energy consumption monitors are all internet-based services that make the home network solution comfortable, safe and sustainable.

The architecture of LexCom Home encapsulates all of these functions in one, easily adjusted system – and multiple operations can run simultaneously with no decline of bandwidth speed or flexibility.



Television

Today's television is individualized. Time, place, channel and show – it is entirely up to you.

IP-Telephone

Flexibility and considerably lower costs for both international and local calls, are among the main benefits.

Computer

The wired network makes all the computers in the house communicate and perform at their best.

Printer/HDD

Print and share documents from any unit in the network.



Display energy consumption
Keep track of energy usage and pinpoint the spots where you can make savings.

IP Security camera
With a connected camera you can monitor what is going on around your house.

IP Video door entry phone
Identify each visitor and choose whom to let in the house. Or not.

Sensors
Increase safety by letting the network alert about temperature, leakage, etc.

Sound diffusion
Control and enhance the sound ambience in every room in the house.

Customize your solution



With LexCom Home you will get some pre-assembled starter packs and a family of components that allow you to create exactly the solution you would like to have.

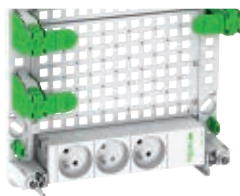
Smart accessories let you move around the components the way you like, creating a structure in perfect order and tailor-made for your customer's needs.



Easy to install thanks to its flexible structure and tool-less accessories

P146871

P140593



P146868



P141423



P140593



P140719



P140720

Tool-less fixing of the DIN rail. Just snap-in Fix DIN in the grid.

Flexible grid

Sturdy and perforated grid allows you to use the whole surface and optimize the space inside the enclosure.

Fix Screw

Tool-less mobility of all screw-fixed components thanks to the smart snap-in function.

Fix Box

For tool-less fixing of active components. Adjustable from 25 mm to 85 mm.

Fix Cable

All cables in perfect order with the tool-less cable holder. Always a professional and reliable installation.

Aesthetic and easy to use

Every detail is designed to provide maximum user-friendliness, and many operations are carried out with no tools – an apparent advantage for you as the installer as well as for the end-user. Even though the LexCom Home enclosure will not be mounted in the most visible area of the home, you will still appreciate the sleek look and feel of the design.

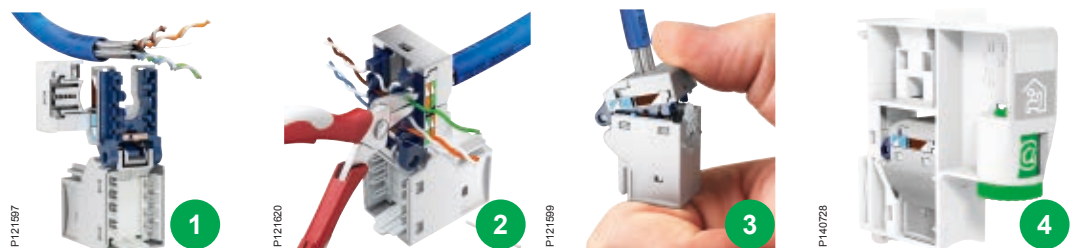


Choose applications in a simple way



Fix RJ45 is a device for individual support of the shielded S-One RJ45 connectors. The identification system is both simple and clear. Just turn the thumb wheel for the choice of application and use the pre-printed labels for the choice of rooms.

The fast and trouble-free S-One connector



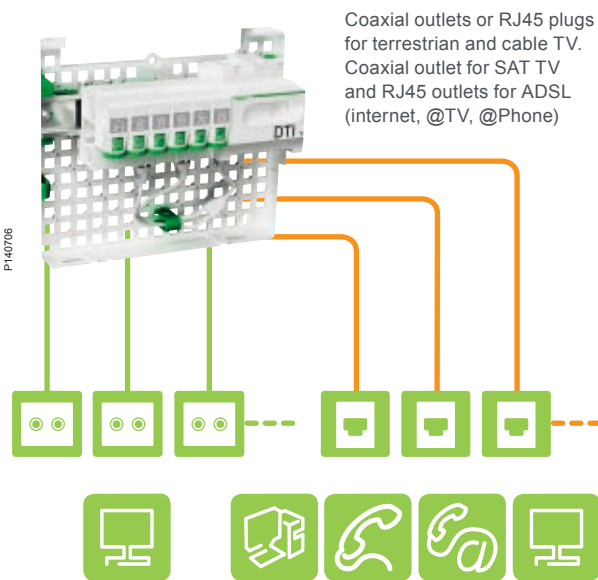
The compact, one-piece design connector is loaded with advantages. Colour-coding, smart bridle, U-shaped entry and 360° earthing allow you to connect up to 50% faster. And the only tool you need is a cutting plier.

LexCom Home

– one solution for every need

LexCom Home Essential

TV on coaxial plugs or on RJ45 plugs. Phone and data on RJ45 plugs. A simple and fast way to enable users a reliable and safe online connection.



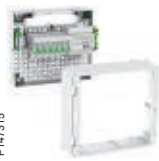
Manual patching – Offer available in packs

Eco Pack Grade 2



2 coaxial outputs
4 RJ45 connectors

Access Pack Grade 2



4 coaxial outputs
6 RJ45 connectors

THD Pack Grade 2



4 coaxial outputs
6 RJ45 connectors

Active Box



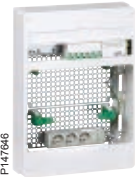
Can be used for operator box integration

Access Pack 18 modules



6 Supports for 6 RJ45 connection

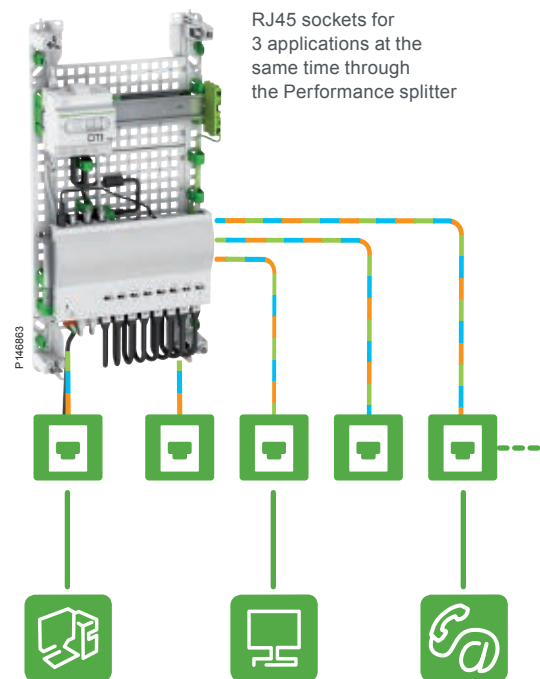
THD Pack 18 modules



Can be used for operator box integration

LexCom Home Performance

Phone, TV and data on RJ45 plugs. Features like the splitter, that makes all media available at the same time (triple play), and the automatic smart patching, bring peace of mind to the user.



Automatic patching – Offer available in packs or to mount

Performance Pack Grade 3



8 RJ45 Ports

Active Box



Can be used for Performance core unit integration

Performance Core Unit

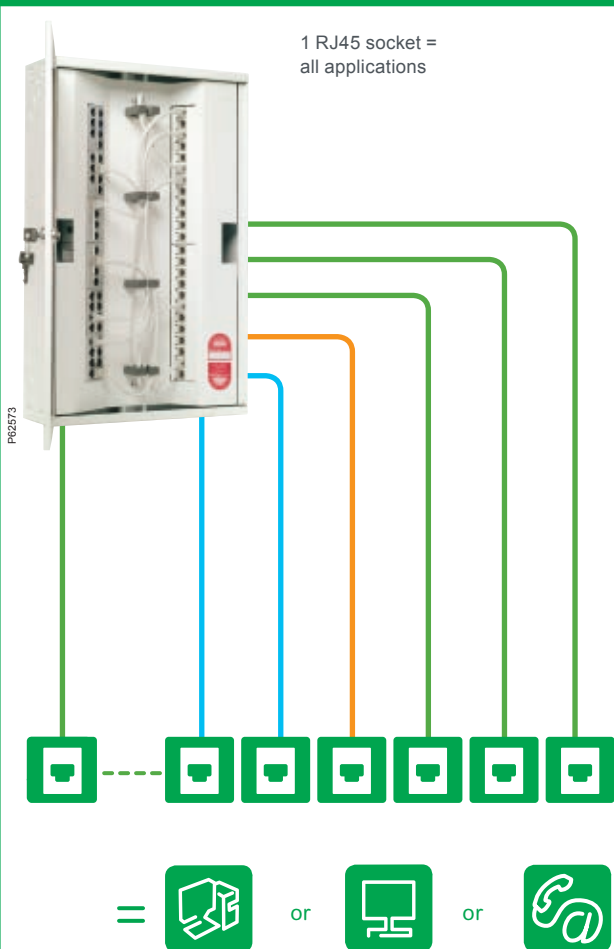


Smart processing device

The most obvious common denominators for all LexCom Home versions are the flexibility, the upgradability and the user-friendliness. And this applies to you as the installer, as well as the end-user. So whether your customer's needs suit the Essential, Performance or Premium version, you can be sure to install a solution that generates reliable connectivity, convenient adjustability and great entertainment.

LexCom Home Premium

A modular offer that provides any kind of media and multiple possibilities. All in a high gigabit performance for advanced high tech users.



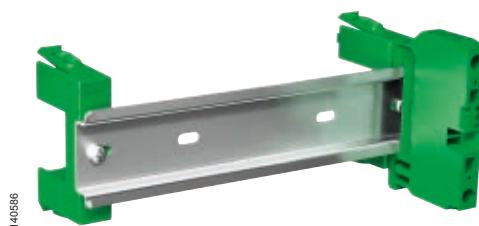
Common accessories for Essential, Performance and Premium



Enclosure dedicated to ADSL/VDSL/Fibre/Cable Box

Max box dimension:
330 x 245 x 85 mm

Tool-less accessories



Fix DIN



Fix Box



Fix RJ45



Fix Screw



Fix Cable

Schneider Electric is a one-stop shop

Schneider Electric offers integrated solutions across multiple market segments, for commercial as well as residential use. Regardless of scale, we focus on making energy safe, reliable, efficient, productive and green, to help all our customers make the most of their energy.



All that you need for a complete residential solution

We have decades of experience as a global energy specialist, with the main focus to make people's lives as comfortable as possible. And of course, that includes your worklife too. This is why you need one supplier only for your residential solutions. Today our offer spans from residential control systems and home networks

to installation material and uniquely designed switches and outlets. So there is much more for you and your customers to explore and enjoy. After all, it's in both our and your interest to help the customers to make the most of their energy.



Inspire your customers to think on home improvement



Help your customers to personalise their home

After having installed the home network, you can help your customers to personalise their home even more. Whether they seek to keep track of energy consumption, increase safety and security, enjoy true comfort or let the switch design reflect their personal taste, they will find what they need by browsing the vast Schneider Electric range.



Learn more at mixandmatch.schneider-electric.com. Also available on App Store and Android Market.

Home improvement from Schneider Electric

Wiser is a new and innovative home energy management solution. It is currently the only system able to manage both heating and electrical loads for the entire house and for each appliance. We also provide a wide range of sleek, tasteful designs of wiring devices that lets your customers create a truly personal look and feel. And to take customisation to its full potential, your customers can design their own switches and outlets of Odace design. The Mix & Match tool helps them create designs that really puts a personal stamp on the interior.

LexCom Home

Essential

Comparison chart

	Telephone	Data (Megabit)	TV	CATV	SAT TV
Essential	●	1000	●○	●○	○
Performance	●	100	●	●	○
Premium	●	1000	●○	●○	○

● RJ45. ○ Coax socket.

Essential – robust and simple



P148074

If you need to find a home network solution that is as easy to invest in as it is to install, the obvious choice is LexCom Home Essential. As the name says, it covers the basic network requirements while providing a compact, well-organized solution. Choose between four different, ready-packed versions.

The new tool-less Essential packs

Eco Pack Grade 2 TV

Simple, easy-to-use solution with basic features for getting the home network started. Fully equipped with all cords connected.

Benefits

- Simple to install
- Fully standard compliant
- Cost efficient



P147649

Access Pack Grade 2 TV 13 M

Compact design with smart features, such as grid for maximum mobility and accessibility, as well as clear port identification.

Benefits

- Ergonomic
- Compact, all in one
- Accessible



P147315

THD Pack Grade 2 TV 13 M

Spacious yet compact design. Superior features – pre-wired phone cords and electrical power block, tool-less mounting with Fix Box, Fix DIN and Fix Screw accessories easy and tool-less cable management with Fix Cable accessories.

Benefits

- Accessible organisation
- Easy wiring
- Upgradable



P147318

Active Box

For maximum flexibility and customised solutions. The flat grid allows easy mounting of bulky components, all fixed and arranged with tool-less Fix components.

Benefits

- Space for operator box
- Generous space for cable passage



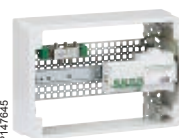
P148847

Access Pack Grade 2 TV 18 M

Spacious yet compact design. Superior features – tool-less mounting with Fix Box, Fix DIN and Fix Screw accessories, easy and tool-less cable management with Fix Cable accessories. No electrical power bloc.

Benefits

- Accessible organisation
- Upgradable



P147645

THD Pack Grade 2 TV 18 M

For maximum flexibility and customised solutions. The flat grid allows easy mounting of bulky components, all fixed and arranged with tool-less Fix components.

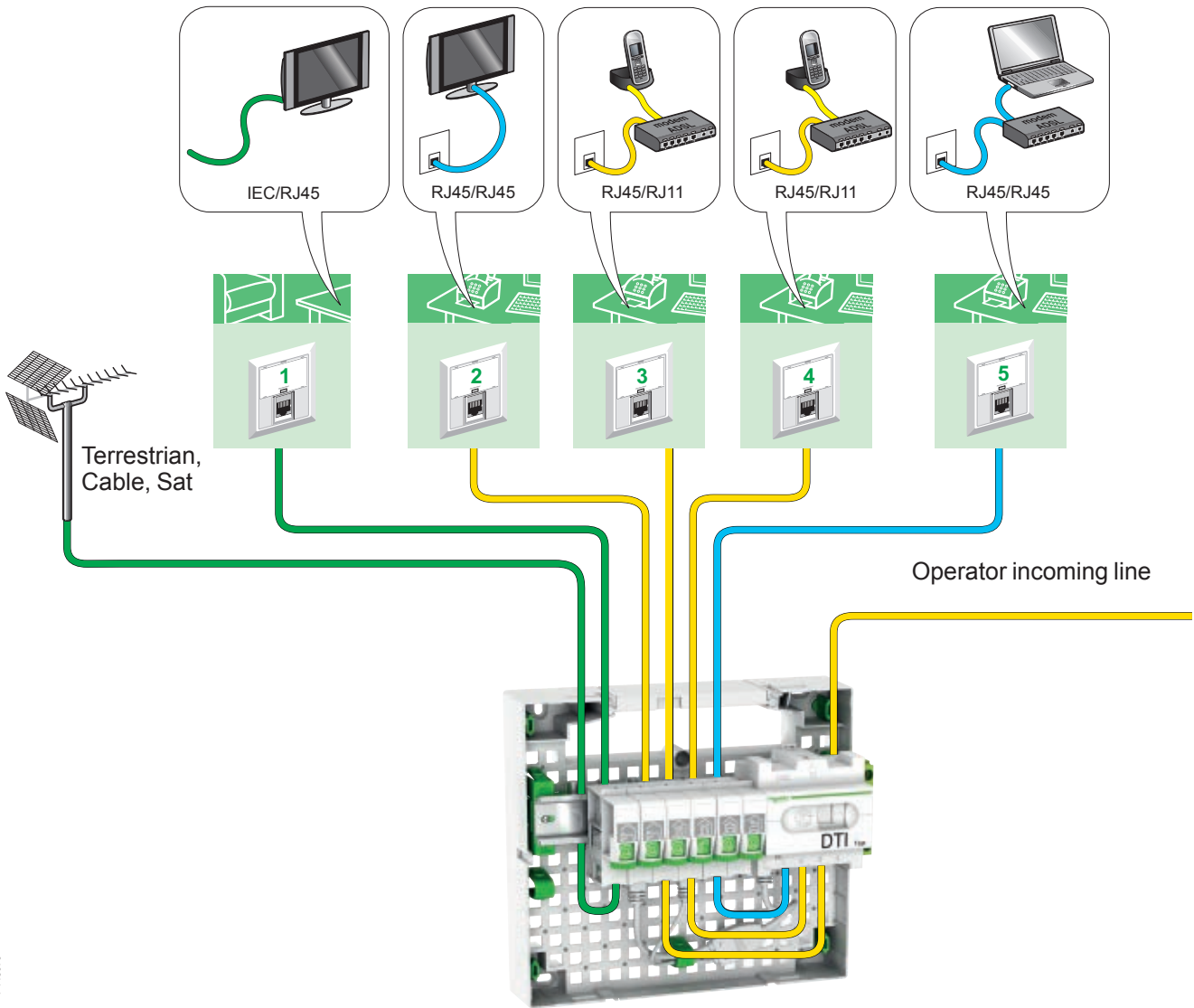
Benefits

- Space for operator box
- Generous space for cable passage



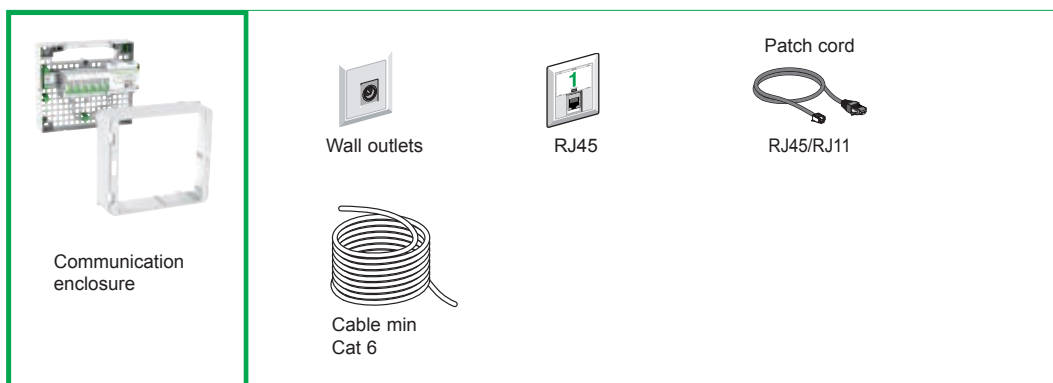
P147648

Applications and installation examples



P148076

LexCom Home Essential system components





P147649

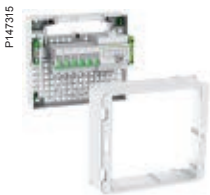
Starter packs

Eco Pack

Resi9 cabinet 13 modules, 1 row with plastic cover equipped with:

- 1 DTI 4 output
- 4 connectors RJ45 6 STP
- 1 patch cord RJ45/RJ45
- 1 balun cord 40 cm
- 1 patchpanel (4 ports). Extension of 4 additional ports in option
- 1 DIN rail
- 1 coaxial splitter 2 outputs
- 1 earth terminal block
- 4 fixing one-quarter screws to fix the cabinet on Resi9 trunk
- Fiber-ready: DIN rail for DTI integration (refs: VDIR326030/VDIR326040)
- Door in option

Type	Dimension	EAN code	Reference
Eco Pack Grade 2TV	250x252x112 mm	3606481338464	VDIR390006



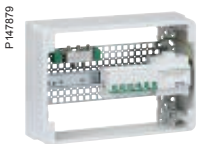
P147315

Access Pack

Resi9 cabinet 13 modules, 1 row with plastic cover equipped with:

- Grid structure for easy components integration
- 1 DTI 4 output
- 4 patch cords RJ45/RJ45
- 1 balun cord 40 cm
- 6 individual supports for RJ45 S-One connectors
- 6 RJ45 connectors Cat 6 STP
- 1 DIN rail easily dismountable without any tool
- 1 coaxial splitter 4 output
- 1 earth terminal block
- 4 fixing one quarter screws to fix the cabinet on Resi9 trunk
- DIN rail for DTI integration (ref: VDIR326040)
- Data distribution ready: room for 1 ethernet switch (ref: VDIR323005)
- Door in option

Type	Dimension	EAN code	Reference
Access Pack Grade 2TV	250x252x108 mm	3606481338471	VDIR390026



P147879

Resi9 cabinet 18 modules, 1 row with plastic cover equipped with:

- Grid structure for easy components integration
- 1 DTI RJ45
- 4 data cords RJ45/RJ45 25 cm
- 1 balun cord IEC/RJ45 40 cm
- 6 individual supports for RJ45
- 6 RJ45 S-One connectors Cat 6 STP
- 1 raised DIN rail 18 modules easily dismountable without any tool
- 1 coaxial splitter 4 outputs
- 1 earth terminal block
- 4 fixing one-quarter screws to fix the cabinet on Resi9 trunk
- Data distribution ready: room for 1 ethernet switch (ref: VDIR323005)
- Door in option

Type	Dimension	EAN code	Reference
Access Pack Grade 2 TV 18M	250x357x108 mm	3606481355386	VDIR390041

P147318



THD Pack

Resi9 cabinet 13 modules, 3 rows with plastic cover equipped with:

- Grid structure for easy components integration
- 1 DTI RJ45
- 1 phone splitter + s'DSL master filter 5 outputs (4 phone outputs, 1 ADSL output)
- 6 individual supports for RJ45 S-One connectors
- 6 RJ45 S-One connectors Cat 6 STP
- 4 RJ45 data flat cord 250 mm
- 1 RJ45 patch cord 40 mm
- 1 telephone connection cord 300 mm
- 1 raised DIN rail easily dismantable without any tool
- 1 coaxial splitter 4 outputs
- 2 fix box components fixing
- 2 fix cables for cable management
- 1 earth terminal block
- 4 fixing one quarter screws to fix the cabinet on Resi9 trunk
- 3 power socket 230 V for the active components power supply (to be connected to a circuit breaker)
- DIN rail for DTI integration (ref: VDIR326040)
- Data distribution ready: room for 1 ethernet switch (ref: VDIR323005) or ADSL/VDSL/Fibre/Cable box (dim max 275x235x50 mm) or ONT (copper/optical converter)
- Door in option

Type	Dimension	EAN code	Reference
THD Pack Grade 2TV	500x252x112 mm	3606481338488	VDIR390036

P147646



Resi9 cabinet 18 modules, 3 rows with plastic cover equipped with:

- Grid structure for easy components integration
- 1 DTI RJ45
- 1 phone splitter + s'DSL master filter 5 outputs (4 phone outputs, 1 ADSL output)
- 6 indiv supports for RJ45 S-ONE connectors + 6 RJ45 S-One connectors Cat 6 STP
- 4 data cord RJ45/RJ45 0.25 m
- 1 patch cord IEC/RJ45 0.4 m
- 1 phone cord RJ11/RJ45 for box connection 0.5 m
- 1 raised DIN rail easily dismantable without any tool
- 1 coaxial splitter 4 outputs
- 2 fix box for components fixing
- 2 fix cable for cable management
- 1 earth terminal block
- 4 fixing one-quarter screws to fix the cabinet on Resi9 trunk
- 3 power sockets 230 V for the active components power supply (to be connected to a circuit breaker)
- Room for ethernet switch (ref: VDIR323005) or ADSL/VDSL/Fibre/Cable box, or ONT (copper/optical converter)
- Door in option

Type	Dimension	EAN code	Reference
THD pack Grade 2TV 18M	500x357x108 mm	3606481355393	VDIR390042

P146847



Active Box

Resi9 enclosure 3 rows fully dedicated to the ADSL/VDSL/Fibre Box.

- Grid structure
- 3 fix box for the box fixing (max box dimensions: 330x245x85 mm)
- 3 power sockets 230 V for the active components power supply (to be connected to a circuit breaker)
- 4 fixing one quarter screws
- Door in option

Type	Dimension	EAN code	Reference
Active Box (ADSL Box dedicated)	500x252x108 mm	3606480944758	VDIR511004



Data

Ethernet switch

■ Allow a network among all the IT equipments linked to the RJ45 wall sockets and share the internet access.

The switch packs are equipped with:

- Support for the switch installation inside the communication enclosures (refs: VDIR390023/VDIR390033)
- Patch cords RJ45/RJ45 25 cm

Type	Dimension	EAN code	Reference
Ethernet switch 5 ports 1 Gb/s	121x75x26 mm	3606480627804	VDIR323005



Telephone

DTI with integrated phone splitter

Allow to connect incoming telecom operator signal, test it and split it.

Type	EAN code	Reference
DTI with integrated phone splitter, 4 telephone outputs	3606480456121	VDIR326010
DTI with integrated phone splitter, ADSL filter, 4 telephone outputs, 1 ADSL output	3606480456138	VDIR326020



TV-SAT distribution

TV-SAT splitter

Dispatch the antenna, satellite or cable signal

- 2 or 4 outputs
- F connectors type
- Insertion loss/862 MHz: 10 dB/2400 MHz: 13 dB
- Power pass: 24 V DC, 0.5 A max
- Impedance 75 Ohms
- Bandwidth: 5 MHz to 2.3 GHz for VHF, UHF and satellite bands

Type	EAN code	Reference
2 Ways TV-SAT splitter	3606480217432	VDIR327002
4 ways TV-SAT splitter	3606480185861	VDIR327004



Spare parts

Connectors

Type	EAN code	Reference
S-One unshielded RJ45 Cat 5e	3606480384400	VDIB17725U01
S-One shielded RJ45 Cat 6	3606480384417	VDIB17726B01
S-One shielded RJ45 Cat 6 _A	3606480384455	VDIB1772XB01
S-One DPM unshielded RJ45 Cat 5e	3606480384462	VDIB17715U01
S-One DPM shielded RJ45 Cat 6	3606480384493	VDIB17716B01



Accessory

DIN rail

Type	EAN code	Reference
DIN rail 101 mm	3596870267256	VDIR380007



The customer needs a tool to install the DIN rail on the grid.



Patch panel

Type	EAN code	Reference
Patch panel 4 ports + 4 RJ45 Cat 6 STP	3606480397486	VDIR512002
Patch panel 4 ports empty	3606480551956	VDIR312011

Patch cord

Type	Length	EAN code	Reference
Telephone patch cord RJ45, Cat 5e unshielded 1P	0.3 m	3606480342349	VDIR346101
Telephone double patch cord RJ45	0.3 m	3606480578519	VDIR347102

Telephone patch cord RJ45/RJ11:

- Cat 5e UTP RJ45 (pair 4.5)/RJ11 (pair 3.4)

Type	Length	EAN code	Reference
Telephone distribution cord	1 m	3606480627835	VDIR342202
Telephone distribution cord	2 m	3606480186684	VDIR642102
Telephone distribution cord	5 m	3606480186691	VDIR642103

ADSL Signal distribution

Distri-link kit

Allow the transmission of the ADSL modem signals (LAN, Internet, IPTV) in the house. The kit includes:

- 1 double patchcord to be connected inside the communication cabinet (35 cm) with:
 - RJ45 plug, 4 pairs, shielded (to be connected to the RJ45 of each room)
 - RJ45 plug, 1 pair (4-5), unshielded (connected to ADSL port of the DTI)
 - RJ45 plug, 2 pairs (1-2, 3-6), shielded (connected to the switch)
- 1 double patchcord to be connected between the box ADSL and the wall outlet (3 m) with:
 - RJ45 plug, 4 pairs, shielded (connected to the wall outlet)
 - RJ45 plug, 2 pairs (1-2, 3-6), shielded (connected to the data port of the ADSL box)
 - RJ11 plug, 1 pair (4-5), unshielded (connected to the ADSL port of the ADSL box)

Type	EAN code	Reference
Distri-link kit ADSL/ADSL2+ & Gigabit Ethernet	3606480696374	VDIR390100

Power socket

Allows the power supply of all the active components installed inside the telecom cabinet (Box ADSL, switch, ONT, etc).

- 3 plugs 230 V - 16 A
- 2 m cable - Class 2
- Conductor cross section: 1.5 mm²

Type	EAN code	Reference
3 main power socket block 45° oriented	3606480627828	VDIR315002

Allows the power supply of all the active components installed inside the telecom cabinet (Box ADSL, switch, ONT, etc).

- 3 plugs 230 V CA - 10 A
- 2 m cable - Class 2
- Conductor cross section: 1 mm²

Type	EAN code	Reference
3 main power socket block K type	3606480627828	VDIR315003

Cables

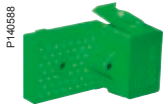
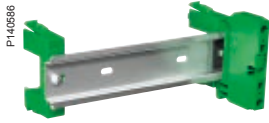
4 pair cable with general unshielded halogen free external sheath.

- 100 Ohms, 155 MHz

Type	Length	EAN code	Reference
Cat 5e U/UTP	305 m	3606480169496	VDICD115118
Cat 5e U/UTP	500 m	3606480169502	VDICD115218

- 100 Ohms, 250 MHz

Type	Length	EAN code	Reference
Cat 6 U/UTP	305 m	3606480292941	VDICD116118
Cat 6 F/UTP	500 m	3606480169557	VDICD136218
Cat 6 SF/UTP	500 m	3606480322167	VDICD176218



Fix Family tool-less accessories

DIN accessory

Allow tool-less fixing of the DIN rail.

- Assembly of 1 DIN rail mounted on 2 fix DIN (237 mm) + earth terminal block

Type	Length	EAN code	Reference
Fix DIN	237 mm	3606480627842	VDIR380001

Box accessory

Allow the tool-less fixing of the active components (Box ADSL, switch, ONT, etc).

- 2 fix box compatible with component thickness from 25 mm to 85 mm

Type	EAN code	Reference
Fix Box	3606480627859	VDIR380002

Screw accessory

Allow the tool-less fixing of the components using screws (splitters).

- 2 fix screw

Type	EAN code	Reference
Fix Screw	3606480627866	VDIR380003

Cable accessory

Allow the cable/patchcord management inside the telecom cabinet.

- 5 fix cable

Type	EAN code	Reference
Fix Cable	3606480627873	VDIR380004

RJ45 accessory

Allow the support of the RJ45 S-One connectors equipped with:

- A thumb wheel for the choice of application
- 6 pictos sheet for the choice of rooms
- Blank labels for free identification
- Earthing automatic clip for maximal security

Type	EAN code	Reference
Fix RJ45	3606480627880	VDIR380005
Fix RJ45 DPM	3606480627880	VDIR380006

FTTH

- Optical fibre reception point coming from the internet access supplier
- To clip on DIN rail/to fix by screw

Type	EAN code	Reference
DTIo 4 SC/APC	3606480578540	VDIR326040
DTIo 2 SC/APC	3606480578533	VDIR326030

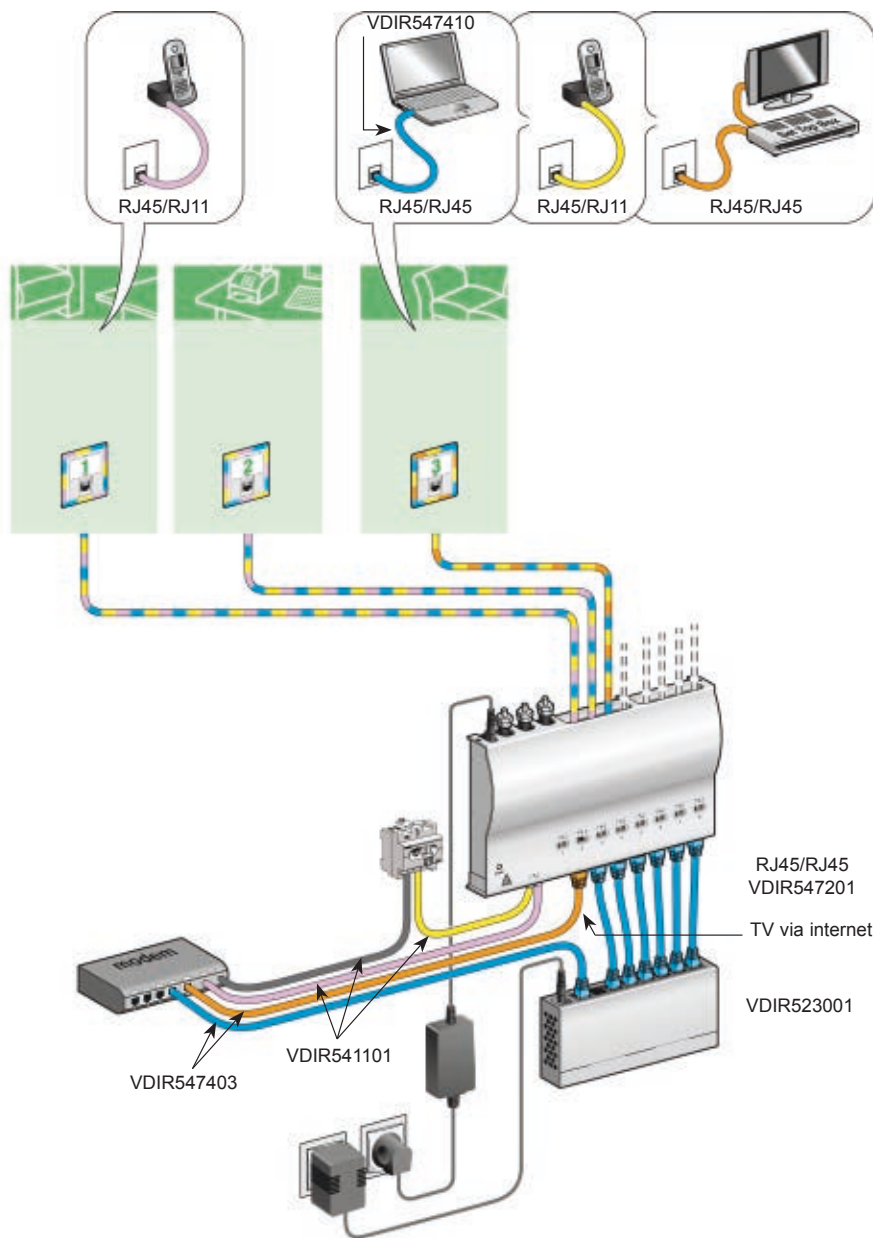
Performance

Comparison chart

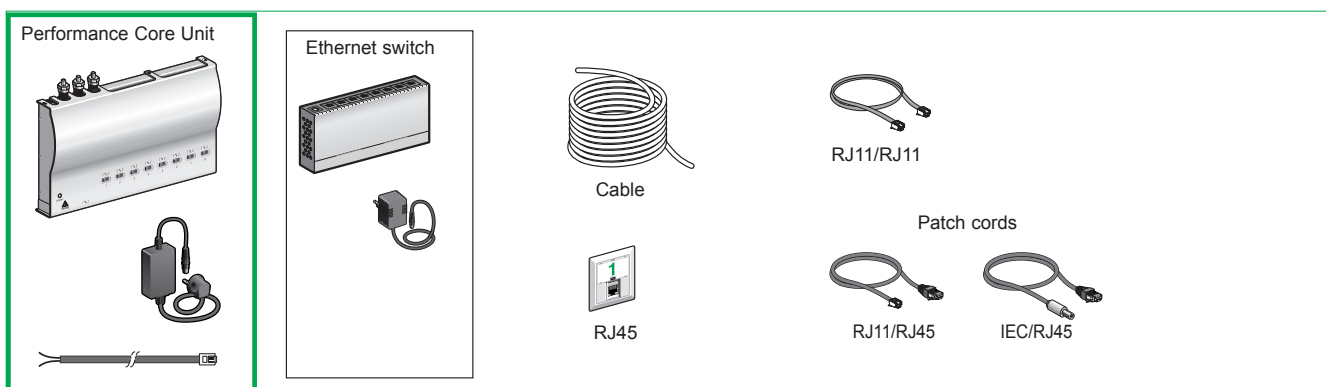
	Telephone	Data (Megabit)	TV	CATV	SAT TV
Essential	●	1000	●○	●○	○
Performance	●	100	●	●	○
Premium	●	1000	●○	●○	○

● RJ45. ○ Coax socket.

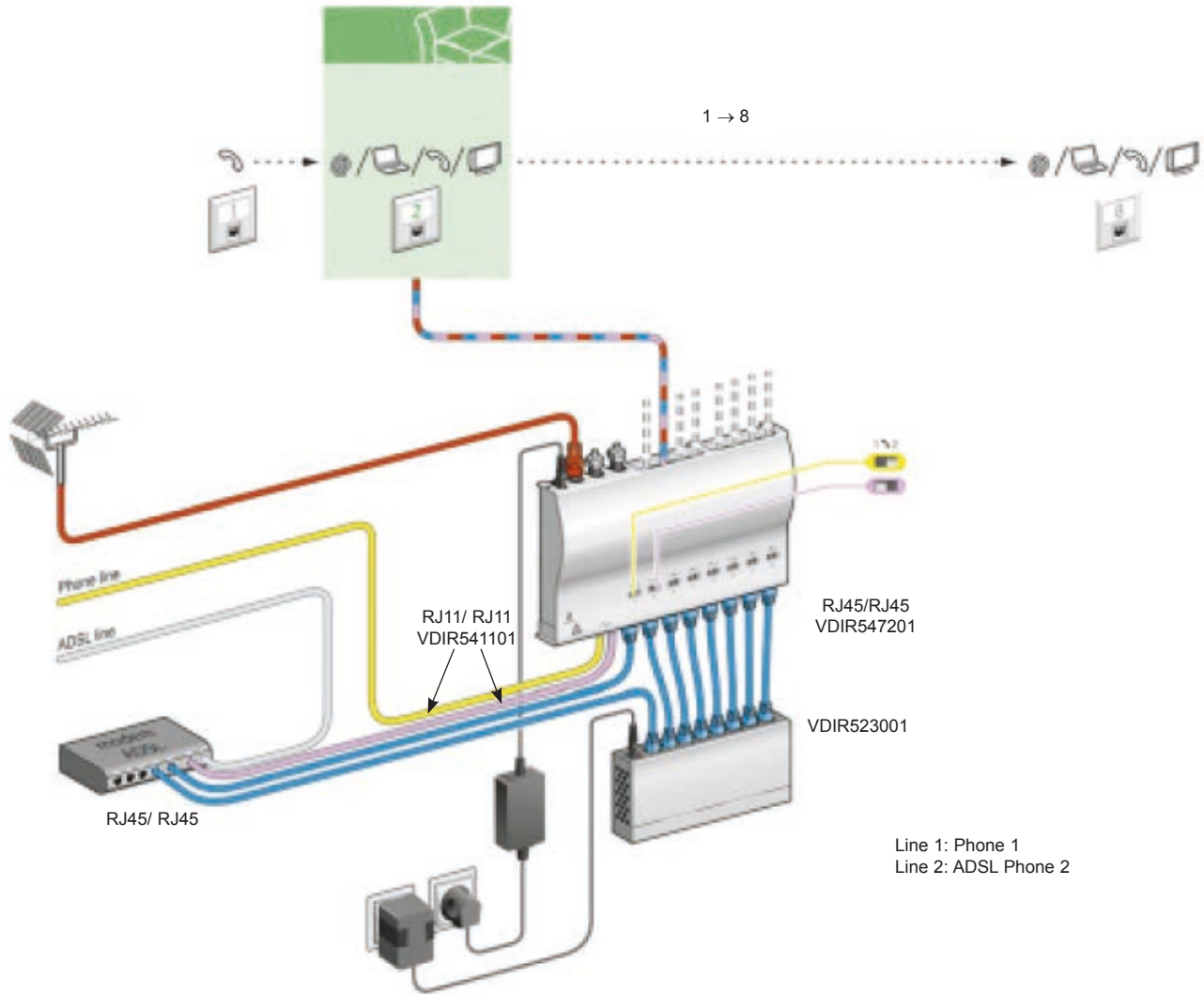
Applications and installation examples











LexCom Home Performance system components

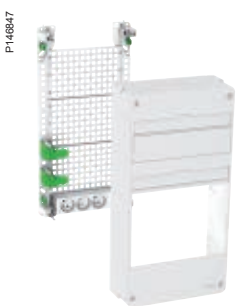


Applications and installation examples



P147647

<p>Performance Core Unit</p>  	<p>Ethernet switch</p>  	<p>Cable</p>  <p>RJ45</p> 	<p>RJ11/RJ11</p>  <p>Patch cord</p> <p>RJ11/RJ45</p> 
--	--	--	---



Starter packs

Performance Pack

Resi9 cabinet 13 modules, 3 rows with plastic cover and accessibility to the active components, equipped with:

- Grid structure for easy components integration
- 1 performance Core Unit Europe
- 1 DTI RJ45
- 1 phone splitter + s'DSL master filter 5 outputs (4 phone outputs, 1 ADSL output)
- 8 single patchcords RJ45/RJ45 0.15 m
- 1 single patchcord RJ11/RJ45 for box connection 0.5 m
- 1 telephone patchcord RJ11/RJ45 2 m
- 1 TV cord RJ45/coaxial 2 m
- 1 single patchcord RJ45/RJ45 2 m
- 1 raised DIN rail easily dismantlable without any tool
- 1 coaxial splitter 4 outputs
- 1 raised metallic support for switch and Performance Core Unit, dismantlable without any tool (fixed on 2 fix DIN)
- 7 fix cables for cable management
- 4 fixing one quarter screws to fix the cabinet on Resi9 trunk
- 3 power socket 230 V for the active components power supply (to be connected to a circuit breaker)
- 1 ethernet switch 8 ports 100 Mbit
- DIN rail with DTI (ref: VDIR326040)
- Door in option

Type	Dimension	EAN code	Reference
Performance Pack Grade 3	500x252x108 mm	3606481338495	VDIR590003

Active Box

Resi9 enclosure 3 rows.

- Grid structure
- 3 fix box for the box fixing (max box dimensions: 330x245x85 mm)
- 3 power sockets 230 V for the active components power supply (to be connected to a circuit breaker)
- 4 fixing one-quarter screws to fix the cabinet on Resi9 trunk
- Door in option

Type	Dimension	EAN code	Reference
Active Box (ADSL Box dedicated)	500x252x108 mm	3606480944758	VDIR511004

Triple play distribution

Performance Core Unit

Heart of the system: dispatch the antenna, phone and Internet information to the rooms.

- Connectivity:
 - 2 RJ11 ports (for 2 phone lines)
 - 1 RJ45 security (to plug a central alarm)
 - 8 ports RJ45 (to plug the external switch VDIR523001)
 - 8 IDC broches (to connect a cable linked to the communication sockets)
- TV amplification: -5/+15 dB

Accessories supplied:

- 1 power supply 12 V
- 2 patch cords
- wall fixing/rail fixing

Type	Dimension	EAN code	Reference
Performance Core Unit - Europe	145x225x39 mm	3606480185922	VDIR528000
Performance Core Unit - UK	145x225x39 mm	3606480185939	VDIR528010

Data

Ethernet switch

Put in network all the IT equipments linked to the wall sockets and share the Internet access.

- Interface: 8 ports RJ45
- Speed: 10/100 Mbps

Type	Dimension	EAN code	Reference
Ethernet switch 8 ports	139x66x22 mm	3606480185892	VDIR523001

P119911



P130560



P85676



P81305, P119786



P119730



P118427



P119792



Telephone

ADSL master filter

Type	EAN code	Reference
ADSL master filter (1 line input, 1 ADSL output, 1 telephone output)		VDIR526001

DTI with integrated phone splitter

Allow to connect incoming telecom operator signal, test it and split it.

Type	EAN code	Reference
DTI with integrated phone splitter, 4 telephone outputs	3606480456121	VDIR326010
DTI with integrated phone splitter, ADSL filter, 4 telephone outputs, 1 ADSL output	3606480456138	VDIR326020

Cables

Make the link between the enclosure modules and the wall outlets.

- Internal structure: 4 twisted pair cable - S/FTP - Cat 6 - pairs 7/8 have been tested up to 900 MHz to let TV signal pass
- Impedance: 100 Ω
- TIA color coding
- Norms: comply to EN50083
- External: white RAL9010

Type	Length	EAN code	Reference
Performance cable S-FTP, white	120 m	3606480150975	VDIR534810

Connectors

Category 6, 6A connectors

Type	EAN code	Reference
S-One shielded RJ45 Cat 6	3606480384417	VDIB17726B01
S-One shielded RJ45 Cat 6A	3606480384455	VDIB1772XB01

Data patch cord

Connect the switch to the Performance Core Unit (need 8). 2 pair patch cord.

- Connectivity: RJ45/RJ45
- Sheath material: grey LSZH
- Specification: shielded - 100 Ω

Type	Length	EAN code	Reference
Ethernet cord FTP 2P Cat 5e	0.15 m	3606480185991	VDIR547201

Connection cords

Connect your IT equipments to the wall outlet - specific equipment for performance offer.

- Connectivity: RJ45 - RJ45
- Internal: shielded - Cat 5, 1/2 - 3/6 pairs connected
- External: grey - LSZH
- Impedance: 100 Ω

Type	Length	EAN code	Reference
Connection cord data STP RJ45 2P	0.5 m	3606480186004	VDIR547402
Connection cord data STP RJ45 2P	1 m	3606480186011	VDIR547403
Connection cord data STP RJ45 2P	2 m	3606480186028	VDIR547404
Connection cord data STP RJ45 2P	3 m	3606480186035	VDIR547405
Connection cord data STP RJ45 2P	5 m	3606480186042	VDIR547406

Stacking cord

Put in serie 2 Performance Core Units.

- Connectivity: RJ45/RJ11
- Sheath material: black PVC

Type	Length	EAN code	Reference
Stacking cord, black	1 m	3606480185984	VDIR542111

P119791



Patch cord

Allow to connect the ADSL master filter to the Performance Core Unit.

Type	Length	EAN code	Reference
Tele cord RJ11-RJ11, black	0.3 m	3606480185960	VDIR541101

P93704



Connection cord

Connect your phone/fax to the wall outlet.

- Connectivity: RJ45 - RJ11
- Colour: black

Type	Length	EAN code	Reference
Tele cord RJ11-RJ45 pair 4-5, black	2 m	3606480185977	VDIR542110

P85672



TV and radio

Coaxial cord

Connect your AV device (TV, DVB-T decoder, cable receiver) to the wall outlet.

- Connectivity: coaxial 9.52 mm - RJ45
- Colour: black

Type	Length	EAN code	Reference
TV-R coaxial cord 75-100 Ohms Balun	2 m	3606480186769	VDIR643000

P148027



Telepatch Cord

Connect your IEC (Tele Type F) to RJ45

- Colour: white

Type	Length	EAN code	Reference
Data 100 Ohms/Tele Type F - 75 Ohm patch cord	0.4 m	3606481355522	VDIR644000

P140586



FIX Family tool-less accessories

DIN accessory

Allow tool-less fixing of the DIN rail.

- Assembly of 1 DIN rail mounted on 2 fix DIN (237 mm) + earth terminal block

Type	Length	EAN code	Reference
Fix DIN	237 mm	3606480627842	VDIR380001

P140587



Box accessory

Allow the tool-less fixing of the active components (Box ADSL, switch, ONT, etc).

- 2 fix box compatible with component thickness from 25 mm to 85 mm

Type	EAN code	Reference
Fix Box	3606480627859	VDIR380002

P140588



Screw accessory

Allow the tool-less fixing of the components using screws (splitters).

- 2 fix screw

Type	EAN code	Reference
Fix Screw	3606480627866	VDIR380003

P140589



Cable accessory

Allow the cable/patchcord management inside the telecom cabinet.

- 5 fix cable

Type	EAN code	Reference
Fix Cable	3606480627873	VDIR380004

P140590



RJ45 accessory

Allow the support of the RJ45 S-One connectors equipped with:

- A thumb wheel for the choice of application
- 6 pictos sheet for the choice of rooms
- Blank Labels for free identification
- Earthing automatic clip for maximal security

Type	EAN code	Reference
Fix RJ45	3606480627880	VDIR380005

P136703



P136704



P93715



P93717



P86655



P119786



FTTH

- Optical fibre reception point coming from the internet access supplier
- To clip on DIN rail/to fix by screw

Type	EAN code	Reference
DTLo 4 SC/APC	3606480578540	VDIR326040

Type	EAN code	Reference
DTLo 2 SC/APC	3606480578533	VDIR326030

Tools

Test kit

Simulate input signals in order to make the installation commissioning (continuity, short-circuit, connection inversion).

- 1 injector
- 1 automatic testor
- All cables and plugs needed

Type	EAN code	Reference
Test kit	3606480186097	VDIR580010

Remote test kit unit

Spare part in case of losing the initial remote unit.

- 1 remote injector

Type	Length	EAN code	Reference
Test kit remote unit - patch cord FTP	1 m	3606480186103	VDIR580011

Tool kit

Provide all the mandatory tools to install the system.

- 1 cable stripper
- 1 connecting tool
- 1 flat screw driver for gain adjustment
- 1 Phillips screw driver for fixing
- 1 key for F connector
- 1 cutting clamp

Type	EAN code	Reference
Tool kit for Performance Core Unit	3606480186110	VDIR580020

Spare parts

Power supply Performance

Provide the power supply to the Performance Core Unit.

Type	EAN code	Reference
Power supply for Performance Core Unit	3606480185885	VDIR515001

LexCom Home

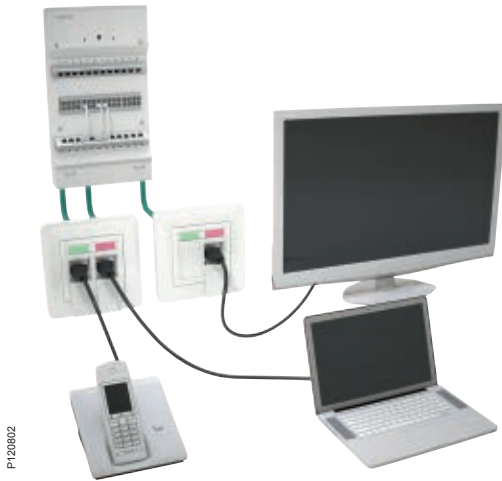
Premium

Comparison chart

	Telephone	Data (Megabit)	TV	CATV	SAT TV
Essential	●	1000	●○	●○	○
Performance	●	100	●	●	○
Premium	●	1000	●○	●○	○

● RJ45. ○ Coax socket.

A step further for the advanced user



If your customer wants access to satellite TV without coax cabling, LexCom Home Premium is the choice, providing IR link technology and a maximum broad band capacity. It's a bit more exclusive than our other two networks, but the tailor-made qualities definitely makes LexCom Home Premium worth its price!

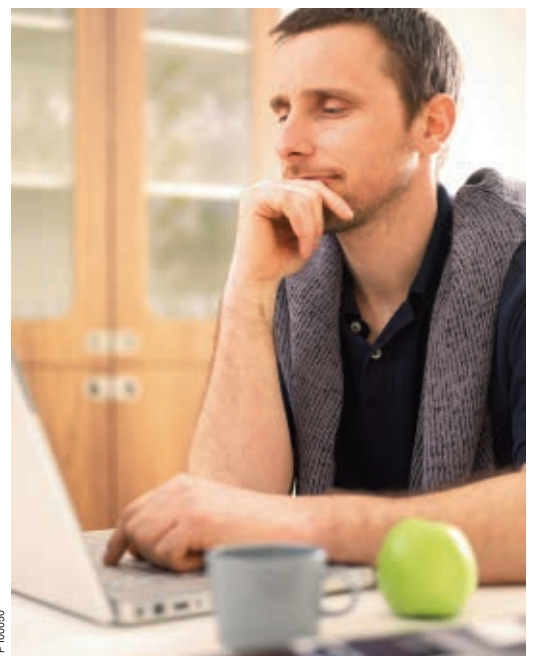
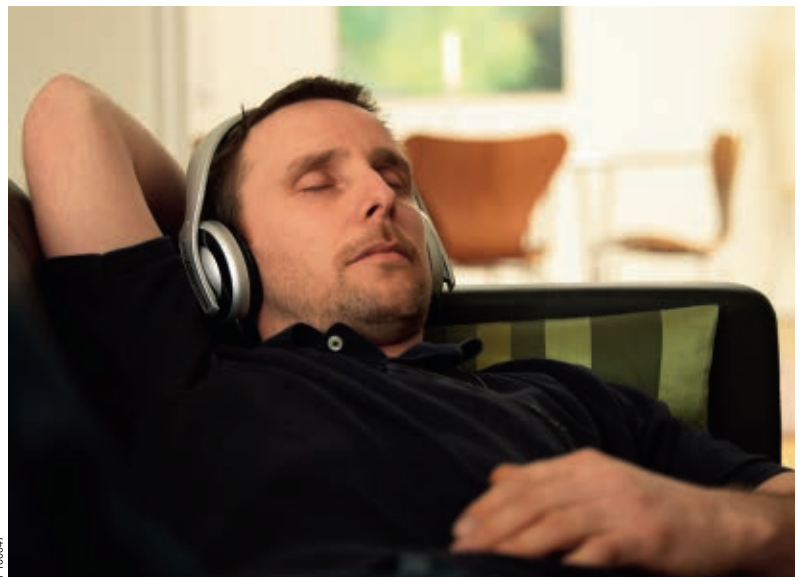
Managing the fast IT evolution and a very high gigabit rate are not the only advantages with LexCom Home Premium. This network will also untangle homes from long or excessive extension cords. If you install a couple of outlets in each room, it's just to plug in any RJ45-device in the nearest one. Every outlet can be used both for phones, television and data.

Easy to expand

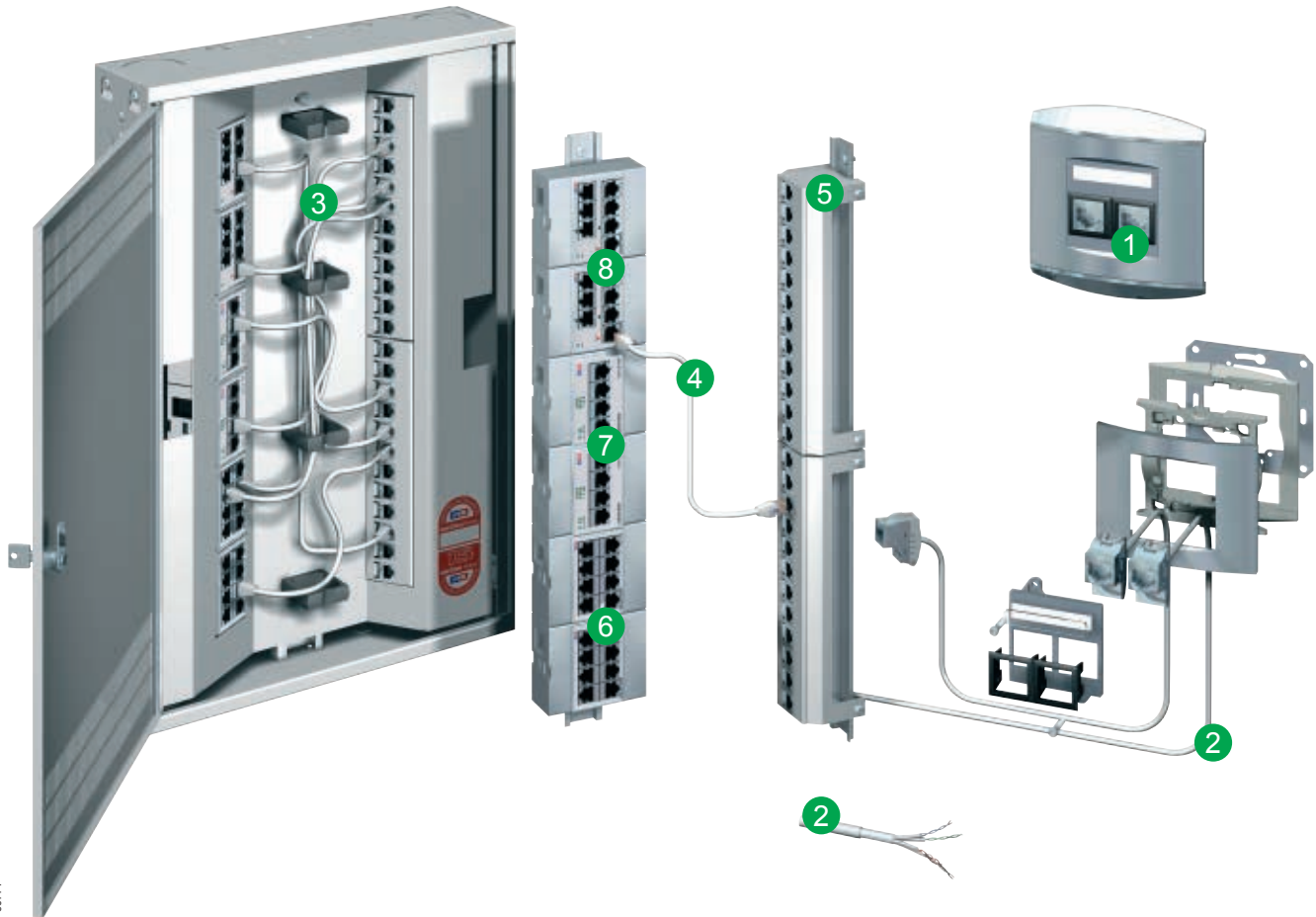
The system is easy to install and expand, thanks to a well thought-out construction with many compact modules. To enhance your customers comfort, add an AV modulator and an IR link. Then the DVD or satellite receiver can be remote controlled and TV watched from any room!

This is what's needed

Decide where outlets should be placed and install them. Shielded eight wire cables lead from the outlets to the universal patch modules, with patch cables connecting the signals. All the needed modules for antenna amplifying, computer network, phones and so on, are then placed inside the distribution centre cabinet, which can be flush or surface mounted. The centre accommodates six active components and 24 patch outlets. It can't get much simpler.

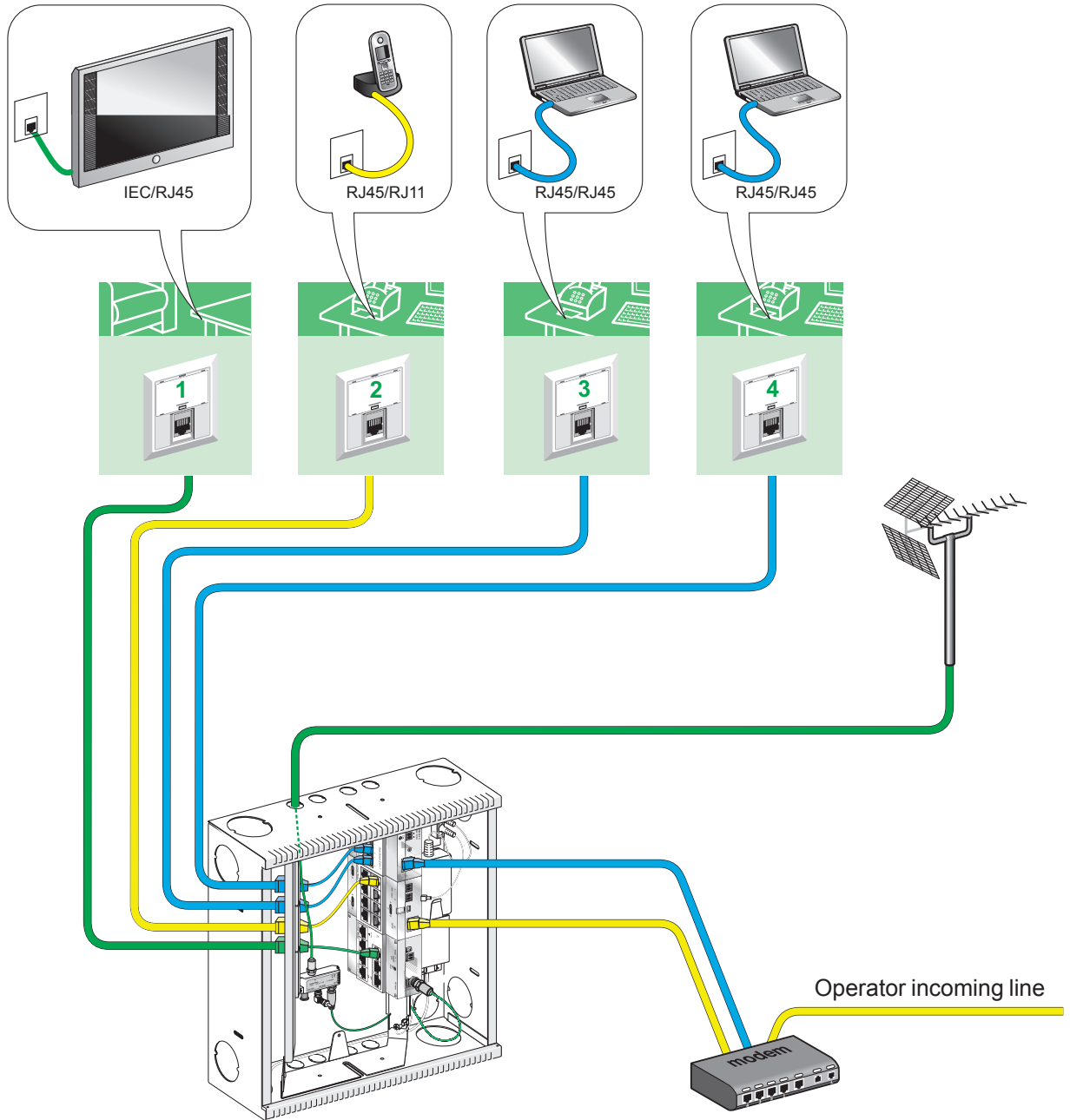


LexCom Home Premium components

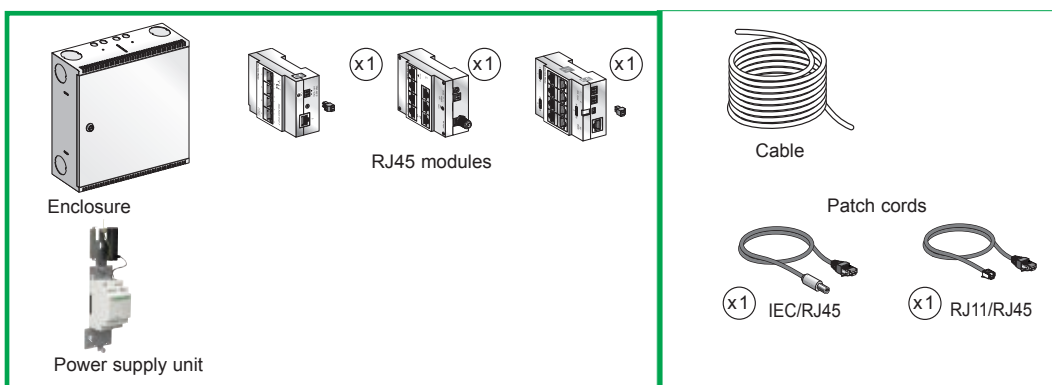


1. Universal outlet with one or two jacks.
2. Shielded installation cable, eight wires.
3. A distribution centre where incoming cables from aerial, cable TV, phone and the broadband network are connected to the home network.
4. Patch cables for simple connection of the signals to the wall outlets.
5. Universal patch modules.
6. Distribution module for eight connection points for phone/ISDN/fax/modem.
7. Switch module for computer network with four connection points.
8. Antenna amplifier for six TV connections.

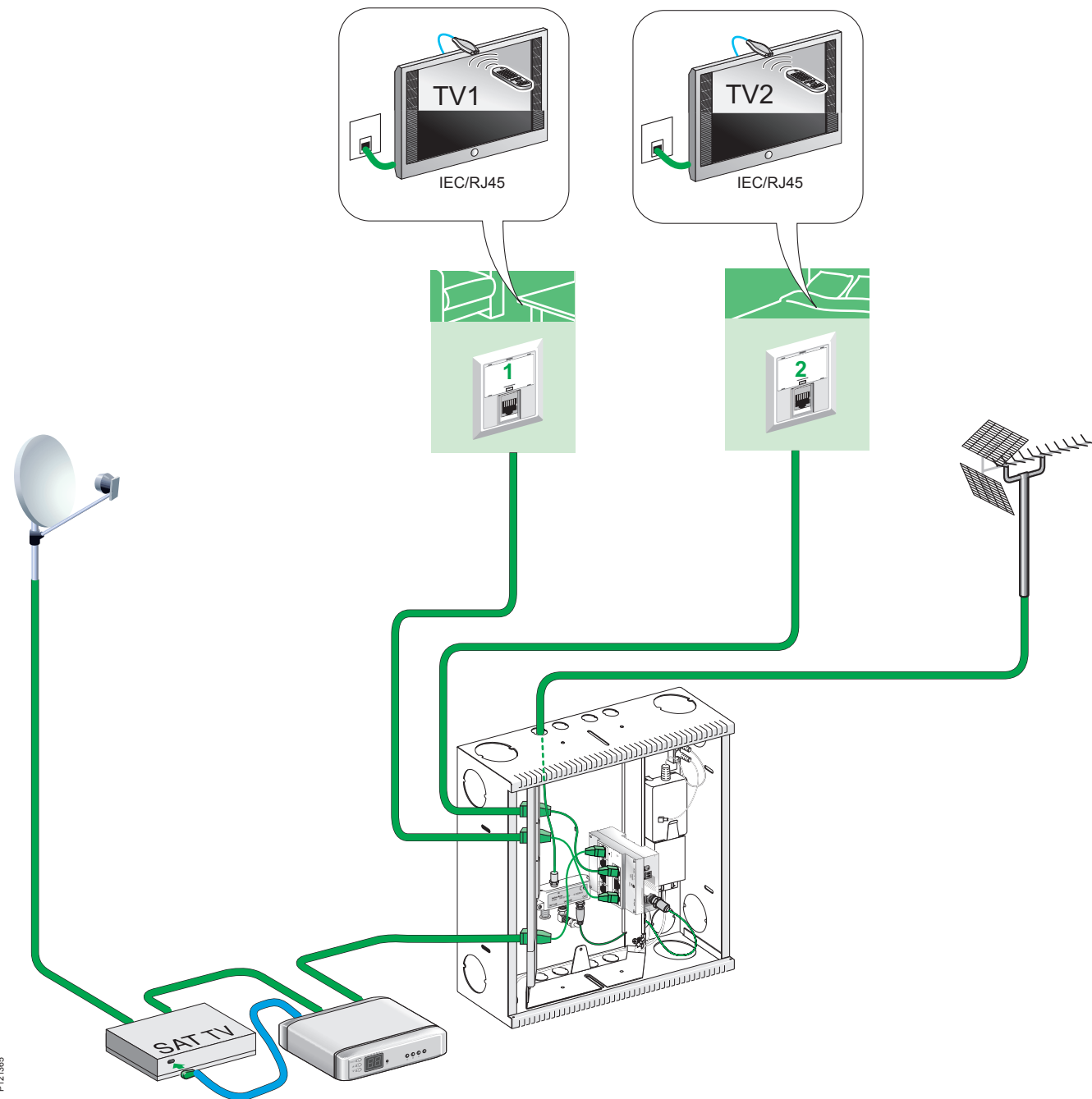
Applications and installation examples



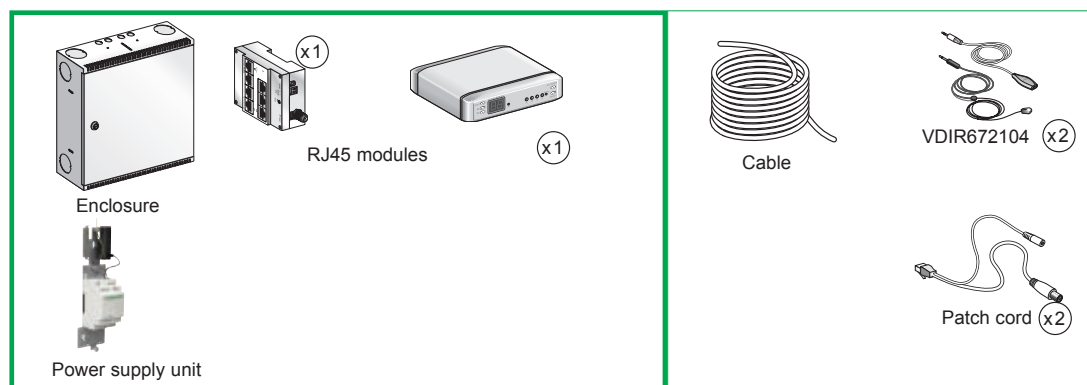
LexCom Home Premium system components



Applications and installation examples



P121085





P140578

Enclosure and accessories Active Box

Resi9 enclosure 3 rows.

- Grid structure
- 3 fix box for the box fixing (max box dimensions: 330x245x85 mm)
- 3 power sockets 230 V for the active components power supply (to be connected to a circuit breaker)
- 4 fixing one-quarter screws to fix the cabinet on Resi9 trunk
- Door in option

Type	Dimension	EAN code	Reference
Active Box (ADSL box dedicated)	500x252x108 mm	3606480944758	VDIR511004



P140586

FIX Family tool-less accessories

DIN accessory

Allow tool-less fixing of the DIN rail.

- Assembly of 1 DIN rail mounted on 2 fix DIN (237 mm) + earth terminal block

Type	Length	EAN code	Reference
Fix DIN	237 mm	3606480627842	VDIR380001



P140587

Box accessory

Allow the tool-less fixing of the active components (Box ADSL, switch, ONT, etc).

- 2 fix box compatible with components thickness from 25 mm to 85 mm

Type	EAN code	Reference
Fix Box	3606480627859	VDIR380002



P140588

Screw accessory

Allow the tool-less fixing of the component using screws (splitters).

- 2 fix screw

Type	EAN code	Reference
Fix Screw	3606480627866	VDIR380003



P140589

Cable accessory

Allow the cable/patchcord management inside the telecom cabinet.

- 5 fix cable

Type	EAN code	Reference
Fix Cable	3606480627873	VDIR380004



P140590

RJ45 accessory

Allow the support of the RJ45 S-One connectors equipped with:

- A thumb wheel for the choice of application
- 6 pictos sheet for the choice of rooms
- Blank Labels for free identification
- Earthing automatic clip for maximal security

Type	EAN code	Reference
Fix RJ45	3606480627880	VDIR380005



P11305, P119786

Connectors

Category 6, 6A connectors

Type	EAN code	Reference
S-One shielded RJ45 Cat 6	3606480384417	VDIB17726B01
S-One shielded RJ45 Cat 6A	3606480384455	VDIB1772XB01



P136703, P136704

FTTH

- Optical fibre reception point coming from the internet access supplier
- To clip on DIN rail/to fix by screw

Type	EAN code	Reference
DTIo 4 SC/APC	3606480578540	VDIR326040
DTIo 2 SC/APC	3606480578533	VDIR326030

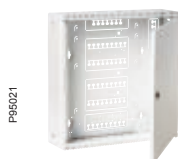


P62573, P63221

Enclosure Apollo I

Metallic structure adapted for RJ45 modules.

Type	Dimension	EAN code	Reference
Distr Apollo 22 inch DIN-DPM, white	556x356x100 mm	3606480186165	VDIR611001
Distr Apollo 14 inch DIN-DPM, white	356x356x100 mm	3606480186172	VDIR611002



P95021

Enclosure and accessories Apollo II

Metallic structure adapted for RJ45 modules.

Type	EAN code	Reference
Apollo II Uni 14 355/100/355		518533144



P95020

Apollo II Uni 22 556/100/355		518533244
------------------------------	--	------------------



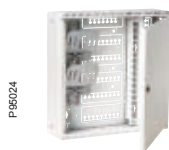
P146188

Premium Apollo II 14" kit		VDIR691009
---------------------------	--	-------------------



P146189

Premium Apollo II 22" kit		VDIR691010
---------------------------	--	-------------------



P95024

Apollo II Bredband 14 355/100/355		518533644
-----------------------------------	--	------------------



P95018

Apollo II Bredband 22 556/100/355		518533744
-----------------------------------	--	------------------



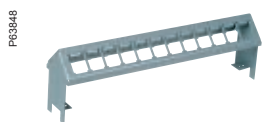
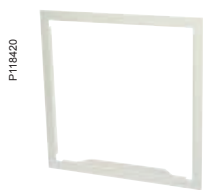
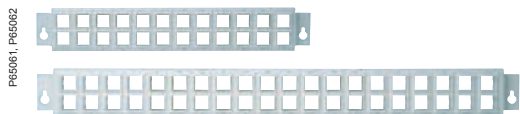
P138172

Power supply Apollo II

Provide the power for the modules inside the Apollo II cabinet. Power supply Apollo II

- Power supply unit dedicated for Apollo II cabinets - 4 modules can be power supplied
- Output: 12 V DC - Consumption: 25 W maxi
- Maximum load: 18 W
- Input: 100 - 240 V AC/50-60 Hz
- Wiring directly on power supply: 0.5 to 2.5 mm², solid conductor
- Class 1 isolation
- Accessories supplies: fixing bracket, 5-way magazine and 3 pieces 12 V jumper cords
- Max. operating temperature: -25 to 55°C

Type	EAN code	Reference
Power supply for Apollo II - 4 outputs	3606480524424	VDIR615014



Other accessories Apollo I and Apollo II

Patch panel HD 24 ports

Receive the RJ45 connector within the telecommunication cabinet (Apollo only).

- High Density (HD) panels for the Apollo 14" or 22" enclosures
- 2 rows of WB RJ45 connectors
- Material: steel/colour: white
- Provided accessories: mounting frames (clips) to support installation of the LexCom Home WB connectors

Type	EAN code	Reference
P214 patch panel HD 24 ports white	3606480186271	VDIR612004
P222 patch panel HD 40 ports white	3606480186288	VDIR612005

Patch panel DIN rail

Receive the RJ45 connector within the telecommunication cabinet (DIN rail - S-One connector only).

Type	EAN code	Reference
DIN rail patch panel 12P 12 RJ45 S-One	3606480397509	VDIR612021

DIN rail patch panel 4P 4RJ45 S-One	3606480397493	VDIR612020
-------------------------------------	---------------	-------------------

Trim frames

Trim frames for flush mounting of vertical 22" and 14" steel enclosures and spare keys for the Apollo enclosures.

- The frame will cover the edge from the cutout for the enclosure in the wall
- Stepless (floating) adjustment and latched with screws from top/bottom (inside) of the cabinet

Type	EAN code	Reference
Trim frames 22 inch flush mount white	3606480186400	VDIR613010
Trim frames 14 inch flush mount white	3606480186417	VDIR613011

Enclosure and accessories Formula

Enclosure Formula

Place to put data, phone and TV distribution modules to dispatch the signals all around the house.

- Surface or flush mounted telecommunication centre for 2 patch panels P112 and 1 DIN rail in the centre position
- Metal patch panels and DIN rails to provide strength and earthing continuity
- Patch panels contain 12 ports each (24 ports max for the cabinet). DIN rail has space for 3 active modules
- The patch panels are angled towards the centre DIN rail to provide good installation conditions and reduce stress to the patch cables
- Colour: white or grey

Type	EAN code	Reference
distrib Formula surf-wb white	3606480186189	VDIR611003
distrib Formula flush-wb white	3606480186202	VDIR611005

Power supply Formula

Provide the power supply up to 3 modules in a Formula enclosure.

- Power supply unit dedicated for Formula cabinets - 3 modules can be power supplied
- Output: 12 V DC - Consumption: 25 W maxi
- Maximum load: 18 W
- Input: 100 - 240 V AC/50-60 Hz
- Wiring directly on power supply: 0.5 to 2.5 mm², solid conductor
- Class 1 isolation
- Accessories supplies: fixing bracket, 5-way magazine and 3 pieces 12 V jumper cords
- Max. operating temperature: -25 to 55°C

Type	EAN code	Reference
Power supply for Formula - 3 outputs	3606480186455	VDIR615003

Patch panel 12 ports

Receive the RJ45 connector within the telecommunication cabinet (DIN rail)

- Designed for Formula enclosures only
- Width: 13 DIN units (13x18 mm) on the DIN rail
- Height: 25 mm
- 12 x RJ45 ports WB connector
- 45° angle to ensure optimal protection and access for the patch cords
- Colour: silver/Material: steel

Type	EAN code	Reference
P112 patch panel 12 ports silver	3606480186257	VDIR612002

PG3847



PG3846



PG3189



PG406, P11195



PG1877



PG1880



Standard DIN rail enclosures

Patch panel 12 ports

Receive the RJ45 connector within the telecommunication cabinet (Formula). Designed for standard DIN enclosures, the uplift units are included.

- Width: 13 DIN units (13 x 18 mm) on the DIN rail
- Height: 25 mm
- 12 x RJ45 ports WB connector
- 45° angle to ensure optimal protection and access for the patch cords
- Colour: white/Material: steel

Type	EAN code	Reference
P113 patch panel 12 ports white	3606480186264	VDIR612003

Patch panel 5 ports

Receive the RJ45 connector within the telecommunication cabinet (DIN rail). Designed for standard DIN enclosures, provided that the uplift unit are included.

- Width: 6 DIN units (6x18 mm) on the DIN rail
- Height: 25 mm
- 5 x RJ45 ports WB connector
- 45° angle to ensure optimal protection and access for the patch cords
- Colour: white RAL9003/Material: steel

Type	EAN code	Reference
P106 patch panel 5 ports white	3606480186240	VDIR612001

Infrastructure

Cables and connectors

Cables

Make the link between the enclosure modules and the wall outlets.

- S/STP structure: each pair is individually shielded in a metal foil and all pairs together covered by a tinned copper wire braid
- Bandwidth: 0 - 900 MHz (CATV compatible)
- Unique Color Coding matching with the wire map of the connector
- NEXT:
 - 86 dB @ 100 MHz
 - 78 dB @ 300 MHz
 - 71 dB @ 800 MHz
- Impedance: 100 Ω
- Bending Radius: min 3x diameter
- Diameter: 7.5 mm
- LSZH material

Type	Length	EAN code	Reference
Cable S-STP 4 Pairs LSFROH white	300 m - reel	3606480186615	VDIR634130
Cable S-STP 4 Pairs LSFROH white	500 m - reel	3606480186622	VDIR634150

WB connector

Tool less Wide Band STP connector.

Provide in the home installation a Cat 6 link. Very good transmission quality for CATV signals up to 900 MHz. International colour coding.

- Bandwidth:
 - 0-900 MHz (CATV)
 - 0-250 MHz (Cat 6)

Type	EAN code	Reference
Shielded WB connector RJ45, Wideband DPM	3606480186974	VDIR651601
Shielded WB connector RJ45, Wideband DPM, 500 pieces	3606480186981	VDIR651602
Shielded connector, Cat 6, 10 pieces	3606485000173	VDI552012

Multimedia packs

Telephone

Telephone connection cords

Connect your phone to the wall outlet. To be used with T104 module only.

- Unshielded cables
- Connectivity: RJ11/RJ45

Type	Length	EAN code	Reference
Tele cord RJ11-RJ45 line 2 white	2 m	3606480186721	VDIR642106

Telephone connection cord for T110

Connect your 2 ISDN lines to the wall outlet - To be used with T110 ISDN module.

- Unshielded cable
- Connectivity: RJ11/RJ45

Type	Length	EAN code	Reference
Tele cord RJ11-RJ45 lines 1 & 2 black	2 m	3606480186660	VDIR642100
Tele cord RJ11-RJ45 lines 1 & 2 black	5 m	3606480186677	VDIR642101

P10674, P10678, P10675



TV and radio

TV and radio modules

Dispatch the TV antenna signals over 6 outlets and re-distribute the AV signals from AV modulators.

- Input power: 12 V DC - 6 W max
- Output level: 6 x 108 dBμV
- CSO: 88 dBμV (42 channels)
- Gain: 27 ± 2 dB
- Attenuation: 0-20 dB (adjustable)
- Return gain: 5 dB
- AV entry level: 60-80 dBμV

A111-00

- Connectivity:
 - 7 RJ45 STP output (2 return paths, 1 AV link)
 - 1 IR link output
 - 1 RF input: F-Type connector
- Bandwidth: 42 - 860 MHz

A111-30

- Connectivity:
 - 7 RJ45 output (2 return paths, 1 AV link)
 - 1 RF input: F-Type connector
- Bandwidth: 47 - 860 MHz
- Return path: 5-30 MHz

A111-65

- Connectivity:
 - 7 RJ45 STP output (2 return path, 1 AV link)
 - 1 IR link outputs
 - 1 RF input: F-Type connector
- Bandwidth: 85 - 860 MHz
- Return path: 5-65 MHz

Type	Dimension	EAN code	Reference
R-TV module A111-00 - 6 & 1 ports DIN	72x37x86	3606480186547	VDIR627100
R-TV module A111-30 - 6 & 1 ports DIN	72x37x86	3606480186554	VDIR627130
R-TV module A111-65 - 6 & 1 ports DIN	72x37x86	3606480186561	VDIR627165

P14877



Enclosures - patch cords S-STP

Connect inside the telecommunication cabinet the enclosure modules to the patch panel. Order the same number as the number of wall outlets connected.

- Exclusively dedicated to use inside the communication cabinet between active modules and patch panels
- Compliant with all application: TV, radio, data, phone
- Cat 6 STP
- Material: LSZH
- Sheath: light grey (RAL7035)

Type	Length	EAN code	Reference
Patch cord S-STP 3 Lengths TV-Data-Tel	26, 29, 32 cm	3606480186912	VDIR647401

P8675, P8674



Connection - TV and radio cord with IR link

Connect a TV or an audio tuner to a wall outlet, and allow to pilot a AV sourcing remotely.

- Double shielding with IR Link
- Bandwidth: 1 - 862 MHz
- Connectivity: RJ45 - IEC male 9.52 mm
- Impedance (input): RJ45 - 100 Ω
- Impedance (output): coaxial - 75 Ω
- Sheath: white or black
- Adapter included in each blister package for radio (female)

Type	Length	EAN code	Reference
TV-R cord XU110 IR link Balun white	3 m	3606480186776	VDIR643001
TV-R cord XU110 IR link Balun black	3 m	3606480186783	VDIR643002

P8673



Connection - TV and radio connection cord

Connect a TV or an audio tuner to a wall outlet.

- Double shielding
- Bandwidth: 1 - 862 MHz
- Connectivity: RJ45 - IEC male 9.52 mm
- Impedance (input): RJ45 - 100 Ω
- Impedance (output): coaxial - 75 Ω
- Sheath: black
- Adapter included in each blister package for radio (female)

Type	Length	EAN code	Reference
TV-R cord XU100 75-100 Balun black	3 m	3606480186790	VDIR643003



P98981

Connection - radio connection cord

Connect an audio tuner to a wall outlet.

- Bandwidth: 86 - 109 MHz
- Connectivity: RJ45 - IEC female 9.52 mm
- Impedance (input): RJ45 - 100 Ω
- Impedance (output): coaxial - 75 Ω
- Sheath: white or black

Type	Length	EAN code	Reference
R cord XR110 FM Pass Balun white	3 m	3606480186806	VDIR643004



P75957

TV and radio accessories

Coax splitter

Split the antenna signal to 2 outputs.

- To be installed in the LexCom Home cabinets when 2 pcs TV/R amplifiers are installed - sharing the incoming TV signal

Type	EAN code	Reference
Coax splitter 2 ways	3606480217432	VDIR327002



P118426

Attenuators

Plug-in unit for outlets to compensate for short link problems on TV signals.

- Support only distribution of R/TV signals and the AV/IR link
- Attenuation: 5, 10 or 15 dB @ 800 MHz

Type	EAN code	Reference
Attenuator ITA05 5 dB 100 Ohms RJ45	3606480186820	VDIR647001
Attenuator ITA10 10 dB 100 Ohms RJ45	3606480186837	VDIR647002
Attenuator ITA15 15 dB 100 Ohms RJ45	3606480186844	VDIR647003



P95870

Audio Video distribution

Audio modulator

Allow to redistribute an audio source (PC for example) to an audio amplifier.

- Connectivity:
 - 2 RCA L/R for connecting the stereo source
 - 1 RJ45 for connecting to communication socket
 - 1 jack for IR receiver to control remotely the source
- Power supply: 12 V DC - 70 mA max
- Frequency band: 89 - 106 MHz
- Output: 84 selectable preset channels
- Accessories: connection cord + power supply
- Colour: black

Type	Dimension	EAN code	Reference
PC Player PCP110	169x84x49 mm	3606480187087	VDIR673002



P61879

Audio Video modulator connection cord

Connect your AV modulator to the wall outlet.

- Double shielding patch cord to connect Audio Video modulators to the communication sockets
- Connectivity RJ45 to RJ45 interface
- Sheath: light grey

Type	Length	EAN code	Reference
AV cord S-STP RJ45-RJ45 100 Ohms	2 m	3606480186950	VDIP185X46020
AV cord S-STP RJ45-RJ45 100 Ohms	3 m	3606480186967	VDIP185X46030

P60250



Tools

Cable stripper

Allow to strip the cable without damaging the shielding.

- Adapt to the thickness of the sheath

Type	EAN code	Reference
Cable stripper	3606480186127	VDIR580021

P65004



Spare parts

Connector

2-pole screw terminal female plug to use at the enclosure active modules for power supply connectivity.

- To use when the LexCom Home system is installed in a generic adaptation and a different DIN power supply is used
- Connector with a mechanical keyway

Type	EAN code	Reference
Connector 2 poles screw terminal	3606480186394	VDIR613009

518533

518533144.....	36
518533244.....	36
518533644.....	36
518533744.....	36

VDI

VDI552012.....	38
----------------	----

VDIB

VDIB1772XB01.....	19, 26, 35
VDIB17715U01.....	19
VDIB17716B01.....	19
VDIB17725U01.....	19
VDIB17726B01.....	19, 26, 35

VDICD

VDICD115118.....	20
VDICD115218.....	20
VDICD116118.....	20
VDICD136218.....	20
VDICD176218.....	20

VDIP

VDIP185X46020.....	
VDIP185X46030.....	

VDIR

VDIR312011.....	20
VDIR315002.....	20
VDIR315003.....	20
VDIR323005.....	19
VDIR326010.....	19, 26
VDIR326020.....	19, 26
VDIR326030.....	21, 28, 35
VDIR326040.....	21, 28, 35
VDIR327002.....	19, 40
VDIR327004.....	19
VDIR342202.....	20
VDIR346101.....	20
VDIR347102.....	20
VDIR380001.....	21, 27, 35
VDIR380002.....	21, 27, 35
VDIR380003.....	21, 27, 35
VDIR380004.....	21, 27, 35
VDIR380005.....	21, 27, 35
VDIR380006.....	21
VDIR380007.....	19
VDIR390006.....	17
VDIR390026.....	17
VDIR390036.....	18
VDIR390041.....	17
VDIR390042.....	18
VDIR390100.....	20
VDIR511004.....	18, 25, 35
VDIR512002.....	20
VDIR515001.....	28
VDIR523001.....	25
VDIR526001.....	26
VDIR528000.....	25
VDIR528010.....	25
VDIR534810.....	26
VDIR541101.....	27
VDIR542110.....	27
VDIR542111.....	26
VDIR547201.....	26
VDIR547402.....	26
VDIR547403.....	26
VDIR547404.....	26
VDIR547405.....	26
VDIR547406.....	26
VDIR580010.....	28

VDIR580011.....	28
VDIR580020.....	28
VDIR580021.....	41
VDIR590003.....	25
VDIR611001.....	36
VDIR611002.....	36
VDIR611003.....	37
VDIR611005.....	37
VDIR612001.....	38
VDIR612002.....	37
VDIR612003.....	38
VDIR612004.....	37
VDIR612005.....	37
VDIR612020.....	37
VDIR612021.....	37
VDIR613009.....	41
VDIR613010.....	37
VDIR613011.....	37
VDIR615003.....	37
VDIR615014.....	36
VDIR627100.....	39
VDIR627130.....	39
VDIR627165.....	39
VDIR634130.....	38
VDIR634150.....	38
VDIR642100.....	38
VDIR642101.....	38
VDIR642102.....	20
VDIR642103.....	20
VDIR642106.....	38
VDIR643000.....	27
VDIR643001.....	39
VDIR643002.....	39
VDIR643003.....	39
VDIR643004.....	40
VDIR644000.....	27
VDIR647001.....	40
VDIR647002.....	40
VDIR647003.....	40
VDIR647401.....	39
VDIR651601.....	38
VDIR651602.....	38
VDIR673002.....	40
VDIR691009.....	36
VDIR691010.....	36



Green Premium™

Endorsing the most eco-friendly products in the industry



Green Premium is the only label that allows you to effectively develop and promote an environmental policy whilst preserving your business efficiency. This ecolabel guarantees compliance with the most up-to-date environmental regulations, but it does more than this.

Over 75% of Schneider Electric manufactured products have been awarded the Green Premium ecolabel



Discover what we mean by green

Check your products!

Schneider Electric's Green Premium ecolabel is committed to offering transparency, by disclosing extensive and reliable information related to the environmental impact of its products:

RoHS

Schneider Electric products are subject to RoHS requirements at a worldwide level, even for the many products that are not required to comply with the terms of the regulation. Compliance certificates are available for products that fulfil the criteria of this European initiative, which aims to eliminate hazardous substances.

REACH

Schneider Electric applies the strict REACH regulation on its products at a worldwide level, and discloses extensive information concerning the presence of SVHC (Substances of Very High Concern) in all of these products.

PEP: Product Environmental Profile

Schneider Electric publishes the most complete set of environmental data, including carbon footprint and energy consumption data for each of the lifecycle phases on all of its products, in compliance with the ISO 14025 PEP ecopassport program. PEP is especially useful for monitoring, controlling, saving energy, and/or reducing carbon emissions.

EoLI: End of Life Instructions

Available at the click of a button, these instructions provide:

- Recyclability rates for Schneider Electric products.
- Guidance to mitigate personnel hazards during the dismantling of products and before recycling operations.
- Parts identification for recycling or for selective treatment, to mitigate environmental hazards/ incompatibility with standard recycling processes.

Life Is On

Schneider
Electric

Schneider Electric Industries SAS

35, rue Joseph Monier
CS 30323
92506 Rueil Malmaison Cedex
France

RCS Nanterre 954 503 439
Capital social 896 313 776 €
www.schneider-electric.com

08-2018
LSB03031EN

© 2018 - Schneider Electric. All Rights Reserved.
All trademarks are owned by Schneider Electric Industries SAS or its affiliated companies.

This document has been
printed on recycled paper

