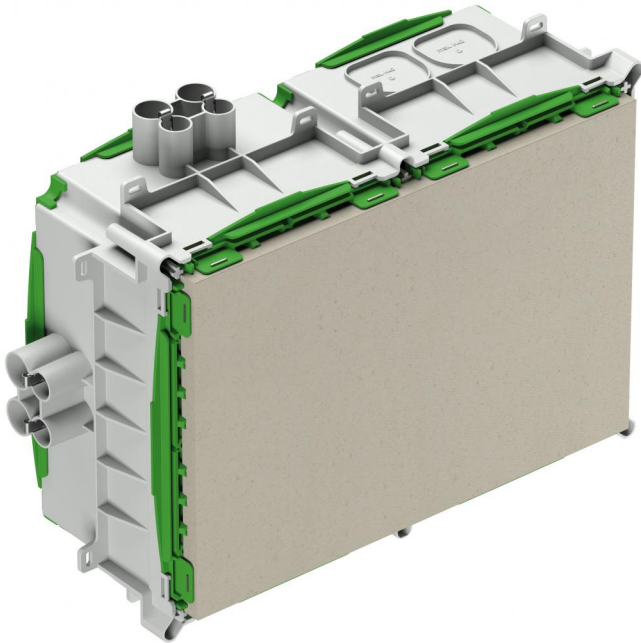


Installation housing

IBTLED 3-f E



IBTLED 3-f E

Installation housing

Productnumber: 98220202

Dimensions: 227 x 400 x 135 mm

Installation housing, for prefabricated construction, halogen-free, for the installation of LV/HV/LED lights and speakers, announcement and call systems, for the installation of VDE-tested lights to DIN EN 60598 (VDE 0711), and with F or MM marking, with protection class IP30, Rated insulation voltage: 400V AC, Halogen free

maximum installation depth for luminaires, speakers, announcement and call systems: 100 mm, lamp output, halogen max. 75 W, lamp output LED max. 35 W, additional inserts 4 x to M40, outlet aperture: Fermacell® plasterboard, variable to max. 200 mm x 300 mm, 16 combi-conduit entries 8 x 16 mm, 8 x 19 mm, integrated conduit stopper and strain relief for conduits 16 mm, 19 mm, adhesive fixing or nail installation, integrated combination conduit insertion and membrane, Sealing area M16 - M40



Technical Data

electrical characteristics

| | |
|------------------------------|-----------------------|
| Rated insulation voltage AC: | 400 V |
| Type of protection: | IP30 |
| Suitable for: | Concrete construction |
| maximum LED power: | 35 Watt |

Colours

| | |
|-------------------|-------|
| Base unit colour: | grey |
| Cover colour: | green |

Dimensions

| | |
|-------------------------------|------------|
| Width: | 227 mm |
| Length: | 400 mm |
| Height: | 135 mm |
| Inner length: | 300 mm |
| Inner width: | 200 mm |
| Inner height: | 125 mm |
| maximum installation cut-out: | 200.300 mm |

Material characteristics

| | |
|--|--------|
| Industry quality: | no |
| Halogen free: | yes |
| Flammability class according with UL94: | HB |
| Glow-wire flammability according to EN 60695-2-11: | 650 °C |

mechanical properties

| | |
|--|--------------------------------------|
| Type of fastening: | adhesive fixing or nail installation |
| Fermacell board load bearing capacity: | 5 kg |
| Type of fastening: | Concrete construction |

Ambient conditions

| | |
|------------------------------|--------|
| max. relative humidity 25°C: | - % |
| max. relative humidity 40°C: | 50 % |
| Min. ambient temperature: | -25 °C |
| Max. ambient temperature: | 60 °C |
| 24h ambient temperature: | 35 °C |

Material

| | |
|---------------------|---------------|
| Base unit material: | Polypropylene |
| Cover material: | Polypropylene |