



# MASTER UltraEfficient LED candles and lusters

## MAS LEDLusterND2.3-40W E27 827 P45CL GUE

This is the most efficient LED candle from Philips brand. 210lm/W helps to concrete the company statement of sustainability. 50000 hour lifetime helps to extend the replacement cycle to reduce the waste. This is not only the high SPEC product, but also keep the light quality of Philips brand

### Product data

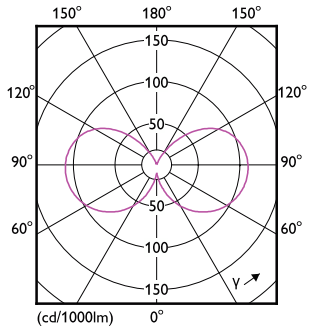
General Information	
Cap-Base	E27 [E27]
Nominal lifetime	50,000 hour(s)
Switching Cycle	50,000
Lighting Technology	LED
Flux measurement reference	Sphere
EU RoHS compliant	Yes
Light Technical	
Color Code	827 [CCT of 2700K]
Luminous Flux	485 lumen
Color Designation	Warm White (WW)
Correlated Color Temperature (Nom)	2700 K
Luminous Efficacy (rated) (Nom)	210 lm/W
Color Consistency	<6
Color rendering index (CRI)	80
LLMF At End Of Nominal Lifetime (Nom)	70 %
Flickering value (PstLM)	1

Stroboscopic effect value (SVM)	0.4
Photobiological safety according to EN 62471	RG1
Operating and Electrical	
Line Frequency	50 to 60 Hz
Input Frequency	50 to 60 Hz
Power Consumption	2.3 W
Lamp Current (Nom)	25 mA
Wattage Equivalent	40 W
Starting Time (Nom)	0.5 s
Warm-up time to 60% light	0.5 s
Power Factor (Fraction)	0.4
Voltage (Nom)	220-240 V
Voltage (Nom)	220 V
Temperature	
Ambient temperature range	-20 to +45 °C



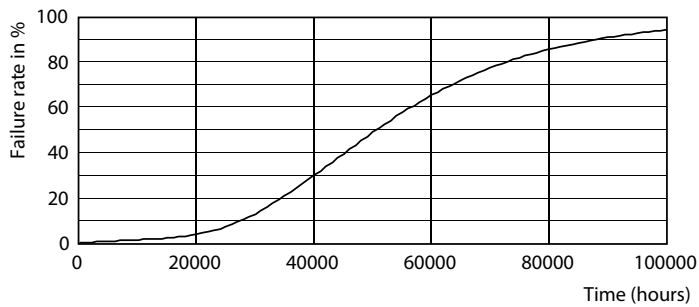
# MASTER UltraEfficient LED candles and lusters

## Photometric data

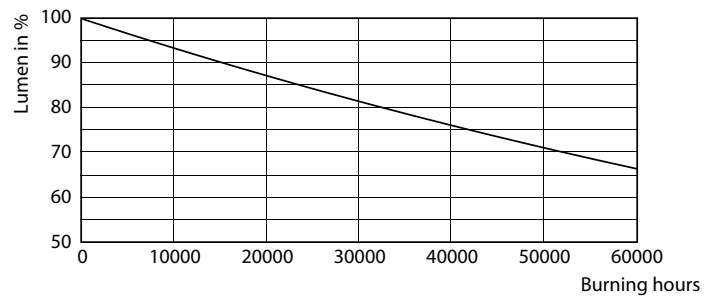


Light Distribution Diagram - MAS LEDLusterND2.3-40W E27 827 P45CL GUE

## Lifetime



Life Expectancy Diagram - MAS LEDLusterND2.3-40W E27 827 P45CL GUE



Lumen Maintenance Diagram - MAS LEDLusterND2.3-40W E27 827 P45CL GUE

