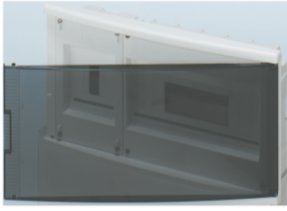


Product Data Sheet

GW40337

40 CDE



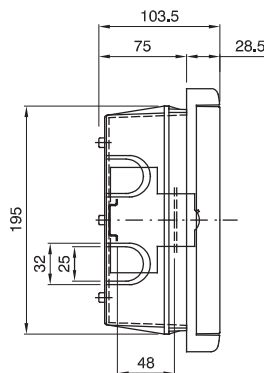
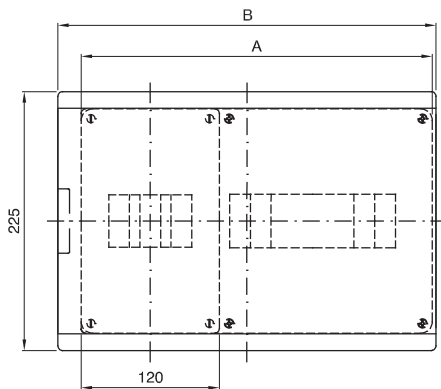
Spanish standard flush mounting enclosure IP40 with transparent door to house ICP power limiting circuit breaker. Sealable.

Insulation class	II	Rated current (A)	40
Outer dim. LxHxD (mm)	400x225x75	IP degree	IP40
Installation	Flush mounting enclosures	Mechanical resistance	IK07
Rated voltage (V)	400	R.U. 1407-D Classifications	CCE-ICP32
Door colour	Smoked Transparent	No. EN 50022 mod. ICP sect.	4
N. EN 50022 mod. CB section	12	Glow Wire Test	650 °C
Standard	IEC EN 60670-1; IEC EN 60670-24	Operating temperature	-15 ÷ +60°C
Insulation voltage	750 V	Electrocod	0311
Thermo-pressure with ball	70 °C	Type of knockout holes	Removable with tool
Type of enclosure	GP	Dispersible power (W)	10+15

BEHAVIOUR WITH CHEMICAL AND ATMOSPHERIC AGENTS

Saline solution	Acids		Bases		Solvents				Mineral oil	UV rays
	Concentrated	Diluted	Concentrated	Diluted	Hexane	Benzol	Acetone	Ethyl alcohol		
Resistant	Not resistant	Limited resistance	Limited resistance	Not resistant	Limited resistance	Not resistant	Not resistant	Limited resistance	Limited resistance	Resistant

DIMENSIONAL



		A	B
4+8M	GW 40 336 GW 40 338	305	328,5
4+12M	GW 40 337 GW 40 339	372	400

TECHNICAL SYMBOLOGY



II

IP

IP40

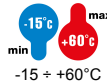
IK

IK07

GWT

650 °C

INSTALLATION



-15 ÷ +60°C



70 °C



Removable with tool

STANDARDS/APPROVALS

