

CE9147	DATA SHEET
Valid from: 26.07.2021	LWL splice for wall montage RAL 7035

Description

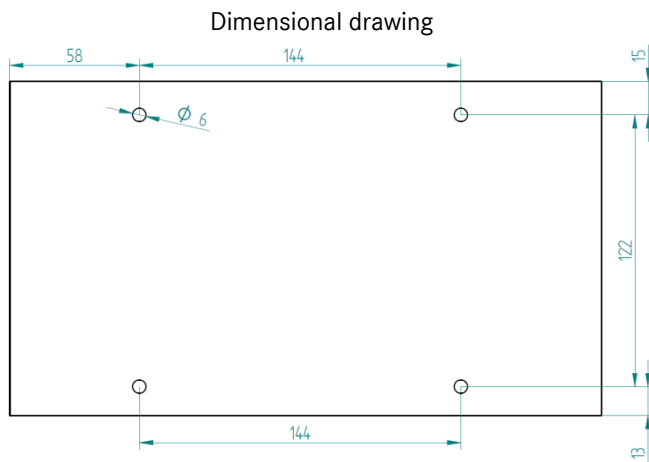
- Optical fiber splice distributor for wall montage
- Lockable
- Distribution plate included for 12x ST/FC or 6x SC-D/LC-Q



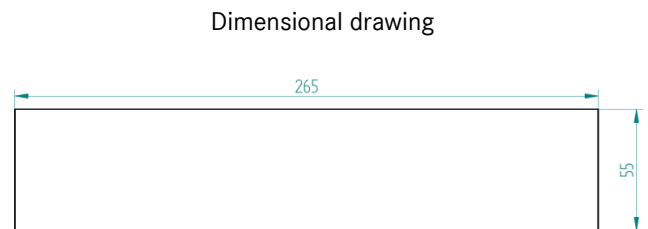
General characteristics

Cable entry	2 openings, dust-tight
Mountable splice cassettes (max.)	4 alternatively: 1 + 1 distribution plate
Distribution plate (included)	1x distribution plate for 12x ST- or FC-coupling 1x distribution plate for 6x SC-D- or LC-Q-coupling
Colour	RAL7035 (light grey)
Material	1.5 mm steel sheet
Weight	approx. 1 kg

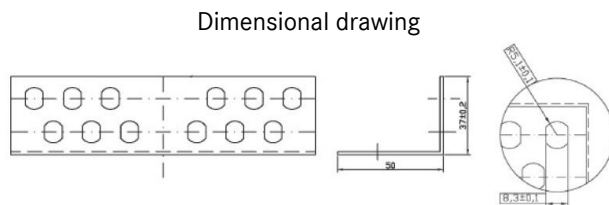
Technical drawing



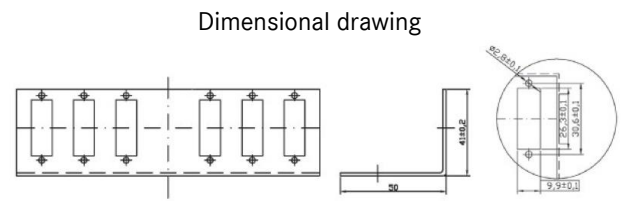
Wall mounting holes



Housing outer dimensions



Distribution plate 12x ST/FC



Distribution plate 6x SC-D/LC-Q

Standards

Fibre optic connector interfaces – Part 2: Type BFOC/2,5	IEC 61754-2
Fibre optic connector interfaces – Part 4: Type SC	IEC 61754-4
Fibre optic connector interfaces – Part 13: Type FC-PC	IEC 61754-13
Fibre optic connector interfaces – Part 20: Type LC	IEC 61754-20

CE9147	DATA SHEET
Valid from: 26.07.2021	LWL splice for wall montage RAL 7035

Application range

Office, industrial machinery and plant engineering

Note

Photographs are not true to scale and do not represent detailed images of the respective products.