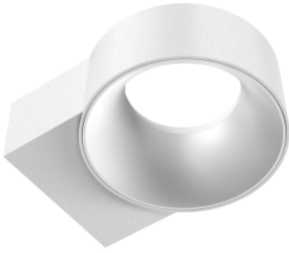


Product Data Sheet

GWF2110FR840

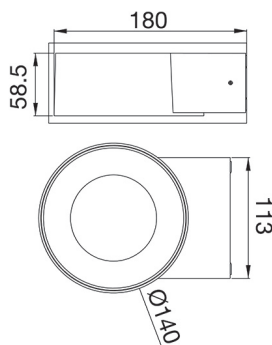
ELIA OL



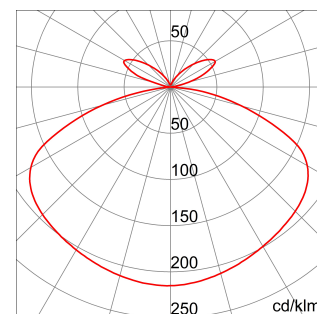
ELIA OL is an elegant die-cast aluminum fixture for wall mounting, ideal for indoor and outdoor architectural lighting such as: stairs, passageways or facades, quick and easy to install, with a clean and essential line. Designed in two different finishes (black and white), with double emission diffusing polycarbonate opal screen (top and down) to create a comfortable atmosphere, color temperatures of 3,000K, 4,000 K and 5,700 K and a color rendering index greater than 80. It has been designed to withstand temperature variations from -20 ° C to + 45 ° C, water and dust penetration up to IP65 degree and shocks up to IK08 degree. Light and handy ELIA OL is easy to install thanks also to the rear bracket for fixing, the quick-fit terminal placed in the back for the electrical wiring.

GENERAL INFORMATION		OPTIC AND ILLUMINATING FEATURES	
Context	External and internal architectural lighting	Optic	Wide opal
Luminaire Application	LED luminaire for accentuation Indoor / Outdoor	Unified Glare Rating	UGR ≤ 25
Unique digital code (Datamatrix)	Currently not present	Lumen output (lm)	650
Colour	White	Efficacy (lm/W)	81
Type of light source	LED	Colour temperature	4000 K
System power	8 W	Colour Rendering Index	CRI 80
LED Lifetime	L80B50 (Tq25°) = 50.000h	Standard Deviation Colour Matching	SDCM = 5
Weight (kg)	0.5	Photobiological Risk Class	RG0
Warranty	5 years	Standard	EN 60598-1; EN 60598-2-1; IEC/TR 62778; EN 62493
Stocking temperature	-20° +65°	ELETRICAL AND LIGHTING FEATURES	
Operating temperature	-20° +45°	Supply voltage	100-240 V
MATERIALS		Rated frequency (Hz)	50/60 Hz
Body	Die-cast aluminium	Driver	Built-in
Shield type	Polycarbonate	Driver failure rate	F025 (Tq=25°C) = 50.000 h
Optic	Bi-emission polycarbonate diffuser	Overvoltage protection	DM 0,5KV / CM 1KV
Gasket	-	Control System	ON / OFF
Locking Hook	-	INSTALLATION AND MAINTENANCE	
External screw	Stainless steel	Mounting and installation	Wall mounting
Colour	Powder coating	Tilt	-
STANDARDS AND APPROVALS		Wiring	With connection terminal
Classification	-	Fixing	Via stainless steel support
Device with reduced surface temperature	-	Light source replaceability	Non-replaceable
DIN 18032-3 certification	-	Controlgear replaceability	Non-replaceable
IPEA	Green Areas B	Driver Box	Built-in
Insulation class	I	Maximum surface exposed to the wind	-
IP degree	IP65	-	-
Mechanical resistance	IK08	-	-
Glow Wire Test	750 °C	-	-

DIMENSIONAL



PHOTOMETRIC DISTRIBUTION



TECHNICAL SYMBOLOGY



IP
IP65

IK
IK08

GWT
750 °C

Product Data Sheet
GWF2110FR840

ELIA OL

STANDARDS/APPROVALS

