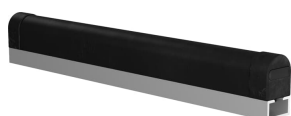


PRODUCT-DETAILS

TT 25-30 TPE

TT 25-30 TPE Safety edge



Informations générales

| | |
|------------------------------|---|
| Extension du type de produit | TT 25-30 TPE |
| Code de produit | 2TLA076025R3010 |
| EAN | 7350024484274 |
| Description courte | TT 25-30 TPE Safety edge |
| Description longue | <p>TT safety edge rubber part (TPE), 25mm wide x 30mm high. Aluminium rail (14 mm high) is included. The rail will be split in two separate pieces if the length is over 5meter.</p> <p>Ordered by meter: order 0,73m for a 0,73m long safety edge. Max length 25m. Customization with right cable length must be ordered separately.</p> |

Commande

| | |
|-------------------------------|--|
| Quantité minimum | 0.14 m |
| Quantité de commande maximale | 25 m |
| Code douanier | 8536508099 |
| Groupe de produit | TT |
| Type de produit | Safety edge |
| Fonction | Safety edge to prevent crushing injuries |
| Sub-Function | Aluminium rail included |

Popular Downloads

| | |
|--|-----------------|
| Fiche produit, informations techniques | 2TLC010046M0201 |
| Instructions et manuels | 2TLC010046M0201 |
| CAD Dimensional Drawing | 2CDC001079B0201 |

Dimensions

| | |
|----------------------|----------|
| Produit Longueur Net | 1000 mm |
| Produit Hauteur Net | 30 mm |
| Produit Largeur Net | 25 mm |
| Poids net | 0.746 kg |

Safety Information

| | |
|-------------------------|-------------------|
| Agence de certification | TÜV Nord cURus |
| Safety Category | 4 |
| Performance Level (PL) | Up to d |

Technique

| | |
|----------------------------|--------------|
| Couleur | Black |
| Maximum Control Current DC | 10 mA |
| Overtravel | 15 mm |
| Tension | 24 V DC |
| Durée de vie | 10000 cycles |

Environnement

| | |
|------------------------------|-----------------------------------|
| Température de l'air ambiant | Operation -10 ... +70 °C |
| Indice de protection | IP65 |
| Matériau | Rubber: TPE Profile: Aluminium |

Certificats et Déclarations (Numéro de document)

| | |
|----------------------------------|------------------------------------|
| CQC Certificate | No certification needed |
| Declaration of Conformity - CCC | No declaration needed |
| Déclaration de Conformité - CE | 2TLC010032D0201 2TLC010035D0201 |
| Declaration of Conformity - UKCA | 2TLC010179D0201 2TLC010178D0201 |
| Certificat TÜV | 2TLC010027D0201 2TLC010028D0201 |

Emballage

| | |
|--------------------------|----------|
| Emballage Niveau 1 Poids | 0.746 kg |
|--------------------------|----------|

Emballage Niveau 1 EAN

7350024484274

Classifications

| | |
|--------------------------------|---|
| eClass | V11.0 : 27273590 |
| ETIM 7 | EC002887 - Pressure sensitive protective device |
| ETIM 8 | EC002887 - Pressure sensitive protective device |
| ETIM 9 | EC002887 - Pressure sensitive protective device |
| Code de classification d'objet | B |
| E-Number (Sweden) | 3832493 |

Catégories

Produits basse tension → Produits de Contrôle, Protection et sécurité machines → Produits pour la sécurité → Bordures sensibles

