

## PRODUCT DATASHEET

### HQI-TS 400 W/D

POWERSTAR HQI®-TS | Metal halide lamps with quartz technology for enclosed luminaires



#### Areas of application

- Foyers, reception areas
- Factory and hall lighting with low-cost installations
- Exhibition halls and trade fairs
- Sports halls and multi-purpose halls
- Pedestrian zones, public squares
- Parks and gardens
- Buildings, monuments, bridges
- Approved only for use in enclosed luminaires
- Outdoor applications only in suitable luminaires

#### Product benefits

- High efficiency
- Uniform distribution of light
- Good to excellent color rendering
- Hot restrike capable
- UV values significantly below the maximum permitted thresholds to IEC 61167 thanks to UV filter

#### Product features

- POWERSTAR® quartz technology
- Light colors: warm white (WDL), neutral white (NDL), daylight (D)



## TECHNICAL DATA

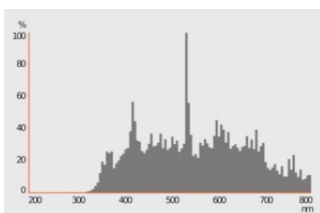
### Electrical data

Nominal wattage	400 W
Construction wattage	420.00 W
Nominal voltage	116 V
Ignition voltage	4.0/25 kVp <sup>1)</sup>
Nominal current	4.1 A
PFC capacitor at 50 Hz	45 µF

<sup>1)</sup> Minimum / Maximum

### Photometrical data

Luminous flux	35000 lm
Luminous efficacy	83 lm/W
Light color (designation)	Daylight
Color temperature	5500 K
Color rendering index Ra	93
Light color	955
Rated LLMF at 2,000 h	0.70
Rated LLMF at 4,000 h	0.60
Rated LLMF at 6,000 h	0.55
Rated LLMF at 8,000 h	0.52
Rated LLMF at 12,000 h	0.50
UV protection	Yes



### Dimensions & Weight

Overall length	205.60 mm
Light center length (LCL)	103,0 mm

Diameter	33,0 mm
Product weight	88.00 g

### Temperatures & operating conditions

Maximum permitted outer bulb temperature	750 °C
Maximum permitted pinch temperature	300 °C

### Lifespan

Lifespan	12000 h
Rated lamp survival factor at 2,000 h	0.80
Rated lamp survival factor at 4,000	0.70
Rated lamp survival factor at 6,000	0.60
Rated lamp survival factor at 8,000 h	0.55
Rated lamp survival factor at 12,000 h	0.50
Lifespan B50	12000 h

### Additional product data

Base (standard designation)	Fc2
Mercury content	26.5 mg
Design / version	Clear
Product remark	With NAV® control gear

### Capabilities

Dimmable	No
Burning position	P45
Enclosed luminaire required	Yes
Hot restart	Yes

### Certificates & Standards

Energy efficiency class	G
Energy consumption	422.00 kWh/1000h

### Country-specific categorizations





ILCOS	MD/UB-400/856-H/E/SL-Fc2-25/162/H
Order reference	HQI-TS 400W/D P

### Energy labelling regulation data acc EU 2019/2015

Lighting technology used	MH
--------------------------	----

Non-directional or directional	NDLS
Mains or non-mains	NMLS
Light source cap-type (or other electric interface)	Fc2
Connected light source (CLS)	No
Color-tuneable light source	No
Envelope	SECOND
High luminance light source	No
Anti-glare shield	No
Correlated colour temperature type	SINGLE_VALUE
Claim of equivalent power	No
Length	205.60 mm
Height	33,0 mm
Width	33,0 mm
Chromaticity coordinate x	0,332
Chromaticity coordinate y	0,336
Beam angle correspondence	SPHERE_360
EPREL ID	666231
Model number	AM42362

**DOWNLOAD DATA**

Documents and certificates	
	User instruction
	Declarations Of Conformity CE
	Certificates
Photometric and lighting design files	
	Spectral power distribution

**LOGISTICAL DATA**

Product code	Packaging unit (Pieces/Unit)	Dimensions (length x width x height)	Gross weight	Volume
4008321689191	Sleeve 1	51 mm x 51 mm x 260 mm	119.00 g	0.68 dm <sup>3</sup>

Product code	Packaging unit (Pieces/Unit)	Dimensions (length x width x height)	Gross weight	Volume
4008321689207	Shipping box 12	216 mm x 166 mm x 272 mm	1464.00 g	9.75 dm <sup>3</sup>

The mentioned product code describes the smallest quantity unit which can be ordered. One shipping unit can contain one or more single products. When placing an order, for the quantity please enter single or multiples of a shipping unit.

---

## DISCLAIMER

Subject to change without notice. Errors and omission excepted. Always make sure to use the most recent release.