

KS 8.10 FL30 CU (318 207)

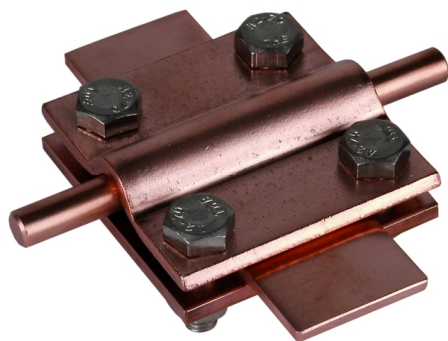
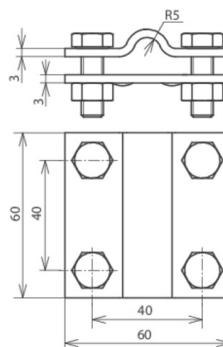


Figure without obligation



Arrangement:

| Type | KS 8.10 FL30 CU |
|---|--------------------------|
| Part No. | 318 207 |
| Material of clamp | Cu |
| Clamping range Rd / FI | 8-10 / 30 mm |
| Clamping range FI / FI | 30 / 30 mm |
| Clamping range (stranded / cable) | 50-70 mm ² |
| Screw | M8 x 25 mm |
| Material of screw / nut | StSt (V4A) |
| Material No. | 1.4571 / 1.4404 / 1.4401 |
| Dimensions | 60 x 60 x 3 mm |
| Lightning current carrying capability (10/350 μs) | ^{*)} |
| Standard | EN 62561-1 |
| Short-circuit current (AC 50 Hz / DC) (1 s; ≤ 300 °C) | 29 kA |
| Weight | 253 g |
| Customs tariff number | 85389099 |
| GTIN | 4013364021488 |
| PU | 1 Stk |

^{*)} See test certificate for exact classification.

We reserve the right to introduce changes in performance, configuration and technology, dimensions, weights and materials in the course of technical progress. The figures are shown without obligation.