

TECHNISCHE DATEN:

Aufbau

| | |
|-----------------------|------------------------------------|
| Druckschraube | Polyamid PA6 |
| Zugentlastungsschelle | Polyamid PA6 |
| Schraube / Mutter | Edelstahl |
| Dichtring | Nitrilkautschuk NBR, ausschneidbar |
| Zwischenstutzen | Polyamid PA66 |
| Sechskantmutter | Polyamid PA6 GF30 |
| Gewinde-Dichtring | Faserverbundwerkstoff |
| Anschlussgewinde | metrisch, nach EN 60423 |

Eigenschaften

- hohe Zugentlastung
- großer Dicht- und Klemmbereich
II 2 G (1,2) II 2 D (21,22)

| | | |
|----------------------|--|----------------|
| Gruppe (Zone) | II 2 G (1,2) | II 2 D (21,22) |
| Kennzeichnung | Ex eb IIC Gb | Ex tb IIIC Db |
| Kabelverlegung | flexibel | |
| Temperaturbereich | -55 °C / +75 °C | |
| Schutzart | IP66 (komplett montierter Zustand) | |
| Prüfnorm | EN IEC 60079-0:2018, IEC 60079-0:2017 EN IEC 60079-7:2015+A1, IEC 60079-7:2017 EN 60079-31:2014, IEC 60079-31:2013 | |
| EG-Prüfbescheinigung | BVS 20 ATEX E 096 | |
| IECEx-Zertifikat | IECEx BVS 20.0077 | |

TECHNICAL DATA:

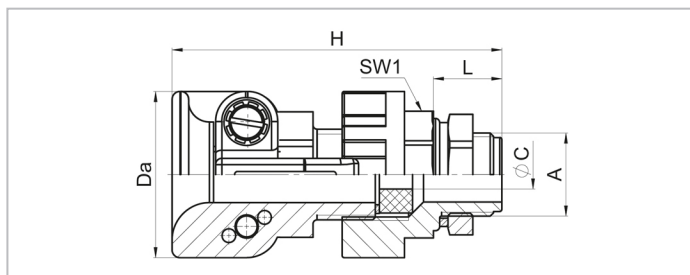
Configuration

| | |
|---------------------|--|
| Pressure screw | Polyamide PA6 |
| Strain relief clamp | Polyamide PA6 |
| Bolt / Nut | Stainless steel |
| Sealing ring | Nitrile rubber NBR, multiple perforation |
| Gland body | Polyamide PA66 |
| Hexagonal locknut | Polyamide PA6 GF30 |
| Thread sealing ring | Fibre composite |
| Connecting thread | metric, as per EN 60423 |

Properties

- increased anchorage
- wide sealing and clamping range
II 2 G (1,2) II 2 D (21,22)

| | | |
|---------------------|--|----------------|
| Group (Zone) | II 2 G (1,2) | II 2 D (21,22) |
| Marking | Ex eb IIC Gb | Ex tb IIIC Db |
| Cable Installation | flexible | |
| Temperature range | -55 °C / +75 °C | |
| Protection grade | IP66 (fully assembled) | |
| Test standard | EN IEC 60079-0:2018, IEC 60079-0:2017 EN IEC 60079-7:2015+A1, IEC 60079-7:2017 EN 60079-31:2014, IEC 60079-31:2013 | |
| EC-Type certificate | BVS 20 ATEX E 096 | |
| IECEx Certificate | IECEx BVS 20.0077 | |





Merkmale

Characteristics

Anschlussgewinde Standardlänge

Connecting thread standard length

| A | ØC mm | L mm | SW1 mm | H mm | Da mm |  |  schwarz black Art.-Nr. / Part No. |
|---------|----------|---------|-----------|---------|----------|---|---|
| M20x1,5 | 8 - 13 | 15 | 27 | 77 | 40 | 10 | GHG9601949R0111 |
| M25x1,5 | 11 - 16 | 15 | 32 | 80 | 43 | 10 | GHG9601949R0112 |
| M32x1,5 | 15 - 20 | 15 | 41 | 92 | 54 | 10 | GHG9601949R0113 |
| M40x1,5 | 19 - 27 | 15 | 50 | 98 | 64 | 10 | GHG9601949R0114 |
| M50x1,5 | 26 - 34 | 16 | 60 | 108 | 73 | 1 | GHG9601949R0115 |
| M63x1,5 | 35 - 46 | 16 | 75 | 119 | 89 | 1 | GHG9601949R0116 |

Hinweis: Sechskantmutter und Gewinde-Dichtring sind lose beigelegt.

Comment: Hexagonal locknut and thread sealing ring are supplied loose.