

cabinet

GEOS-S 5040-22-to

GEOS-S 5040-22-to

cabinet

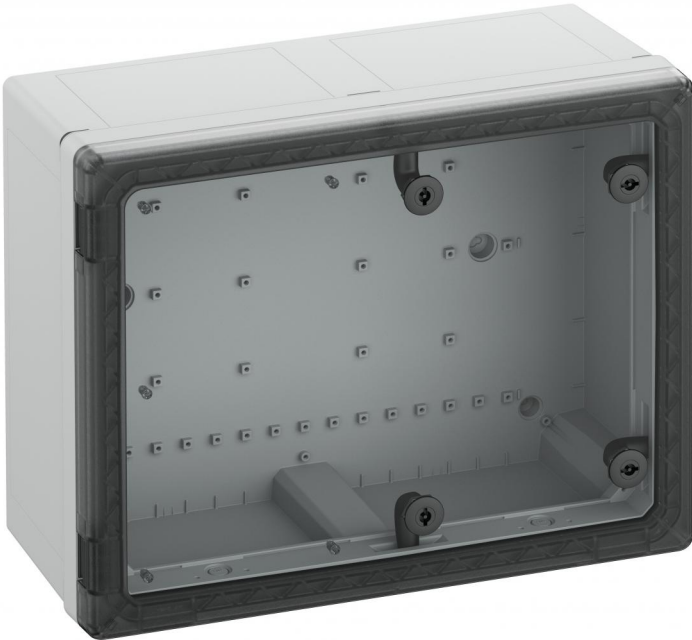
Productnumber: 71175401

Dimensions: 500 x 400 x 226 mm

Cabinet - Industrial Quality, suitable for installation in harsh environments and in exposed outside areas, box and frame: glass-fibre reinforced polycarbonate, grey, similar to RAL 7035, door: Polycarbonate.

Twist lock with 3mm double-bit insert (interchangeable) in accordance to DIN 43668

with transparent door



Technical Data

electrical characteristics

Rated insulation voltage AC:	1000 V
Rated insulation voltage DC:	1500 V
Protection class:	II
Type of protection:	IP66/IP67
vented:	no
UL Type Rating:	4X, 12/12K

Colours

Base unit colour:	grey
Cover colour:	transparent

Dimensions

Width:	500 mm
Length:	400 mm
Height:	226 mm
Inner length:	371 mm
Inner width:	471 mm
Inner height:	204 mm

Material characteristics

suitable for exterior use:	yes
Industry quality:	yes
Halogen free:	yes
Burning behaviour in accordance with UL comparable with 5VA 50/UL 746C:	
Flammability class according with UL94:	V2
Glow-wire flammability according to EN 60695-2-11:	960 °C

mechanical properties

Type of fastening:	Wall mounting
--------------------	---------------

mechanical properties

Impact strength:	IK09
Sealable:	no
Flange variant:	no
Stackable:	no
Stop system:	4-point installation, twist lock
with fastening points in the cover:	yes
Type of top part:	Door
Locking insert:	Double-bit, 3 mm

Ambient conditions

max. relative humidity 25°C:	95 %
max. relative humidity 40°C:	50 %
Min. ambient temperature:	-35 °C
Max. ambient temperature:	80 °C
24h ambient temperature:	60 °C

Material

Base unit material:	Polycarbonate, glass-fibre reinforced
Cover material:	Polycarbonate
Entry material:	not relevant
Sealing material:	Silicone
Cover screw material:	Polyamide, glass-fibre reinforced

Certificates

Test mark:	DNV
Test mark:	DLG (Ammonia resistance)
Test mark:	UL-EU (EN 62208)
Test mark:	UL-EU (EN 61439-1/-2)
Test mark:	UL-EU (EN 61439-1/-3)
Test mark:	UL-EU (EN 61439-1 & EN IEC 61439-7)
Test mark:	UL (UL 50 & CSA 22.2 No. 94.1-15, UL 50E & CSA C22.2 No. 94.2-15)
Test mark:	DNV (Class: Ships and Offshore Installations)

Accessories

- [72000501 - GEOS MPI-4050 - Mounting plate](#)
- [72001501 - GEOS MPS-4050 - Mounting plate](#)
- [72003201 - GEOS NS35-350 - Standard rail](#)
- [72003301 - GEOS NS35-450 - Standard rail](#)
- [72002301 - GEOS MH-22 - Mounting holder](#)
- [72002701 - GEOS MHU-22 - mounting holder set](#)
- [72203501 - GEOS-S TW 40-22 - Partition wall](#)
- [72203601 - GEOS-S TW 50-22 - Partition wall](#)
- [72200701 - GEOS-S IT 5040 - internal door](#)
- [72202701 - GEOS-S EPT 5040 - Installation board door](#)
- [72002001 - GEOS ABL-10 - External fixing lug](#)
- [72002101 - GEOS ABL-40 - External fixing lug](#)
- [72007501 - GEOS ABL-10/ES - External fixing lug](#)
- [72007601 - GEOS ABL-40/ES - External fixing lug](#)
- [72005101 - GEOS MSS-40 - Mast clamp set](#)
- [72005201 - GEOS MSS-50 - Mast clamp set](#)
- [72004001 - SRS 60-90 - Screw clamp set](#)
- [72004101 - SRS 90-150 - Screw clamp set](#)
- [72004201 - SRS 150-210 - Screw clamp set](#)
- [72013201 - GEOS DP-4050 - Design plate](#)
- [72003101 - GEOS NS35-250 - Standard rail](#)
- [72003601 - GEOS NS35/15-250 - Standard rail](#)
- [72003701 - GEOS NS35/15-350 - Standard rail](#)
- [72003901 - GEOS NS35/15-327 - Standard rail](#)
- [72003801 - GEOS NS35/15-450 - Standard rail](#)
- [72008201 - GEOS NS35-300 - Standard rail](#)
- [72008301 - GEOS NS35-400 - Standard rail](#)
- [72006501 - GEOS TGS 4050-2 - carrying frame](#)
- [72007401 - GEOS TGS NS35/15 4050-3 - carrying frame](#)
- [72002501 - GEOS MH-22 NS35/15 - mounting holder set](#)
- [72201501 - GEOS-S EPR 4050/5040 - mounting plate interior frame](#)
- [72204201 - GEOS-S 4050/5040 S - Screw set](#)
- [72204501 - GEOS-S 4050/5040 SV - quick closing](#)

[72205001 - GEOS-S DRS-DB/3 - twist lock set](#)
[72205101 - GEOS-S DRS-DB/5 - twist lock set](#)
[72205201 - GEOS-S DRS-VK/8 - twist lock set](#)
[72205301 - GEOS-S DRS-DK/8 - twist lock set](#)
[72205401 - GEOS-S DRS-KB - twist lock set](#)
[72205501 - GEOS-S DRS-SZ - twist lock set](#)
[72207001 - GEOS-S TFS - door stop](#)
[72206501 - GEOS-S IBS 4050/5040 - Interior lighting set](#)
[72212001 - NT-35-24 - Power supply](#)
[26344001 - BEL Air M40 - Ventilation element set](#)
[19599501 - LFR - Stepped drill](#)
[19540001 - LFR M40 - Hole cutter](#)
[19550001 - LFR M50 - Hole cutter](#)
[19563001 - LFR M63 - Hole cutter](#)
[26041601 - DMS M16 - Double-membrane seals](#)
[26042001 - DMS M20 - Double-membrane seals](#)
[26042501 - DMS M25 - Double-membrane seals](#)
[26043201 - DMS M32 - Double-membrane seals](#)
[26043301 - DMS M32/4 - Double-membrane seals](#)
[26044001 - DMS M40 - Double-membrane seals](#)
[24841201 - KVR M12 LG - Cable gland](#)
[24841601 - KVR M16 LG - Cable gland](#)
[24842001 - KVR M20 LG - Cable gland](#)
[24842501 - KVR M25 LG - Cable gland](#)
[24843201 - KVR M32 LG - Cable gland](#)
[24844001 - KVR M40 LG - Cable gland](#)
[24845001 - KVR M50 LG - Cable gland](#)
[22941201 - KVR M12 LG-MGM - Cable gland](#)
[22941601 - KVR M16 LG-MGM - Cable gland](#)
[22942001 - KVR M20 LG-MGM - Cable gland](#)
[22942501 - KVR M25 LG-MGM - Cable gland](#)
[22943201 - KVR M32 LG-MGM - Cable gland](#)
[22944001 - KVR M40 LG-MGM - Cable gland](#)
[22945001 - KVR M50 LG-MGM - Cable gland](#)

[22746301 - KVR M63-MGM - Cable gland](#)

[26242001 - BST M20 - Ventilation seal](#)