

Product End of Life Instructions

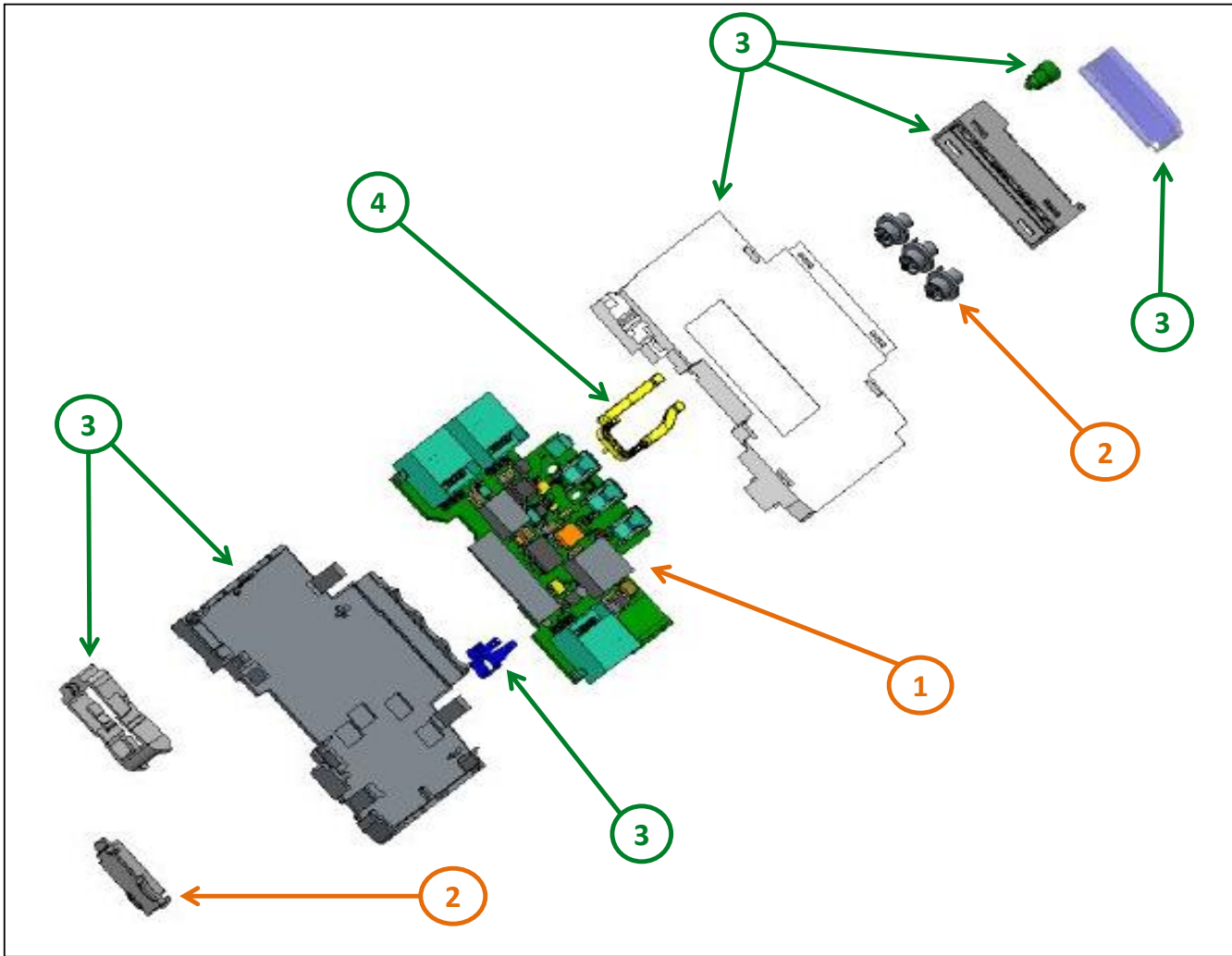
IFM V2 MODBUS COMMUNICATION INTERFACE



 **Potential disassembly risks**

No Risk for the disassembly in terms of electric shock.

 **End of Life Instructions**



Recommendation	Number on drawing	Component / Material	Weight (in g)	Comment
To be depolluted	1	PCBA	39.03 g	
To be depolluted	2	Plastic parts with Brominated FR	2.23 g	
To be dismantled	3	Plastic parts to be dismantled	31.69 g	
To be dismantled	4	Metal parts to be dismantled	0.88 g	

Product description

Manufacturer identification	Schneider Electric Industries SAS
Brand name	Schneider Electric
Product function	IFM V2 is a Gateway to interface MCCBs / ACBs range (ULP to Modbus Serial).
Product reference	LV434000
Total representative product mass in grams	73g, Excluding Accessories
Representative product dimensions	109mm x 73mm x 18mm
Accessories	TRV00217 & LV434211 (Optional). Needed if customer needs more IFM V2s to be stacked
Date of information release	09/2016

Additional information

Legal information	This product family is in the scope of European Union directive 2012/19/EU on Waste Electrical and Electronic Equipment (WEEE). The product family must be disposed according to the legislation of the country. This document is intended for use by end of life recyclers or treatment facilities. It provides the basic information to assure an appropriate end of life treatment for the components and materials of the product.	
Recyclability potential	8%	Based on "ECO'DEEE recyclability and recoverability calculation method" (version V1, 20 Sep. 2008 presented to the French Agency for Environment and Energy Management: ADEME).

Schneider Electric Industries SAS

Country Customer Care Center

<http://www2.schneider-electric.com/sites/corporate/en/support/operations/local-operations/local-operations.page>

35, rue Joseph Monier

CS 30323

F- 92506 Rueil Malmaison Cedex

RCS Nanterre 954 503 439

Capital social 896 313 776 €

www.schneider-electric.com

ENVEOLI1609003_V1

Published by Schneider Electric

© 2016 - Schneider Electric – All rights reserved

09/2016