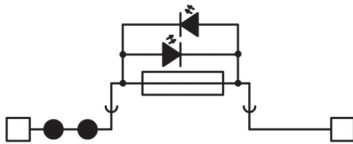
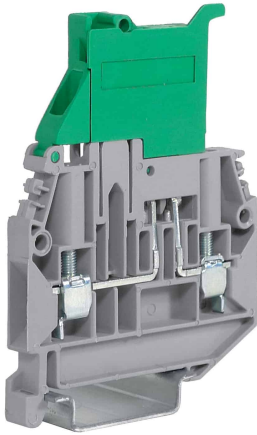
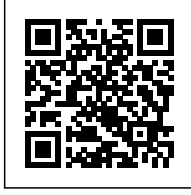


Screw terminal block 4mm²
fuse-holder, blown-fuse signal 12-48V, grey color



Series	SFR – CBF – FPL
Code	CBF448GR
Type	CBF.4/C48/GR
HS code	85369010
Colour	grey
TECHNICAL FEATURES	
Function/Type	Fuse-holder 5x20 with alarm
Rated cross-section	4 mm ²
Connecting capacity	
Flexible wire	0.2-6 mm ²
Rigid wire	0.2-6 mm ²
Wire with ferrule - ferrule type	4 mm ² – WP40/16
Electrical characteristics according to IEC EN standard	
Maximum voltage AC/DC	630 V
Maximum current (rated cross-section)	6.3 A max (20A con CO/5)
Caliber	A4
Electrical characteristics according to UL Standard	
Maximum voltage AC/DC	600 V
Maximum current (rated cross-section)	6.3 A
Section (min-max)	20-12 (AWG)
Tightening torque value (UL)	4.4 lb.in
Electrical characteristics according to ATEX directive and IEC Ex standard	
Rated impulse withstand voltage / pollution degree	6 kV / 3
Insulation stripping length	13 mm
Tightening torque value (nom. / max.)	0.5 / 1 Nm
Width (pitch)	6 mm
Length	57 mm
Height mounted on TH35-7.5/TH35-15/G32	76 / 83 / – mm
Insulation material temperature index (EN 60216-1)	130 °C
Plastic material	Polyamide UL94V-0
ACCESSORIES	
End section	
Grey	CBSF.2-4/PT/GR (cod. CB401GR)
Blue	–
Beige	–
Thickness	1.5 mm
Cross-connection	
Model A)	PTC/4/... (cod. PTC04...)
Model B)	PTP/4/... (cod. PTP04...)
Rated current carrying capacity IEC/ATEX	32 A
Cross-connection identification strip	PTC/SP (cod. PTC0990)
Coloured partition plate	–
Cross-connection barrier	–
Test plug socket	–
Test plug	–
Marking	
Snap-on numbering strip	CNU/8/51 (cod. NU0851S) – CNU/10/61 (cod. NU1061S)
Single marking tag	–
Fuse type	5x20 mm (1)
Conductive element	CO/5 (cod. VL103)
Light alarm circuit (12...48 V)	Already mounted
Light alarm circuit (110...230 V)	–
End bracket	
TH35 screw type	BT/3 (cod. BT003)
TH35 snap-fit type	BTO (cod. BT007)
TH35 and G32 snap-fit type	BTU (cod. BT005)
Mounting rail	
IEC 60715/TH35	PR/3/...
IEC 60715/G32	–
APPROVALS AND MARKINGS	



* Suitable for 5x20 mm fuses* Alarm LED circuit already mounted (12-48 V)* Fuse available separately
1 For more details on accessories, refer to the relevant chapters

DESCRIZIONE DEL PRODOTTO

CBF.4/C48/GR
Screw terminal block 4mm² fuse-holder, blown-fuse signal 12-48V, grey color