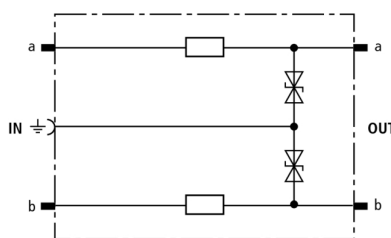


DRL RE 180 (907 425)

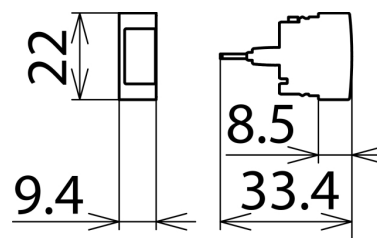
- Low voltage protection level for the protection of terminal equipment
- Energy-coordinated with DRL plug-in SPD block
- For installation in conformity with the lightning protection zone concept at the boundaries from 1 – 2 and higher



Figure without obligation




Basic circuit diagram DRL RE 180



Dimension drawing DRL RE 180

Protective plug (one pair), energy-coordinated with DRL plug-in SPD block, for use as single-stage protective device for terminal equipment with decoupling impedances. Ideally suited for signal circuits with common reference potential. Earthing via EF 10 DRL. For disconnection blocks or DRL plug-in SPD blocks only.

| Type | DRL RE 180 |
|--|---|
| Part No. | 907 425 |
| SPD class |  |
| Nominal voltage (U_N) | 180 V |
| Max. continuous operating voltage (d.c.) (U_C) | 180 V |
| Max. continuous operating voltage (a.c.) (U_C) | 127 V |
| Nominal current (I_N) | 0.1 A |
| D1 Total lightning impulse current (10/350 μ s) in combination with DRL 10 B... (I_{imp}) | 5 kA |
| D1 Lightning impulse current (10/350 μ s) per line in combination with DRL 10 B... (I_{imp}) | 2.5 kA |
| C2 Total nominal discharge current (8/20 μ s) in combination with DRL 10 B... (I_n) | 10 kA |
| C2 Nominal discharge current (8/20 μ s) per line in combination with DRL 10 B... (I_n) | 5 kA |
| C1 Nominal discharge current (8/20 μ s) per line without DRL 10 B... (I_n) | 0.5 kA |
| Voltage protection level line-PG for I_{imp} D1 in combination with DRL 10 B... (U_p) | ≤ 280 V |
| Voltage protection level line-line at 1 kV/ μ s C3 (U_p) | ≤ 500 V |
| Voltage protection level line-PG at 1 kV/ μ s C3 (U_p) | ≤ 270 V |
| Series resistance per line | 4.7 ohms |
| Cut-off frequency line-PG (f_c) | 42 MHz |
| Capacitance line-line (C) | ≤ 50 pF |
| Capacitance line-PG (C) | ≤ 80 pF |
| Operating temperature range (T_U) | -40 °C ... +80 °C |
| Degree of protection | IP 20 (when plugged in) |
| Plugs into | LSA disconnection block 2/10 or DRL 10 B ... plug-in SPD block |
| Earthing via | earthing frame |
| Enclosure material | polyamide PA 6.6 |
| Colour | yellow |
| Test standards | IEC 61643-21 / EN 61643-21 |
| Weight | 3 g |
| Customs tariff number | 85363010 |
| GTIN | 4013364107656 |
| PU | 10 Stk |

We reserve the right to introduce changes in performance, configuration and technology, dimensions, weights and materials in the course of technical progress. The figures are shown without obligation.