


44424030	DATA SHEET	
Valid from: 17.09.2018	EPIC® POWER MODULE MSC-HHC1 / MCB-HHC1	

Description

- The mixed assembly guarantees high flexibility. For applications in mechanical and plant engineering, for printing machines and slide-in technology.
- Very high current transfer
- Crimp connection for permanent vibration proof contact



General Characteristics

Series	POWER Modul
Number of Contacts	1
Termination Methods	Crimp termination: 50.0 – 95.0 mm ²
Temperature Range	-40°C to +125°C

Artikel No.	Module	VPE
44424030	Male	1
44424031	Female	1

Mechanical Characteristics

Cycles of mechanical operation	500
--------------------------------	-----


Electrical Characteristics

Rated Voltage	1000 V
Rated impulse voltage	8 kV
Rated Current	220 A
Pollution Degree	3

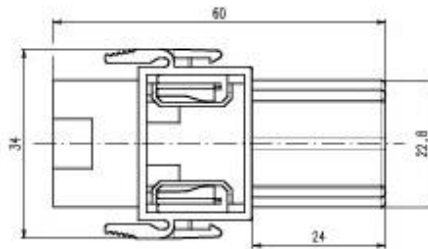
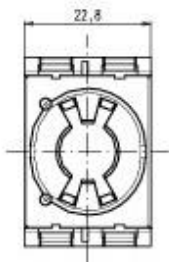
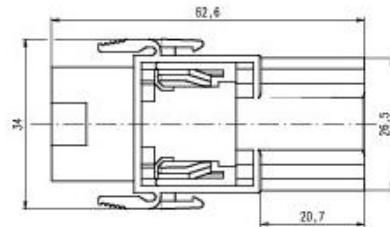
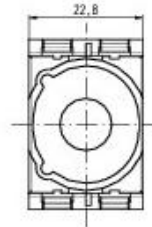
Materials and Surfaces

Module	PA6
Flammability Class according to UL 94	V0

Creator: MANA2/PDP Released: IVSE1/PDP	Document: DB44424030EN Version: 01	Page 1 of 2
---	---------------------------------------	-------------

44424030	DATA SHEET	
Valid from: 17.09.2018	EPIC® POWER MODULE MSC-HHC1 / MCB-HHC1	

Technical Drawing



Automation



Industrial machinery and plant engineering



Wind Energy

Info

Extremely high current for sufficient power reserves
Versatile functions in one connector

Application range

Robotics industry
Renewable energy
Plant engineering
Mechanical engineering

Remark

Due to reduced cross sections at PE contacts of frames, the PE contact has to be additionally protected against short circuits by using a protection circuit offering a sufficiently short breaking time (<0.25s).
Photographs are not to scale and do not represent detailed images of the respective products.

Creator: MANA2/PDP Released: IVSE1/PDP	Document: DB44424030EN Version: 01	Page 2 of 2
---	---------------------------------------	-------------