



CorePro LEDtube InstantFit HF T5



CorePro LEDtube HF 1200mm HE 17.1W 840T5

CorePro LEDtube InstantFit HF T5 is the quick and easy way to replace T5 fluorescent tubes with a fast payback time. Designed with industry leading ballast compatibility, the product is ideal for your everyday lighting jobs. With simply plug-and-play installation, it improves energy efficiency immediately and lasts for longer than conventional T5.

Product data

General Information	
Cap-Base	G5
Nominal lifetime	50,000 hour(s)
Switching Cycle	50,000
Lighting Technology	LED
Flux measurement reference	Sphere
Light Technical	
Color Code	840 [CCT of 4000K]
Beam Angle (Nom)	200 degree(s)
Luminous Flux	2,500 lm
Color Designation	Cool White (CW)
Correlated Color Temperature (Nom)	4000 K
Luminous Efficacy (rated) (Nom)	146 lm/W
Color Consistency	<6
Color rendering index (CRI)	80
LLMF At End Of Nominal Lifetime (Nom)	70 %
Photobiological safety according to EN 62471	RG0

Operating and Electrical	
Input Frequency	30K to 100K Hz
Power Consumption	17.1 W
Lamp Current (Max)	350 mA
Lamp Current (Min)	150 mA
Starting Time (Nom)	0.5 s
Warm-up time to 60% light	0.5 s
Power Factor (Fraction)	0.9
Voltage (Nom)	70-120 V
Ballast Compatibility	HF
LED alternative to fluorescent lamp power	28 W
Inrush current at mains	-
Max. lamp no. on MCB B type 10A - Mains	-
Max. lamp no. on MCB B type 10A – EM ballast without Compensation Capacitor.	-
Max. lamp no. on MCB B type 10A – EM ballast with Compensation Capacitor.	-
Max. lamp no. on MCB B type 16A - Mains	-
Max. lamp no. on MCB B type 16A – EM ballast without Compensation Capacitor.	-

CorePro LEDtube InstantFit HF T5

Max. lamp no. on MCB B type 16A – EM ballast -
with Compensation Capacitor.

Temperature

T-Case Maximum (Nom) 45 °C

Controls and Dimming

Dimmable No

Mechanical and Housing

Bulb Finish Frosted

Bulb Material Glass

Product Length 1,200 mm

Bulb Shape T5

Net Weight (Piece) 0.160 kg

Approval and Application

Energy Efficiency Class D

Energy Saving Product Yes

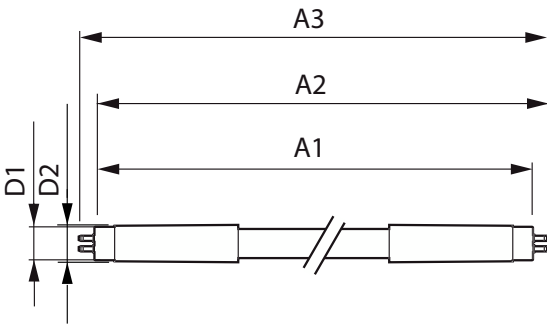
Approval Marks RoHS compliance KEMA Keur
certificate

Energy Consumption kWh/1000 h	18 kWh
EPREL Registration Number	1880099
CE mark	Yes
EU RoHS compliant	Yes
Ambient temperature range	-20 to +45 °C

Product Data

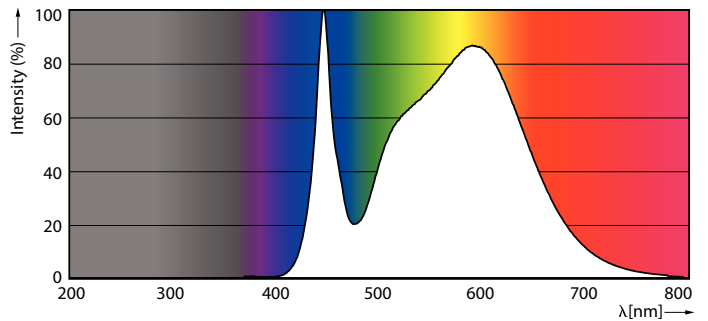
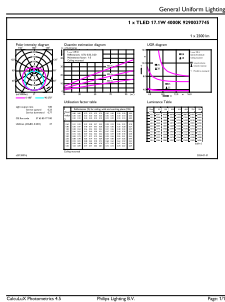
Order product name	CorePro LEDtube HF 1200mm HE 17.1W 840T5
Full product name	CorePro LEDtube HF 1200mm HE 17.1W 840T5
Full product code	872016929548300
Order code	929003774502
Material Nr. (12NC)	929003774502
Numerator - Quantity Per Pack	1
EAN/UPC - Product/Case	8720169295483
Numerator - Packs per outer box	10
EAN/UPC - Case	8720169295490

Dimensional drawing



Product	D1	D2	A1	A2	A3
CorePro LEDtube HF 1200mm HE 17.1W 840T5	15.5 mm	16/19 mm	1,149 mm	1,156 mm	1,163 mm

Photometric data

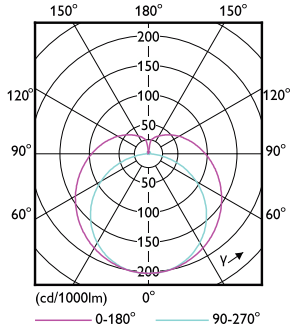


General uniform lighting - CorePro LEDtube HF 1200mm HE 17.1W 840T5

Spectral Power Distribution Colour - CorePro LEDtube HF 1200mm HE 17.1W 840T5

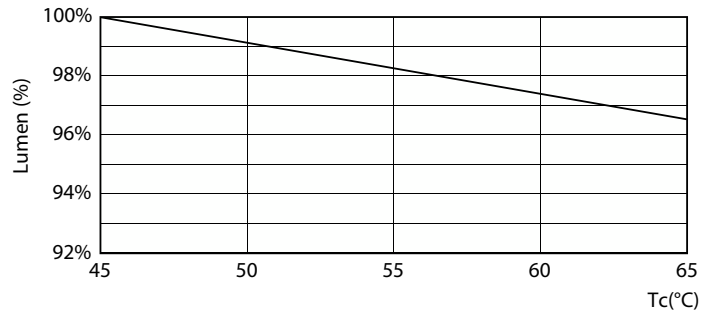
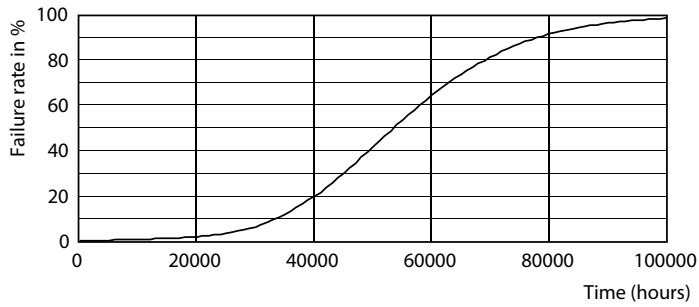
CorePro LEDtube InstantFit HF T5

Photometric data

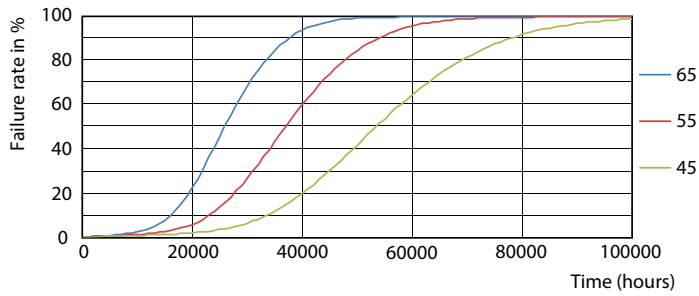


Light Distribution Diagram - CorePro LEDtube HF 1200mm HE 17.1W 840T5

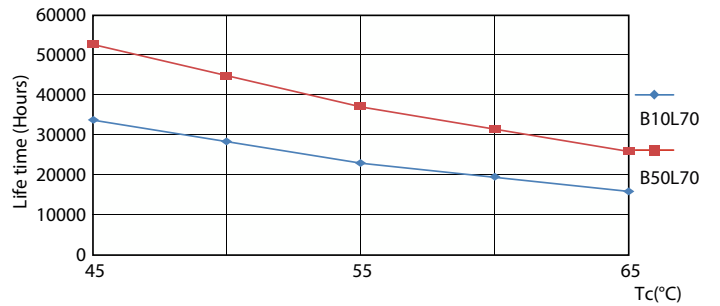
Lifetime



Life Expectancy Diagram



Lumen Maintenance Diagram - CorePro LEDtube HF 1200mm HE 17.1W 840T5

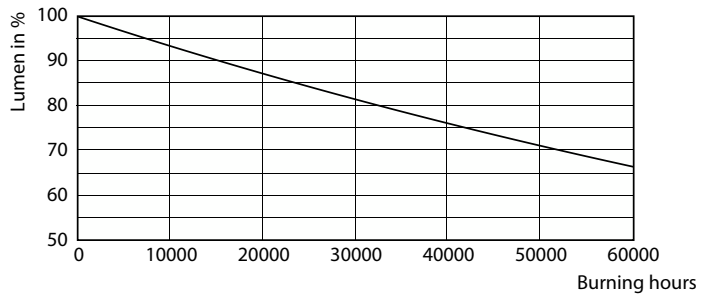


FailureRate

LifetimeVsTc

CorePro LEDtube InstantFit HF T5

Lifetime



Lumen Maintenance Diagram - CorePro LEDtube HF 1200mm HE 17.1W 840T5

