

Product End-of-Life Instructions

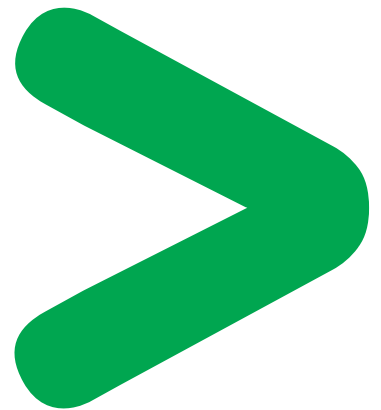
ALTISTART 48 17 – 110 Amps - Standard applications

Product Range

ALTISTART 48 17 – 110 Amps - Standard applications

Marketing Model

ATS48C11Q and all models of Product Family ALTISTART 48 17 – 110 Amps



Size in mm:

W x H x D: 190 x 290 x 235

Weight (excluding packaging) in kg:

8.8



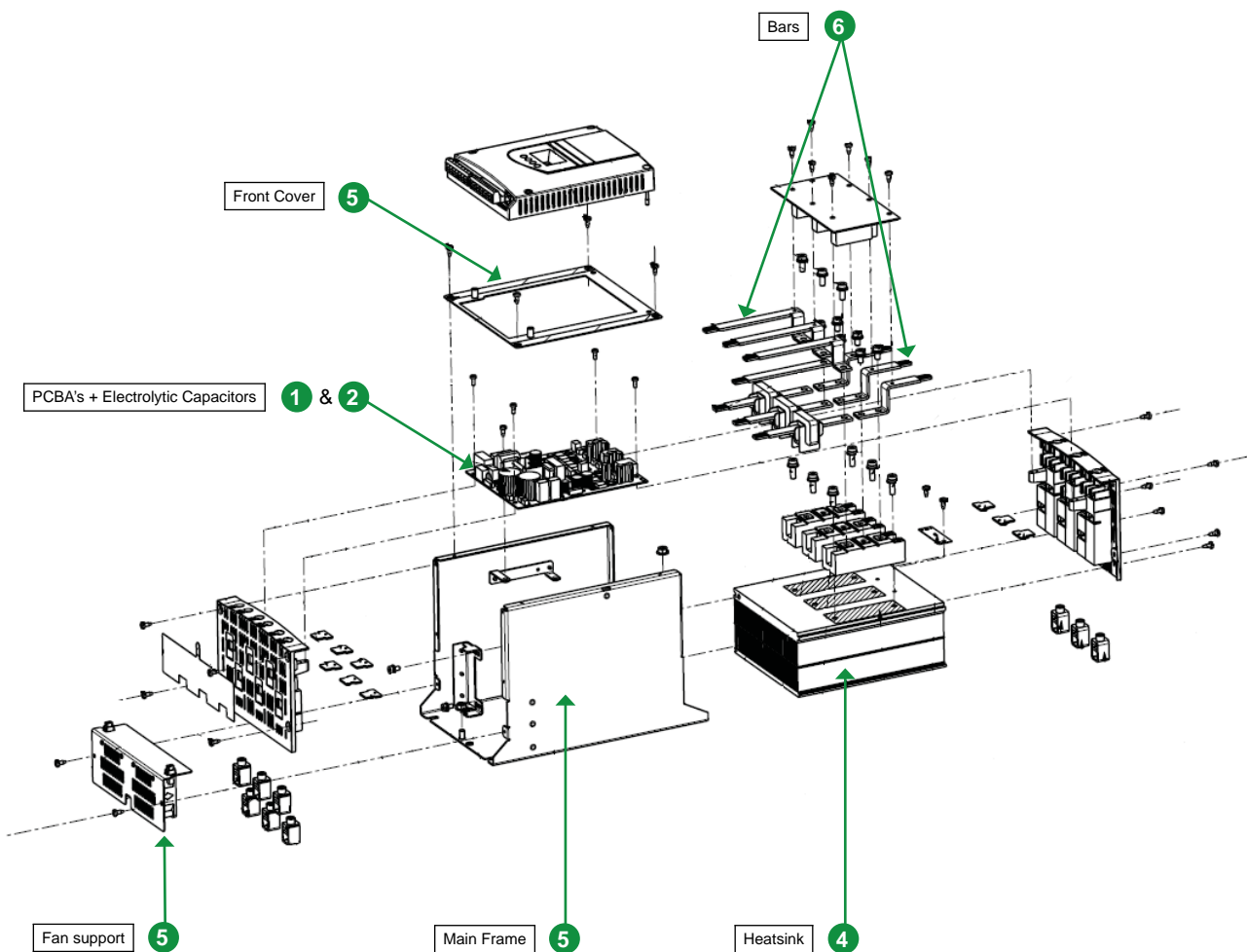
Operations recommended for the end of life treatment

There are several steps to process the products at the end of life so as to recover components, materials or energy:

Reuse ⇒ Depollution ⇒ Dismantling ⇒ Shredding

The components of the products that are recommended to be depolluted (according to the WEEE 2002/96/EC list) or that are recommended to be re-used or dismantled so as to improve the material recovery or that lead to some hazards are listed, identified and located hereunder.

This ATS48C11Q contains electrolytic capacitors which may cause electrical shock during the end of life treatment process. **BEFORE SERVICING, REMOVE ALL POWER, WAIT 15 MINUTES.**



Types of Components	Number on drawing	Components description	Total mass per types (kg)
Components listed for operating hazards	①	Electrolytic capacitors	(weight included in PCBA's)
Components listed for reuse	None	None	None
Components listed for depollution	①	Electrolytic capacitors	(weight included in PCBA's)
	②	Printed Circuit Board Assemblies (PCBA) + Cables and connectors (not shown on drawing)	1.4
Components listed for dismantling operation which improves the recycling performance	③	Plastic parts > PC FR <	None
	④	Aluminium (heatsink)	3.3
	⑤	Steel	2.2
	⑥	Copper	0.5
Other components and parts listed for Shredding operations	⑦	Miscellaneous	1.4

Schneider Electric Industries SAS

35, rue Joseph Monier
CS30323
F - 92506 Rueil Malmaison Cedex

RCS Nanterre 954 503 439
Capital social 896 313 776 €
www.schneider-electric.com

The version of the Guide used to create the document: End of Life Instruction Drafting Guide of Schneider Electric version V1.

Publication : Schneider Electric