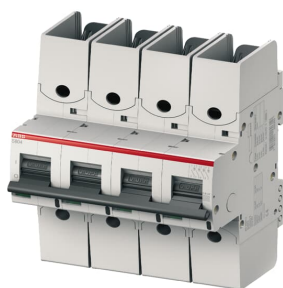


PRODUCT-DETAILS

S804S-B8-R

S804S-B8-R High Performance MCB



General Information

Extended Product Type	S804S-B8-R
Product ID	2CCS864002R0085
EAN	7612271411510
Catalog Description	S804S-B8-R High Performance MCB

Long Description	<p>The S804S-B8-R is a 4-pole High Performance Circuit breaker with B-characteristic, with ring tongue terminal and a rated current of 8 A. It is a current limiting device with a maximum breaking capacity of 50kA at 240/415V. It can be used for voltages up to 400/690V and in DC as well. It has two different tripping mechanisms, the thermal tripping mechanism for overload protection and the electromechanic tripping mechanism for short circuit protection. The S804S-B8-R complies with IEC/EN 60947-2 and allows the use for industrial applications. It has numerous of approvals, therefore it can be used worldwide. The extensive range of accessory makes the use of S804S-B8-R more comfortable. Due to the fast arc extinction of S804S-B8-R your application will be secured.</p>
------------------	---

Technical

Standards	IEC/EN 60947-2, IEC/EN 60898-1, UL 1077
Tripping Characteristic	B
Rated Voltage (U_r)	acc. to IEC 60947-2 690 V AC acc. to IEC 60947-2 500 V DC acc. to IEC 60898-1 400 V AC
Rated Operational Voltage	acc. to IEC 60898-1 400 V

Rated Insulation Voltage (U_i)	acc. to IEC/EN 60664-1 690 V
Rated Impulse Withstand Voltage (U_{imp})	8 kV
Input Voltage Type	AC/DC
Rated Current (I_n)	8 A
Rated Operational Current (I_e)	8 A
Rated Short-Circuit Capacity	(230 V) 25 kA (400 V) 25 kA
Rated Ultimate Short- Circuit Breaking Capacity (I_{cu})	(230 V) 50 kA (400 V) 6 kA
Rated Conditional Short- Circuit Current (I_{nc})	(230 V) 50 kA (400 V) 50 kA
Rated Service Short- Circuit Breaking Capacity (I_{cs})	(240 / 415 V AC) 40 kA (254 / 440 V AC) 22.5 kA (400 / 690 V AC) 4 kA (125 V DC) 30 kA
Frequency (f)	50...60 Hz
Rated Frequency (f)	50/60 Hz
Power Loss	6.8 W at Rated Operating Conditions per Pole 1.7 W
Contact Position Indication	ON / OFF / TRIP
Energy Limiting Class	3
Electrical Endurance	10000 cycle
Mechanical Endurance	10000 cycle
Number of Poles	4
Number of Protected Poles	4
Overvoltage Category	IV
Tightening Torque	3.5 N·m 31 in·lb
Release Type	B
Actuator Marking	I / O
Housing Material	Insulation group I, RAL 7035
Options Provided	Ringlug terminal
Mounting on DIN Rail	TH35-15 (35 x 15 mm Mounting Rail) acc. to IEC 60715 TH35-7.5 (35 x 7.5 mm Mounting Rail) acc. to IEC 60715
Mounting Position	Any
Recommended Screw Driver	Pozidriv 2
Accessories Available	Yes
Remarks	Connection from top and bottom Connecting with CU only IP40 in enclosure with cover Cage terminal with captive screw
Connecting Capacity	Flexible 0 ... 50 mm ² Rigid 0 ... 70 mm ²
Terminal Type	Screw Terminals

Environmental

Ambient Temperature	-25...60 °C
Ambient Air Temperature	Operation -25 ... 60 °C
Reference Ambient Air Temperature	acc. to IEC60947-2 30 °C acc. to EN60898-1 30 °C
Degree of Protection	IP20
Pollution Degree	3
Resistance to Vibrations acc. to IEC 60068-2-6	2 - 13.2 Hz / 1mm 13.2 - 100Hz / 0.7g with load 100% x 1e
RoHS Status	Following EU Directive 2011/65/EU
RoHS Information	9AKK107680A3903 2CCC005083D0202
Environmental Information	2CCY413207D0203
Conflict Minerals Reporting Template (CMRT)	9AKK108468A3363

Technical UL/CSA

Interrupting Rating acc. to UL1077	(480Y / 277 V AC) 14 kA (600Y / 347 V AC) 6 kA
---------------------------------------	---

Dimensions

Width in Number of Modular Spacings	6
Product Net Width	108 mm
Product Net Height	142 mm
Product Net Depth / Length	82.5 mm
Product Net Weight	980 g
Size	4_modules
Built-In Depth (t ₂)	82.5 mm
Dimension Diagram	2CCC413003C0201

Ordering

Minimum Order Quantity	1 piece
Package Level 1 Units	box 1 piece
Package Level 1 Gross Weight	1030 g

Certificates and Declarations

Declaration of Conformity - CE	2CCC005083D0202
-----------------------------------	-----------------

Installation

Instructions and Manuals

2CCC413016M0008

Popular Downloads

Data Sheet, Technical
Information

2CCC413003C0208

Classifications

ETIM 8	EC000042 - Miniature circuit breaker (MCB)
ETIM 9	EC000042 - Miniature circuit breaker (MCB)
WEEE Category	5. Small Equipment (No External Dimension More Than 50 cm)
WEEE B2C / B2B	Business To Business
CN8	85362020
eClass	V11.0 : 27141901
Object Classification Code	F

Categories

Low Voltage Products and Systems → Modular DIN Rail Products → High Performance Circuit Breakers HPCBs → High Performance Circuit Breakers HPCBs

