



MASTER LEDtube InstantFit HF T8



MAS LEDtube HF 600mm HO 8W865 T8

Philips MASTER LEDtube InstantFit T8 integrates a LED light source into a traditional fluorescent form factor. Its unique design creates a perfectly uniform visual appearance which cannot be distinguished from traditional fluorescent. Philips MASTER LEDtube InstantFit T8 is the ideal solution for customers who have higher light requirements and want to maximize value over lifetime. Full energy savings & longer lifetime result in attractive payback times and TCO benefits.

Warnings and Safety

- NOTES: The overall energy efficiency and light distribution of any installation that uses these lamps are determined by the design of the installation.

Product data

General Information	
Cap-Base	G13 ROT
Nominal lifetime	75,000 hour(s)
Switching Cycle	50,000
Lighting Technology	LED
Flux measurement reference	Sphere

Light Technical	
Color Code	865 [CCT of 6500K]
Beam Angle (Nom)	160 degree(s)
Luminous Flux	1,050 lm
Color Designation	Cool Daylight
Correlated Color Temperature (Nom)	6500 K
Luminous Efficacy (rated) (Nom)	131 lm/W
Color Consistency	<6

Color rendering index (CRI)	80
LLMF At End Of Nominal Lifetime (Nom)	70 %
Photobiological safety according to EN 62471	RG0

Operating and Electrical	
Line Frequency	20000-120000 Hz
Input Frequency	20000-120000 Hz
Power Consumption	8 W
Lamp Current (Max)	500 mA
Lamp Current (Min)	150 mA
Starting Time (Nom)	0.5 s
Warm-up time to 60% light	0.5 s
Power Factor (Fraction)	0.9
Voltage (Nom)	20-50 V
Ballast Compatibility	HF

MASTER LEDtube InstantFit HF T8

LED alternative to fluorescent lamp power	18 W
Inrush current at mains	-
Max. lamp no. on MCB B type 10A - Mains	-
Max. lamp no. on MCB B type 10A – EM ballast without Compensation Capacitor.	-
Max. lamp no. on MCB B type 10A – EM ballast with Compensation Capacitor.	-
Max. lamp no. on MCB B type 16A - Mains	-
Max. lamp no. on MCB B type 16A – EM ballast without Compensation Capacitor.	-
Max. lamp no. on MCB B type 16A – EM ballast with Compensation Capacitor.	-

Temperature

T-Case Maximum (Nom)	55 °C
----------------------	-------

Controls and Dimming

Dimmable	No
----------	----

Mechanical and Housing

Bulb Finish	Frosted
Bulb Material	Plastic
Product Length	600 mm
Bulb Shape	T8
Net Weight (Piece)	0.100 kg

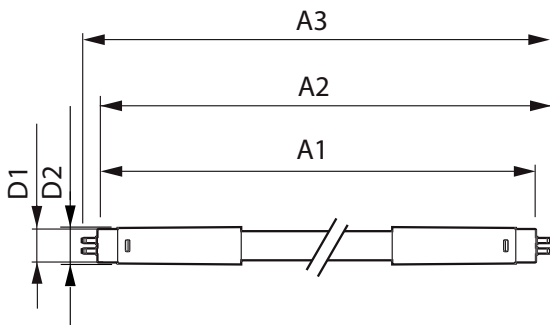
Approval and Application

Energy Efficiency Class	E
Energy Saving Product	Yes
Approval Marks	RoHS compliance CE marking KEMA Keur certificate ENEC certificate
Energy Consumption kWh/1000 h	8 kWh
EPREL Registration Number	1597258
CE mark	Yes
EU RoHS compliant	Yes
Ambient temperature range	-20 °C to 45 °C

Product Data

Order product name	MAS LEDtube HF 600mm HO 8W865 T8
Full product name	MAS LEDtube HF 600mm HO 8W865 T8
Full product code	871951446644900
Order code	929001393332
Material Nr. (12NC)	929001393332
Numerator - Quantity Per Pack	1
EAN/UPC - Product/Case	8719514466449
Numerator - Packs per outer box	20
EAN/UPC - Case	8719514466456

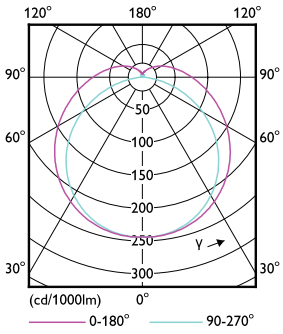
Dimensional drawing



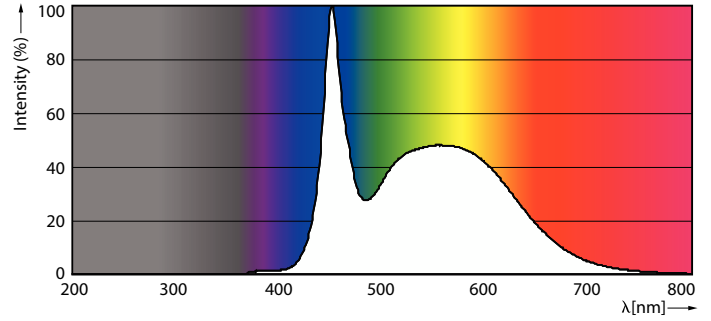
Product	D1	D2	A1	A2	A3
MAS LEDtube HF 600mm HO 8W865 T8	25.8 mm	28 mm	588.6 mm	595.7 mm	602.8 mm

MASTER LEDtube InstantFit HF T8

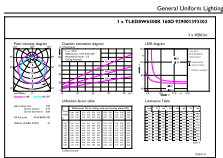
Photometric data



Light Distribution Diagram - MAS LEDtube HF 600mm HO 8W865 T8



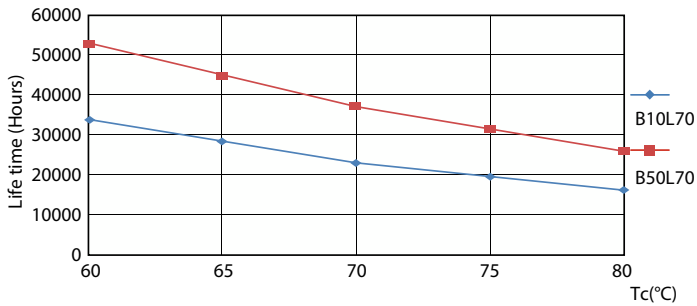
Spectral Power Distribution Colour - MAS LEDtube HF 600mm HO 8W865 T8



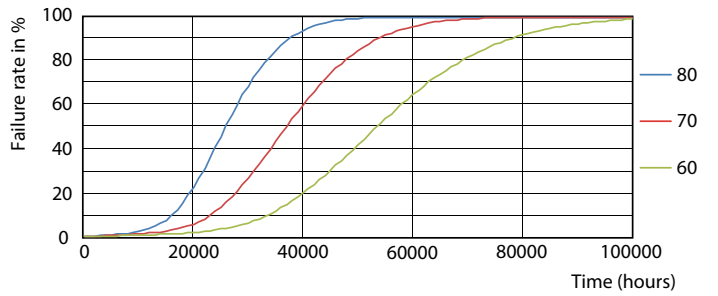
General Uniform Lighting
T8 - FLUORESCENT TUBE DIMENSIONS
Page 11

General uniform lighting - MAS LEDtube HF 600mm HO 8W865 T8

Lifetime



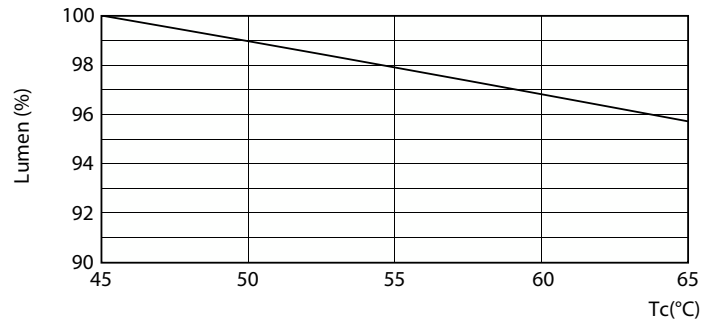
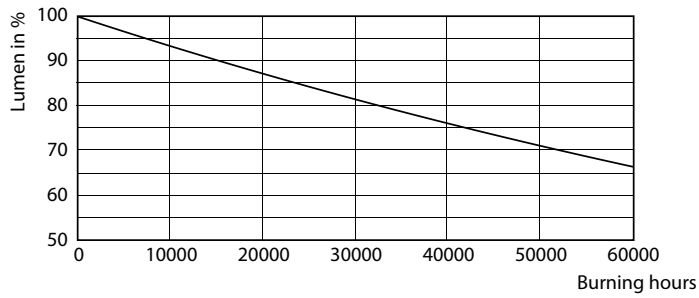
LifetimeVsTc



FailureRate

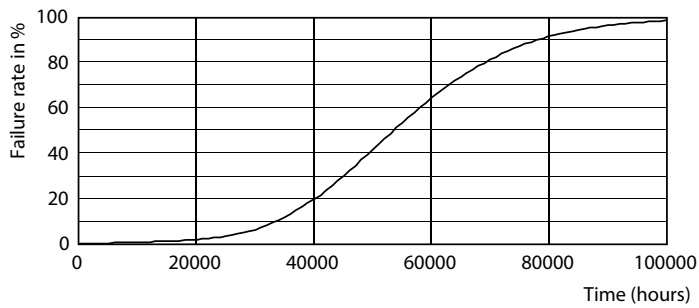
MASTER LEDtube InstantFit HF T8

Lifetime



Lumen Maintenance Diagram - MAS LEDtube HF 600mm HO 8W865 T8

Lumen Maintenance Diagram - MAS LEDtube HF 600mm HO 8W865 T8



Life Expectancy Diagram

