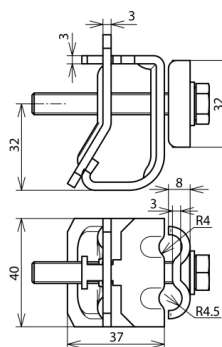


DRK DUL 8.10 W16.22 EST AL (339 111)



Figure without obligation



Arrangement:

Type	DRK DUL 8.10 W16.22 EST AL
Part No.	339 111
Clamping range bead	16-22 mm
Material of clamp	Al
Clamping range Rd	8-10 mm
Material of cleat	StSt
Width	40 mm
Screw	⚙ M8 x 60 mm
Material of screw	StSt
Lightning current carrying capability (10/350 μs)	50 kA ^{*)}
Standard	EN 62561-1
Weight	92 g
Customs tariff number	85389099
GTIN	4013364092129
PU	25 Stk

^{*)} See test certificate for exact classification.

We reserve the right to introduce changes in performance, configuration and technology, dimensions, weights and materials in the course of technical progress. The figures are shown without obligation.