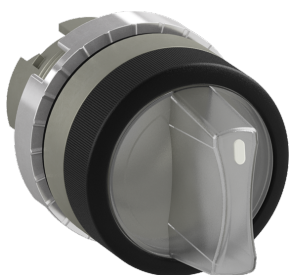


PRODUCT-DETAILS

P9MSLZ5I

P9MSLZ5I Selector Switch



General Information

Extended Product Type	P9MSLZ5I
Product ID	1SFA184628R9108
EAN	7320500522363
Catalog Description	P9MSLZ5I Selector Switch
Long Description	<p>The P9MSLZ5I Selector Switch is: Modular metal - Selector Switch - 3-position - Maintained/Momentary - Short handle - Clear - Illuminated - Satin Chrome Metal</p> <p>This Selector Switch is part of ABB's modular metal range designed for mining, construction and heavy industry applications, combining the highest reliability with the full flexibility of a modular range.</p>

Ordering

Minimum Order Quantity	10 piece
Customs Tariff Number	8536501990

Popular Downloads

Data Sheet, Technical Information	1SFC151007C02__
Instructions and Manuals	1SFC151011M0201

Dimensions

Product Net Width	29.7 mm
Product Net Height	44.5 mm
Product Net Depth / Length	80.7 mm
Product Net Weight	0.06 kg

Technical

Ambient Air Temperature	Operation -30 ... 70 °C Storage -40 ... +70 °C
Color	Clear
Actuator Type	Short handle
Bezel Material	Satin Chrome Metal
Illumination	Illuminated
Function	Maintained/Momentary
Sub-Function	3-position
Sub-Function 2	CAM Z
Maintained Positions	A, B
Spring Return From	C to B
Degree of Protection	Front IP66
Enclosure Type NEMA	Type1 Type12 Type13 Type3 Type3R Type3S Type4 Type4X

Environmental

RoHS Status	Following EU Directive 2011/65/EU and Amendment 2015/863 July 22, 2019
RoHS Information	2CMT2019-005862
WEEE Category	5. Small Equipment (No External Dimension More Than 50 cm)
WEEE B2C / B2B	Business To Business

Certificates and Declarations

BV Certificate	2CMT2019-005867
CB Certificate	2CMT2019-005872
CSA Certificate	2CMT2019-005868
cULus Certificate	2CMT2019-005868
Declaration of Conformity - CE	2CMT2019-005862
Declaration of Conformity - UKCA	2CMT2020-006121
DNV GL Certificate	2CMT2019-005876
RINA Certificate	2CMT2019-005866
UL Certificate	2CMT2019-005868

Container Information

Package Level 1 Units	box 1 piece
Package Level 1 Width	41 mm
Package Level 1 Depth /	80 mm

Length

Package Level 1 Height	41 mm
Package Level 1 Gross Weight	0.06 kg
Package Level 1 EAN	7320500522363

Classifications

ETIM 7	EC000222 - Front element for selector switch
ETIM 8	EC000222 - Front element for selector switch
eClass	V11.0 : 27371213
UNSPSC	39122217
IDEA Granular Category Code (IGCC)	5215 >> Selector Switch Complete Assemblies
E-Number (Finland)	2314778

Categories

Low Voltage Products and Systems → Control Products → Pilot Devices → Modular Metal Range P9M → P9M Selector Switches

