


55510600	DATA SHEET	
Valid from: 03.07.2018	SILVYN® LTPS-M	

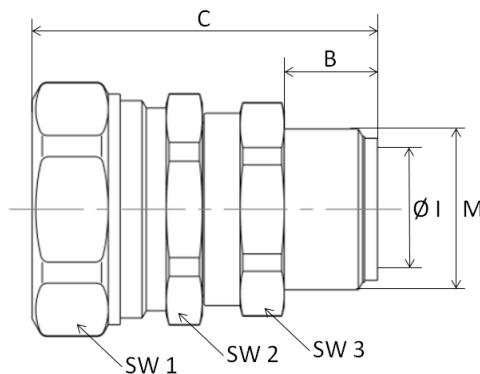
SILVYN® LTPS-M is an elbow Brass-Conduit gland with polyamide sealing for swivel applications. The gland can be used due to his properties in mechanical demanding environments.



- Material:** Gland – Brass, Nickel plated
Seal – PA
- Features:** High tensile strength
Oil resistant
Corrosion resistant
Halogen, Sulphur and Phosphorous free
Vibration and shock resistant
- Temperature range:** -50°C up to +135°C

Norm Reference:  
DIN EN 61386

Protection class: IP66, IP67, IP68 (5bar) and IP69K



Dimension table:

Part No.	Description	NW	Thread M	Inner Diameter Ø I mm	Thread length B mm	Length C mm	SW 1	SW 2	SW 3
5551 0600	SILVYN® LTPS-M 16x1,5/1	12	M16x1,5	8,6	10,0	39,0	22	20	20
5551 0610	SILVYN® LTPS-M 16x1,5/2	16	M16x1,5	10,7	10,0	40,9	26	24	24
5551 0620	SILVYN® LTPS-M 20x1,5/1	16	M20x1,5	10,7	10,0	41,0	26	24	24
5551 0630	SILVYN® LTPS-M 20x1,5/2	20	M20x1,5	14,5	10,0	41,8	29	26	26
5551 0640	SILVYN® LTPS-M 25x1,5	25	M25x1,5	18,0	12,0	50,7	35	33	29
5551 0650	SILVYN® LTPS-M 32x1,5	32	M32x1,5	24,6	13,0	56,9	42	40	38

Suitable Conduit: SILVYN® LTP

Accessories: SKINDICHT® FLACHDICHTUNG

For more information please see our current catalogue. Please do not hesitate to contact our laboratory if there are any questions regarding resistance against aggressive agents and special oil.

Creator: M. Wegerer /PDP Released: DAMU1/PDP	Document: DB55510600EN Version: 02	Page 1 of 1
---	---------------------------------------	-------------