



MASTER LEDtube Mains T5

MAS LEDtube 1200mm HO 26W 830 T5

The new Philips Master LEDtube Mains T5 brings simplicity to your lighting project. You don't need to pay attention to the driver technology anymore. Thanks to a unique design, Philips MASTER LEDtube Mains T5 installs in luminaires operating on mains power connection. So simple to operate! . Perfectly safe, reliable & easy to install Philips MASTER LEDtube Mains T5 is the ideal alternative to standard fluorescent tubes to maximize value over lifetime with high energy saving and lower maintenance costs.

Product data

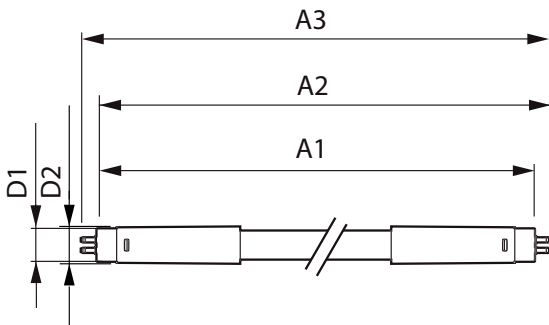
| General Information | | Operating and Electrical | |
|---------------------------------------|--------------------|---------------------------|-----------------|
| Cap-Base | G5 [G5] | Line Frequency | 50 to 60 Hz |
| Nominal lifetime | 50,000 hour(s) | Input Frequency | 50 to 60 Hz |
| Switching Cycle | 200,000 | Power Consumption | 26 W |
| Lighting Technology | LED | Lamp Current (Nom) | 125 mA |
| Flux measurement reference | Sphere | Starting Time (Nom) | 0.5 s |
| | | Warm-up time to 60% light | 0.5 s |
| | | Power Factor (Fraction) | 0.92 |
| | | Voltage (Nom) | 220-240 V |
| Light Technical | | Temperature | |
| Color Code | 830 [CCT of 3000K] | Ambient temperature range | -20 °C to 45 °C |
| Beam Angle (Nom) | 200 degree(s) | T-Case Maximum (Nom) | 70 °C |
| Luminous Flux | 3,600 lumen | | |
| Color Designation | White (WH) | Controls and Dimming | |
| Correlated Color Temperature (Nom) | 3000 K | Dimmable | No |
| Luminous Efficacy (rated) (Nom) | 138.00 lm/W | | |
| Color Consistency | <6 | | |
| Color rendering index (CRI) | 80 | | |
| LLMF At End Of Nominal Lifetime (Nom) | 70 % | | |

MASTER LEDtube Mains T5

| Mechanical and Housing | |
|-------------------------------|--|
| Bulb Finish | Frosted |
| Bulb Material | Glass |
| Product Length | 1,200 mm |
| Bulb Shape | Tube, double-ended |
| Approval and Application | |
| Energy Saving Product | Yes |
| Approval Marks | RoHS compliance CE marking KEMA Keur certificate |
| Energy Consumption kWh/1000 h | 26 kWh |
| EPREL Registration Number | 652.790 |
| CE mark | Yes |

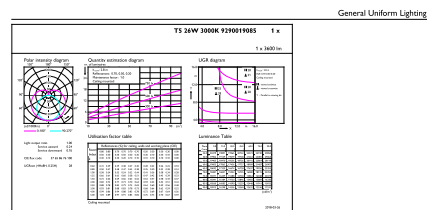
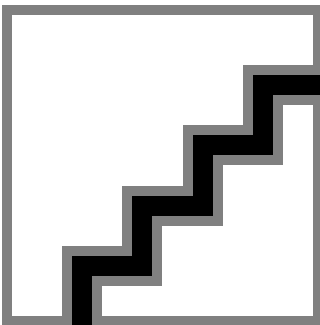
| EU RoHS compliant | Yes |
|---------------------------------|----------------------------------|
| Product Data | |
| Full product code | 871869681921000 |
| Order product name | MAS LEDtube 1200mm HO 26W 830 T5 |
| Order code | 929001908502 |
| Numerator - Quantity Per Pack | 1 |
| Numerator - Packs per outer box | 10 |
| Material number (12NC) | 929001908502 |
| Full product name | MAS LEDtube 1200mm HO 26W 830 T5 |
| EAN/UPC - Case | 8718696819227 |

Dimensional drawing



| Product | D1 | D2 | A1 | A2 | A3 |
|----------------------------------|-------|---------|----------|------------|------------|
| MAS LEDtube 1200mm HO 26W 830 T5 | 15 mm | 16.9 mm | 1,149 mm | 1,156.1 mm | 1,163.2 mm |

Photometric data

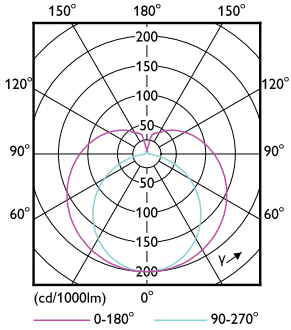


General Uniform Lighting
Circulux Photonics 4.5 Philips Lighting B.V. Page 11

Spectral Power Distribution Colour - MAS LEDtube 1200mm HO 26W 830 T5

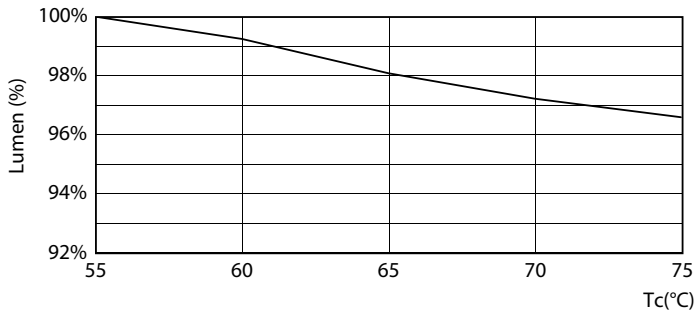
MASTER LEDtube Mains T5

Photometric data

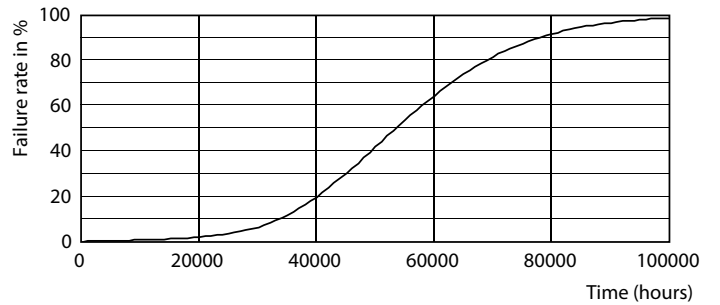


Light Distribution Diagram - MAS LEDtube 1200mm HO 26W 830 T5

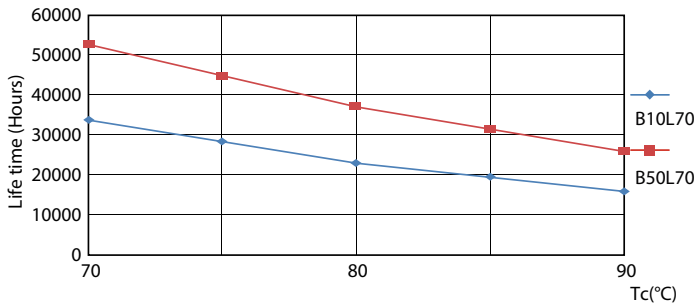
Lifetime



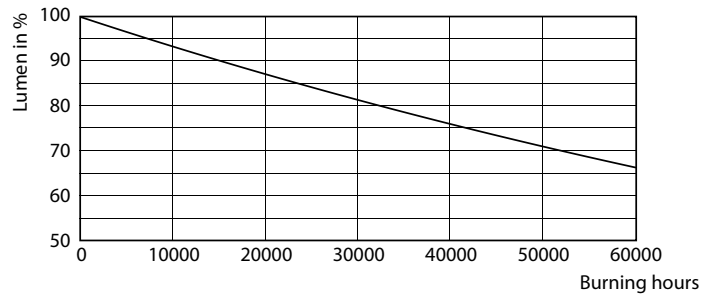
Lumen Maintenance Diagram - MAS LEDtube 1200mm HO 26W 830 T5



Life Expectancy Diagram - MAS LEDtube 1200mm HO 26W 830 T5



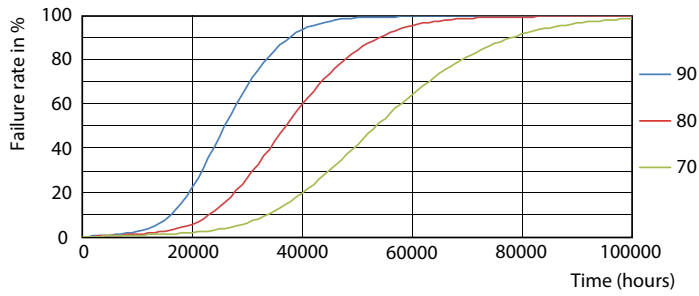
Life Expectancy Diagram - MAS LEDtube 1200mm HO 26W 830 T5



Lumen Maintenance Diagram - MAS LEDtube 1200mm HO 26W 830 T5

MASTER LEDtube Mains T5

Lifetime



Life Expectancy Diagram - MAS LEDtube 1200mm HO 26W 830 T5

