



MASTER LEDtube Mains T5



MAS LEDtube 900mm HE 11.5W 840 T5 EU

The new Philips Master LEDtube Mains T5 brings simplicity to your lighting project. You don't need to pay attention to the driver technology anymore. Thanks to a unique design, Philips MASTER LEDtube Mains T5 installs in luminaires operating on mains power connection. So simple to operate! . Perfectly safe, reliable & easy to install Philips MASTER LEDtube Mains T5 is the ideal alternative to standard fluorescent tubes to maximize value over lifetime with high energy saving and lower maintenance costs.

Product data

General Information		Photobiological safety according to EN 62471	
Cap-Base	G5	RG0	
Nominal lifetime	50,000 hour(s)	Operating and Electrical	
Switching Cycle	200,000	Line Frequency	50 to 60 Hz
Lighting Technology	LED	Input Frequency	50 to 60 Hz
Flux measurement reference	Sphere	Power Consumption	11.5 W
Light Technical		Lamp Current (Max)	57 mA
Color Code	840 [CCT of 4000K]	Lamp Current (Min)	57 mA
Beam Angle (Nom)	200 degree(s)	Starting Time (Nom)	0.5 s
Luminous Flux	1,700 lm	Warm-up time to 60% light	0.5 s
Color Designation	Cool White (CW)	Power Factor (Fraction)	0.9
Correlated Color Temperature (Nom)	4000 K	Voltage (Nom)	220-240 V
Luminous Efficacy (rated) (Nom)	147 lm/W	Ballast Compatibility	Mains
Color Consistency	<6	LED alternative to fluorescent lamp power	21 W
Color rendering index (CRI)	80	Inrush current at mains	7
LLMF At End Of Nominal Lifetime (Nom)	70 %	Max. lamp no. on MCB B type 10A - Mains	110
		Max. lamp no. on MCB B type 10A – EM ballast without Compensation Capacitor.	-

MASTER LEDtube Mains T5

Max. lamp no. on MCB B type 10A – EM ballast with Compensation Capacitor.	-
Max. lamp no. on MCB B type 16A – Mains	175
Max. lamp no. on MCB B type 16A – EM ballast without Compensation Capacitor.	-
Max. lamp no. on MCB B type 16A – EM ballast with Compensation Capacitor.	-

Temperature

T-Case Maximum (Nom)	45 °C
----------------------	-------

Controls and Dimming

Dimmable	No
----------	----

Mechanical and Housing

Bulb Finish	Frosted
Bulb Material	Glass
Product Length	900 mm
Bulb Shape	T5
Net Weight (Piece)	0.112 kg

Approval and Application

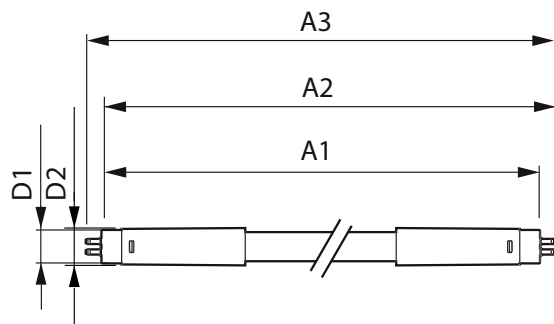
Energy Efficiency Class	D
Energy Saving Product	Yes

Approval Marks	RoHS compliance
Energy Consumption kWh/1000 h	12 kWh
EPREL Registration Number	1587456
CE mark	Yes
EU RoHS compliant	Yes
Flickering value (PstLM) – Flickering value as per EN 61000-3-3	1
Stroboscopic effect visibility measure (SVM)	0.4
Ambient temperature range	-20 to +45 °C

Product Data

Order product name	MAS LEDtube 900mm HE 11.5W 840 T5 EU
Full product name	MAS LEDtube 900mm HE 11.5W 840 T5 EU
Full product code	872016927064000
Order code	929003734102
Material Nr. (12NC)	929003734102
Numerator - Quantity Per Pack	1
EAN/UPC - Product/Case	8720169270640
Numerator - Packs per outer box	10
EAN/UPC - Case	8720169270657

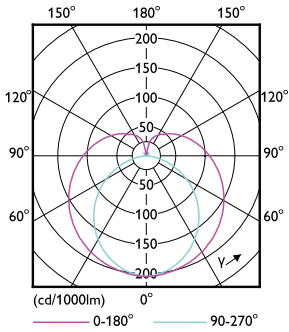
Dimensional drawing



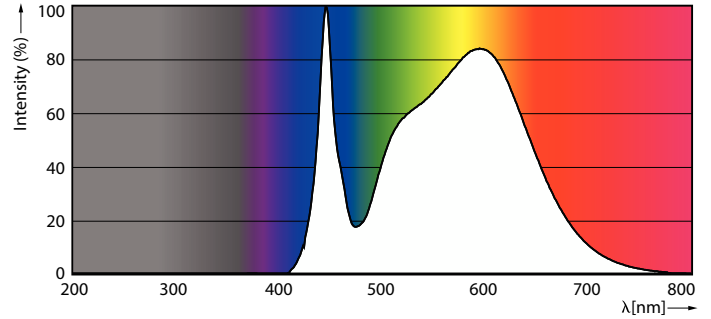
Product	D1	D2	A1	A2	A3
MAS LEDtube 900mm HE 11.5W 840 T5 EU	15.7 mm	19 mm	849 mm	856.1 mm	863.2 mm

MASTER LEDtube Mains T5

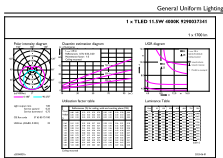
Photometric data



Light Distribution Diagram - MAS LEDtube 900mm HE 11.5W 840 T5 EU



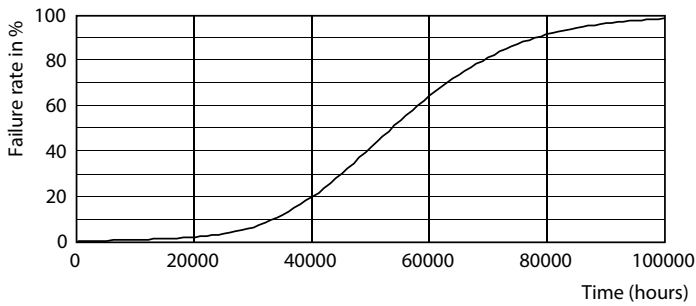
Spectral Power Distribution Colour - MAS LEDtube 900mm HE 11.5W 840 T5 EU



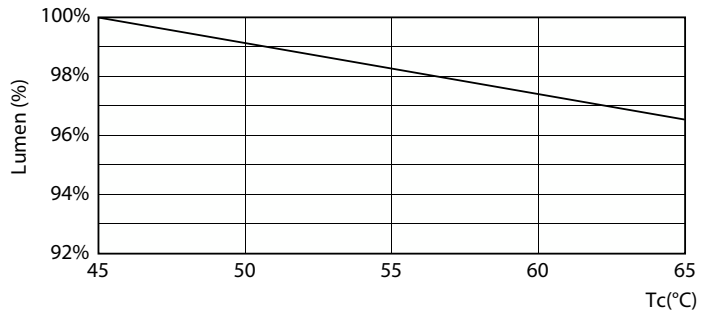
General uniform lighting - MAS LEDtube 900mm HE 11.5W 840 T5 EU

General uniform lighting - MAS LEDtube 900mm HE 11.5W 840 T5 EU

Lifetime



Life Expectancy Diagram



Lumen Maintenance Diagram - MAS LEDtube 900mm HE 11.5W 840 T5 EU

MASTER LEDtube Mains T5

Lifetime



FailureRate

LifetimeVsTc



Lumen Maintenance Diagram - MAS LEDtube 900mm HE 11.5W 840 T5 EU

