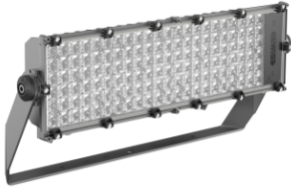


# Product Data Sheet

## GWP3131DN740

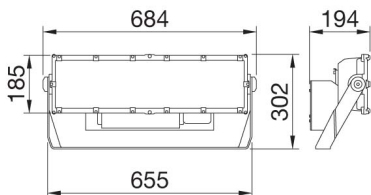
### STADIUM PRO



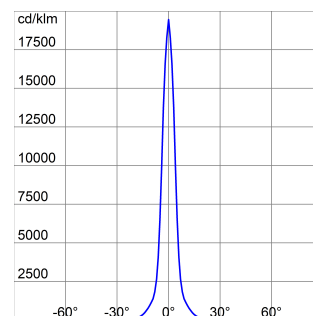
Spatium PRO | 1 is a high-power LED floodlight, with high-emittance LES (light emitted surface), suitable for lighting small or medium-sized sporting facilities. The floodlight has a graphite grey finish with trivalent treatment for maximum resistance to oxidation and is equipped with an integrated 'self-cleaning' heat dissipation system. It consists of 1 module with a bleed and anti-condensation valve, protected from accidental impact. The bracket is made of galvanised steel fixed to the module with screws. The orientation system is enabled by the goniometer integrated into the bracket, which facilitates the pointing phases during installation. The floodlight is available in the following colour temperatures 4,000K or 5,700K and colour rendering CRI>70, CRI>80 or CRI>90 (TLCI>80). In addition, the range offers 6 types of circular optics, from 8° up to 40°, 1 symmetrical/elliptical optic and 2 asymmetric optics. The T.I.R.Ex. optic system developed by GEWISS with lenses in PMMA HT (high-transparency), gives complete control over the light beam, allowing for great flexibility in any project design, with high qualitative and quantitative performance. The floodlight is completed with the power supply unit fixed onto the back of the heat sink. The powers supply unit available in DALI or DMX-RDM versions acan be oriented to optimise the heat dispersion depending on the orientation of the motor. It is protected from surges up to 6KV in differential mode and 10KV in common mode.

GENERAL INFORMATION		OPTIC AND ILLUMINATING FEATURES	
Context	Professional sport lighting	Optic	Circular 8°
Luminaire	High power LED floodlight	Unified Glare Rating	ULOR = 0%
Application	Indoor / Outdoor	Lumen output (lm)	53500
Unique digital code (Datamatrix)	Currently not present	Efficacy (lm/W)	111
Colour	Graphite grey	Colour temperature	4000 K
Type of light source	LED	Colour Rendering Index	CRI70
System power	480 W	Standard Deviation Colour Matching	SDCM = 5
LED Lifetime	L90B10(Tq25°C)=40.000h; L80B10 (Tq25°C)=75.000h	Photobiological Risk Class	-
Weight (kg)	15	Standard	EN60598-1; EN60598-2-5; IEC 62471; IEC 62778
Warranty	5 years	ELETRICAL AND LIGHTING FEATURES	
Stocking temperature	-	Supply voltage	220 - 240 V
Operating temperature	-25 +50 °C	Rated frequency (Hz)	50 / 60
MATERIALS		Driver	Included
Body	Die-cast aluminium	Driver failure rate	F10 = 90.000h Tq25°C
Shield type	Flat tempered glass 4mm	Overvoltage protection	DM 6 kV / CM 10 kV
Optic	T.I.R.Ex. Optical PMMA HT	Control System	DALI
Gasket	Anti-aging silicone	INSTALLATION AND MAINTENANCE	
Locking Hook	-	Mounting and installation	High-mast lighting - Wall mounting - Ground mouting
External screw	Stainless steel	Tilt	Rotation on bracket with integrated goniometer
Colour	Polyester powder coated	Wiring	Watertight connector between floodlight and power supply unit
STANDARDS AND APPROVALS		Fixing	Bracket
Classification	-	Light souce replaceability	By professional
Device with reduced surface temperature	-	Controlgear replaceability	By professional
DIN 18032-3 certification	-	Driver Box	External
IPEA	-	Maximum surface exposed to the wind	0.15 m²
Insulation class	I		
IP degree	IP66		
Mechanical resistance	IK08		
Glow Wire Test	-		

### DIMENSIONAL



### PHOTOMETRIC DISTRIBUTION



# Product Data Sheet

## GWP3131DN740

STADIUM PRO

### TECHNICAL SYMBOLOGY



**IP**  
IP66

**IK**  
IK08

**GWT**  
-

### STANDARDS/APPROVALS

