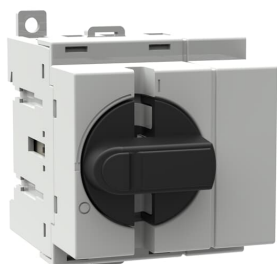


PRODUCT-DETAILS

OT40ML4

OT40ML4 SWITCH-DISCONNECTOR



General Information

Extended Product Type	OT40ML4
Product ID	1SCA022760R8660
EAN	6417019248264
Catalog Description	OT40ML4 SWITCH-DISCONNECTOR
Long Description	4-pole, front operated, base mounted, DIN-rail mountable switch-diconnector with protected clamp terminals, handle and shaft are not included, suitable for distribution board with 45mm slots

Circular Value

Conflict Minerals Reporting Template (CMRT)	9AKK108467A5658
Environmental Information	1SCC301262D0201
REACH Declaration	1SCC011021D0201
RoHS Information	1SCC011020D0201

Ordering

Minimum Order Quantity	1 piece
------------------------	---------

Customs Tariff Number	85365080
Country of Origin	Finland (FI)

Popular Downloads

Data Sheet, Technical Information	1SCC301020C0201
Instructions and Manuals	1SCC301052M0006
Mechanical Drawings	OT16M4.stp

Dimensions

Product Net Width	68 mm
Product Net Height	48 mm
Product Net Depth / Length	73 mm
Product Net Weight	0.125 kg

Technical

Rated Operational Current AC-21A (I_e)	(380 ... 415 V) 40 A (500 V) 40 A (690 V) 40 A
Rated Operational Current AC-22A (I_e)	(380 ... 415 V) 40 A (500 V) 40 A (690 V) 40 A
Rated Operational Current AC-23A (I_e)	(380 ... 415 V) 23 A (500 V) 23 A (690 V) 12 A
Rated Operational Power AC-23A (P_e)	(220 ... 240 V) 5.5 kW (400 ... 415 V) 11 kW (500 V) 11 kW (690 V) 11 kW
Conventional Free-air Thermal Current (I_{th})	$\Theta = 40$ °C 40 A
Conventional Thermal Current (I_{the})	Fully Enclosed 40 A
Rated Impulse Withstand Voltage (U_{imp})	8 kV
Rated Insulation Voltage (U_i)	acc. to IEC/EN 60664-1 750 V
Rated Operational Voltage	Main Circuit 750 V
Rated Short-Circuit Making Capacity (I_{cm})	(690 V) 0.71 kA
Rated Short-time Withstand Current Low Voltage (I_{cw})	for 1 s 0.5 kA
Power Loss	at Rated Operating Conditions per Pole 1.6 W
Pollution Degree	3
Handle Type	Handle and shaft not included
Fourth Pole Position	Right Side

Fourth Pole Type	Switched - Simultaneous Function
Switches Operating Mechanism	Mechanism on Top of the Switch
Distance Between Phases	Standard
Position of Line Terminals	Top In - Bottom Out Bottom In - Top Out
Operating Mode	Front operated
Standards	IEC 60947-3
Special Functions	No
Mounting Type	Base mounting
Number of Poles	4
Cable Cross-Section	Cu 0.75 ... 10 mm ²
Degree of Protection	Front IP20
Terminal Type	Screw Terminals
Tightening Torque	acc. IEC 60947-1 0.8 N·m
Mechanical Durability	20000
Lock Type	No

Technical UL/CSA

Tightening Torque	acc. IEC 60947-1 0.8 N·m
-------------------	--------------------------

Environmental

RoHS Status	Following EU Directive 2011/65/EU and Amendment 2015/863 July 22, 2019
Environmental Information	1SCC301262D0201

Certificates and Declarations

Declaration of Conformity - CE	1SCC301166D2703
REACH Declaration	1SCC011021D0201

Container Information

Package Level 1 Units	box 1 piece
Package Level 1 Width	82 mm
Package Level 1 Depth / Length	103 mm
Package Level 1 Height	86 mm
Package Level 1 Gross Weight	0.14 kg
Package Level 1 EAN	6417019248264

Classifications

Object Classification Code	Q
----------------------------	---

ETIM 7	EC000216 - Switch disconnecter
ETIM 8	EC000216 - Switch disconnecter
ETIM 9	EC000216 - Switch disconnecter (low voltage)
eClass	V11.1 : 27371403
WEEE Category	5. Small Equipment (No External Dimension More Than 50 cm)
E-Number (Finland)	3601204

Categories

Low Voltage Products and Systems → Switches → Switch Disconnectors

