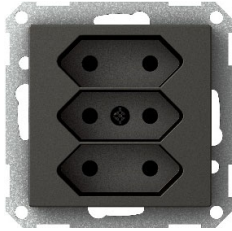


## Déclaration UE de Conformité EU Declaration of Conformity

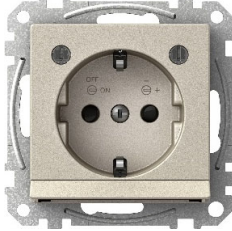
N°/Nr: 1003539-5

**1.0 Identification Produits / Products identification:**

Objet de la déclaration: Installation Prise de courant (Exxact)

Object of the declaration: Installation Socket Outlets (Exxact)

Modèles / Product: voir annexe / see annex



2.0 La présente déclaration de conformité est établie sous la seule responsabilité du fabricant.

Nous, soussignés SCHNEIDER ELECTRIC INDUSTRIES SAS, déclarons par la présente que nos produits catalogués sous marque Schneider Electric, et sous réserve d'installation, d'entretien et d'utilisation conformes à leur destination, à la réglementation, aux normes en vigueur au sein du pays d'installation, aux instructions du constructeur et aux règles de l'art, sont conformes aux exigences essentielles des Directives Européennes suivantes.

L'objet de la déclaration décrit ci-dessus est conforme à la directive 2011/65/UE (et toutes les modifications) du Parlement européen et du Conseil du 8 juin 2011 relative à la limitation de l'utilisation de certaines substances dangereuses dans les équipements électriques et électroniques.

2.0 This declaration of conformity is issued under the sole responsibility of the manufacturer.

We undersigned SCHNEIDER-ELECTRIC INDUSTRIE SAS declare that Schneider Electric branded products, when subject to correct installation, maintenance and use conforming to their intended purpose, according to applicable regulations and standards in the country where they are installed, to the supplier's instructions and to accepted rules of the art comply with Essential Requirements of following European Directives.

The object of the declaration described above is in conformity with Directive 2011/65/EU (and all amendments) of the European Parliament and of the Council of 8 June 2011 on the restriction of the use of certain hazardous substances in electrical and electronic equipment and is also in conformity with the below listed relevant Union harmonisation legislation:

**3.0 Basé sur les normes suivantes / Based on following standards:**

EN IEC 63000:2018

**Des autres spécifications techniques / Other technical specifications:**

IEC 60884-1:2002 ed.3 + A1:2006 + A2:2013

**4.0 Signé par et au nom de /  
Signed for and on behalf of:**

Schneider Electric Industries SAS

**Date et lieu d'établissement / Place and date:**

Shanghai (China), 14.03.2022

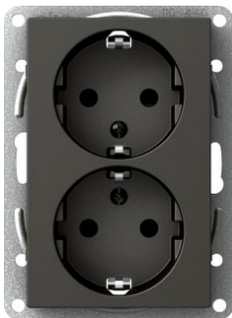
**Signature / Signature:**

DocuSigned by:



3E41653C276F460...

Zoe ZHU

(SVP, Supply Chain & Quality  
Home & Distribution Division)**Nom, Fonction / Name, title:****Schneider Electric Industries SAS****Adresse / Address:**35, rue Joseph Monier,  
92500 Rueil-Malmaison, France<http://www.schneider-electric.com>**Legal information / Mentions légales**

Société par actions simplifiée au capital de 896 313 776 euros

954 503 439 rcs Nanterre – code APE : 2712Z

Siret : 954 503 439 01719

n° ident. TVA : FR 04 954 503 439

Siège social : 35 rue Joseph Monier

F – 92500 Rueil-Malmaison

## Déclaration UE de Conformité EU Declaration of Conformity

N°/Nr: 1003539-5

Annexe / Annex

1/7

Modèles / Product	Objet de la déclaration / Object of the declaration	Assortiment / Range
WDE002076	Socket Outlet 1-gang earthed screwless, white	Exxact
WDE002077	Socket Outlet 1-gang earthed screw, white	Exxact
WDE002078	Socket Outlet 1-gang earthed screwless, with lid, white	Exxact
WDE002087	Socket Outlet 2-gang earthed screw, white	Exxact
WDE002171	Socket Outlet 1-gang unearthed screwless, white	Exxact
WDE002176	Socket Outlet 1-gang earthed screwless, white	Exxact
WDE002177	Socket Outlet 1-gang earthed screwless, with lid, white	Exxact
WDE002178	Socket Outlet 1-gang earthed screw, with lid and key-lock, white	Exxact
WDE002180	Socket Outlet 2-gang, 2-circuits screwless, white	Exxact
WDE002181	Socket Outlet 2-gang unearthed screwless, white	Exxact
WDE002183	Socket Outlet 1x Schuko & 2x Euro screwless, white	Exxact
WDE002184	Socket Outlet 2-gang earthed screwless, white	Exxact
WDE002185	Socket Outlet 2-gang earthed screwless, white	Exxact
WDE002186	Socket Outlet 2-gang earthed screwless, white	Exxact
WDE002187	Socket Outlet 2-gang, 2-circuits earthed screwless, white	Exxact
WDE002188	Socket Outlet 2-gang, 2-circuits screwless, white	Exxact
WDE002189	Socket Outlet 2-gang with earth branching, white	Exxact
WDE002191	Socket Outlet 2-gang unearthed screwless, white	Exxact
WDE002192	Socket Outlet 2-gang earthed screwless, with lid, white	Exxact
WDE002193	Socket Outlet 2-gang earthed screwless, white	Exxact
WDE002196	Socket Outlet 2-gang earthed screwless, white	Exxact
WDE002198	Socket Outlet 2-gang earthed screw, with red LED indication, white	Exxact
WDE002199	Socket Outlet 2-gang earthed screw, with green LED indication, white	Exxact
WDE002267	Socket Outlet 2-gang, 2-circuits earthed screw, white	Exxact
WDE002271	Socket Outlet 1-gang unearthed screw, white	Exxact
WDE002276	Socket Outlet 1-gang earthed screw, white	Exxact
WDE002277	Socket Outlet 1-gang earthed screw, with lid, white	Exxact
WDE002278	Socket Outlet 3-gang earthed screw, white	Exxact
WDE002279	Socket Outlet 3x Euro screw, white	Exxact
WDE002280	Socket Outlet 2-gang, 2-circuits screw, white	Exxact
WDE002281	Socket Outlet 1x Schuko & 2x Euro screw, white	Exxact
WDE002282	Socket Outlet 1x Schuko & 2x Euro 2-circuit screw, white	Exxact
WDE002284	Socket Outlet 2-gang unearthed screw, white	Exxact

### Schneider Electric Industries SAS

Adresse / Address:  
35, rue Joseph Monier,  
92500 Rueil-Malmaison, France

<http://www.schneider-electric.com>

### Legal information / Mentions légales

Société par actions simplifiée au capital de 896 313 776 euros  
954 503 439 rcs Nanterre – code APE : 2712Z  
Siret : 954 503 439 01719  
n° ident. TVA : FR 04 954 503 439  
Siège social : 35 rue Joseph Monier  
F – 92500 Rueil-Malmaison

## Déclaration UE de Conformité EU Declaration of Conformity

N°/Nr: 1003539-5

Annexe / Annex

2/7

Modèles / Product	Objet de la déclaration / Object of the declaration	Assortiment / Range
WDE002285	Socket Outlet 2-gang earthed screw, white	Exxact
WDE002286	Socket Outlet 2-gang earthed screw, white	Exxact
WDE002287	Socket Outlet 2-gang earthed screw, white	Exxact
WDE002288	Socket Outlet 2-gang, 2-circuits screw, white	Exxact
WDE002289	Socket Outlet 2-gang with earth branching, white	Exxact
WDE002290	Socket Outlet 2-gang earthed screw, with lid, white	Exxact
WDE002291	Socket Outlet 2-gang earthed screw, with lid, white	Exxact
WDE002292	Socket Outlet 2-gang earthed screwless, with lid, white	Exxact
WDE002293	Socket Outlet 2-gang earthed screw, with lid and key-lock, white	Exxact
WDE002294	Socket Outlet 2-gang earthed screw, with lid and key-lock, white	Exxact
WDE002295	Socket Outlet 2-gang unearthed screw, white	Exxact
WDE002296	Socket Outlet 2-gang earthed screw, white	Exxact
WDE002328	Socket Outlet 1-gang earthed screw, with spike protection, white	Exxact
WDE002329	Socket Outlet 1-gang earthed screw, with green LED indication, white	Exxact
WDE002330	Socket Outlet 1-gang earthed screw, 45° angled, white	Exxact
WDE002333	Socket Outlet 1-gang earthed screw, with adjustable illumination, white	Exxact
WDE002376	Socket Outlet 1-gang earthed screwless, white	Exxact
WDE002381	Socket Outlet 4x Euro screwless, white	Exxact
WDE002383	Socket Outlet 4x Euro screw, white	Exxact
WDE002385	Socket Outlet 4x Euro 2-circuits screw, white	Exxact
WDE002387	Socket Outlet 2-gang, 2-circuits earthed screwless, white	Exxact
WDE002393	Socket Outlet 2-gang earthed screwless, white	Exxact
WDE002485	Socket Outlet 4-gang unearthed screw, white	Exxact
WDE002486	Socket Outlet 4-gang unearthed screwless, white	Exxact
WDE002487	Socket Outlet 4-gang earthed screw, white	Exxact
WDE002488	Socket Outlet 4-gang earthed screwless, white	Exxact
WDE002489	Socket Outlet 4-gang earthed screwless incl. ladder sheet, white	Exxact
WDE002571	Socket Outlet 1-gang unearthed screwless, white	Exxact
WDE002576	Socket Outlet 1-gang earthed screwless, white	Exxact
WDE002577	Socket Outlet 1-gang earthed screwless, with lid, white	Exxact
WDE002578	Socket Outlet 1-gang earthed screwless, with lid and key-lock, white	Exxact
WDE002580	Socket Outlet 2-gang, 2-circuits screwless, white	Exxact
WDE002581	Socket Outlet 2-gang diagonal unearthed screwless, white	Exxact

### Schneider Electric Industries SAS

Adresse / Address:  
35, rue Joseph Monier,  
92500 Rueil-Malmaison, France

<http://www.schneider-electric.com>

### Legal information / Mentions légales

Société par actions simplifiée au capital de 896 313 776 euros  
954 503 439 rcs Nanterre – code APE : 2712Z  
Siret : 954 503 439 01719  
n° ident. TVA : FR 04 954 503 439  
Siège social : 35 rue Joseph Monier  
F – 92500 Rueil-Malmaison

## Déclaration UE de Conformité EU Declaration of Conformity

N°/Nr: 1003539-5

Annexe / Annex

3/7

Modèles / Product	Objet de la déclaration / Object of the declaration	Assortiment / Range
WDE002583	Socket Outlet 1x Schuko & 2x Euro screwless, white	Exxact
WDE002584	Socket Outlet 2-gang earthed screwless, white	Exxact
WDE002585	Socket Outlet 2-gang earthed screwless, white	Exxact
WDE002586	Socket Outlet 2-gang diagonal earthed screwless, white	Exxact
WDE002587	Socket Outlet 2-gang, 2-circuits earthed screwless, white	Exxact
WDE002588	Socket Outlet 2-gang, 2-circuits screwless, white	Exxact
WDE002589	Socket Outlet 2-gang diagonal earthed screwless, white	Exxact
WDE002590	Socket Outlet 2-gang earthed screwless, white	Exxact
WDE002591	Socket Outlet 2-gang unearthed screwless, white	Exxact
WDE002592	Socket Outlet 2-gang earthed screwless, with lid, white	Exxact
WDE002593	Socket Outlet 2-gang earthed screwless, with lid, white	Exxact
WDE002596	Socket Outlet 2-gang earthed screwless, white	Exxact
WDE002597	Socket Outlet 2-gang earthed screwless, white	Exxact
WDE002598	Socket Outlet 2-gang earthed screwless, with red LED indication, white	Exxact
WDE002599	Socket Outlet 2-gang earthed screwless, white	Exxact
WDE002678	Socket Outlet 3-gang earthed screw, white	Exxact
WDE002679	Socket Outlet 3x Euro screw, white	Exxact
WDE002686	Socket Outlet 2-gang diagonal earthed screw, white	Exxact
WDE002687	Socket Outlet 2-gang diagonal earthed screw, blue	Exxact
WDE002688	Socket Outlet 2-gang diagonal earthed screw, orange	Exxact
WDE002689	Socket Outlet 2-gang diagonal earthed screw, green	Exxact
WDE002690	Socket Outlet 2-gang diagonal earthed screw, red	Exxact
WDE002776	Socket Outlet 1-gang earthed screwless, white	Exxact
WDE002777	Socket Outlet 1-gang earthed screwless, white	Exxact
WDE002786	Socket Outlet 4-gang unearthed screwless, white	Exxact
WDE002788	Socket Outlet 4-gang earthed screwless, white	Exxact
WDE002944	Socket Outlet 1-gang earthed screwless, white	Exxact
WDE002946	Socket Outlet 1-gang earthed screw, white	Exxact
WDE002971	Socket Outlet 2-gang with earth branching screw, white	Exxact
WDE002972	Socket Outlet 2-gang earthed screwless x-terminals, white	Exxact
WDE002973	Socket Outlet 2-gang earthed screw x-terminals, white	Exxact
WDE002976	Socket Outlet 1-gang earthed screwless, white	Exxact
WDE002978	Socket Outlet 1-gang earthed screwless, with lid, white	Exxact

### Schneider Electric Industries SAS

Adresse / Address:  
35, rue Joseph Monier,  
92500 Rueil-Malmaison, France

<http://www.schneider-electric.com>

### Legal information / Mentions légales

Société par actions simplifiée au capital de 896 313 776 euros  
954 503 439 rcs Nanterre – code APE : 2712Z  
Siret : 954 503 439 01719  
n° ident. TVA : FR 04 954 503 439  
Siège social : 35 rue Joseph Monier  
F – 92500 Rueil-Malmaison

## Déclaration UE de Conformité EU Declaration of Conformity

N°/Nr: 1003539-5

Annexe / Annex

4/7

Modèles / Product	Objet de la déclaration / Object of the declaration	Assortiment / Range
WDE002995	Socket Outlet 1-gang earthed screwless, white	Exxact
WDE002996	Socket Outlet 2-gang earthed screwless, white	Exxact
WDE003176	Socket Outlet 1-gang earthed screwless, anthracite	Exxact
WDE003177	Socket Outlet 1-gang earthed screwless, with lid, anthracite	Exxact
WDE003180	Socket Outlet 2-gang, 2-circuits screwless, anthracite	Exxact
WDE003184	Socket Outlet 2-gang earthed screwless, anthracite	Exxact
WDE003185	Socket Outlet 2-gang earthed screwless, anthracite	Exxact
WDE003188	Socket Outlet 2-gang, 2-circuits screwless, anthracite	Exxact
WDE003192	Socket Outlet 2-gang earthed screwless x-terminals, with lid, anthracite	Exxact
WDE003276	Socket Outlet 1-gang earthed screw, anthracite	Exxact
WDE003277	Socket Outlet 1-gang earthed screw, with lid, anthracite	Exxact
WDE003278	Socket Outlet 3-gang earthed screw, anthracite	Exxact
WDE003279	Socket Outlet 3x Euro screw, anthracite	Exxact
WDE003280	Socket Outlet 2-gang, 2-circuits screw, anthracite	Exxact
WDE003286	Socket Outlet 2-gang earthed screw, anthracite	Exxact
WDE003287	Socket Outlet 2-gang earthed screw, anthracite	Exxact
WDE003288	Socket Outlet 2-gang, 2-circuits screw, anthracite	Exxact
WDE003290	Socket Outlet 2-gang earthed screw, with lid, anthracite	Exxact
WDE003291	Socket Outlet 2-gang earthed screw, with lid, anthracite	Exxact
WDE003292	Socket Outlet 2-gang earthed screwless, with lid, anthracite	Exxact
WDE003296	Socket Outlet 2-gang with earth branching screw, anthracite	Exxact
WDE003333	Socket Outlet 1-gang earthed screw, with adjustable illumination, anthracite	Exxact
WDE003396	Socket Outlet 2-gang earthed screwless x-terminals, anthracite	Exxact
WDE003397	Socket Outlet 2-gang earthed screw x-terminals, anthracite	Exxact
WDE003576	Socket Outlet 1-gang earthed screwless, anthracite	Exxact
WDE003577	Socket Outlet 1-gang earthed screwless, with lid, anthracite	Exxact
WDE003580	Socket Outlet 2-gang, 2-circuits screwless, anthracite	Exxact
WDE003581	Socket Outlet 2-gang diagonal unearthed screwless, anthracite	Exxact
WDE003584	Socket Outlet 2-gang earthed screwless, anthracite	Exxact
WDE003585	Socket Outlet 2-gang earthed screwless, anthracite	Exxact
WDE003586	Socket Outlet 2-gang diagonal earthed screwless, anthracite	Exxact
WDE003588	Socket Outlet 2-gang, 2-circuits screwless, anthracite	Exxact
WDE003678	Socket Outlet 3-gang earthed screw, anthracite	Exxact

### Schneider Electric Industries SAS

Adresse / Address:  
35, rue Joseph Monier,  
92500 Rueil-Malmaison, France

<http://www.schneider-electric.com>

### Legal information / Mentions légales

Société par actions simplifiée au capital de 896 313 776 euros  
954 503 439 rcs Nanterre – code APE : 2712Z  
Siret : 954 503 439 01719  
n° ident. TVA : FR 04 954 503 439  
Siège social : 35 rue Joseph Monier  
F – 92500 Rueil-Malmaison

## Déclaration UE de Conformité EU Declaration of Conformity

N°/Nr: 1003539-5

Annexe / Annex

5/7

Modèles / Product	Objet de la déclaration / Object of the declaration	Assortiment / Range
WDE003679	Socket Outlet 3x Euro screw, anthracite	Exxact
WDE003686	Socket Outlet 2-gang diagonal earthed screw, anthracite	Exxact
WDE004176	Socket Outlet 1-gang earthed screwless, metallic	Exxact
WDE004177	Socket Outlet 1-gang earthed screwless, with lid, metallic	Exxact
WDE004180	Socket Outlet 2-gang, 2-circuits screwless, metallic	Exxact
WDE004184	Socket Outlet 2-gang earthed screwless, metallic	Exxact
WDE004185	Socket Outlet 2-gang earthed screwless, metallic	Exxact
WDE004188	Socket Outlet 2-gang, 2-circuits screwless, metallic	Exxact
WDE004276	Socket Outlet 1-gang earthed screw, metallic	Exxact
WDE004277	Socket Outlet 1-gang earthed screw, with lid, metallic	Exxact
WDE004278	Socket Outlet 3-gang earthed screw, metallic	Exxact
WDE004279	Socket Outlet 3x Euro screw, metallic	Exxact
WDE004280	Socket Outlet 2-gang, 2-circuits screw, metallic	Exxact
WDE004286	Socket Outlet 2-gang earthed screw, metallic	Exxact
WDE004287	Socket Outlet 2-gang earthed screw, metallic	Exxact
WDE004288	Socket Outlet 2-gang, 2-circuits screw, metallic	Exxact
WDE004296	Socket Outlet 2-gang with earth branching screw, metallic	Exxact
WDE004333	Socket Outlet 1-gang earthed screw, with adjustable illumination, metallic	Exxact
WDE004396	Socket Outlet 2-gang earthed screwless x-terminals, metallic	Exxact
WDE004397	Socket Outlet 2-gang earthed screw x-terminals, metallic	Exxact
WDE004493	Socket Outlet 1-gang earthed screw, with transparent front & inlays	Exxact
WDE004494	Socket Outlet 1-gang earthed screw, brushed steel	Exxact
WDE004576	Socket Outlet 1-gang earthed screwless, metallic	Exxact
WDE004577	Socket Outlet 1-gang earthed screwless, with lid, metallic	Exxact
WDE004580	Socket Outlet 2-gang, 2-circuits screwless, metallic	Exxact
WDE004581	Socket Outlet 2-gang diagonal unearthed screwless, metallic	Exxact
WDE004584	Socket Outlet 2-gang earthed screwless, metallic	Exxact
WDE004585	Socket Outlet 2-gang earthed screwless, metallic	Exxact
WDE004586	Socket Outlet 2-gang diagonal earthed screwless, metallic	Exxact
WDE004588	Socket Outlet 2-gang, 2-circuits screwless, metallic	Exxact
WDE004678	Socket Outlet 3-gang earthed screw, metallic	Exxact
WDE004679	Socket Outlet 3x Euro screw, metallic	Exxact
WDE004686	Socket Outlet 2-gang diagonal earthed screw, metallic	Exxact

### Schneider Electric Industries SAS

Adresse / Address:  
35, rue Joseph Monier,  
92500 Rueil-Malmaison, France

<http://www.schneider-electric.com>

### Legal information / Mentions légales

Société par actions simplifiée au capital de 896 313 776 euros  
954 503 439 rcs Nanterre – code APE : 2712Z  
Siret : 954 503 439 01719  
n° ident. TVA : FR 04 954 503 439  
Siège social : 35 rue Joseph Monier  
F – 92500 Rueil-Malmaison

## Déclaration UE de Conformité EU Declaration of Conformity

N°/Nr: 1003539-5

Annexe / Annex

6/7

Modèles / Product	Objet de la déclaration / Object of the declaration	Assortiment / Range
WDE004893	Socket Outlet 1-gang earthed screwless, transparent	Exxact
WDE004894	Socket Outlet 1-gang earthed screwless, brushed steel	Exxact
WDE008248	Socket Outlet 1-gang earthed screw, with lid, white	Exxact
WDE008249	Socket Outlet 2-gang earthed screw, with lid, white	Exxact
WDE008273	Socket Outlet 1x Schuko & 2x Euro screw, white	Exxact
WDE008276	Socket Outlet 1-gang earthed screw, white	Exxact
WDE008277	Socket Outlet 1-gang earthed screwless, white	Exxact
WDE008279	Socket Outlet 3x Euro screw, white	Exxact
WDE008280	Socket Outlet 1-gang earthed screw, white	Exxact
WDE008281	Socket Outlet 2-gang diagonal unearthed screw, white	Exxact
WDE008283	Socket Outlet 4x Euro screw, white	Exxact
WDE008284	Socket Outlet 2-gang unearthed screw, white	Exxact
WDE008285	Socket Outlet 2-gang earthed screw, white	Exxact
WDE008286	Socket Outlet 2-gang diagonal earthed screw, white	Exxact
WDE008287	Socket Outlet 2-gang earthed screw, white	Exxact
WDE008288	Socket Outlet 2-gang earthed screw, white	Exxact
WDE008289	Socket Outlet 2-gang earthed screwless, white	Exxact
WDE008291	Socket Outlet 4-gang unearthed screw, white	Exxact
WDE008292	Socket Outlet 4-gang earthed screw, white	Exxact
WDE008476	Socket Outlet 1-gang earthed screw, anthracite	Exxact
WDE008479	Socket Outlet 3x Euro screw, anthracite	Exxact
WDE008481	Socket Outlet 2-gang diagonal unearthed screwless, anthracite	Exxact
WDE008486	Socket Outlet 2-gang diagonal earthed screw, anthracite	Exxact
WDE008487	Socket Outlet 2-gang earthed screw, anthracite	Exxact
WDE008676	Socket Outlet 1-gang earthed screw, metallic	Exxact
WDE008679	Socket Outlet 3x Euro screw, metallic	Exxact
WDE008681	Socket Outlet 2-gang diagonal unearthed screw, metallic	Exxact
WDE008686	Socket Outlet 2-gang diagonal earthed screw, metallic	Exxact
WDE008687	Socket Outlet 2-gang earthed screw, metallic	Exxact
WDE008876	Socket Outlet 1-gang earthed screw, white glass frame	Exxact
WDE008887	Socket Outlet 2-gang earthed screw, white glass frame	Exxact
WDE008976	Socket Outlet 1-gang earthed screw, black glass frame	Exxact
WDE008987	Socket Outlet 2-gang earthed screw, anthracite	Exxact

### Schneider Electric Industries SAS

Adresse / Address:  
35, rue Joseph Monier,  
92500 Rueil-Malmaison, France

<http://www.schneider-electric.com>

### Legal information / Mentions légales

Société par actions simplifiée au capital de 896 313 776 euros  
954 503 439 rcs Nanterre – code APE : 2712Z  
Siret : 954 503 439 01719  
n° ident. TVA : FR 04 954 503 439  
Siège social : 35 rue Joseph Monier  
F – 92500 Rueil-Malmaison

## Déclaration UE de Conformité EU Declaration of Conformity

N°/Nr: 1003539-5

Annexe / Annex

7/7

Modèles / Product	Objet de la déclaration / Object of the declaration	Assortiment / Range
WDE009276	Socket Outlet 1-gang earthed screw, brushed steel	Exxact
WDE009287	Socket Outlet 2-gang earthed screw, brushed steel	Exxact
WDE015576	Socket Outlet 1-gang earthed screwless, white	Exxact
WDE015588	Socket Outlet 4-gang earthed screwless, white	Exxact
WDE015591	Socket Outlet 2-gang unearthed screwless, white	Exxact
WDE015596	Socket Outlet 2-gang earthed screwless, white	Exxact
WDE015676	Socket Outlet 1-gang earthed screw, white	Exxact
WDE015687	Socket Outlet 2-gang earthed screw with sep. circuits, white	Exxact
WDE015688	Socket Outlet 4-gang earthed screw, white	Exxact
WDE015689	Socket Outlet 2-gang with earth branching screw, white	Exxact
WDE015691	Socket Outlet 2-gang without earth branching screw, white	Exxact
WDE015788	Socket Outlet 4-gang earthed screwless including ladder sheet, white	Exxact
WDE015789	Socket Outlet 2-gang earthed screwless including ladder sheet, white	Exxact
WDE016076	Socket Outlet 1-gang earthed screw, white	Exxact
WDE016091	Socket Outlet 2-gang without earth branching screw, white	Exxact
WDE016089	Socket Outlet 2-gang with earth branching screw, white	Exxact
WDE016088	Socket Outlet 4-gang earthed screw, white	Exxact
WDE008877	Socket Outlet 1-gang earthed screw, glass crystal white	Exxact
WDE008888	Socket Outlet 2-gang earthed screw, glass crystal white	Exxact
WDE002999	Socket Outlet 2-gang earthed screwless, white	Exxact
WDE002997	Socket Outlet 1-gang with complete cover, white	Exxact
WDE002998	Socket Outlet 1-gang with c-plate, white	Exxact
WDE002999	Socket Outlet 2-gang earthed, white	Exxact
WDE002197	Socket Outlet 2-gang with Primo cover, screwless, 440V, white	Exxact

### Schneider Electric Industries SAS

Adresse / Address:  
35, rue Joseph Monier,  
92500 Rueil-Malmaison, France  
<http://www.schneider-electric.com>

Legal information / Mentions légales  
Société par actions simplifiée au capital de 896 313 776 euros  
954 503 439 rcs Nanterre – code APE : 2712Z  
Siret : 954 503 439 01719  
n° ident. TVA : FR 04 954 503 439  
Siège social : 35 rue Joseph Monier  
F – 92500 Rueil-Malmaison