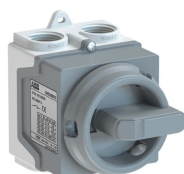


PRODUCT-DETAILS

# ONE20M2G

## ONE20M2G Enclosed Switch Disconnecter



### Informations générales

Extension du type de produit	ONE20M2G
Code de produit	1SCA135532R1001
EAN	6417019641225
Description courte	ONE20M2G Enclosed Switch Disconnecter
Description longue	<p>The plastic enclosed switch disconnecter, is well suited for commercial and residential use. There are 3 color alternatives available, red/yellow, dark grey, and white. Typical applications could be fans, pumps, kitchen appliances etc. The product withstand water and rain, acc. to class IP67, and is well suited for indoor and outdoor use. The plastic is UV protected. Two cable glands are included in the delivery. The terminals are easily available, thanks to the enclosure design and the removable switch. PE terminal included.</p>

### Circular Value

Conflict Minerals Reporting Template (CMRT)	9AKK108467A5658
REACH Declaration	1SCC340076D0201
Informations RoHS	1SCC340075D0201
Toxic Substances Control Act - TSCA	1SCC340095D0201

## Commande

Quantité minimum	10 pièce
Code douanier	85363030
Pays d'origine	Finland (FI)

## Popular Downloads

Fiche produit, informations techniques	1SCC340015C0201
Instructions et manuels	1SCC390135M0204
Mechanical Drawings	ONE926584RM20.stp

## Dimensions

Produit Largeur Net	65 mm
Produit Hauteur Net	92 mm
Produit Longueur Net	84 mm
Poids net	0.11 kg

## Technique

Rated Operational Current AC-22A ( $I_e$ )	(230 V) Single Phase 20 A
Rated Operational Current AC-23A ( $I_e$ )	(230 V) Single Phase 15.2 A
Rated Operational Power AC-23A ( $P_e$ )	(230 V) Single Phase 2.6 kW
Conventional Thermal Current ( $I_{the}$ )	Fully Enclosed 20 A
Tension assignée de tenue aux chocs ( $U_{imp}$ )	4 kV
Tension assignée d'isolement ( $U_i$ )	acc. to IEC/EN 60664-1 690 V
Handle Color	Grey
Handle Type	Round handle
Normes et standards	IEC 60947-1, -3
Nombre de pôles	2
Connecting Capacity Main Circuit	Screw Clamp 0.75 ... 4 mm <sup>2</sup> Screw Clamp / PE Terminal 1pc, 0.75 ... 4 mm <sup>2</sup>
Section de câble	0.75 ... 4 mm <sup>2</sup>
Cable Entry Position	Top and/or Bottom
Cable Outlets Per Side	2xM20 / 2xM20
Indice de protection	acc. to IEC 60529 IP67
Résistance aux chocs	Housing IK09
Matériau du boîtier	Plastic
Mounted Auxiliary Contacts	0 NO, 0 NC

Number of Auxiliary Contacts NC	0
Number of Auxiliary Contacts NO	0
Couple de serrage	Main Circuit 1.1 N·m

## Technique UL/CSA

Couple de serrage	Main Circuit 1.1 N·m
-------------------	----------------------

## Environnement

Statut RoHS	Following EU Directive 2011/65/EU
Toxic Substances Control Act - TSCA	1SCC340095D0201

## Certificats et Déclarations (Numéro de document)

Déclaration de Conformité - CE	1SCC343001D2702
REACH Declaration	1SCC340076D0201

## Emballage

Emballage Niveau 1 Unités	box 1 pièce
Emballage Niveau 1 Largeur	85 mm
Emballage Niveau 1 Longueur	103 mm
Emballage Niveau 1 Hauteur	66 mm
Emballage Niveau 1 Poids	0.15 kg
Emballage Niveau 1 EAN	6417019641225

## Classifications

Code de classification d'objet	Q
ETIM 7	EC000216 - Switch disconnecter
ETIM 8	EC000216 - Switch disconnecter
ETIM 9	EC000216 - Switch disconnecter (low voltage)
eClass	V11.1 : 27371403
Catégorie DEEE	5. Small Equipment (No External Dimension More Than 50 cm)

---

## Catégories

---

Produits basse tension → Interrupteurs et appareillage à fusibles en coffret → Interrupteurs-sectionneurs en coffret → Enclosed Switch-Disconnectors

