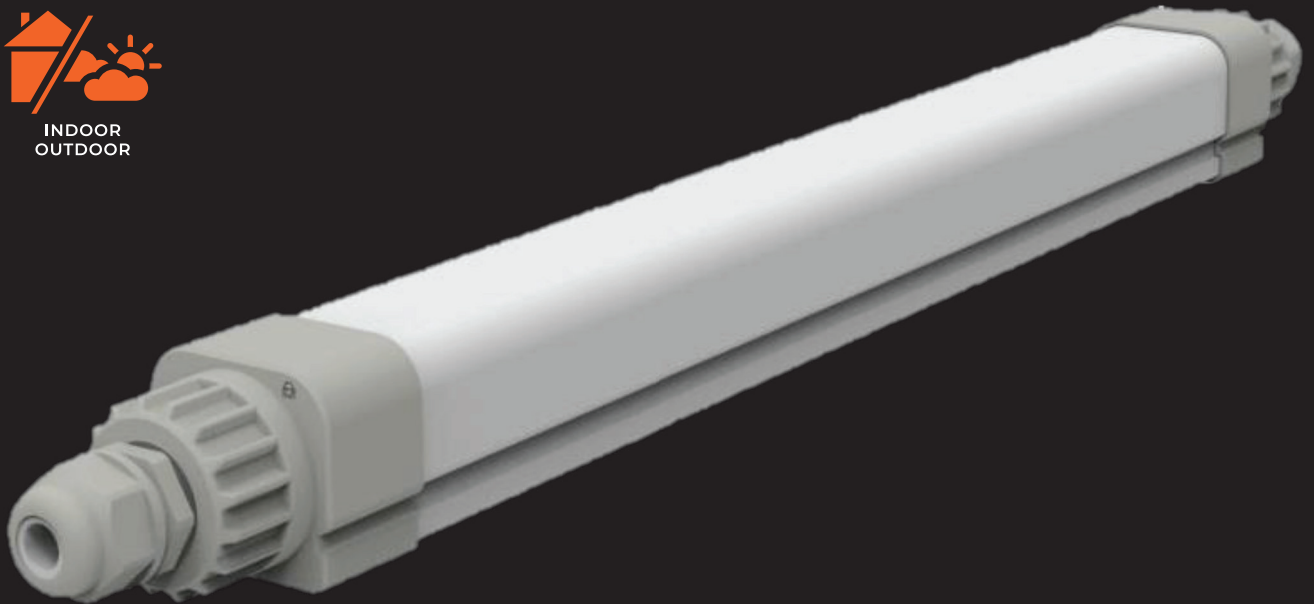


# THORGEON

LIGHTING



Wiring lamps 8

## WATERPROOF LUMINAIRE

### 150cm

### 03043

 LED  
POWER  
33/50W

 COLOR  
4200K

 LUMENS  
4000/6000

**Hz**  
50-60

  
175-265V

  
120°

  
Ra80

  
NO DIMM

  
50000

  
>1 sek

  
15000

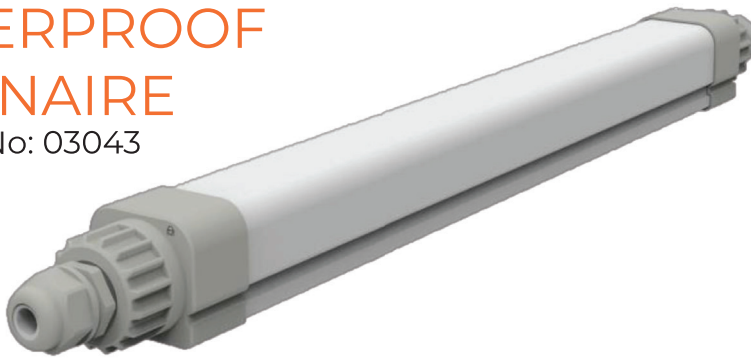
  
IP65

  
IK08

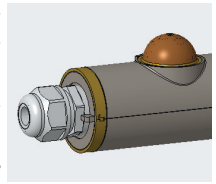
  
Class II

## WATERPROOF LUMINAIRE

MODEL No: 03043

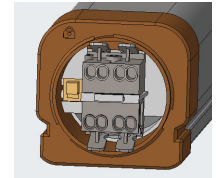


Enable for PIR sensor module with Master & Slave function, 4 wires



Dual power switchable

Terminal block easy for pull out



### FEATURES

- Smooth and high transparency opal polycarbonate diffuser
- In-built Aluminum stick for safety and heating dissipation
- Loop in and loop out tool-less installation
- Evenly LED emitting
- Loop through by 4 wires for non-dim version, 6 wires for Dali version
- Tridonic Dali driver, dim range: 10~100%
- Vandal resistance level: IK08
- Insulation class: II
- M20 waterproof connector

### INSTALLATION TYPE

- Surface mounted
- Suspended (Cable is required)

### INCLUDES

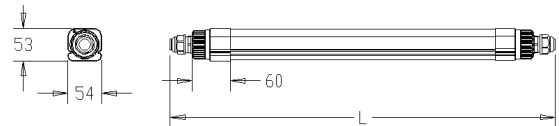
- Mounting accessories

## TECHNICAL PARAMETERS

LED POWER:	33/50W
LUMENS:	4000/6000
COLOR TEMPERATURE:	4200K
ANGLE:	120°
0-100%:	>1 SEK
DIMM RANGE:	NO DIMM
VOLTAGE:	175-265 V
FREQUENCY:	50-60HZ
LIFETIME:	50000H
CLICKS:	15000
CRI:	<RA 80
IP RATING:	IP20
VANDAL RESISTANCE LEVEL:	IK08

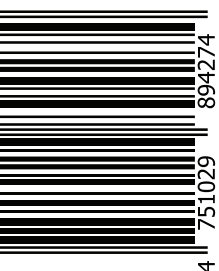
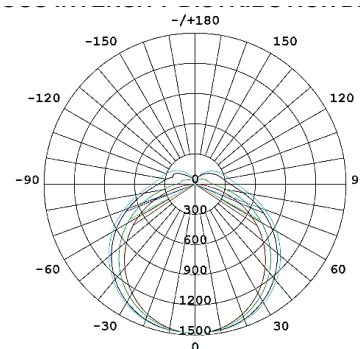
TEMPERATURE RANGE: -20°- +40°C

### DIMENSIONS:



WEIGHT: 1.08 KG

### LUMINOUS INTENSITY DISTRIBUTION DIAGRAM:



THORGEON

Manufactured in PRC



www.thorgeon.com  
SIA "ATTA-1", Jurkalnes street 1,  
Riga, Latvia, LV-1046

