

Presence detector
353-651021

4 year warranty

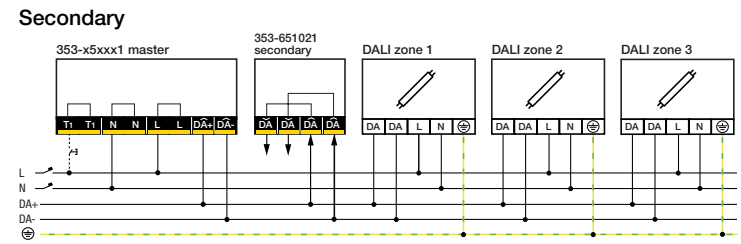


Ø 76 mm

- EN** Presence detector P46MR, DALI-2, secondary and BMS, 12-13 m, 360°, SnapFit, for flush mounting
- NL** Aanwezigheidsmelder P46MR, DALI-2, secundair en BMS, 12-13 m, 360°, SnapFit, voor inbouw
- FR** Détecteur de présence P46MR, DALI-2, secondaire et BMS, 12-13 m, 360°, SnapFit, à encastrer
- DE** Präsenzmelder P46MR, DALI-2, Sekundär und BMS, 12-13 m, 360°, SnapFit, für Deckeneinbau
- DK** Tilstedeværelsessensor P46MR, DALI-2, sekundær og BMS, 12-13 m, 360°, SnapFit, planforsænket
- SE** Närvarosensor P46MR, DALI-2, sekundär och BMS, 12-13 m, 360°, SnapFit, för infälld montering
- NO** Tilstedeværelsessensor P46MR, DALI-2, sekundær og BMS, 12-13 m, 360°, SnapFit, til innfelt montering
- IT** Rilevatore di presenza P46MR, DALI-2, secondario e BMS, 12-13 m, 360°, SnapFit, per montaggio a incasso
- PL** Czujnik obecności P46MR, DALI-2, podrzędny i BMS, 12-13 m, 360°, SnapFit, do montażu podtynkowego
- SK** Detektor prítomnosti P46MR, DALI-2, podružný a BMS, 12-13 m, 360°, SnapFit, na zapustenú montáž

Wiring ⚠ 230 V/DALI power – OFF

Aansluitschema / Schéma de raccordement / Verdrahtung / Tilslutningsskema / Kopplingschema / Ledningstilkopling / Cablaggio / Okablowanie / Inštalácia

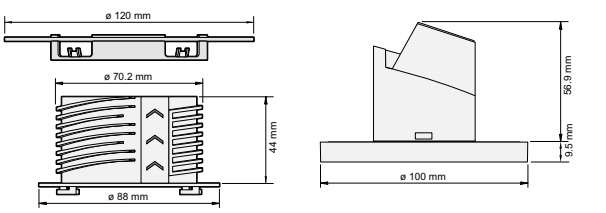


⚠ This product must be secured with a miniature circuit breaker (MCB) of max. 16 A in the electrical cabinet. The MCB rating is limited by national installation rules.



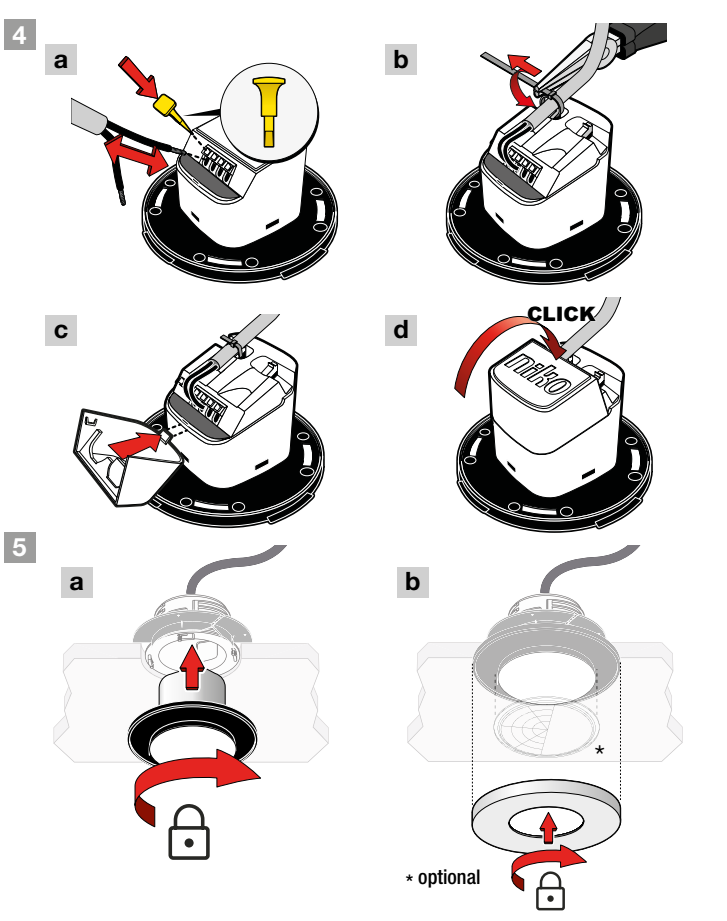
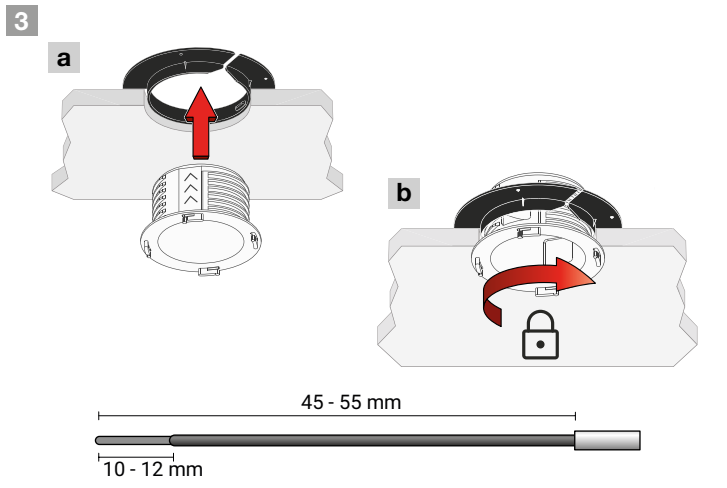
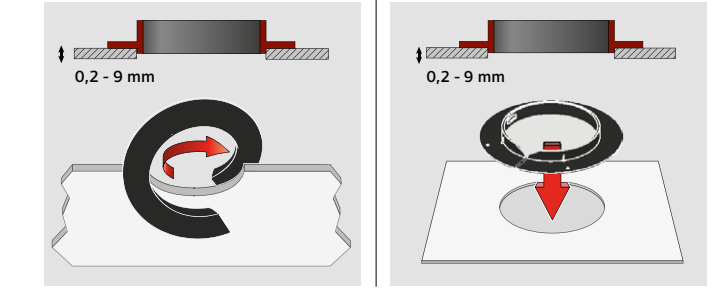
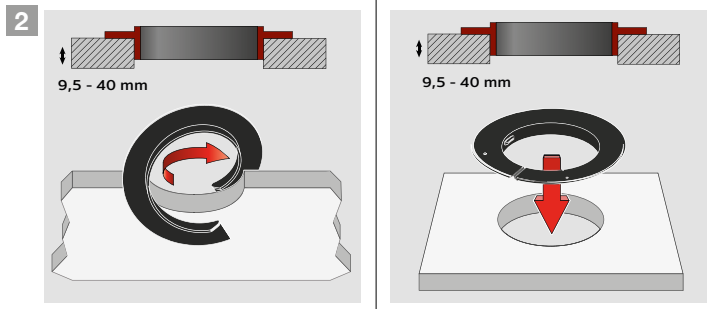
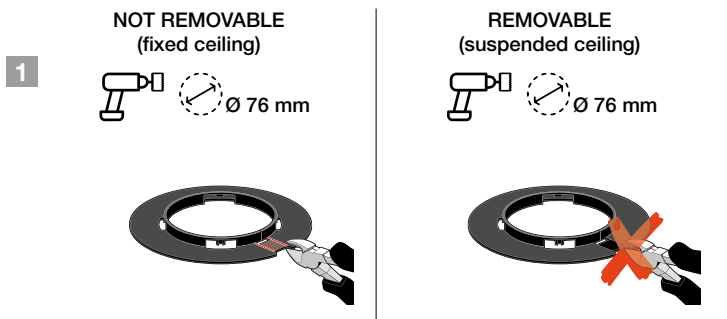
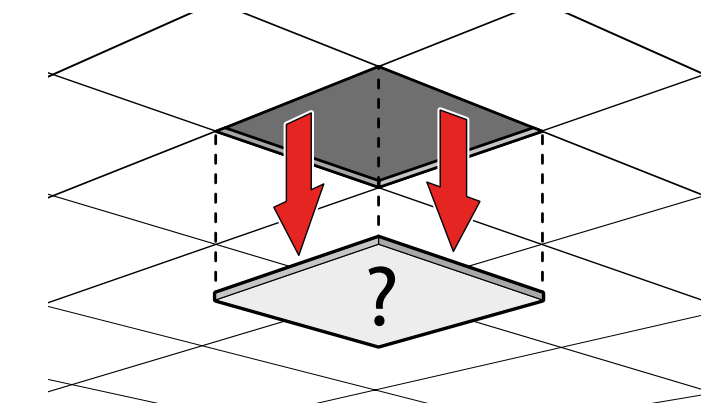
Dimensions

Afmetingen / Dimensions / Abmessungen / Dimensioner / Mått / Dimensjoner / Dimensioni / Wymiary / Rozmery



Installation ⚠ 230 V/DALI power – OFF

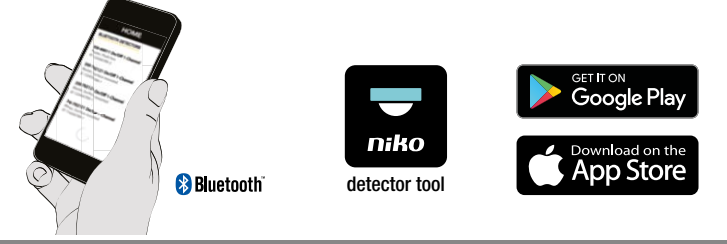
Installatie / Installation / Installation / Installation / Installation / Installasjon / Installazione / Instalacja / Inštalácia



App settings ⚠ 230 V/DALI power – ON

App-instellingen / Réglages de l'app / App-Einstellungen / App indstillinger / Appställningar / App-innstillinger / Impostazioni dell'app / Ustawienia aplikacji / Nastavenia aplikácie

	Sensitivity
Factory Settings	High



Settings by BMS software ⚠ DALI power – ON

DALI BMS-instellingen / Réglages DALI BMS / DALI BMS Einstellungen / DALI BMS indstillinger / DALI BMS-Appställningar / DALI BMS-innstillinger / Impostazioni DALI BMS / Ustawienia DALI BMS / Nastavenia DALI BMS

Table memory bank 2			
Address	Description	Default value	Memory type
0x00	Address and last accessible memory location	0x03	ROM
0x01	Indicator byte (manufacture definable)	0x00	any
0x02	Memory bank lock byte (≠0x55 = Read Only else Read/ Write)	0xFF	RAM
0x03	PIR sensitivity segment A (MR, LR and HC detectors) 4 = MAX 3 = HIGH 2 = LOW 1 = MIN 0 = OFF	0x03	NVM
0x04	PIR sensitivity segment B (LR and HC detectors) 4 = MAX 3 = HIGH 2 = LOW 1 = MIN 0 = OFF	0x03	NVM
0x05	PIR sensitivity segment C (LR and HC detectors) 4 = MAX 3 = HIGH 2 = LOW 1 = MIN 0 = OFF	0x03	NVM
0x06	LUX range 0 = NORMAL 0 - 1023 lux, 10-bit 1 = HIGH 0 - 10360 lux, 14 bit	0x00	NVM
0x07	Bluetooth® communication 0 = enabled, 1 = disabled	0x00	NVM

Note: The detector reboots when Bluetooth® communication is disabled or re-enabled. This lasts for approximately 100 - 500 ms.

LED behaviour ⚠ 230 V/DALI power – ON

Ledgedrag / Comportement des LED / LED-Verhalten / LED funktioner / LED-funktioner / LED-funksjon / Comportamento del LED / Zachowanie LED / LED signalizácia

EN			
Green LED continuous on	●	Connection OK	
Green LED flashing	●	Warming up*	Wait
Red LED continuous on	●	Error	More info -->
Blue LED flashing	●	Walk test active	

* When Bluetooth® communication is disabled, the green LED does not flash while warming up.

NL			
Groene led brandt	●	Verbinding OK	
Groene led knippert	●	Warmt op*	Even geduld
Rode led brandt	●	Fout	Meer informatie -->
Blaauwe led knippert	●	Wandeltest geactiveerd	

* Als Bluetooth®-communicatie uitgeschakeld is, zal de groene led niet knipperen tijdens het opwarmen.

FR			
LED verte allumée en continu	●	Connexion OK	
LED verte clignote	●	Chauffe*	Attendez
LED rouge allumée en continu	●	Erreur	Plus d'info -->
LED bleue clignote	●	Test de mouvement actif	

* Lorsque la communication Bluetooth® est désactivée, le voyant vert ne clignote pas pendant le démarrage.

DE			
Grüne LED leuchtet	●	Verbindung OK	
Grüne LED blinkt	●	Aufwärmen*	Warten
Rote LED leuchtet	●	Fehler	Mehr Info -->
Blaue LED blinkt	●	Bewegungstest aktiv	

* Wenn die Bluetooth®-Kommunikation deaktiviert ist, blinkt die grüne LED während der Aufwärmphase nicht.

DK			
Grøn LED lyser konstant	●	Forbindelse OK	
Grøn LED blinker hurtigt	●	Varmer op*	Vent
Rød LED lyser konstant	●	Fejl	Mere info -->
Blå LED blinker hurtigt	●	Gå-test aktiv	

* Når Bluetooth® kommunikation deaktiveres, blinker den grønne LED ikke under opvarmning.



