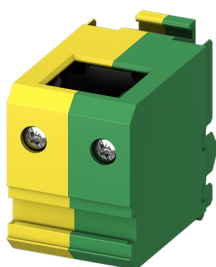


PRODUCT-DETAILS

ZLSP959

ZLSP959 Incoming POWER BAR



General Information

Extended Product Type	ZLSP959
Product ID	2CCV672609R0001
EAN	7612271490881
Catalog Description	ZLSP959 Incoming POWER BAR
Long Description	PE terminal 250A Additional socket 50 mm ² to 120 mm ² litze wire with ferrule, max. 1 wire or 10 mm ² – 25 mm ² two wires, 250 A. For the SMISLINE TP 125A and 250A system

Technical

Rated Current (I _n)	250 A
Surface Finishing	Tinned
Options Provided	ZLSP
Model Number	Flat

Environmental

RoHS Status	Following EU Directive 2011/65/EU and Amendment 2015/863 July 22, 2019
RoHS Information	9AKK107991A9647
Environmental Information	9AKK108467A9561

Conflict Minerals
Reporting Template
(CMRT)

9AKK108468A3363

Dimensions

Product Net Width	36 mm
Product Net Height	46 mm
Product Net Depth / Length	47 mm
Product Net Weight	88 g
Dimension Diagram	9AKK107492A6192

Ordering

Minimum Order Quantity	1 piece
Package Level 1 Units	carton 1 piece
Package Level 1 Gross Weight	88 g
E-Number (Switzerland)	809997575

Certificates and Declarations

Declaration of Conformity - CE	9AKK107991A9647
-----------------------------------	-----------------

Installation

Instructions and Manuals	2CCR213002B0001
--------------------------	-----------------

Popular Downloads

Data Sheet, Technical Information	9AKK107492A6192
--------------------------------------	-----------------

Classifications

ETIM 8	EC001522 - Busbar
ETIM 9	EC001522 - Busbar
WEEE Category	5. Small Equipment (No External Dimension More Than 50 cm)
WEEE B2C / B2B	Business To Business
CN8	85389040
eClass	V11.0 : 27370303
Object Classification Code	F

Categories

Low Voltage Products and Systems → Modular DIN Rail Products → Plug-in Distribution Systems → Plug-in Distribution Systems
Accessories → Accessories for Plug-in Distribution Systems 250A

