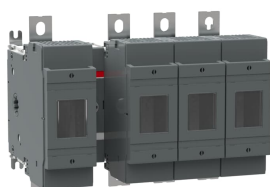


PRODUCT-DETAILS

OS250D13N1

OS250D13N1 SWITCH FUSE



General Information

Extended Product Type	OS250D13N1
Product ID	1SCA100221R1001
EAN	6417019352299
Catalog Description	OS250D13N1 SWITCH FUSE
Long Description	Switch Fuses,Front Operated,4-pole,13 (Between the Poles),DIN,0,1,Handle and shaft not included,Switched - With Solid Link

Circular Value

Conflict Minerals Reporting Template (CMRT)	9AKK108467A5658
REACH Declaration	1SCC011021D0201
RoHS Information	1SCC011020D0201

Ordering

Minimum Order Quantity	1 piece
Customs Tariff Number	85365080
Country of Origin	Finland (FI)

Popular Downloads

Data Sheet, Technical Information	1SCC311013C0201
Instructions and Manuals	1SCC311012M0219

Dimensions

Product Net Width	260 mm
Product Net Height	199 mm
Product Net Depth / Length	154 mm
Product Net Weight	4.7 kg 10.3 lb

Technical

Rated Operational Current AC-21A (I_e)	(500 V) 250 A (690 V) 250 A
Rated Operational Current AC-22A (I_e)	(380 ... 415 V) 250 A (500 V) 250 A (690 V) 250 A
Rated Operational Current AC-23A (I_e)	(380 ... 415 V) 250 A (500 V) 250 A (690 V) 250 A
Rated Operational Power AC-23A (P_e)	(220 ... 240 V) 75 kW (400 V) 140 kW (415 V) 145 kW (500 V) 170 kW (690 V) 250 kW
Conventional Free-air Thermal Current (I_{th})	$\Theta = 40\text{ °C}$ 250 A
Conventional Thermal Current (I_{the})	Fully Enclosed 250 A
Rated Impulse Withstand Voltage (U_{imp})	12 kV
Rated Insulation Voltage (U_i)	1000 V
Rated Operational Voltage	Main Circuit 690 V AC
Rated Short-time Withstand Current Low Voltage (I_{cw})	for 1 s 8 kiloampere rms
Rated Conditional Short-Circuit Current (I_{nc})	(690 V) 80 kA
Power Loss	at Rated Operating Conditions per Pole 23 W
Pollution Degree	3
Handle Type	Handle and shaft not included
Fourth Pole Position	Left Side
Fourth Pole Type	Switched - With Solid Link
Switches Operating	13 (Between the Poles)

Mechanism

Position of Line Terminals	Top In - Bottom Out, Bottom In - Top Out
Fuse Size	NH0 NH1
Fuse System	DIN
Operating Mode	Front Operated
Standards	IEC 60947-3
Mounting Type	Base mounting
Number of Poles	4
Terminal Type	Lug terminals
Terminal Width	25 mm
Tightening Torque	30 ... 44 N·m
Rated Current (I _n)	Main Circuit 250 A

Technical UL/CSA

Tightening Torque	30 ... 44 N·m
-------------------	---------------

Environmental

RoHS Status	Following EU Directive 2011/65/EU and Amendment 2015/863 July 22, 2019
-------------	--

Certificates and Declarations

CCC Certificate	CCC OS200-250 2016
Declaration of Conformity - CE	1SCC311095D2704
DNV GL Certificate	1SCC311123D0203
EAC Certificate	EAC OT_OTDC_OTL_OTP_OTR_OTU_OTE_OETL_OESA_OESC_OTM_OS_OSM_ .pdf
REACH Declaration	1SCC011021D0201

Container Information

Package Level 1 Units	box 1 piece
Package Level 1 Width	270 mm 10.6 in
Package Level 1 Depth / Length	310 mm 12.2 in
Package Level 1 Height	200 mm 7.9 in
Package Level 1 Gross Weight	4.9 kg 10.9 lb
Package Level 1 EAN	6417019352299

Classifications

Object Classification Code	Q
ETIM 7	EC001040 - Fuse switch disconnecter
ETIM 8	EC001040 - Fuse switch disconnecter
ETIM 9	EC001040 - Fuse switch disconnecter
eClass	V11.1 : 27371401
WEEE Category	5. Small Equipment (No External Dimension More Than 50 cm)

Categories

Low Voltage Products and Systems → Switches → Switch Fuses

