

PHILIPS

Maxos fusion

Retail & Industry lighting



Redefining
the standard
in trunking

Contents

| | |
|------------------------|-------------------------------------|
| 3 Meet Maxos fusion | 4 Trunking for your applications |
| 10 Optical overview | 14 Circular Economy |
| 16 Interact | 20 Customer stories |
| 24 Range overview | 30 Ordering information |



Meet Maxos fusion

Adaptable LED trunking system where quality, performance and flexibility meet



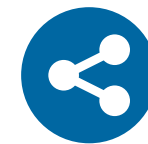
High quality of light, excellent uniformity and colour consistency

Maxos fusion's offers multiple flux/beam and color choices, plus a portfolio of specially-designed OptiSuit lenses for unmatched performance with visibly superior quality of light.



High efficiency and long life

With very high efficacy options (up to 185lm/W) and very long lumen maintenance (100,000 hours @L80), designers can create optimized, bespoke solutions with an attractive total cost of ownership.



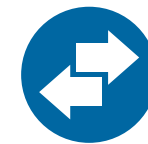
Ready to connect

Dedicated sensor units enable you to take advantage of full advantage of InterAct system propositions so customers can make data-driven decisions in retail and industrial applications.



Covers extensive applications

The ideal choice for a wide range of applications and lighting requirements from retail supermarkets and hypermarkets, to industry production floors and distribution centers and warehouses.



Freedom to position and (re) position

Maxos fusion rail is the flexible, future-proof trunk that underpins the system. Positioning freedom makes it easy to upgrade/add/change components on the rail to extend the life of the backbone.



A solution for all

Maxos fusion rail accommodates up to 13 wires in the trunk, so it can handle a wide variety of electrical circuit options, including emergency lighting to fit specific project demands.

The right light for retail stores

In addition to helping you save on energy costs and improve sustainability, Maxos fusion gives you the power to design a store concept with a customizable ambience. Use the Maxos fusion trunking system as the flexible backbone enabling you to update according to new store layouts or trends in a very efficient way. Thanks to the combination of the trunk with the family of fixtures - including spots and non-linear - you can efficiently and in a non-disruptive way update your store lighting to match new concepts.

Flexible layouts

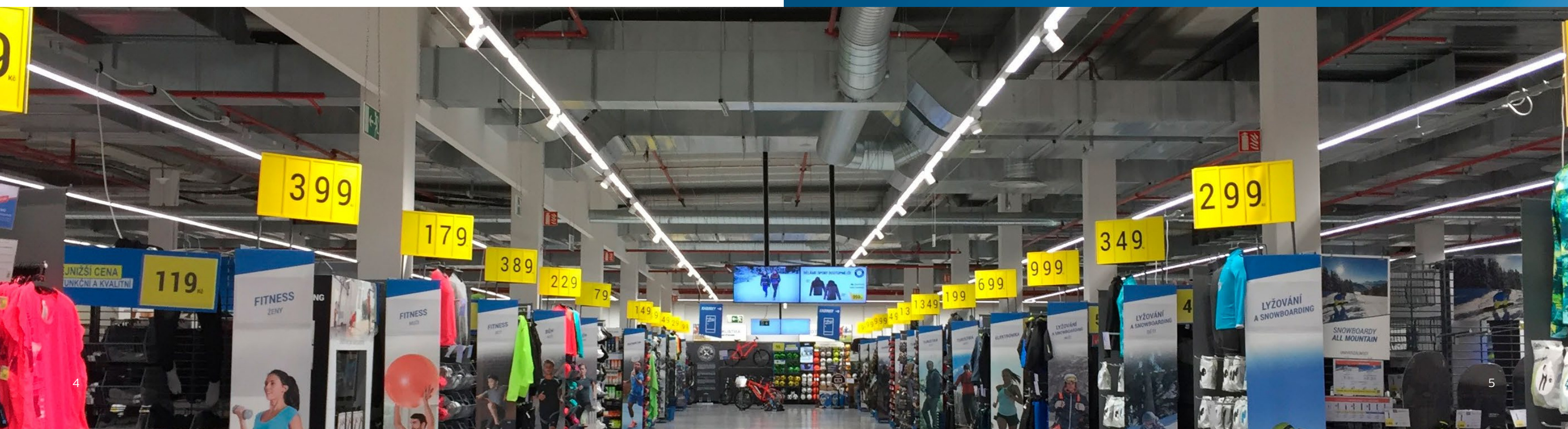
The adaptable new lighting system is fast to install, reposition and maintain. You have the freedom to click the lighting unit along the line so it can be easily positioned and re-configured.

Merchandise sparkles

Our new range of optics has been specially designed to create beautiful ambiances in retail environments. The pleasant, diffuse light makes all the merchandise on display sparkle with quality. With a CRI of 80+ it brings out the best in every color and texture to enhance your store experience and ensure shoppers stay for longer. Maxos fusion provides comfortable light that is easy on the eye.

Future proof

Maxos fusion is also a carrier of connectivity. As the Internet of Things becomes an integral part of the retail experience, it is ready to collect data and can use the infrastructure to send data - even to your shoppers. The trunking is ready to be connected to lighting systems such as Interact Retail Scene management to create dynamic lighting and increase savings further. Interact Retail Indoor navigation brings the power of GPS right into your store.



The right light for industrial applications

Creating a safe environment is the first priority for industrial spaces. Now you can comply with industry regulations at the same time as maximizing the value of your investment with Maxos fusion.

Excellent TCO

If you're looking for a general lighting solution with excellent performance, Maxos fusion offers a high level of great energy savings and minimum maintenance costs over a long and reliable lifetime.

Comply with regulations

Maxos fusion meets all the relevant norms for industry applications. It delivers high illuminance levels at the required color temperatures with a CRI of 80+ and glare factors. Option to be connecting emergency lighting option, IP54 classification and the silicone free features provide you with a totally compliant lighting installation.

Quality of light

Unlike conventional fluorescent installations, Maxos fusion provides outstanding quality of light. The light distribution is highly uniform without artefacts. And thanks to the wide variety of optics you can direct the light to precisely where it is required.

Freedom of positioning

The adaptable new lighting system is fast to install, easy to reposition and maintain. You have full freedom to click the lighting unit along the line so it can be easily positioned and re-configured resulting in reduced downtime and the costs associated with layout changes. With up to 13 wires, it can also handle all electrical emergency lighting schemes.

Future ready

To get more out of your lighting, you can connect Maxos fusion to GreenWarehouse, enabling you to define your own lighting zones, set dimming levels and plan lighting patterns using motion sensors and lighting controls.

Maxos fusion is also a carrier of connectivity. The trunking is ready to be connected to lighting system and software applications such as Interact Industry to optimize efficiency, maximize energy savings and improve productivity and safety.

Food production

Maxos fusion complies with international food safety standards which means:

- Particles can't fall out of the Maxos fusion trunking and dust and moisture will not accumulate in the lighting unit, thus maintaining hygienic conditions.
- No loose components and no glass in the lighting installation for optimized food safety.
- Reduced power load compared to traditional systems (up to a factor of 2.5) ensures food production processes are not influenced by the lighting installation.
- Easy to clean lighting equipment.

Automotive

- Flexibility is key in the automotive industry. If the assembly line needs to be rearranged, the Maxos fusion lighting can be adapted in a minute.
- Maxos fusion prevents glare, resulting in motivated employees with higher productivity and no complaints.
- Impact resistance and dust/water tightness are required along the assembly lines. The optional IP54 solution combines them both, resulting in a sturdy and reliable lighting solution.
- Maxos fusion is silicone free, meeting specific demands in the automotive industry and preventing issues in the surface coating processes.

Warehouse and logistics

- Maxos fusion offers a high degree of flexibility to mount and reposition luminaires anywhere along the line. This accommodates tenant changes or change in usage very easily.
- Appropriate optics for areas with very high ceilings and narrow aisles provides the right lighting for employees and creates excellent visibility, and a safe environment in any type of warehouse.



OptiSuit™, a superior lighting choice



It is clear that specifying the right lighting for retail and industrial requires finding the right balance between efficiency, performance, energy savings and safety. But in order to make a fully-informed lighting decision, you must also consider the quality of light, its color consistency and uniformity.

Why? Because these 'qualitative' aspects bring different advantages to different applications. In retail environments, lighting creates attractive stores where people like to shop. In industrial settings, lighting enhances visual acuity, providing the right illumination to keep productivity high.

And key to this is where the light actually falls, which is why optical distribution is so important. Thanks to the OptiSuit portfolio of lenses, Maxos fusion promises a superior choice of 11 different optical distributions. These uniquely-designed lenses provide the right light, precisely where it is required for the targeted application. At the same time, it maintains the highest quality and uniformity of light to create a consistent look and feel.

In addition to creating attraction, providing guidance and maximizing clarity, OptiSuit lens plates are also designed to optimize the:

- sleek appearance of the fixture
- consistency of light color in all directions
- glare limitation
- accent factor
- beam characteristics

Designed for modularity

What makes the OptiSuit™ portfolio unique is its revolutionary concept. A series of precisely-designed lenses deliver and direct the light in the most efficient way possible, while maintaining consistent qualitative color parameters. This optical portfolio is used as a building block to develop linear panels for trunk mounting, or non-linear panels for track mounting. That means OptiSuit™ offers lighting designers and engineers a diverse range of luminaires with the same advantages, to create bespoke solutions that fulfil the exact requirements of retail or industrial applications. For example, OptiSuit™ can be used to create a linear LED panel (Maxos fusion) of up to 2.3 meters in length. Or it can be used to create a rectangular panel (StoreSet) of 200 x 600mm.

Optimized for a wide range of applications

The OptiSuit™ portfolio is suitable for a wide range of applications, from high bay and low bay areas, to small narrow corridors and large open spaces. Due to the unique shape of the lenses, the light emitted by each LED is transformed in such a way that, collectively, they provide high quality light that is directed for a specific purpose. For example, some OptiSuit™ optics are dedicated to back office and general lighting requirements. Others are especially designed for retail aisles, directing light to shelves and displays to attract more attention to the merchandise. And some are intended to optimize the routing of people and products in factory or warehouse environments.

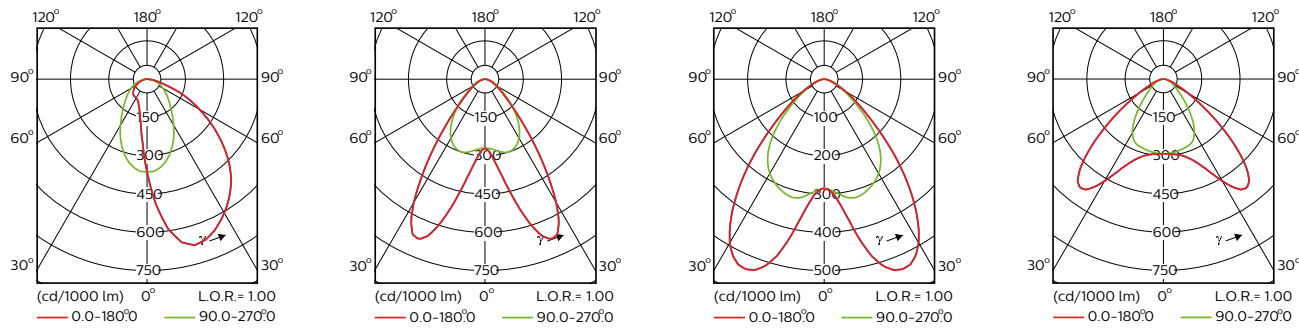


A choice of beam characteristics

In terms of lighting design, light distribution is just as important as visual comfort and should be dedicated to illuminating the space according to how it is used. With a portfolio of 10, well-balanced beam options from extra narrow to very wide beam, OptiSuit™ can optimize the lighting in every application (see below). All beams are characterized by very smooth, continuous beam shape, ensuring there are no visible luminance discontinuity transitions on the illuminated surfaces.

Looking for dedicated retail lighting? Maxos fusion with OptiSuit offers you a portfolio of seven different light beams. Combined with a choice of lighting colors and lumen packages, this means you can specify Maxos fusion for virtually any and every retail aisle geometry.

The complete OptiSuit™ beam portfolio for retail lighting applications

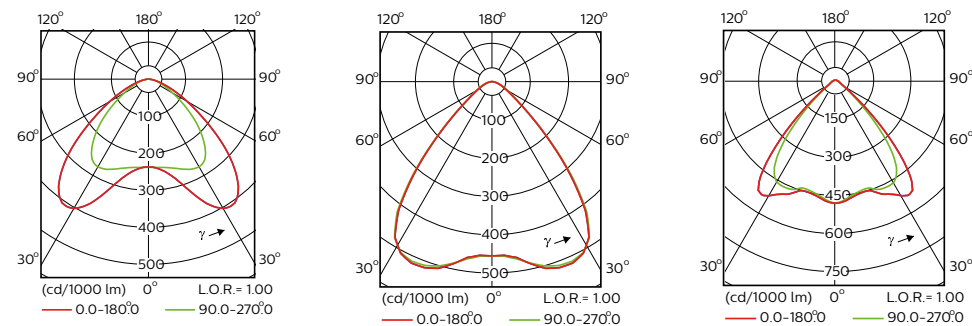


A20 (Asymmetric beam)

DA25N (Double asymmetric Narrow)

DA25W (Double asymmetric Wide)

DA35W (Double asymmetric Wide)

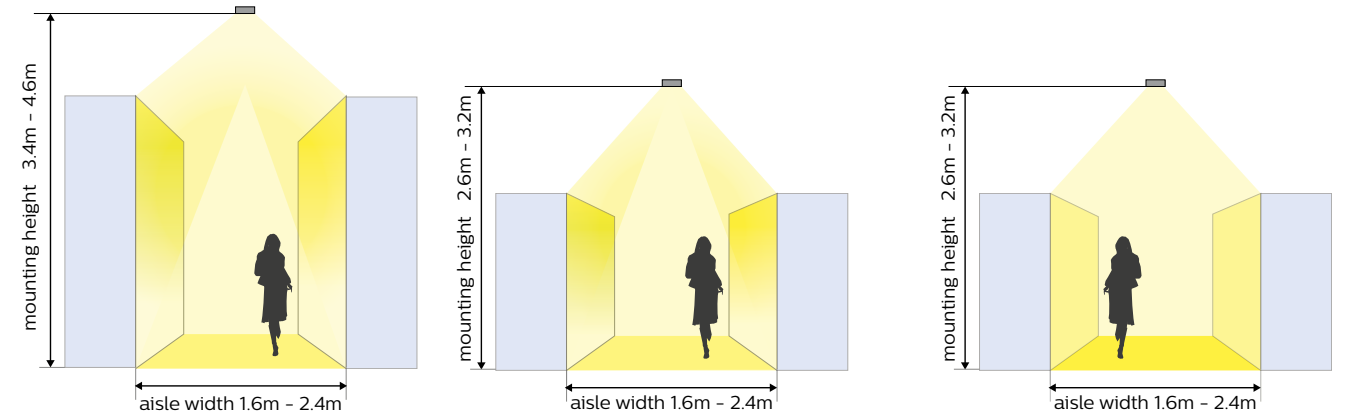


DA45 (Double asymmetric)

WB (Wide beam)

WB-OC (Wide beam - Office compliant)

Retail aisles



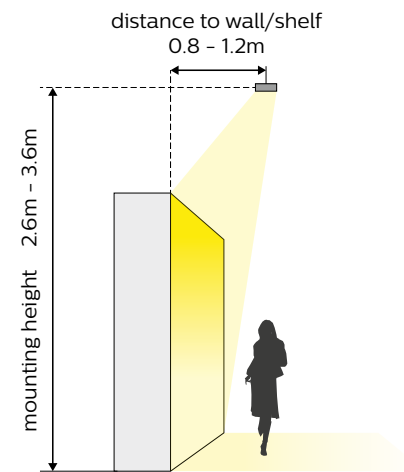
Contrast on vertical shelf

Focus on horizontal illuminance

The balance between contrast on the vertical shelf and horizontal illuminance can be determined by varying the beam choice.

| Recommended optics in retail stores | Aisle width [m] | | | | | Contrast on vertical shelf (h _{shelf} < 2.2m): | Horizontal illuminance |
|-------------------------------------|-----------------|----------------|----------------|------------------|-------------|---|---|
| | 1.6 | 1.8 | 2.0 | 2.2 | 2.4 | | |
| Mounting height [m] | 4.8 | NB | NB | MB | DA25N | DA25N | DA45 ↑ + DA35W DA25W DA25N WB MB NB ↓ - |
| | 3.6 | DA25N WB | DA25N WB | DA25N WB | DA25N | DA25N | |
| | 3.2 | WB | DA25W DA25N WB | DA25W DA25N WB | DA35W DA25N | DA25W DA25N | |
| | 2.8 | DA25W DA25N WB | DA25W DA25N WB | DA45 DA35W DA25W | DA45 DA35W | DA45 DA35W | |
| | 2.6 | DA25W WB | DA35W DA25W WB | DA45 DA35W WB | DA45 | DA45 | |

Retail walls

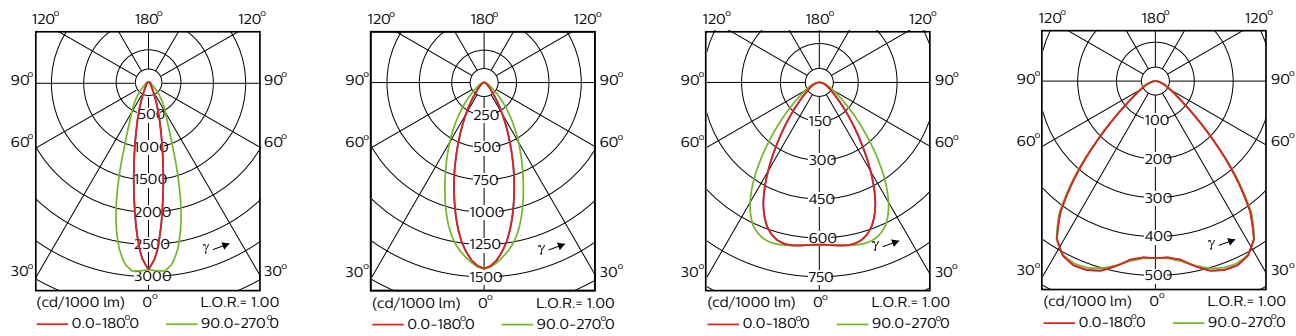


| Recommended optics in retail stores | Aisle width [m] | | | | |
|-------------------------------------|-----------------|-----|-----|-----|-----|
| | 1.6 | 1.8 | 2.0 | 2.2 | 2.4 |
| Mounting height [m] | 3.6 | | | A20 | A20 |
| | 3.4 | | | A20 | A20 |
| | 3.2 | | | A20 | A20 |
| | 3.0 | | | A20 | A20 |
| | 2.8 | A20 | A20 | A20 | A20 |
| 2.6 | A20 | A20 | A20 | A20 | A20 |

*Height of wall is mounting height - 0.5m

The asymmetric OptiSuit™ optic has a very wide application coverage.

The complete OptiSuit™ beam portfolio for industry lighting applications



XNB (Extra narrow beam)

NB (Narrow beam)

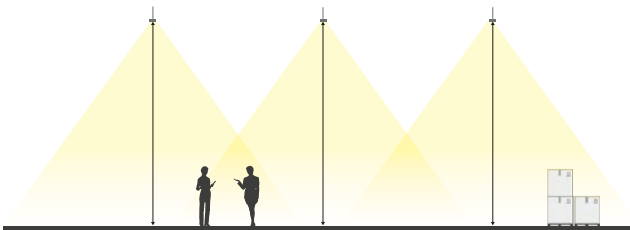
MB (Medium beam)

WB (Wide beam)

For industrial lighting ranges, Optisuit™ offers four suitable beam characteristics, six lumen packages and two energy choices. From a normal downward beam to wide beam options, you can select the right optics and choose how best to install them based on their

light distribution curve. In retail and industry lighting applications, functional lighting for back room offices, control rooms and cash areas that require a low direct glare (UGR 19) can be optimized by specifying the WB-OC optic.

Open spaces

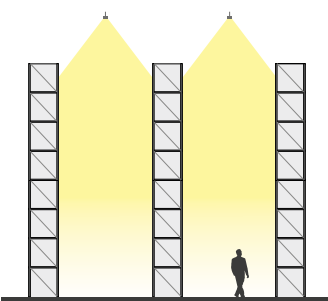


Wide, medium and narrow beam OptiSuit™ optics are recommended for open spaces depending mounting height and required illuminance.

| Illuminance [lux] | Recommended optics in open spaces* | Mounting height of light line [m] | | | | |
|---------------------|------------------------------------|-----------------------------------|----|----|----|----|
| | | 3 | 6 | 9 | 12 | 15 |
| 750 | | WB | MB | MB | NB | NB |
| 500 | | WB | MB | MB | NB | NB |
| 300 | | WB | WB | MB | MB | NB |
| 200 | | WB | WB | WB | MB | NB |

*Depending on space dimensions

Industry warehouses



A combination of wide, medium and narrow beam OptiSuit™ optics are suitable for warehouses.

| Illuminance [lux] | Recommended optics in warehouses* | Mounting height of light line [m] | | | | |
|---------------------|-----------------------------------|-----------------------------------|----|----|----|-----|
| | | 3 | 6 | 9 | 12 | 15 |
| 300 | | WB | MB | NB | NB | XNB |
| 200 | | WB | MB | NB | NB | XNB |
| 150 | | WB | MB | NB | NB | XNB |

*Depending on space dimensions

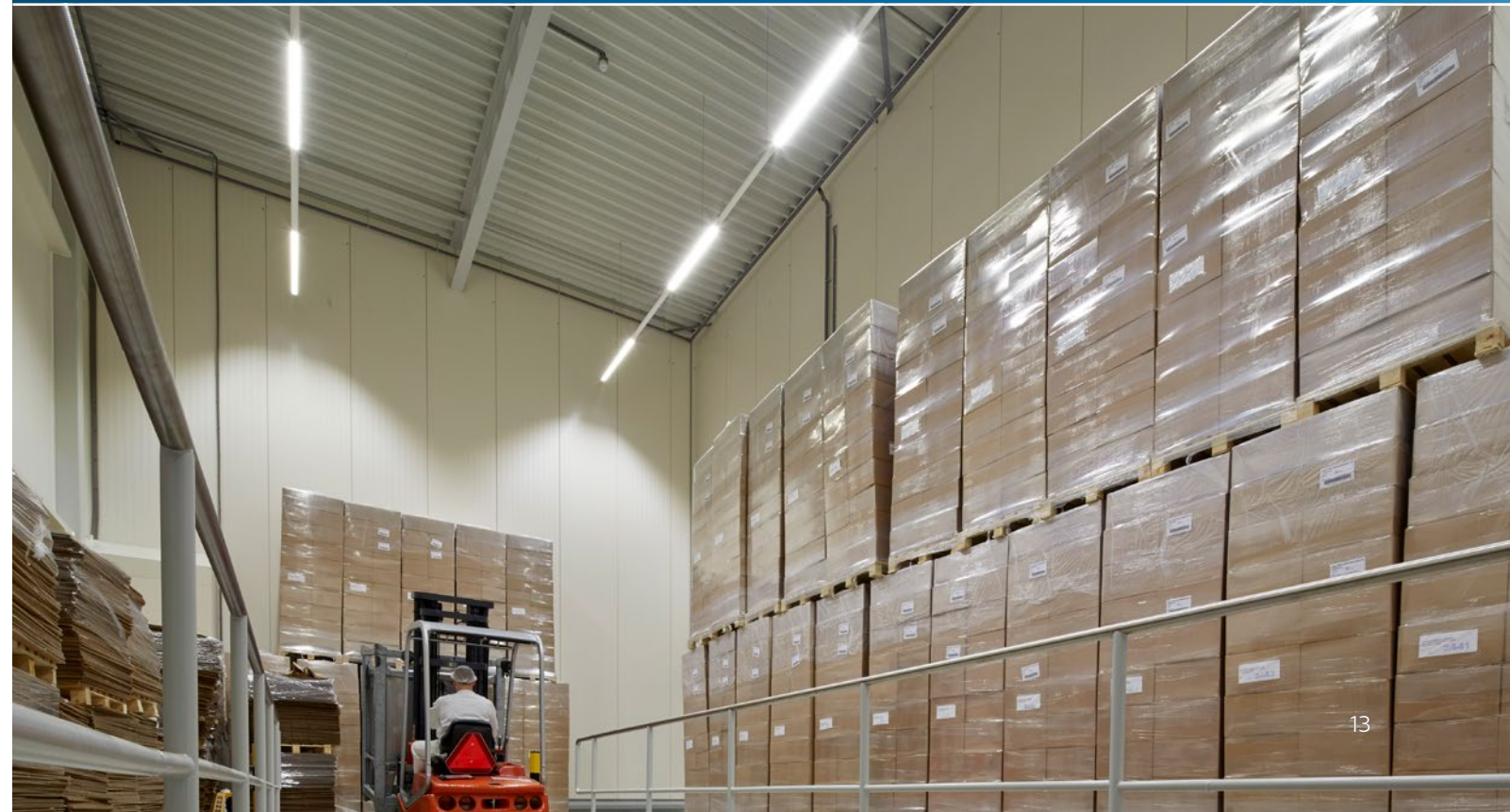
Introducing Maxos fusion XA

Energy consumption will always be a priority for commercial customers. Maxos fusion XA is an economical choice with very high efficacy as one of its many benefits. What's more, with lumen maintenance of 100,000 hours @L80, it offers even more possibilities to optimize your lighting design. For example, not only does the long lifetime enable better planning, extending the maintenance period also promises a more attractive total cost of ownership, which is another key consideration for retail and industrial applications.



Maxos fusion
Industry and retail lighting
Maxos fusion XA

| Specification | | | |
|-------------------------|----------------|-------------------------------|--------------------------------|
| Electrical unit | Efficacy | Lumen depreciation at 50k hrs | Lumen depreciation at 100k hrs |
| LL512X and LL523X | up to 151 lm/W | L80 | |
| LL512X XT and LL523X XT | up to 151 lm/W | | L70 |
| LL512X XA and LL523X XA | up to 185 lm/W | L90 | L80 |



Bringing you benefits with our circular economy approach

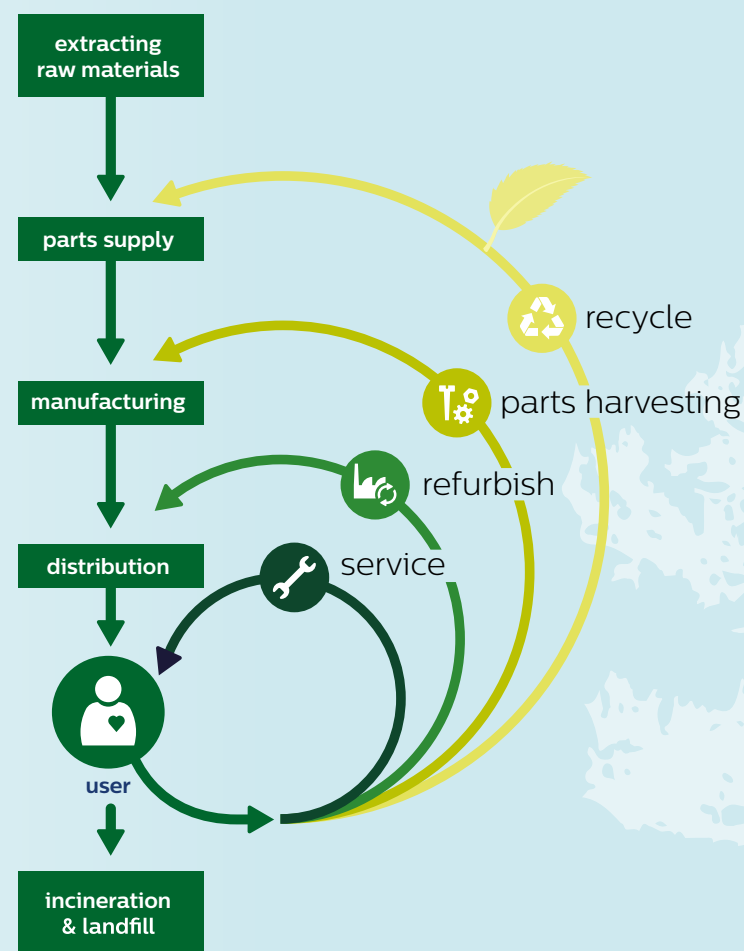


What if...

...we enable your luminaires to meet your evolving needs beyond their rated service life from start to finish – including service and repair, upgrades and replacements – while you just enjoy the best lighting performance?

Because in a truly circular economy, everyone benefits - including our planet itself. And because our purpose is to unlock the extraordinary potential of light for brighter lives and a better world. The circular economy aims to source and use renewable materials in our luminaires and components towards maximum effectiveness, while reducing landfill waste. With this in mind, we join forces with our customers, providing you with energy efficient luminaires and their easy maintenance, repair, upgrades and replacement. Maintenance services are designed to be simple, fast and efficient, saving you time and money. And of course, we provide sophisticated technological upgrades, as and where needed to keep your lighting fit for purpose.

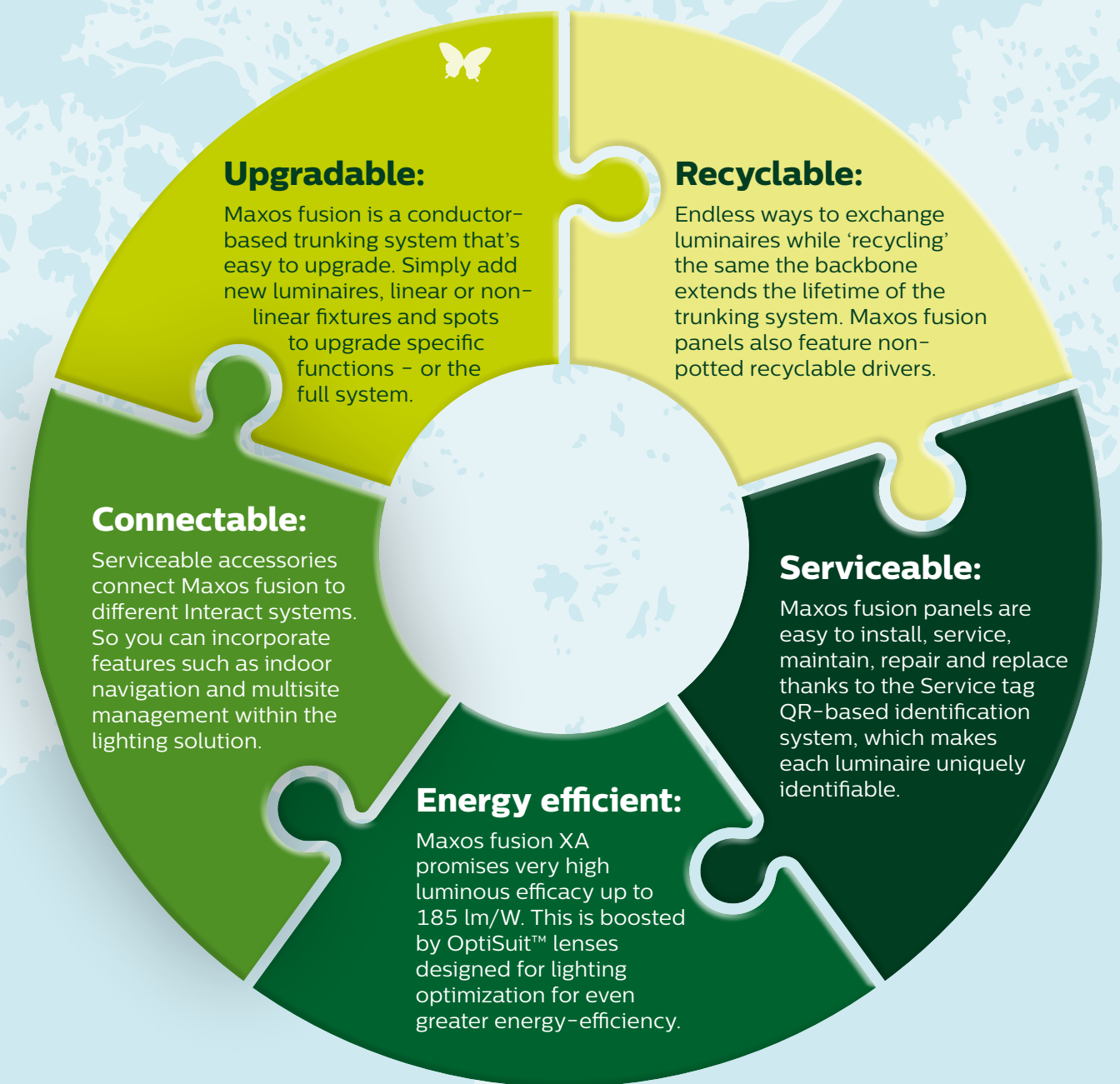
Our circular lighting solutions include innovative managed service models with end-of contract options, intelligent asset management systems and circular economy ready luminaires, guaranteeing optimal performance. We work with partners to ensure collection and recycling of end-of-life components and luminaires. You benefit from immediate cost savings resulting from long-term functionality. Not to mention the least possible environmental impact.



Life Cycle Assessments have been conducted for all Circular Economy ready luminaires

We've designed luminaires for outdoor and indoor use with the circular economy in mind.

Get ready to meet 5 vital benefits for our customers and our planet





Interact Retail propositions

Scene management

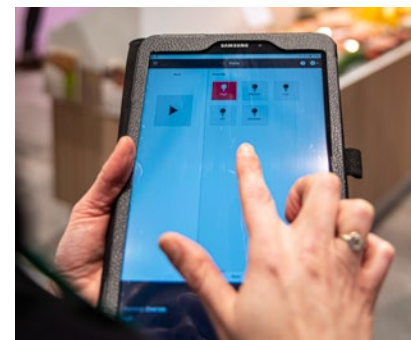
Interact Retail Scene management allows you to create stunning and flexible retail spaces, as you can use light to create a memorable shopping experience. With Interact Retail Scene management you can easily adjust the lighting for different moments of the day, seasons and events to help reinforcing your brand, increasing sales or boosting return visits.

Indoor navigation

Interact Retail Indoor navigation supports personalized, convenient shopping and new staff efficiencies with hyper-accurate indoor positioning powered by technology embedded in LED luminaires. When integrated into a retailer app, it helps shoppers to find products, take advantage of pop-up promotions, or even see recipe suggestions for the ingredients they are about to purchase. For staff, it can help guiding when they are restocking shelves or fulfilling an online order. Interact Retail Indoor navigation can be enabled with Maxos fusion with VLC capabilities.

Multisite management

This extension of Interact Retail provides an intuitive dashboard to monitor and manage your retail spaces. Multisite management creates a network of connected stores, which allows to monitor and manage multiple stores and retail distribution centers remotely from a single dashboard. It gives insights into energy savings and lighting failures and allows managing lighting schedules and scenes for a chain of stores.



Bring your Maxos fusion to the next level with Interact Retail

Interact Retail software applications are specifically designed to bring together connected lighting systems and the data that those systems collect with your other smart retail solutions. These Interact Retail software applications can be integrated with Maxos fusion, to get the most out of your system.

Sensor units

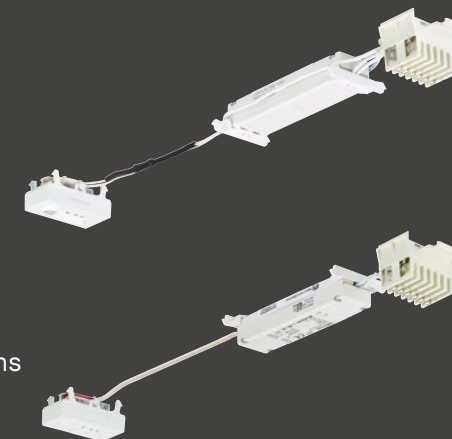
Unlocking the Maxos fusion potential with Interact Retail

Wireless group controller LL500E WGC

- Reduce installation costs, time and complexity
- More individually dimmable groups for granular control

Bluetooth beacon LL500E BTE

- A world of extra possibilities with in-pocket notifications
- Easily plugged into the backbone



interact Industry

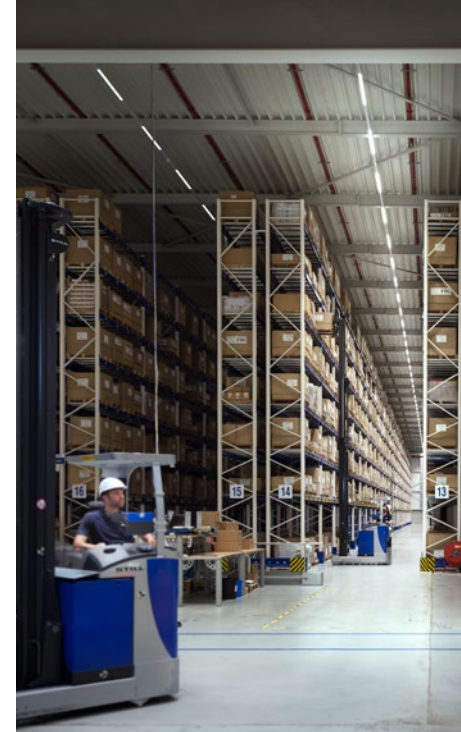
Bring your Maxos fusion to the next level with Interact Industry

All sensor ready Maxos fusion panels are compatible with Interact Industry. Interact Industry provides a platform for innovation that enables users to optimize efficiency, maximize energy savings and improve productivity and safety.

Interact Industry software applications are specifically designed to bring together connected lighting systems and the data that those systems collect with your other smart industry solutions.

The value of connected lighting is extended by Interact Industry, as it provides lighting management

and value-added applications through insights and data. At the same time, the centralized lighting management module helps reducing operational costs, track compliance and plan maintenance efficiently. All combined, this helps you to take real-time, data-based decisions.



GreenWarehouse

GreenWarehouse is a system designed for industry and warehouse facilities of any size and is suitable for both open spaces and racking. With this system, you can personalize your lighting and anticipate and respond to the changing lighting needs of the people using them. This not only can increase productivity, but also improve safety. And, because lighting is only used at the moments when it's needed, you can typically save 50% on

energy costs compared to non-controlled LED installations with fixed output.

In the portfolio of Maxos fusion accessories, GreenWarehouse module is available which enables you to wirelessly control the LED luminaires. As your operation changes during the day for instance, you can create different zones and reconfigure them easily.

- Maxos fusion
- Industry and retail lighting
- Interact**

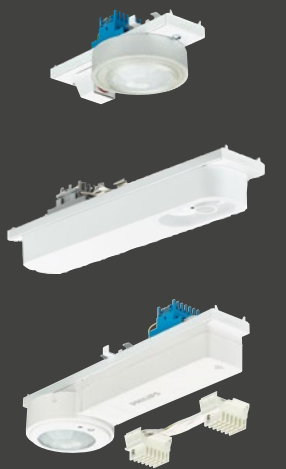
Sensor units

To maximise the potential of system connectivity, all sensor ready Maxos fusion panels are compatible with Interact Industry and GreenWarehouse

Interact Industry LL500E IRE
sensor unit

GreenWarehouse LL500E ACW
sensor unit

LL500E ACW-L
Xtreme HB sensor unit aisle
LL500E ACW-W
Xtreme HB sensor unit area

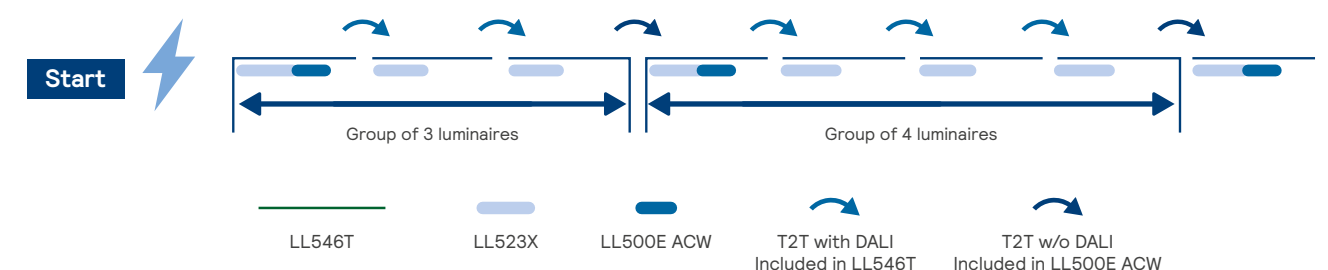


System specifications

So how does it work in practice? The GreenWarehouse sensor is shown in green in the diagram below (LL500E ACW). It communicates with multiple luminaires via the DALI protocol, which is enabled throughout the Maxos fusion trunking.

You can divide the network into zones, grouping luminaires together so they act in exactly the same way. Groups of luminaires can also be defined and controlled by the Track-2-Track (T2T) connectors without a DALI interface (as included in the LL500E ACW).

One sensor can control up to four luminaires, which can be grouped in various ways. This enables you to customize the lighting in an area to create the right lighting scene for its specific use.



Customer stories

Netto 3.0



“

The great advantage of Maxos fusion lighting is not only good lighting quality, but more importantly, energy efficiency and cost effectiveness. In 2020 we are planning on opening over 40 stores in accordance with our 'Netto 3.0' concept using a range of Philips products.”

Wojciech Wolny
Manager at Netto's Technical Department

Netto 3.0

Netto 3.0' is the latest concept of Danish chain store Netto, which has had a presence in the Polish market for the past 24 years. With 380 locations, they are one of the biggest retail brands in Poland and more importantly; they offer a unique concept to their customers with 'Netto 3.0'. Netto stores offer quality products according the latest trends, which come to live in the stores, using background music and the right lighting. The result: a successful and tailored customer experience, perfectly fitting the concept of the stores.

The basis for this lighting solution is a Maxos fusion trunking system that offers unmatched freedom and flexibility. The system comes with the option to integrate nonlinear StoreSet luminaires, linear Maxos fusion modules and StyleID Evo accent lighting. This is particularly important in commercial spaces that need to create attractive product displays to attract customers. The unique ambiance can be further created using a variety of fixtures. Netto chose black trunking lines and fixtures for their stores to create the impression of an elegant interior.

With the Maxos fusion solution at Netto, modern and efficient LED technology is brought into all stores, delivering exactly the right amount of light where it's needed and reducing energy costs by over 50% compared to solutions based on traditional lamps.

“

Thanks to the cooperation with Signify we could fully implement the ideas behind our 'Netto 3.0' concept. In our Gdansk location, we have used high-end lighting products like Maxos fusion designed by Philips and that marks just the beginning of our cooperation.”

Wojciech Wolny
Manager at Netto's Technical Department

Maxos fusion
Industry and retail lighting
Customer stories



Customer stories Velleman



“

Not only us, but also our employees are very satisfied with the result. The excellent light makes a very positive contribution to our employees' productivity.”

Bruno Loosveldt
Logistics manager Velleman

Velleman

Velleman is a Belgian producer and distributor of electronics, operating from their 8,000 m² warehouse in Gavere, Belgium. Here, the old gas discharge lamps were no longer adequate, so the aim was to replace them with a sustainable lighting solution. The aim was to increase light levels in the warehouse to improve visibility and create an attractive working environment, at the same time as delivering significant energy savings. After conducting a test with different providers, Velleman chose the Maxos fusion solution, in combination with GreenWarehouse.

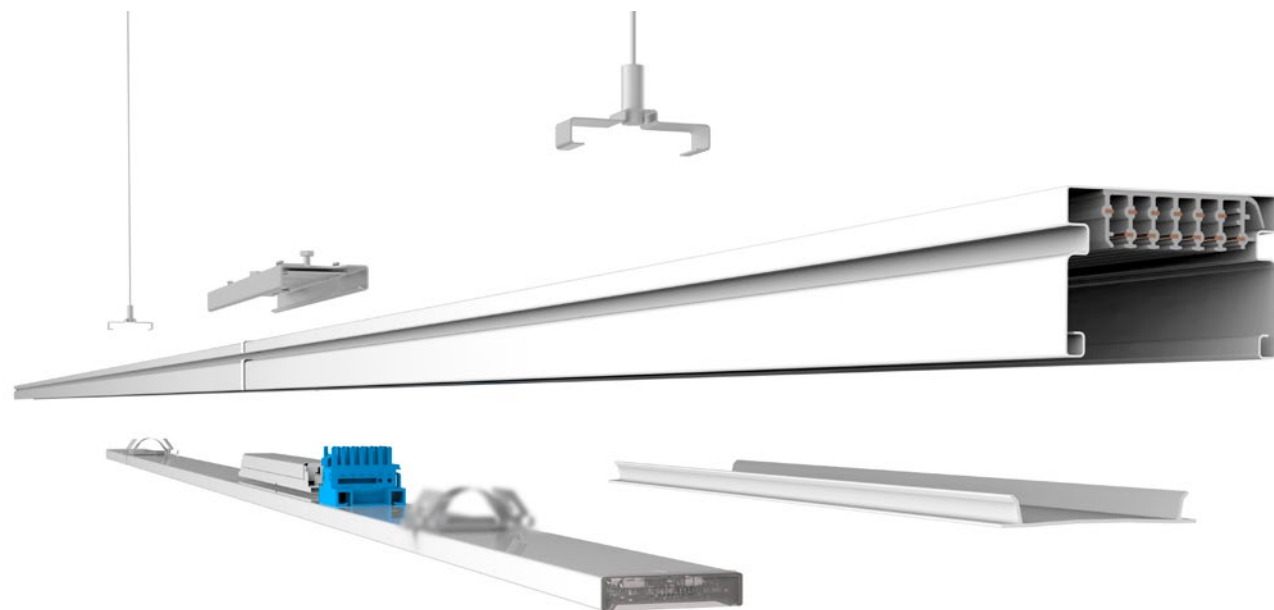
The project was carried out by EnergyVision (Ghent, Belgium), a specialist in energy efficiency and results in these numbers:

- **225 Maxos fusion light lines**, extending to 1.1 kilometers.
- **3 times higher illuminance** at floor level - from 50 lux to 170 lux - meeting international standards.
- **50% energy savings** compared to the original lighting installation, by installing LED-based lighting.
- **20% extra energy savings** by using sensors to switch off the lighting when no one is present.



Components System overview

This diagram provides an overview of the components available for the Maxos fusion trunking system. The vertical columns refer to system configurations. The horizontal columns indicate the choice of specific types of components.



| | | | |
|--|---|---|--|
| SUSPENSION BRACKETS in black, silver and white |  | | |
| TRUNKINGS in black, silver and white | 7 wires  | 9 wires  | 13 wires  |
| PANELS in black, silver and white |  | | |
| ADDITIONAL PRODUCTS in black, silver and white (SPA & SW stainless steel only) |  | | |

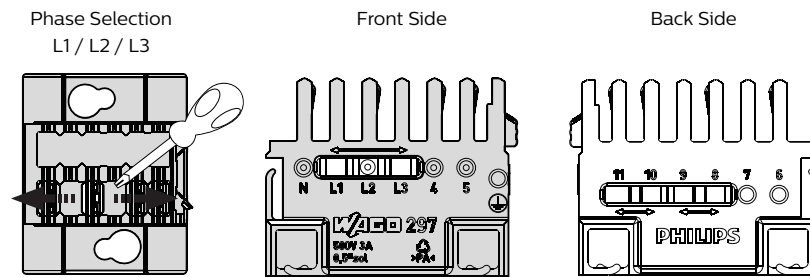
The full range is available in black (BK), silver (SI) and white (WH).

Trunking

| Trunk rail IP20 | | | |
|-----------------|------------|---------|----------------------|
| Family code | Length (m) | Circuit | Color |
| LL512T | 1,15 | 7 | White, WH (RAL9003) |
| LL523T | 2,30 | 9 | Silver, SI (RAL9006) |
| LL546T | 4,60 | 13 | Black, BK (RAL9004) |

| Trunk rail IP54 | | | |
|-----------------|------------|---------|---------------------|
| Family code | Length (m) | Circuit | Color |
| LL623T | 2,30 | 7 | White, WH (RAL9003) |
| | | 9 | |
| LL646T | 4,60 | 13 | |

Wiring selection



| Family code | Front side | | | | | | Back side | | | | | Trunk compatibility | | | | |
|----------------------|------------|---|----|----|----|---------|-----------|---|---|---|---|---------------------|----------------------|-------------|-------------|--------------|
| | PE | N | L1 | L2 | L3 | 4 | 5 | 6 | 7 | 8 | 9 | 10 | 11 | LL...T 7... | LL...T 9... | LL...T 13... |
| PSD7 / SR7 | PE | N | ← | L | → | DA+/SR+ | DA-/SR- | | | | | | | ✓ | ✓ | ✓ |
| PSD13 ELP / SR13 ELP | PE | N | ← | L | → | DA+/SR+ | DA-/SR- | | | | | | LL / NN ** | ✗ | ✓*** | ✓ |
| PSD13 ELD / SR13 ELD | PE | N | ← | L | → | DA+/SR+ | DA-/SR- | | | | | | LL, NN / DA+, DA- ** | ✗ | ✗ | ✓ |
| PSED7 / SRED7 | PE | N | ← | L | → | DA+/SR+ | DA-/SR- | | | | | | | ✓ | ✓ | ✓ |
| PSED13 / SRED13 | PE | * | ← | L | → | DA+/SR+ | DA-/SR- | | | | | * | | ✗ | ✓**** | ✓ |

* Wires to be connected by installer (available PINs: N, L1-L3, 6-11)
 ** Wires to be connected by installer (available PINs: 6-11)
 *** Emergency lines NN, LL can be connected to 6 and 7 only
 **** Available lines in the trunk (N, L1-L3, 4, 5, 6, 7)

Electrical units

| Linear panel IP20' | | | | | | | | | |
|--------------------|----------|-----------------------|------------------|--------|----------|---------|--------------------|----------------|---|
| Family code | Versions | Luminous flux (lumen) | Light color code | Driver | Controls | Optics | Emergency lighting | Circuit option | Color finishing |
| LL512X | Standard | 3100 | 830 | PSD | CLO | WB | | 13 | White WH (RAL9003) Silver SI (RAL9006) Black BK (RAL9004) |
| | XT | 5000 | 835 | PSED | VLC | WB-OC** | | | |
| | XA | 6150 | 840 | SRD | | MB | | | |
| | | 8000 | 850 | SRED | | NB | | | |
| | | | 865 | | | XNB | | | |
| LL523X | | 6200 | 940 | | | | ELP3 ELD3 | | |
| | | 10100 | | | | DA25N | | | |
| | | 12300 | | | | DA25W | | | |
| | | 16000 | | | | DA35W | | | |
| | | | | | | DA45 | | | |
| | | | | | | A20 | | | |
| | | | | | | PCO | | | |

CLO = Constant Light Output
 VLC = Visual Light Communication (indoor navigation, Yellow Dot compliant)
 PSD = Power supply DALI
 PSED = designed for central emergency lighting
 SRD = Sensor ready driver
 SRED = Sensor ready emergency driver
 ELP3 = Pro version (standard emergency)
 ELD3 = DALI feedback
 EL.3 = 3hrs 300lm
 XT = Extreme (100 khrs @ L70)
 XA = Xtra (up to 185 lm/W and 100 khrs @ L80)
 * = Please contact Signify representatives for specific configurations
 ** = for lowest lumen per length

| Linear panel IP54 | | | | | | | | | |
|-------------------|------------------------|------------------|--------|----------|-----------|--------------------|----------------|--------------------|--|
| Family code | Luminous flux (lumen)* | Light color code | Driver | Controls | Optics | Emergency lighting | Circuit option | Color finishing | |
| LL612X | 3100 | 830 | PSD | CLO | WB | | 7 13 | White WH (RAL9003) | |
| | 5000 | 840 | PSED | | MB | | | | |
| | 6150 | | | | NB XNB | | | | |
| LL623X | 6200 | | | | | ELP3 ELD3 | | | |
| | 10100 | | | | | | | | |
| | 12300 | | | | | | | | |

CLO = Constant Light Output
 PSED = designed for central emergency lighting
 ELP3 = Pro version (standard emergency)
 ELD3 = DALI feedback
 EL.3 = 3hrs 300lm
 * = due to IP54 up to 10% less

Visit the Maxos fusion **online configurator**



Maxos fusion with GreenSpace Accent Projector



Maxos fusion
Industry and retail lighting
Range overview

Associated family products

StyliD Evo



StyliD Evo compact



StyliD Evo without driverbox



StyliD Evo performance

| StyliD Evo | | | | | |
|--|-----------------------|------------------|---|---|------------------------|
| | Lumen package | Light color code | Beam | Driver | Color finishing |
| StyliD Evo Compact (with driverbox) (ST770S) | 1700 | 827 | Narrow (10°) Medium (24°) Wide (36°) Very Wide (60°) Oval-horizontal Oval-vertical | PSU (Power supply unit) | White WH (RAL9003) |
| | 2700 | 830 | | | |
| | 3900 | 840 | | | |
| StyliD Evo Compact (without driverbox) (ST7nnX) | 4900 | 930 | Premium White 930 Premium Color 930 Champagne Rose FreshMeat Frost | PSD (DALI driver) | Silver SI (RAL9006) |
| | | | | | |
| StyliD Evo Performance (with driverbox) (ST8nnX) | 6000 (only ST780S) | | | PSD VLC (DALI driver with VLC enabled) Not for ST770X | Black BK (RAL9004) |

VLC: Visual Light Communication

StoreSet



| StoreSet | | | |
|-----------------------|--------------------------|---|-------------------------------------|
| Luminous flux (lumen) | Efficacy | Driver | Optics |
| 600 8000 9000 | SM505X up to 143 lm/W | PSU (Power supply unit) | A20 DA25N DA25W DA45 WB |
| | SM505X XA up to 171 lm/W | PSD VLC DALI driver VLC enabled) (not for ST770X) | |
| | | PSD VLC CLO (DALI driver VLC and CLO enabled) | |

VLC: Visual Light Communication
CLO: Constant Light Output

Ordering information*

Maxos fusion

Industry and retail lighting

Ordering information

| Maxos fusion IP20 | | | | | | | | |
|-------------------|--------------|--------|---------------|--------|--------|-------------------------------------|--|-----------------------------------|
| Line length [m] | Linear panel | | Trunking rail | | | Mounting and electrical accessories | | |
| | LL512X | LL523X | LL512T | LL523T | LL546T | LL500Z CPE | LL500Z CB or LL500Z MB-SW | LL500Z 2xEP CU |
| Unit length | 1.138m | 2.276m | 1.138m | 2.276m | 4.552m | Coupling Piece External | Chain bracket or Mounting bracket with wire* | End piece including coupling unit |
| 1.15 | 1 | | 1 | | | | 2 | 1 |
| 2.30 | | 1 | | 1 | | | 2 | 1 |
| 3.45 | 1 | 1 | 1 | 1 | | 1 | 3 | 1 |
| 4.55 | | 2 | | | 1 | | 2 | 1 |
| 5.75 | 1 | 2 | 1 | | 1 | 1 | 3 | 1 |
| 6.90 | | 3 | | 1 | 1 | 1 | 3 | 1 |
| 8.05 | 1 | 3 | 1 | 1 | 1 | 2 | 4 | 1 |
| 9.20 | | 4 | | | 2 | 1 | 3 | 1 |
| 10.35 | 1 | 4 | 1 | | 2 | 2 | 4 | 1 |
| 11.50 | | 5 | | 1 | 2 | 2 | 4 | 1 |
| 12.65 | 1 | 5 | 1 | 1 | 2 | 3 | 5 | 1 |
| 13.80 | | 6 | | | 3 | 2 | 4 | 1 |
| 14.95 | 1 | 6 | 1 | | 3 | 3 | 5 | 1 |
| 16.10 | | 7 | | 1 | 3 | 3 | 5 | 1 |
| 17.25 | 1 | 7 | 1 | 1 | 3 | 4 | 6 | 1 |
| 18.40 | | 8 | | | 4 | 3 | 5 | 1 |
| 19.55 | 1 | 8 | 1 | | 4 | 4 | 6 | 1 |
| 20.70 | | 9 | | 1 | 4 | 4 | 6 | 1 |
| 21.85 | 1 | 9 | 1 | 1 | 4 | 5 | 7 | 1 |
| 23.00 | | 10 | | | 5 | 4 | 6 | 1 |
| 24.15 | 1 | 10 | 1 | | 5 | 5 | 7 | 1 |
| 25.30 | | 11 | | 1 | 5 | 5 | 7 | 1 |
| 26.45 | 1 | 11 | 1 | 1 | 5 | 6 | 8 | 1 |
| 27.60 | | 12 | | | 6 | 5 | 7 | 1 |
| 29.90 | | 13 | | 1 | 6 | 6 | 8 | 1 |
| 32.20 | | 14 | | | 7 | 6 | 8 | 1 |
| 34.50 | | 15 | | 1 | 7 | 7 | 9 | 1 |
| 36.80 | | 16 | | | 8 | 7 | 9 | 1 |
| 39.10 | | 17 | | 1 | 8 | 8 | 10 | 1 |
| 41.40 | | 18 | | | 8 | 7 | 9 | 1 |
| 43.70 | | 19 | | 1 | 9 | 9 | 11 | 1 |
| 46.00 | | 20 | | | 9 | 8 | 10 | 1 |

* Assumptions:

- Line is assumed to be fully occupied only with Maxos fusion panels.
- The starter kit for side entry (LL500Z 2x EP CU WH) is the default assumed feed in connection
- The default MCB consideration is Type B 16A
- The voltage drop from mains supply to beginning of light line is not considered
- The voltage drop over the trunking should not exceed 5%.
- The starter kit for mid entry (LL500Z CM) doubles the maximum trunking length
- Ask the installer for advice when the trunking line exceeds 120 m (B-16 A).
- For additional configurations such as semi-continuous line, please contact your Philips representative.

| Maxos fusion IP20 | | | | | | | | |
|-------------------|--------------|--------|---------------|--------|--------|-------------------------------------|--|-----------------------------------|
| Line length [m] | Linear panel | | Trunking rail | | | Mounting and electrical accessories | | |
| | LL512X | LL523X | LL512T | LL523T | LL546T | LL500Z CPE | LL500Z CB or LL500Z MB-SW | LL500Z 2xEP CU |
| Unit length | 1.138m | 2.276m | 1.138m | 2.276m | 4.552m | Coupling Piece External | Chain bracket or Mounting bracket with wire* | End piece including coupling unit |
| 48.30 | | 21 | | 1 | 10 | 10 | 12 | 1 |
| 50.60 | | 22 | | | 10 | 9 | 11 | 1 |
| 52.90 | | 23 | | 1 | 10 | 10 | 12 | 1 |
| 55.20 | | 24 | | | 11 | 10 | 12 | 1 |
| 57.50 | | 25 | | 1 | 11 | 11 | 13 | 1 |
| 59.80 | | 26 | | | 12 | 11 | 13 | 1 |
| 62.10 | | 27 | | 1 | 12 | 12 | 14 | 1 |
| 64.40 | | 28 | | | 12 | 11 | 13 | 1 |
| 66.70 | | 29 | | 1 | 13 | 13 | 15 | 1 |
| 69.00 | | 30 | | | 13 | 12 | 14 | 1 |
| 71.30 | | 31 | | 1 | 14 | 14 | 16 | 1 |
| 73.60 | | 32 | | | 14 | 13 | 15 | 1 |
| 75.90 | | 33 | | 1 | 14 | 14 | 16 | 1 |
| 78.20 | | 34 | | | 15 | 14 | 16 | 1 |
| 80.50 | | 35 | | 1 | 15 | 15 | 17 | 1 |
| 82.80 | | 36 | | | 16 | 15 | 17 | 1 |
| 85.10 | | 37 | | 1 | 16 | 16 | 18 | 1 |
| 87.40 | | 38 | | | 16 | 15 | 17 | 1 |
| 89.70 | | 39 | | 1 | 17 | 17 | 19 | 1 |
| 92.00 | | 40 | | | 17 | 16 | 18 | 1 |
| 94.30 | | 41 | | 1 | 18 | 18 | 20 | 1 |
| 96.60 | | 42 | | | 18 | 17 | 19 | 1 |
| 98.90 | | 43 | | 1 | 18 | 18 | 20 | 1 |
| 101.20 | | 44 | | | 19 | 18 | 20 | 1 |
| 103.50 | | 45 | | 1 | 19 | 19 | 21 | 1 |
| 105.80 | | 46 | | | 20 | 19 | 21 | 1 |
| 108.10 | | 47 | | 1 | 20 | 20 | 22 | 1 |
| 110.40 | | 48 | | | 20 | 19 | 21 | 1 |
| 112.70 | | 49 | | 1 | 21 | 21 | 23 | 1 |
| 115.00 | | 50 | | | 21 | 20 | 22 | 1 |
| 117.30 | | 51 | | 1 | 22 | 22 | 24 | 1 |
| 119.60 | | 52 | | | 22 | 21 | 23 | 1 |

* Assumptions:

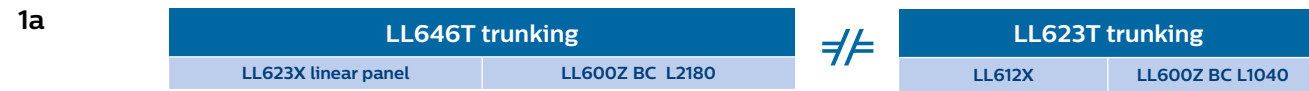
- Line is assumed to be fully occupied only with Maxos fusion panels.
- The starter kit for side entry (LL500Z 2x EP CU WH) is the default assumed feed in connection
- The default MCB consideration is Type B 16A
- The voltage drop from mains supply to beginning of light line is not considered
- The voltage drop over the trunking should not exceed 5%.
- The starter kit for mid entry (LL500Z CM) doubles the maximum trunking length
- Ask the installer for advice when the trunking line exceeds 120 m (B-16 A).
- For additional configurations such as semi-continuous line, please contact your Philips representative.

IP54 configurations options.
Please contact us for more information and alternatives.

Maxos fusion
.....
Industry and
retail lighting
.....
**Ordering
information**
.....

Option 1

This line starts with a linear panel IP54 and alternates with IP54 blind covers.
Trunking LL646T and LL623T can be combined in one line



| Length trunking line (m) | Trunking unit | | Linear panel | | Blind covers LL600Z BC | | | | Required accessories | | |
|--------------------------|---------------|--------|--------------|--------|------------------------------|-------|-------|-------|----------------------|----------------------|----------------|
| | LL623T | LL646T | LL612X | LL623X | L520 | L1040 | L1090 | L2180 | LL500Z CPE | LL500Z CB-CH / MB-SW | LL500Z 2xEP CU |
| 2,30 | 1 | | 1 | | | 1 | | | | 2 | 1 |
| 4,60 | | 1 | | 1 | | | | 1 | | 2 | 1 |
| 6,90 | 1 | 1 | 1 | 1 | | 1 | | 1 | 1 | 3 | 1 |
| 9,20 | | 2 | | 2 | | | | 2 | 1 | 3 | 1 |
| 11,50 | 1 | 2 | 1 | 2 | | 1 | | 2 | 2 | 4 | 1 |
| 13,80 | | 3 | | 3 | | | | 3 | 2 | 4 | 1 |
| 16,10 | 1 | 3 | 1 | 3 | | 1 | | 3 | 3 | 5 | 1 |
| 18,40 | | 4 | | 4 | | | | 4 | 3 | 5 | 1 |
| 20,70 | 1 | 4 | 1 | 4 | | 1 | | 4 | 4 | 6 | 1 |
| 23,00 | | 5 | | 5 | | | | 5 | 4 | 6 | 1 |
| 25,30 | 1 | 5 | 1 | 5 | | 1 | | 5 | 5 | 7 | 1 |



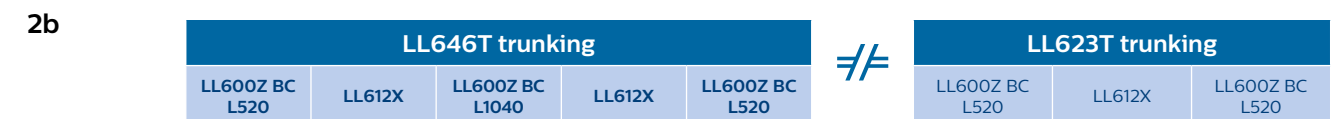
| Length trunking line (m) | Trunking unit | | Linear panel | | Blind covers LL600Z BC | | | | Required accessories | | |
|--------------------------|---------------|--------|--------------|--------|------------------------------|-------|-------|-------|----------------------|----------------------|----------------|
| | LL623T | LL646T | LL612X | LL623X | L520 | L1040 | L1090 | L2180 | LL500Z CPE | LL500Z CB-CH / MB-SW | LL500Z 2xEP CU |
| 2,30 | 1 | | 1 | | | 1 | | | | 2 | 1 |
| 4,60 | | 1 | 2 | | | 2 | | | | 2 | 1 |
| 6,90 | 1 | 1 | 3 | | | 3 | | | 1 | 3 | 1 |
| 9,20 | | 2 | 4 | | | 4 | | | 1 | 3 | 1 |
| 11,50 | 1 | 2 | 5 | | | 5 | | | 2 | 4 | 1 |
| 13,80 | | 3 | 6 | | | 6 | | | 2 | 4 | 1 |
| 16,10 | 1 | 3 | 7 | | | 7 | | | 3 | 5 | 1 |
| 18,40 | | 4 | 8 | | | 8 | | | 3 | 5 | 1 |
| 20,70 | 1 | 4 | 9 | | | 9 | | | 4 | 6 | 1 |
| 23,00 | | 5 | 10 | | | 10 | | | 4 | 6 | 1 |
| 25,30 | 1 | 5 | 11 | | | 11 | | | 5 | 7 | 1 |

Option 2

This line starts with an IP54 blind cover and alternates with IP54 linear panels.
Trunking LL646T and LL623T can be combined in one line



| Length trunking line (m) | Trunking unit | | Linear panel | | Blind covers LL600Z BC | | | | Required accessories | | |
|--------------------------|---------------|--------|--------------|--------|------------------------------|-------|-------|-------|----------------------|----------------------|----------------|
| | LL623T | LL646T | LL612X | LL623X | L520 | L1040 | L1090 | L2180 | LL500Z CPE | LL500Z CB-CH / MB-SW | LL500Z 2xEP CU |
| 4,60 | | 1 | | 1 | | | 2 | | | 2 | 1 |
| 9,20 | | 2 | | 2 | | | 2 | 1 | 1 | 3 | 1 |
| 13,80 | | 3 | | 3 | | | 2 | 2 | 2 | 4 | 1 |
| 18,40 | | 4 | | 4 | | | 2 | 3 | 3 | 5 | 1 |
| 23,00 | | 5 | | 5 | | | 2 | 4 | 4 | 6 | 1 |



| Length trunking line (m) | Trunking unit | | Linear panel | | Blind covers LL600Z BC | | | | Required accessories | | |
|--------------------------|---------------|--------|--------------|--------|------------------------------|-------|-------|-------|----------------------|----------------------|----------------|
| | LL623T | LL646T | LL612X | LL623X | L520 | L1040 | L1090 | L2180 | LL500Z CPE | LL500Z CB-CH / MB-SW | LL500Z 2xEP CU |
| 2,30 | 1 | | 1 | | 2 | | | | | 2 | 1 |
| 4,60 | | 1 | 2 | | 2 | 1 | | | | 2 | 1 |
| 6,90 | 1 | 1 | 3 | | 2 | 2 | | | 1 | 3 | 1 |
| 9,20 | | 2 | 4 | | 2 | 3 | | | 1 | 3 | 1 |
| 11,50 | 1 | 2 | 5 | | 2 | 4 | | | 2 | 4 | 1 |
| 13,80 | | 3 | 6 | | 2 | 5 | | | 2 | 4 | 1 |
| 16,10 | 1 | 3 | 7 | | 2 | 6 | | | 3 | 5 | 1 |
| 18,40 | | 4 | 8 | | 2 | 7 | | | 3 | 5 | 1 |
| 20,70 | 1 | 4 | 9 | | 2 | 8 | | | 4 | 6 | 1 |
| 23,00 | | 5 | 10 | | 2 | 9 | | | 4 | 6 | 1 |
| 25,30 | 1 | 5 | 11 | | 2 | 10 | | | 5 | 7 | 1 |

Ordering information and European Ordering Codes

Maxos fusion

Industry and
retail lighting

Ordering
information

Below are standard codes, other options are configurable;
please contact your local Signify representative

| Trunk rail | |
|----------------|-----------------|
| Trunkings IP20 | EOC |
| LL512T 7 WH | 871869639736799 |
| LL512T 7 SI | 871869639742899 |
| LL512T 7 BK | 871869639748099 |
| LL523T 7 WH | 871869639738199 |
| LL523T 7 SI | 871869639744299 |
| LL523T 7 BK | 871869639750399 |
| LL546T 7 BK | 871869639752799 |
| LL546T 7 WH | 871869639740499 |
| LL546T 7 SI | 871869639746699 |
| LL512T 9 WH | 871869943447299 |
| LL512T 9 SI | 871869943450299 |
| LL512T 9 BK | 871869943453399 |
| LL523T 9 WH | 871869943448999 |
| LL523T 9 SI | 871869943451999 |
| LL523T 9 BK | 871869943454099 |
| LL546T 9 WH | 871869943449699 |
| LL546T 9 SI | 871869943452699 |
| LL546T 9 BK | 871869943455799 |
| LL512T 13 WH | 871869639737499 |
| LL512T 13 SI | 871869639743599 |
| LL512T 13 BK | 871869639749799 |
| LL523T 13 WH | 871869639739899 |
| LL523T 13 SI | 871869639745999 |
| LL523T 13 BK | 871869639751099 |
| LL546T 13 WH | 871869639741199 |
| LL546T 13 SI | 871869639747399 |
| LL546T 13 BK | 871869639753499 |

| Trunkings IP54 | EOC |
|----------------|-----------------|
| LL623T 7 WH | 871869639757299 |
| LL646T 7 WH | 871869639759699 |
| LL623T 9 WH | 871869943456499 |
| LL646T 9 WH | 871869943457199 |
| LL623T 13 WH | 871869639758999 |
| LL646T 13 WH | 871869639755899 |

| Linear panels | |
|---------------------------------------|-----------------|
| Linear panels IP20 | EOC |
| LL512X LED31S/830 PSD DA25N 7 WH | 871869941833500 |
| LL512X LED31S/830 PSD MB 7 BK | 871869934539600 |
| LL512X LED31S/840 PSD NB 7 VLC WH | 871869698453600 |
| LL512X LED31S/840 PSD NB 7 VLC SI | 871869699328600 |
| LL512X LED31S/840 PSD WB 7 VLC SI | 871869699333000 |
| LL512X LED31S/865 PSD WB 7 WH | 871869941578500 |
| LL512X LED31S/850 PSD WB 7 WH | 871869934213500 |
| LL512X LED31S/840 PSED PCO 13 WH | 871869698329400 |
| LL512X LED31S/840 PSED WB 13 WH | 871869698330000 |
| LL512X LED31S/840 PSED WB 7 WH | 871869638426800 |
| LL512X LED31S/840 PSD DA25W 7 WH | 871869638447300 |
| LL512X LED31S/840 PSD WB 7 VLC SI | 871869699337800 |
| LL512X LED31S/840 PSD PCO 7 WH | 871869638411400 |
| LL512X LED31S/840 PSED PCO 7 WH | 871869638417600 |
| LL512X LED31S/840 PSD WB 7 WH | 871869638420600 |
| LL512X LED31S/840 PSD MB 7 WH | 871869638429900 |
| LL512X LED31S/840 PSD NB 7 WH | 871869638435000 |
| LL512X LED31S/840 PSD DA35W 7 WH | 871869638441100 |
| LL512X LED31S/840 PSD DA25N 7 WH | 871869638453400 |
| LL512X LED31S/840 PSD A20 7 WH | 871869638459600 |
| LL512X LED31S/840 PSD WB 7 SI | 871869638465700 |
| LL512X LED31S/840 PSD WB 7 BK | 871869638471800 |
| LL512X LED42S/840 PSU WB 7 WH | 871869698666000 |
| LL512X LED42S/840 PSU PCO 7 WH | 871869699562400 |
| LL512X LED50S/830 PSD DA25W 7 WH | 871869941832800 |
| LL512X LED50S/830 PSD DA45W 7 VLC WH | 871869941955400 |
| LL512X LED50S/840 PSD WB 7 VLC WH | 871869698041500 |
| LL512X LED50S/830 PSD WB 7 VLC WH | 871869941956100 |
| LL512X LED50S/830 PSD DA25W 7 VLC BK | 871869934272200 |
| LL512X LED50S/830 PSD A20 7 VLC BK | 871869934273900 |
| LL512X LED50S/830 PSD WB 7 WH | 871869698395900 |
| LL512X LED50S/840 PSD MB 7 SI | 871869698287700 |
| LL512X LED50S/840 PSD A20 7 BK | 871869698318800 |
| LL512X LED50S/840 PSD WB 7 CLO-VLC WH | 871869698621900 |
| LL512X LED50S/840 PSD DA25N 7 VLC SI | 871869699330900 |
| LL512X LED50S/840 PSD DA45W 7 VLC SI | 871869699332300 |
| LL512X LED50S/840 PSD WB 13 WH 2N | 871869923134700 |
| LL512X LED50S/840 PSD WB 7 VLC SI | 871869699336100 |
| LL512X LED50S/840 PSD A20 7 VLC WH | 871869942100700 |
| LL512X LED50S/840 PSD PCO 7 WH | 871869638412100 |
| LL512X LED50S/840 PSED PCO 7 WH | 871869638418300 |
| LL512X LED50S/840 PSD WB 7 WH | 871869638421300 |
| LL512X LED50S/840 PSED WB 7 WH | 871869638427500 |
| LL512X LED50S/840 PSD MB 7 WH | 871869638430500 |
| LL512X LED50S/840 PSD NB 7 WH | 871869638436700 |
| LL512X LED50S/840 PSD DA35W 7 WH | 871869638442800 |
| LL512X LED50S/840 PSD DA25W 7 WH | 871869638448000 |
| LL512X LED50S/840 PSD DA25N 7 WH | 871869638454100 |
| LL512X LED50S/840 PSD A20 7 WH | 871869638460200 |
| LL512X LED50S/840 PSD WB 7 SI | 871869638466400 |

| Linear panels | |
|---------------------------------------|-----------------|
| Linear panels IP20 | EOC |
| LL512X LED50S/840 PSD WB 7 BK | 871869638472500 |
| LL512X LED50S/835 PSD WB 7 WH | 871869698725400 |
| LL512X LED61S/830 PSD WB 7 WH | 871869933221100 |
| LL512X LED61S/830 PSD DA25N 7 WH | 871869933223500 |
| LL512X LED61S/830 PSD A20 7 WH | 871869933225900 |
| LL512X LED61S/865 PSD DA25N 7 WH | 871869933310200 |
| LL512X LED61S/830 PSD DA25W 7 WH | 871869941764200 |
| LL512X LED61S/830 PSD WB 7 VLC WH | 871869941957800 |
| LL512X LED61S/840 PSD WB 7 VLC WH | 871869698100900 |
| LL512X LED61S/840 PSD MB 7 VLC WH | 871869698101600 |
| LL512X LED61S/840 PSD MB 7 CLO-VLC WH | 871869698256300 |
| LL512X LED61S/840 PSD A20 7 VLC BK | 871869698258700 |
| LL512X LED61S/840 PSD WB 7 WH | 871869698262400 |
| LL512X LED61S/840 PSED DA25W 7 BK | 871869698588500 |
| LL512X LED61S/840 PSD DA25W 7 VLC WH | 871869699306400 |
| LL512X LED61S/840 PSD A20 7 BK | 871869699436800 |
| LL512X LED61S/840 PSD WB 7 CLO-VLC WH | 871869699456600 |
| LL512X LED61S/840 PSD A20 7 VLC WH | 871869942026000 |
| LL512X LED61S/840 PSD PCO 7 WH | 871869638413800 |
| LL512X LED61S/840 PSED PCO 7 WH | 871869638419000 |
| LL512X LED61S/840 PSD WB 7 WH | 871869638422000 |
| LL512X LED61S/840 PSED WB 7 WH | 871869638428200 |
| LL512X LED61S/840 PSD MB 7 WH | 871869638431200 |
| LL512X LED61S/840 PSD NB 7 WH | 871869638437400 |
| LL512X LED61S/840 PSD DA35W 7 WH | 871869638443500 |
| LL512X LED61S/840 PSED WB 13 WH | 871869698331700 |
| LL512X LED61S/840 PSED WB 13 VLC WH | 871869698422200 |
| LL512X LED61S/840 PSD DA25W 7 WH | 871869638449700 |
| LL512X LED61S/840 PSD DA25N 7 WH | 871869638455800 |
| LL512X LED61S/840 PSD A20 7 WH | 871869638461900 |
| LL512X LED61S/840 PSD WB 7 SI | 871869638467100 |
| LL512X LED61S/840 PSD WB 7 BK | 871869638473200 |
| LL512X LED61S/840 PSD XNB 7 WH XT | 871869698727800 |
| LL523X LED62S/840 PSD WB 7 VLC WH | 871869698098900 |
| LL523X LED62S/830 PSD WB 7 VLC WH | 871869698392800 |
| LL523X LED62S/840 PSD WB 7 CLO-VLC WH | 871869698620200 |
| LL523X LED62S/850 PSD WB 7 WH | 871869941509900 |
| LL523X LED62S/840 PSD WB 7 ELP1 WHL3 | 871869699048300 |
| LL523X LED62S/830 PSD MB 7 BK | 871869934538900 |
| LL523X LED62S/830 PSD DA25N 7 WH | 871869941834200 |
| LL523X LED62S/840 PSD WB 13 ELD3 WH | 871869941835900 |
| LL523X LED62S/840 PSD WB 13 ELD1 WH | 871869698119100 |
| LL523X LED62S/840 PSED WB 13 VLC WH | 871869698423900 |
| LL523X LED62S/840 PSD WB 13 ELP1 WH | 871869699421400 |
| LL523X LED62S/840 PSD PCO 7 WH | 871869638414500 |
| LL523X LED62S/840 PSD WB 7 VLC SI | 871869699335400 |
| LL523X LED62S/840 PSD WB 7 WH | 871869638423700 |
| LL523X LED62S/840 PSD MB 7 WH | 871869638432900 |
| LL523X LED62S/840 PSD NB 7 WH | 871869638438100 |
| LL523X LED62S/840 PSD DA35W 7 WH | 871869638444200 |

| Linear panels | |
|--|-----------------|
| Linear panels IP20 | EOC |
| LL523X LED62S/840 PSD DA25W 7 WH | 871869638450300 |
| LL523X LED62S/840 PSD DA25N 7 WH | 871869638456500 |
| LL523X LED62S/840 PSD A20 7 WH | 871869638462600 |
| LL523X LED62S/840 PSD WB 7 SI | 871869638468800 |
| LL523X LED62S/840 PSD WB 7 BK | 871869638474900 |
| LL523X LED84S/840 PSU WB 7 WH | 871869698667700 |
| LL523X LED84S/840 PSU PCO 7 WH | 871869699563100 |
| LL523X LED100S/865 PSD WB 7 WH | 871869933311900 |
| LL523X LED100S/840 PSD DA35W 7 BK | 871869934512900 |
| LL523X LED100S/830 PSD DA45W 7 VLC WH | 871869941958500 |
| LL523X LED100S/830 PSD WB 7 VLC WH | 871869941959200 |
| LL523X LED100S/840 PSD WB 7 VLC WH | 871869698042200 |
| LL523X LED100S/840 PSD A20 7 VLC WH | 871869698043900 |
| LL523X LED100S/840 PSD WB 7 VLC BK | 871869698046000 |
| LL523X LED100S/830 PSD WB 13 ELP1 VLC WH | 871869941960800 |
| LL523X LED100S/840 PSD DA35W 7 VLC BK | 871869698127600 |
| LL523X LED100S/840 PSD DA35W 7 VLC WH | 871869698128300 |
| LL523X LED100S/840 PSD A20 7 VLC BK | 871869698259400 |
| LL523X LED100S/840 PSD DA35W 7 VLC WH | 871869698128300 |
| LL523X LED100S/840 PSD A20 7 VLC BK | 871869698259400 |
| LL523X LED100S/840 PSD DA25W 7 VLC BK | 871869698260000 |
| LL523X LED100S/840 PSD A20 7 BK | 871869698319500 |
| LL523X LED100S/840 PSD DA25W 7 VLC WH | 871869698377500 |
| LL523X LED100S/830 PSD DA25W 7 VLC WH | 871869698391100 |
| LL523X LED100S/840 PSD WB 7 WH | 871869698394200 |
| LL523X LED100S/840 PSD WB 7 CLO-VLC WH | 871869698622600 |
| LL523X LED100S/840 PSD DA25N 7 VLC SI | 871869699329300 |
| LL523X LED100S/840 PSD DA45W 7 VLC SI | 871869699331600 |
| LL523X LED100S/840 PSD WB 7 VLC SI | 871869699334700 |
| LL523X LED100S/840 PSD WB 13 WH 2N | 871869923088300 |
| LL523X LED100S/840 PSED100% DA45W 13 WH | 871869699183100 |
| LL523X LED100S/840 PSED WB 13 VLC WH | 871869698424600 |
| LL523X LED100S/840 PSD PCO 7 WH | 871869638415200 |
| LL523X LED100S/840 PSD WB 7 WH | 871869638424400 |
| LL523X LED100S/840 PSD MB 7 WH | 871869638433600 |
| LL523X LED100S/840 PSD NB 7 WH | 871869638439800 |
| LL523X LED100S/840 PSD DA35W 7 WH | 871869638445900 |
| LL523X LED100S/840 PSD DA25W 7 WH | 871869638451000 |
| LL523X LED100S/840 PSD DA25N 7 WH | 871869638457200 |
| LL523X LED100S/840 PSD A20 7 WH | 871869638463300 |
| LL523X LED100S/840 PSD WB 7 SI | 871869638469500 |
| LL523X LED100S/840 PSD WB 7 BK | 871869638475600 |
| LL523X LED100S/835 PSD WB 7 WH | 871869698726100 |
| LL523X LED100S/840 PSD XNB 7 WH XT | 871869698728500 |
| LL523X LED123S/850 PSD PCO 7 WH | 871869923085200 |
| LL523X LED123S/840 PSD NB 7 ELP1 WH L3 | 871869941635500 |
| LL523X LED123S/865 PSD DA35W 7 WH | 871869941649200 |
| LL523X LED123S/840 PSD WB 7 ELP1 WH L3 | 871869699047600 |
| LL523X LED123S/840 PSD MB 7 ELP1 WH L3 | 871869699150300 |
| LL523X LED123S/840 PSD DA45 7 ELP1 WH L3 | 871869699151000 |
| LL523X LED123S/840 PSU NB 7 WH | 871869934252400 |
| LL523X LED123S/830 PSD WB 7 WH | 871869933220400 |

Ordering information and European Ordering Codes

| Linear panels | |
|--|-----------------|
| Linear panels IP20 | EOC |
| LL523X LED123S/830 PSD DA25N 7 WH | 871869933222800 |
| LL523X LED123S/830 PSD A20 7 WH | 871869933224200 |
| LL523X LED123S/830 PSD WB 7 VLC WH | 871869941961500 |
| LL523X LED123S/840 PSD DA25W 7 VLC WH | 871869698044600 |
| LL523X LED123S/840 PSD WB 7 VLC WH | 871869698045300 |
| LL523X LED123S/840 PSD MB 7 VLC WH | 871869698099600 |
| LL523X LED123S/840 PSD DA35W 7 VLC WH | 871869698129000 |
| LL523X LED123S/840 PSD MB 7 CLO-VLC WH | 871869698255600 |
| LL523X LED123S/840 PSD WB 7 VLC BK | 871869698261700 |
| LL523X LED123S/840 PSD A20 7 VLC WH | 871869698286000 |
| LL523X LED123S/840 PSD PCO 7 VLC WH | 871869698557100 |
| LL523X LED123S/840 PSD PCO 7 VLC SI | 871869698571700 |
| LL523X LED123S/840 PSD PCO 7 VLC BK | 871869698572400 |
| LL523X LED123S/840 PSD DA25W 7 BK | 871869698589200 |
| LL523X LED123S/840 PSD A20 7 BK | 871869699437500 |
| LL523X LED123S/840 PSD WB 7 CLO-VLC WH | 871869699455900 |
| LL523X LED123S/840 PSD PCO 7 WH | 871869638416900 |
| LL523X LED123S/840 PSD WB 7 WH | 871869638425100 |
| LL523X LED123S/840 PSD MB 7 WH | 871869638434300 |
| LL523X LED123S/840 PSD NB 7 WH | 871869638440400 |
| LL523X LED123S/840 PSD DA35W 7 WH | 871869638446600 |
| LL523X LED123S/840 PSED100% NB 13 WH | 871869699181700 |
| LL523X LED123S/840 PSED100% WB 13 WH | 871869699182400 |
| LL523X LED123S/840 PSED100% MB 13 WH | 871869699184800 |
| LL523X LED123S/840 PSD WB 13 ELD3 WH | 871869934388000 |
| LL523X LED123S/840 PSD WB 13 ELD3 VLC WH | 871869698097200 |

| Linear panels | |
|---|-----------------|
| Linear panels IP20 | EOC |
| LL523X LED123S/840 PSD DA35W 13 ELP1 WH | 871869698166500 |
| LL523X LED123S/830 PSED DA45W 13 WH | 871869698288400 |
| LL523X LED123S/840 PSED WB 13 VLC WH | 871869698425300 |
| LL523X LED123S/840 PSD NB 13 ELP1 WH | 871869699420700 |
| LL523X LED123S/840 PSD WB 13 ELP1 WH | 871869699422100 |
| LL523X LED123S/840 PSD DA25W 7 WH | 871869638452700 |
| LL523X LED123S/840 PSD DA25N 7 WH | 871869638458900 |
| LL523X LED123S/840 PSD A20 7 WH | 871869638464000 |
| LL523X LED123S/840 PSD WB 7 SI | 871869638470100 |
| LL523X LED123S/840 PSD WB 7 BK | 871869638476300 |
| LL523X LED123S/840 PSD XNB 7 WH XT | 871869698729200 |
| Linear panels IP54 | EOC |
| LL612X LED61S/840 PSD WB 7 WH | 871869638494700 |
| LL612X LED61S/840 PSD MB 7 WH | 871869638495400 |
| LL612X LED61S/840 PSD NB 7 WH | 871869638496100 |
| LL623X LED100S/840 PSD NB 13 ELD3 WH | 871869699439900 |
| LL623X LED100S/840 PSD MB 13 ELD3 WH | 871869699441200 |
| LL623X LED123S/840 PSD NB 13 ELP1 WH | 871869699423800 |
| LL623X LED123S/840 PSD WB 13 ELP1 WH | 871869699424500 |
| LL623X LED123S/840 PSD NB 13 ELD3 WH | 871869699443600 |
| LL623X LED123S/840 PSD WB 13 ELD3 WH | 871869699445000 |
| LL623X LED123S/840 PSD WB 7 WH | 871869638497800 |
| LL623X LED123S/840 PSD MB 7 WH | 871869638498500 |
| LL623X LED123S/840 PSD NB 7 WH | 871869638499200 |

| Accessories | |
|--------------------------------|-----------------|
| Blind covers IP20 | EOC |
| LL500Z BC L570 SI | 871869698955599 |
| LL500Z BC L570 BK | 871869698956299 |
| LL500Z BC L285 WH | 871869698957999 |
| LL500Z BC L285 SI | 871869698958699 |
| LL500Z BC L285 BK | 871869698959399 |
| LL500Z BC L1150 WH | 871869698951799 |
| LL500Z BC L1150 SI | 871869698952499 |
| LL500Z BC L1150 BK | 871869698953199 |
| LL500Z BC L570 WH | 871869698954899 |
| LL500Z BC L2300 WH | 871869638354400 |
| LL500Z BC L2300 SI | 871869638355100 |
| LL500Z BC L2300 BK | 871869638356800 |
| LL500Z BC L200 FI11MM+PC WH | 871869941659100 |
| LL500Z BC L200 FI21MM+PC WH | 871869941660700 |
| LL500Z BC L198 WH SET OF 10PCS | 871869698973900 |
| LL500Z BC L265 WH SET OF 9PCS | 871869698974600 |
| LL500Z BC L483 WH SET OF 10PCS | 871869698975300 |

| Accessories | |
|------------------------|-----------------|
| Blind covers IP54 | EOC |
| LL600Z BC L2180 WH | 871869698950099 |
| LL600Z BC L520 WH | 871869698947099 |
| LL600Z BC L1040 WH | 871869698948799 |
| LL600Z BC L1090 WH | 871869698949499 |
| Electrical accessories | EOC |
| LL500Z 2XEP CU WH | 871869637444399 |
| LL500Z 2XEP CU SI | 871869637445099 |
| LL500Z 2XEP CU BK | 871869637446799 |
| LL500Z CM L400 WH | 871869638319300 |
| LL500Z CM L400 SI | 871869638320900 |
| LL500Z CM L400 BK | 871869638321600 |
| LL500Z CM L595 WH | 871869638326100 |
| LL500Z CM L595 SI | 871869638327800 |
| LL500Z CM L595 BK | 871869638328500 |

| Accessories | |
|------------------------|-----------------|
| Cable duct accessories | EOC |
| LL512Z CD WH | 871869637464199 |
| LL512Z CD SI | 871869637465899 |
| LL512Z CD BK | 871869637466599 |
| LL523Z CD WH | 871869637467299 |
| LL523Z CD SI | 871869637468999 |
| LL523Z CD BK | 871869637469699 |
| LL546Z CD WH | 871869637470299 |
| LL546Z CD SI | 871869637471999 |
| LL546Z CD BK | 871869637472699 |
| LL500Z CDS WH | 871869637473399 |
| LL500Z CDS SI | 871869637474099 |
| LL500Z CDS BK | 871869637475799 |

| Mounting accessories | |
|------------------------|-----------------|
| | EOC |
| LL500Z SW2 L1250 | 871869637476499 |
| LL500Z SW2 L3000 | 871869637477199 |
| LL500Z SW2 L5000 | 871869637478899 |
| LL500Z SMB WH | 871869637448199 |
| LL500Z SMB SI | 871869637449899 |
| LL500Z SMB BK | 871869637450499 |
| LL500Z MB-SW WH | 871869637451199 |
| LL500Z MB-SW SI | 871869637452899 |
| LL500Z MB-SW BK | 871869637453599 |
| LL500Z PB WH | 871869637454299 |
| LL500Z PB SI | 871869637455999 |
| LL500Z PB BK | 871869637456699 |
| LL500Z MB-SW2 L5000 WH | 871869637457399 |
| LL500Z MB-SW2 L5000 SI | 871869637458099 |
| LL500Z MB-SW2 L5000 BK | 871869637459799 |
| LL500Z CB-CH WH | 871869637460399 |
| LL500Z CB-CH SI | 871869637461099 |
| LL500Z CB-CH BK | 871869637462799 |
| LL500Z SPA-CD | 871869637463499 |
| LL500Z CPE WH | 871869638329200 |
| LL500Z CPE SI | 871869638330800 |
| LL500Z CPE BK | 871869638331500 |

| Accessories | |
|------------------------|-----------------|
| Additional accessories | EOC |
| LL500Z BA WH | 871869699833500 |
| LL500Z BA BK | 871869699834200 |
| LL500Z BA SI | 871869699835900 |
| LL500Z MOD-DE WH | 871869699836600 |
| LL500Z MOD-UK WH | 871869699837300 |
| LL500Z MOD-FR WH | 871869699838000 |
| LL500Z MOD-DE BK | 871869699839700 |
| LL500Z MOD-UK BK | 871869699840300 |
| LL500Z MOD-FR BK | 871869699841000 |
| LL500Z MOD-DE SI | 871869699842700 |
| LL500Z MOD-UK SI | 871869699843400 |
| LL500Z MOD-FR SI | 871869699844100 |

| Sensor units | |
|----------------------------|-----------------|
| | EOC |
| LL500E ACW BK | 871869923147700 |
| LL500E ACL LLC1663 LRI1668 | 871869941631700 |
| LL500E LRM8120 | 871869934196100 |
| LL500E ACL LLC1663 LRI1667 | 871869934197800 |
| LL500E ACW | 871869638373500 |
| LL500E IPT-CG | 871869637479599 |
| LL500E ACW-W | 871869982455600 |
| LL500E ACW-L | 871869982454900 |
| LL500E WGC WH | 871869944810300 |
| LL500E WGC BK | 871869944812700 |
| LL500E WGC SI | 871869944814100 |
| LL500E BLE WH | 871869944811000 |
| LL500E BLE BK | 871869944813400 |
| LL500E BLE SI | 871869944815800 |



©2020 Signify Holding. All rights reserved. The information provided herein is subject to change, without notice. Signify does not give any representation or warranty as to the accuracy or completeness of the information included herein and shall not be liable for any action in reliance thereon. The information presented in this document is not intended as any commercial offer and does not form part of any quotation or contract, unless otherwise agreed by Signify. Philips and the Philips Shield Emblem are registered trademarks of Koninklijke Philips N.V. All other trademarks are owned by Signify Holding or their respective owners.

www.lighting.philips.com