



MASTER LEDtube EM/ Mains T8

MAS LEDtube 900mm HO 12W 840 T8

The Philips MASTER LEDtube integrates a LED light source into a traditional fluorescent form factor. Its unique design creates a perfectly uniform visual appearance, which cannot be distinguished from traditional fluorescent. These T8 LED tubes are the right choice for absolute performance and are designed to stand up to everyday conditions. Unparalleled savings thanks to low energy consumption and an exceptionally long lifetime ensure this tube masters every demanding application.

Warnings and Safety

- NOTE: The overall energy efficiency and light distribution of any installation that uses these lamps will be determined by the design of the installation.

Product data

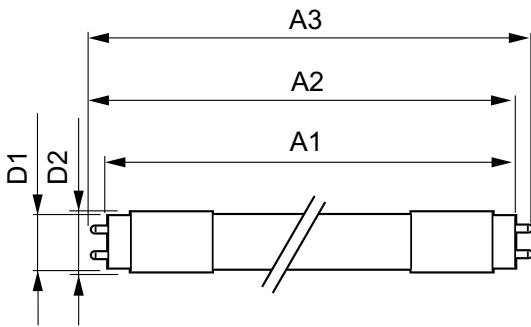
General Information		Operating and Electrical	
Cap-Base	G13 ROT (Rotating) [Medium Bi-Pin Fluorescent]	Luminous Efficacy (rated) (Nom)	131 lm/W
Nominal lifetime	75,000 hour(s)	Color Consistency	<6
Switching Cycle	200,000	Color rendering index (CRI)	80
Lighting Technology	LED	LLMF At End Of Nominal Lifetime (Nom)	70 %
Flux measurement reference	Sphere	Line Frequency	50 to 60 Hz
Color Code	840 [CCT of 4000K]	Input Frequency	50 to 60 Hz
Beam Angle (Nom)	160 degree(s)	Power Consumption	12 W
Luminous Flux	1,575 lumen	Starting Time (Nom)	0.5 s
Color Designation	Cool White (CW)	Warm-up time to 60% light	0.5 s
Correlated Color Temperature (Nom)	4000 K	Power Factor (Fraction)	0.9
		Voltage (Nom)	220-240 V

MASTER LEDtube EM/Mains T8

Temperature	
Ambient temperature range	-20 °C to 45 °C
T-Case Maximum (Nom)	50 °C
Controls and Dimming	
Dimmable	No
Mechanical and Housing	
Bulb Finish	Frosted
Bulb Material	Plastic
Product Length	900 mm
Bulb Shape	Tube, double-ended
Approval and Application	
Energy Saving Product	Yes
Approval Marks	RoHS compliance TUV CE marking KEMA Keur certificate

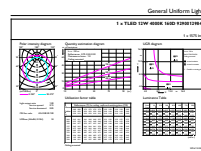
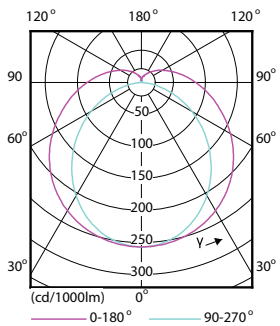
Energy Consumption kWh/1000 h	12 kWh
EPREL Registration Number	1,206,963
CE mark	Yes
EU RoHS compliant	Yes
Product Data	
Full product code	871869668708600
Order product name	MAS LEDtube 900mm HO 12W 840 T8
Order code	929001298402
Numerator - Quantity Per Pack	1
Numerator - Packs per outer box	10
Material number (12NC)	929001298402
Full product name	MAS LEDtube 900mm HO 12W 840 T8
EAN/UPC - Case	8718696687093

Dimensional drawing



Product	D1	D2	A1	A2	A3
MAS LEDtube 900mm HO 12W 840 T8	25.78 mm	28 mm	893.3 mm	900.4 mm	907.5 mm

Photometric data

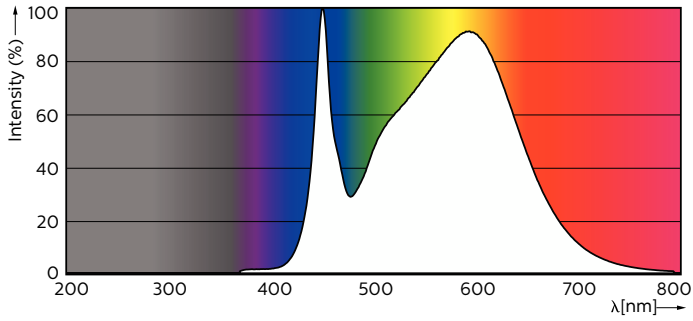


General Lighting Layout
1 x 900mm HO 12W 840 T8
Page 17

Light Distribution Diagram - MAS LEDtube 900mm HO 12W 840 T8

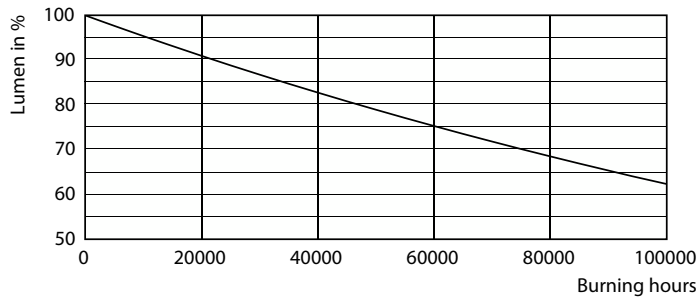
MASTER LEDtube EM/Mains T8

Photometric data

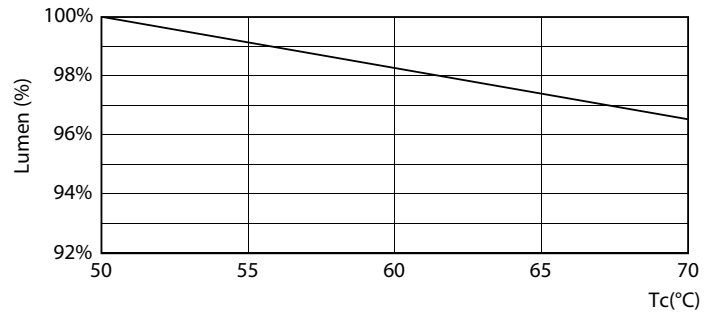


Spectral Power Distribution Colour - MAS LEDtube 900mm HO 12W 840 T8

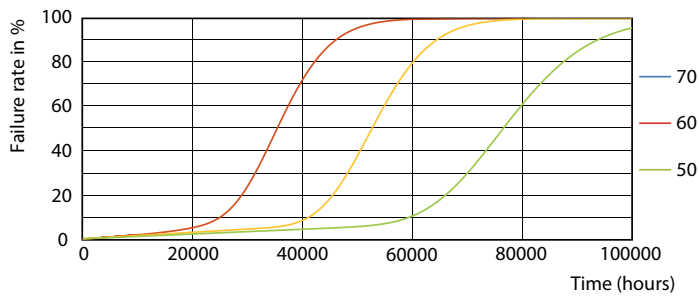
Lifetime



Lumen Maintenance Diagram - MAS LEDtube 900mm HO 12W 840 T8



Lumen Maintenance Diagram - MAS LEDtube 900mm HO 12W 840 T8



Life Expectancy Diagram - MAS LEDtube 900mm HO 12W 840 T8



Life Expectancy Diagram - MAS LEDtube 900mm HO 12W 840 T8

MASTER LEDtube EM/Mains T8

Lifetime



Life Expectancy Diagram - MAS LEDtube 900mm HO 12W 840 T8

