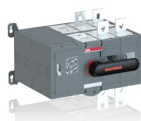


PRODUCT-DETAILS

OTM630E2CM230V

OTM630E2CM230V MOTORIZED C/O SWITCH



General Information

Extended Product Type	OTM630E2CM230V
Product ID	1SCA121268R1001
EAN	6417019525297
Catalog Description	OTM630E2CM230V MOTORIZED C/O SWITCH
Long Description	OTM630E2CM230V MOTORIZED C/O SWITCH, Direct mounted handle, Open transition

Circular Value

Conflict Minerals Reporting Template (CMRT)	9AKK108467A5658
REACH Declaration	1SCC011021D0201
RoHS Information	1SCC011020D0201

Ordering

Minimum Order Quantity	1 piece
Customs Tariff Number	85365080
Country of Origin	Finland (FI)

Popular Downloads

Data Sheet, Technical Information	1SCC303003C0201
Instructions and Manuals	1SCC303002M0204

Dimensions

Product Net Width	346 mm
Product Net Height	250 mm
Product Net Depth / Length	299 mm
Product Net Weight	10.3 kg 22.7 lb

Technical

Rated Operational Current AC-21A (I_e)	(380 ... 415 V) 630 A (500 V) 630 A (690 V) 630 A
Rated Operational Current AC-22A (I_e)	(380 ... 415 V) 630 A (500 V) 630 A (690 V) 630 A
Rated Operational Current AC-31B (I_e)	(380 ... 415 V) 630 A
Rated Operational Current AC-33B (I_e)	(380 ... 415 V) 630 A
Conventional Free-air Thermal Current (I_{th})	$\Theta = 40\text{ °C}$ 630 A
Conventional Thermal Current (I_{the})	Fully Enclosed 630 A
Rated Impulse Withstand Voltage (U_{imp})	12 kV
Rated Insulation Voltage (U_i)	1000 V
Rated Operational Voltage	1000 V
Rated Short-time Withstand Current Low Voltage (I_{cw})	for 1 s 20 kiloampere rms
Motor Operational Voltage	220 ... 240 V AC
Power Loss	25 W
Pollution Degree	3
Handle Color	Black
Handle Type	Direct mounted handle
Switches Operating Mechanism	Mechanism at the End of the Switch
Distance Between Phases	Standard
Position of Line Terminals	Top In - Bottom Out, Bottom In - Top Out
Operating Mode	Front operated
Mounting Type	Base mounting
Number of Poles	2
Degree of Protection	Front IP20
Transition Type	Open

Environmental

RoHS Status

Following EU Directive 2011/65/EU and Amendment 2015/863 July 22, 2019

Certificates and Declarations

Declaration of Conformity - CE	No declaration needed
REACH Declaration	1SCC011021D0201

Container Information

Package Level 1 Units	1 piece
Package Level 1 Width	310 mm
Package Level 1 Depth / Length	560 mm
Package Level 1 Height	330 mm
Package Level 1 Gross Weight	14.26 kg
Package Level 1 EAN	6417019525297

Classifications

Object Classification Code	Q
ETIM 7	EC000216 - Switch disconnecter
ETIM 8	EC000216 - Switch disconnecter
ETIM 9	EC000216 - Switch disconnecter (low voltage)
eClass	V11.1 : 27371403
WEEE Category	5. Small Equipment (No External Dimension More Than 50 cm)

Categories

Low Voltage Products and Systems → Switches → Change-over and Transfer Switches → Motorized Change-over Switches

