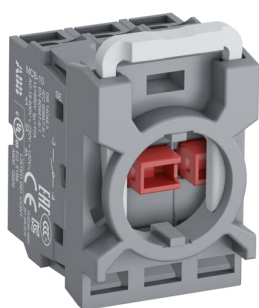


PRODUCT-DETAILS

MCBH-12

MCBH-12 Contact Block



General Information

Extended Product Type	MCBH-12
Product ID	1SFA611605R1121
EAN	7320500307540
Catalog Description	MCBH-12 Contact Block
Long Description	<p>The MCBH-12 Contact Block is: Maintained - Non-illuminated - Single contact block - Front mounting - silver (Ag) - 1 NO - 2NC - 690 V</p> <p>This Contact Block is part of ABB's modular plastic range, the most versatile range with a high level of flexibility and market-leading electrical ratings. Engineered for total reliability, longer lifetime, and highest mechanical durability. Self-cleaning contacts ensure reliable operation without the need for maintenance, increasing uptime. A high degree of protection guarantees reliability in extreme environments. The innovative design simplifies the entire process, from selection to easy and quick, tool-free installation. The perfect solution for every application.</p>

Ordering

Minimum Order Quantity	10 piece
Customs Tariff Number	8536901000

Popular Downloads

Data Sheet, Technical Information	1SFC151007C02_
Instructions and	1SFC151011M0201

Manuals

Dimensions

Product Net Width	0.03 m
Product Net Height	0.048 m
Product Net Depth / Length	0.036 m
Product Net Weight	0.063 kg

Technical

Ambient Air Temperature	Operation -25 ... +70 °C Storage -40 ... +85 °C
Illumination	Non-illuminated
Function	With 3-position holder
Mounting Type	Front mounting
Number of Auxiliary Contacts NC	2
Number of Auxiliary Contacts NO	1
Degree of Protection	Terminals IP20
Pollution Degree	3
Rated Insulation Voltage (U _i)	690 V
Rated Impulse Withstand Voltage (U _{imp})	6 kV
Rated Frequency (f)	50 / 60 Hz
Rated Operational Voltage	Maximum 690 V
Rated Operational Current DC-13 (I _e)	(24 V) 5 A (125 V) 0.55 A
Rated Operational Current AC-15 (I _e)	(230 V AC) 6 A
Power Loss	Maximum 7.5 W
Mechanical Durability	10 million
Connecting Capacity	Flexible with Ferrule 1 x 0.75...2.5 mm ² Flexible with Ferrule 2 x 0.75...2.5 mm ² Flexible with Insulated Ferrule 1 x 0.75...2.5 mm ² Flexible with Insulated Ferrule 2 x 0.75...2.5 mm ² Flexible 1 x 0.75 ... 2.5 mm ² Flexible 2 x 0.75 ... 2.5 mm ² Solid 1 x 0.75...2.5 mm ² Solid 2 x 0.75...2.5 mm ²
Connection Type	Screw Clamp
Terminal Type	Screw Terminals
Tightening Torque	0.9 N·m
Wire Stripping Length	8 mm
Suitable For	MP1 MP2 MP3 MP4 MPD1 MPD2 MPD3 MPD4 MPD5 MPD11 MPD12 MPD13 MPD14

MPD15
 MPD16
 MPM1
 MPM2
 KP6
 MPET3
 MPEP3
 MPEK3
 MPET4
 MPEP4
 MPEK4
 MPMT3
 MPMT4
 MPMP3
 MPMP4
 M2SS1
 M2SS2
 M2SS3
 M2SS4
 M2SS5
 M2SS6
 M3SS1
 M3SS2
 M3SS3
 M3SS4
 M3SS5
 M3SS6
 M3SS7
 M3SS8
 M3SSC1
 M3SSC2
 M3SSC3
 M3SSC4
 M3SSC5
 M3SSC6
 M3SSC7
 M3SSC8
 M2SSK1
 M2SSK2
 M2SSK3
 M3SSK1
 M3SSK2
 M3SSK3
 MTS1
 MTS2
 MTS3
 MJS1
 MJS2
 MJS5
 MJS6
 MJS7
 MJS8
 MJS11
 MJS12

Suitable for Product Class	Pilot Devices
----------------------------	---------------

Technical UL/CSA

Connecting Capacity	1x 18...14 AWG
UL/CSA	2x 18...14 AWG

Environmental

RoHS Status	Following EU Directive 2011/65/EU and Amendment 2015/863 July 22, 2019
RoHS Date	0635 4
RoHS Information	2CMT2015-005452
WEEE Category	5. Small Equipment (No External Dimension More Than 50 cm)

Certificates and Declarations

CQC Certificate	CQC2005010304154103
cULus Certificate	UL-E76003-20140513
Declaration of Conformity - CCC	2020980305001528
Declaration of Conformity - CE	2CMT2015-005452
Declaration of Conformity - UKCA	2CMT2020-006121

Container Information

Package Level 1 Units	bag 1 piece
Package Level 1 Width	0.11 m
Package Level 1 Depth / Length	0.15 m
Package Level 1 Height	0.03 m
Package Level 1 Gross Weight	0.063 kg
Package Level 1 EAN	7320500307540

Classifications

Object Classification Code	S
ETIM 6	EC000041 - Auxiliary contact block
ETIM 7	EC000041 - Auxiliary contact block
ETIM 8	EC000041 - Auxiliary contact block
eClass	V11.0 : 27371302
UNSPSC	39122221
IDEA Granular Category Code (IGCC)	5219 >> Switch part or accessory
E-Number (Finland)	2339076
E-Number (Sweden)	3714027

Categories

Low Voltage Products and Systems → Control Products → Pilot Devices → Modular Plastic Range

