

PRODUCT DATASHEET

DR P 500W 220-240V 215V P

LED DRIVER FOR LED STRIP HIGH VOLTAGE 230V | Constant voltage led driver with 215V output voltage



Areas of application

- General indoor illumination
- General outdoor illumination
- Industry and construction site
- Offices, retail outlets and conference rooms
- Architecture lighting
- Decorative illumination

Product benefits

- Simple and quick connection thanks to twist lock functionality
- Increased LED strip luminous efficiency and luminous output in combination with LED driver
- Low flicker light thanks to LED driver DR P 500W 220-240V 215V P
- Perfectly matched to 230V AC LED flexible strips
- Quick and simple installation
- Good efficiency and reliability

Product features

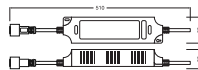
- Available in 500 W
- Prewired cables for mains supply connection and led strip
- Supply voltage: 220...240 V
- Operating frequency: 50/60 Hz
- Overtemperature protection, output circuit short protection, output circuit over voltage protection
- Lifetime: up to 50,000 h (at max. Ta temperature)
- Type of protection: IP66

TECHNICAL DATA

Electrical data

Nominal wattage	500.00 W
Nominal output power	500 W
Nominal voltage	220...240 V
Nominal output voltage	215 V
Input voltage AC	198...264 V
U-OUT (working voltage)	215 V
Type of current	AC/DC
Nominal current	2330 mA
Nominal output current	2330.000 mA
Output ripple current (100 Hz)	8 %
Mains frequency	50/60 Hz
Power factor λ	> 0.90
ECG efficiency	94 %
Max. ECG no. on circuit breaker 10 A (B)	3
Max. ECG no. on circuit breaker 25 A (B)	8
Surge capability (L-N)	1 kV

Dimensions & Weight



Length	510.00 mm
Width	60.00 mm
Height	38.00 mm
Cable cross-section, input side	1.0 mm ²
Product weight	900.00 g

Colors & materials

Product color	White
Casing material	Plastic
Body material	Plastic

Temperatures & operating conditions

Ambient temperature range	-20...+45 °C
---------------------------	--------------

Maximum temperature at tc test point	85 °C
Temperature range in operation	-20...+45 °C
Permitted rel. humidity during operation	0...93 %

Lifespan

ECG lifetime	50000 h
Number of switching cycles	25000

Additional product data

Product remark	Available from September 2024
----------------	-------------------------------

Capabilities

Dimmable	No
Dimming interface	Not dimmable
Overheating protection	Yes
Short-circuit protection	Yes

Certificates & Standards

Approval marks – approval	CE / UKCA / EAC
Protection class	II
Type of protection	IP66




LOGISTICAL DATA




Temperature range at storage	-20...+80 °C
------------------------------	--------------

Safety advice

- All electrical connections must be made by a qualified person.
- Caution, risk of electric shock.
- Do not open enclosure-housing.
- Disconnect mains before installation.

DOWNLOAD DATA

Documents and certificates	Document name
 User instruction / safety instructions	UI_LED STRIP_HV
 Legal information	Informationstext 18 Abs 4 ElektroG
 Legal information	Safety Insert G11201420

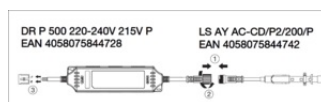
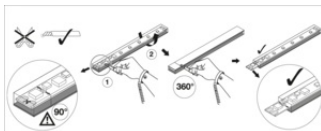
Documents and certificates		Document name
	Declarations of conformity	DR P
	Declarations of conformity UKCA	DR P
Tender texts		Document name
	Tender documents	LED DRIVER FOR LED STRIP HIGH VOLTAGE 230V 500W 220 240V 215V P-en

LOGISTICAL DATA

Product code	Packaging unit (Pieces/Unit)	Dimensions (length x width x height)	Gross weight	Volume
4058075844728	Folding box 1	67 mm x 372 mm x 52 mm	994.00 g	1.30 dm ³
4058075844735	Shipping box 10	392 mm x 352 mm x 139 mm	10485.00 g	19.18 dm ³

The mentioned product code describes the smallest quantity unit which can be ordered. One shipping unit can contain one or more single products. When placing an order, for the quantity please enter single or multiples of a shipping unit.

ADDITIONAL CATALOG INFORMATION



DISCLAIMER

Subject to change without notice. Errors and omission excepted. Always make sure to use the most recent release.