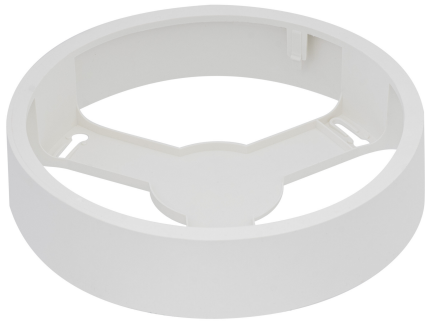


PRODUCT DATASHEET

DL IP44 FRAME DN 215 WT

DOWNLIGHT IP44 FRAME | Surface mounting frame for Downlight IP44



Areas of application

- Direct replacement for luminaires with compact fluorescent lamps
- General illumination
- Public areas
- Stairways
- Corridors
- Shops
- Bathrooms

Product benefits

- Easily installed

Product features

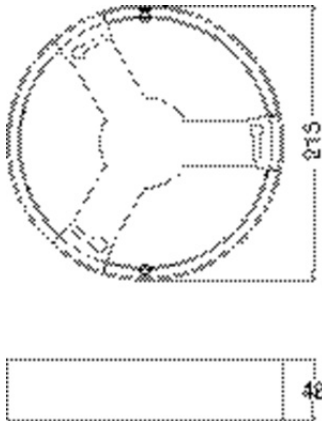
- Robust polycarbonate casing
- Mounting accessories included



TECHNICAL DATA

Dimensions & Weight

Diameter	215 mm
Height	48 mm
Product weight	173.00 g





Materials & Colors

Product color	White
Housing color	White
Body material	Polycarbonate (PC)

Application & Mounting

Mounting type	Surface
Mounting location	Ceiling

DOWNLOAD DATA

Documents and certificates	
	User instruction
	Declarations Of Conformity UKCA

Tender texts



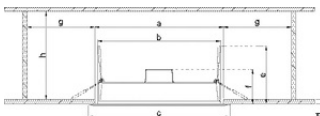
Tender documents

LOGISTICAL DATA

Product code	Packaging unit (Pieces/Unit)	Dimensions (length x width x height)	Gross weight	Volume
4058075709966	Folding box 1	220 mm x 54 mm x 224 mm	247.00 g	2.66 dm ³
4058075709973	Shipping box 10	450 mm x 284 mm x 240 mm	2948.00 g	30.67 dm ³

The mentioned product code describes the smallest quantity unit which can be ordered. One shipping unit can contain one or more single products. When placing an order, for the quantity please enter single or multiples of a shipping unit.

ADDITIONAL CATALOG INFORMATION



Model	a [mm]	b [mm]	c [mm]	d [mm]	e [mm]	f [mm]	g [mm]	h [mm]
DL IP44 DN090	Ø 75	Ø 58	Ø 90	3-25	65	45	100	170
DL IP44 DN116	Ø 100	Ø 80	Ø 116	3-25	65	45	100	170
DL IP44 DN166	Ø 160	Ø 140	Ø 166	3-25	65	45	100	170
DL IP44 DN190	Ø 116	Ø 105	Ø 190	3-25	65	45	100	170
DL IP44 DN216	Ø 200	Ø 194	Ø 216	3-25	65	45	100	170

DISCLAIMER

Subject to change without notice. Errors and omission excepted. Always make sure to use the most recent release.