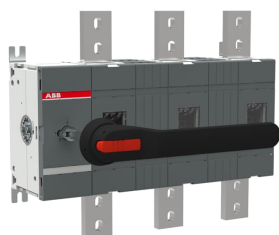


PRODUCT-DETAILS

OT1600E03W4P

OT1600E03W4P SWITCH-DISCONNECTOR



Informations générales

| | |
|------------------------------|---|
| Extension du type de produit | OT1600E03W4P |
| Code de produit | 1SCA022865R9860 |
| EAN | 6417019335254 |
| Description courte | OT1600E03W4P SWITCH-DISCONNECTOR |
| Description longue | 3-pole, front operated, base mounted switch-diconductor with black IP65 handle and shaft, wide phase distance, terminal bolt kit included |

Circular Value

| | |
|---|-----------------|
| Conflict Minerals Reporting Template (CMRT) | 9AKK108467A5658 |
| Informations environnementales | 1SCC301233D0201 |
| REACH Declaration | 1SCC011021D0201 |
| Informations RoHS | 1SCC011020D0201 |

Commande

| | |
|------------------|---------|
| Quantité minimum | 1 pièce |
|------------------|---------|

| | |
|----------------|--------------|
| Code douanier | 85365080 |
| Pays d'origine | Finland (FI) |

Popular Downloads

| | |
|--|---|
| Fiche produit, informations techniques | 1SCC301020C0201 |
| Instructions et manuels | 1SCC301047M0213 |
| Mechanical Drawings | 1SCC301915F0001 1SCC301914F0001 OT1600E03W4.igs |

Dimensions

| | |
|----------------------|----------|
| Produit Largeur Net | 454.5 mm |
| Produit Hauteur Net | 372 mm |
| Produit Longueur Net | 167 mm |
| Poids net | 16.5 kg |

Technique

| | |
|--|---|
| Rated Operational Current AC-21A (I_e) | (380 ... 415 V) 1600 A (500 V) 1600 A (690 V) 1600 A (1000 V) 1600 A |
| Rated Operational Current AC-22A (I_e) | (380 ... 415 V) 1600 A (500 V) 1600 A (690 V) 1600 A |
| Rated Operational Current AC-23A (I_e) | (380 ... 415 V) 1250 A (500 V) 1250 A (690 V) 1250 A |
| Rated Operational Power AC-23A (P_e) | (400 ... 415 V) 710 kW (500 V) 900 kW (690 V) 1200 kW |
| Courant thermique conventionnel à l'air libre (I_{th}) | $\Theta = 40$ °C 1600 A |
| Conventional Thermal Current (I_{the}) | Fully Enclosed 1600 A |
| Tension assignée de tenue aux chocs (U_{imp}) | 12 kV |
| Tension assignée d' isolement (U_i) | acc. to IEC/EN 60664-1 1000 V |
| Tension | Circuit principal 1000 V |
| Rated Short-Circuit Making Capacity (I_{cm}) | (690 V) 110 kA |
| Courant assigné de courte durée admissible (I_{cw}) | for 1 s 50 kA |
| Rated Conditional Short- Circuit Current (I_{nc}) | (1250 A fuse, 415 V) 80 kA (1250 A fuse, 500 V) 100 kA |
| Power Loss | at Rated Operating Conditions per Pole 48 W |

| | |
|------------------------------|--|
| Degré de pollution | 3 |
| Handle Color | Black |
| Handle Type | Handle and shaft included |
| Switches Operating Mechanism | Mechanism at the End of the Switch 03 (Left Side) |
| Distance Between Phases | Phase distance 140 mm |
| Position of Line Terminals | Top In - Bottom Out Bottom In - Top Out |
| Mode de fonctionnement | Front operated |
| Normes et standards | IEC 60947-3 |
| Fonctions spéciales | Wide phase distance 140 |
| Type de montage | Base mounting |
| Nombre de pôles | 3 |
| Indice de protection | Front IP00 |
| Type de borne | Lug terminals |
| Terminal Width | 50 mm |
| Couple de serrage | acc. IEC 60947-1 50 ... 75 N·m |
| Durabilité mécanique | 6000 |
| Lock Type | Yes |

Technique UL/CSA

| | |
|-------------------|--------------------------------|
| Couple de serrage | acc. IEC 60947-1 50 ... 75 N·m |
|-------------------|--------------------------------|

Environnement

| | |
|--------------------------------|--|
| Statut RoHS | Following EU Directive 2011/65/EU and Amendment 2015/863 July 22, 2019 |
| Informations environnementales | 1SCC301233D0201 |

Certificats et Déclarations (Numéro de document)

| | |
|--------------------------------|-------------------------|
| Certificat ATEX | No certification needed |
| Déclaration de Conformité - CE | 1SCC301155D2704 |
| DNV GL Certificate | 1SCC301184D0203 |
| REACH Declaration | 1SCC011021D0201 |
| Certificat UL | No certification needed |
| VDE Certificate | No certification needed |

Emballage

| | |
|-----------------------------|-------------|
| Emballage Niveau 1 Unités | box 1 pièce |
| Emballage Niveau 1 Largeur | 400 mm |
| Emballage Niveau 1 Longueur | 613 mm |

| | |
|-------------------------------|---------------|
| Emballage Niveau 1 Hauteur | 170 mm |
| Emballage Niveau 1 Poids | 19.3 kg |
| Emballage Niveau 1 EAN | 6417019335254 |

Classifications

| | |
|-----------------------------------|--|
| Code de classification d'objet | Q |
| ETIM 7 | EC000216 - Switch disconnecter |
| ETIM 8 | EC000216 - Switch disconnecter |
| ETIM 9 | EC000216 - Switch disconnecter (low voltage) |
| eClass | V11.1 : 27371403 |
| Catégorie DEEE | 5. Small Equipment (No External Dimension More Than 50 cm) |
| E-Number (Finland) | 3661762 |

Catégories

Produits basse tension → Interrupteurs → Interrupteurs-sectionneurs

