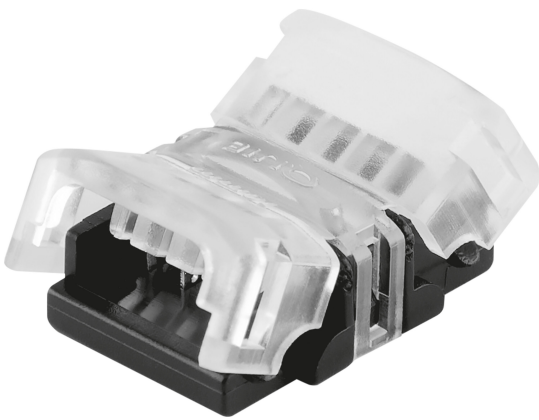


PRODUCT DATASHEET

LS AY SUP -CSD/P3

Connectors for TW LED Strips | Connectors for TW LED Strips



Areas of application

- General indoor illumination

Product benefits

- Easy installation of connector, no manual wiring required
- Tool-free installation

TECHNICAL DATA

Electrical data

Nominal voltage	0...36 V
Nominal current	5000 mA

Dimensions & Weight

Length	19.6 mm
Width	14.6 mm
Height	7.7 mm
Cable cross-section, input side	0.35...0.75 mm ²
Product weight	1.8 g

Colors & materials

Product color	Transparent
---------------	-------------

Temperatures & operating conditions

Ambient temperature range	-20...+55 °C
Temperature range in operation	-20...+55 °C

Certificates & Standards

Type of protection	IP00
--------------------	------

LOGISTICAL DATA

Temperature range at storage	-35...+85 °C
------------------------------	--------------

DOWNLOAD DATA

Documents and certificates



Declarations Of Conformity CE

LOGISTICAL DATA

Product code	Packaging unit (Pieces/Unit)	Dimensions (length x width x height)	Gross weight	Volume
4058075451353	BAG 2	80 mm x 120 mm x 5 mm	4.60 g	0.05 dm ³
4058075451360	Shipping box 100	120 mm x 100 mm x 120 mm	278.00 g	1.44 dm ³
4058075451377	Shipping box 1,000	525 mm x 140 mm x 270 mm	3171.00 g	19.85 dm ³

The mentioned product code describes the smallest quantity unit which can be ordered. One shipping unit can contain one or more single products.

When placing an order, for the quantity please enter single or multiples of a shipping unit.

DISCLAIMER

Subject to change without notice. Errors and omission excepted. Always make sure to use the most recent release.