

# 40 CD DE

# GEWISS



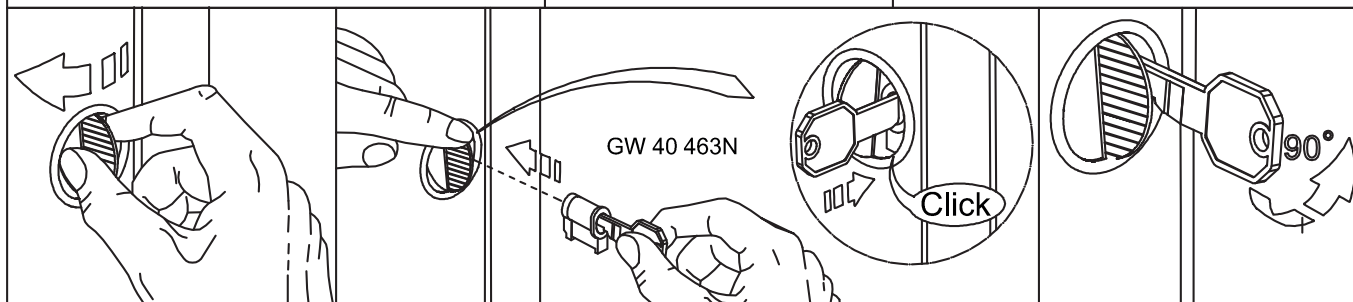
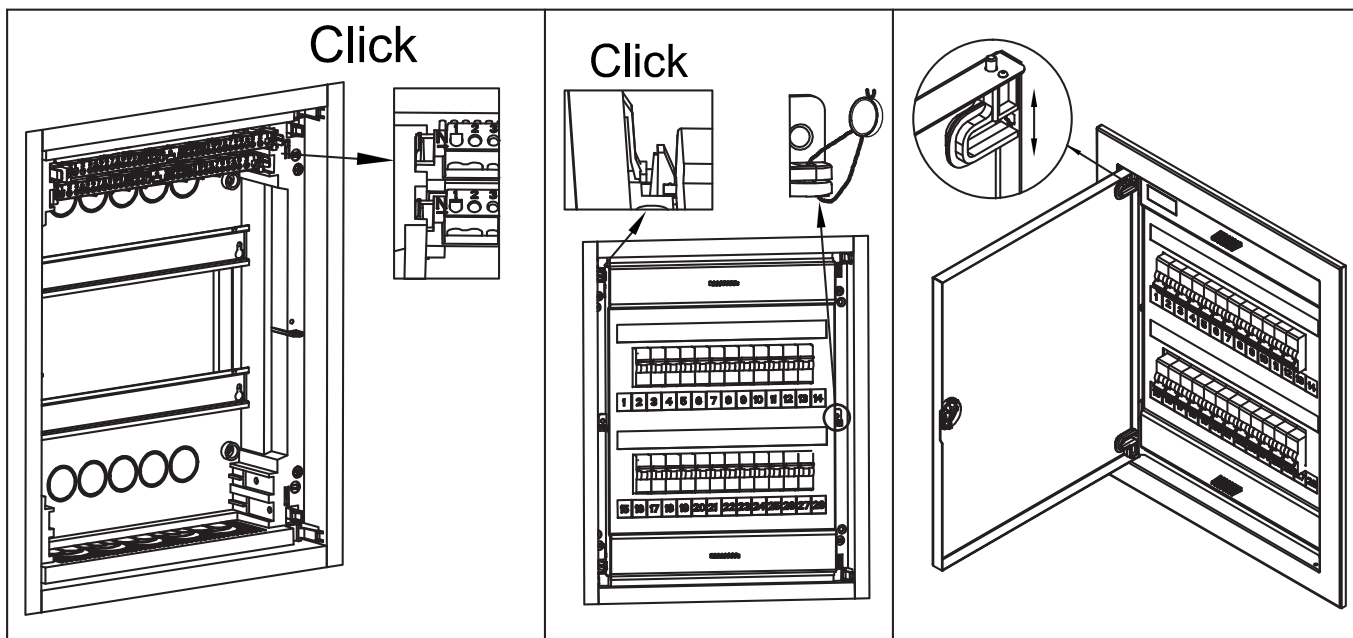
# IP40

| CODE       | A [mm] | B [mm] | IEC 60670-24<br>Pde [W] | DIN 43871<br>Pde [W] | T [°C]     |
|------------|--------|--------|-------------------------|----------------------|------------|
| GW 40 161N | 343    | 314    | 60                      | 16                   | (-15)-(60) |
| GW 40 162N | 443    | 414    | 80                      | 19                   | (-15)-(60) |
| GW 40 163N | 568    | 539    | 90                      | 24                   | (-15)-(60) |
| GW 40 164N | 753    | 724    | 100                     | 27                   | (-15)-(60) |
| GW 40 165N | 878    | 849    | 100                     | 27                   | (-15)-(60) |

| CODE       | X [mm] | Y [mm] |
|------------|--------|--------|
| GW 40 161N | 314    | 314    |
| GW 40 162N | 314    | 414    |
| GW 40 163N | 314    | 539    |
| GW 40 164N | 314    | 724    |
| GW 40 165N | 314    | 849    |

| CODE       | EN50022<br>18mm |
|------------|-----------------|
| GW 40 161N | 12+2            |
| GW 40 162N | 24+4(12x2)      |
| GW 40 163N | 36+6(12x3)      |
| GW 40 164N | 48+8(12x4)      |
| GW 40 165N | 60+10(12x5)     |

GW 40 461N

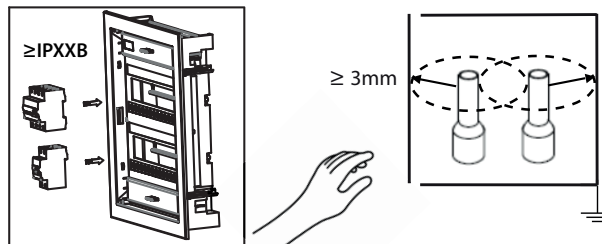


|            |                    |                    |                    |                   |                   |
|------------|--------------------|--------------------|--------------------|-------------------|-------------------|
|            |                    |                    |                    |                   |                   |
|            |                    | N                  | PE                 | N                 | PE                |
|            | GW 40 161N         | (2x16)+(8x10)      | (2x16)+(8x10)      | (2x10)+(8x6)      | (2x10)+(8x6)      |
|            | GW 40 162N         | (2x16)+(14x10)     | (2x16)+(14x10)     | (2x10)+(14x6)     | (2x10)+(14x6)     |
|            | GW 40 163N         | 2x[(2x16)+(14x10)] | 2x[(2x16)+(14x10)] | 2x[(2x10)+(14x6)] | 2x[(2x10)+(14x6)] |
|            | GW 40 164N         | 2x[(2x16)+(14x10)] | 2x[(2x16)+(14x10)] | 2x[(2x10)+(14x6)] | 2x[(2x10)+(14x6)] |
| GW 40 165N | 2x[(2x16)+(14x10)] | 2x[(2x16)+(14x10)] | 2x[(2x10)+(14x6)]  | 2x[(2x10)+(14x6)] |                   |



|                    |      |       |     |
|--------------------|------|-------|-----|
| IEC 60670-24<br>GP | Un   | Ui    | In  |
|                    | 400V | 1000V | 63A |

|                    |      |       |     |    |
|--------------------|------|-------|-----|----|
| IEC 60670-24<br>PD | Un   | Ui    | In  | IK |
|                    | 400V | 1000V | 63A | 07 |



Punto di contatto indicato in adempimento ai fini delle direttive e regolamenti UE applicabili:  
 Contact details according to the relevant European Directives and Regulations:  
 GEWISS S.p.A. Via A.Volta, 1 IT-24069 Cenate Sotto (BG) Italy tel: +39 035 946 111 E-mail: qualitymarks@gewiss.com

According to applicable UK regulations, the company responsible for placing the goods in UK market is:  
 GEWISS UK LTD - Unity House, Compass Point Business Park, 9 Stocks Bridge Way, ST IVES  
 Cambridgeshire, PE27 5JL, United Kingdom tel: +44 1954 712757 E-mail: gewiss-uk@gewiss.com

**+39 035 946 11**  
 8:30 - 12:30 / 14:00 - 18:00  
 lunedì - venerdì / monday - friday

[www.gewiss.com](http://www.gewiss.com)

