


5551 0700	<b>DATA SHEET</b>	
Valid from: 03.07.2018	<b>SILVYN® HYGIENIC</b>	

The SILVYN® HYGIENIC is a conduit gland, which is design to the DIN EN 1672-2 and EN ISO 14159.

The SILVYN® HYGIENIC has smooth surfaces and no edges – through cavities, interstices or threads on the outside – and can be used in the food and pharmaceutical industry.



**Material:**

Body	Stainless steel (AISI 316)
Nut	Stainless steel (AISI 316)
Sleeve	Brass, nickel plated
Insert	Polyamide 6
Sealing	Elastomer

**Technical Features:**

Connecting thread	M16x1,5 up to M63x1,5 acc. to EN 60423
Nominal width	NW 16 up to NW 63
Protection class	IP66, IP67, IP68 – 2bar and IP69 acc. to EN 60529
	Depending on the used conduit
Temperature range	-50°C up to +135°C



**Approvals:**

**Reference standards:**


EN 61386-1  
EN 1672-2  
EN ISO 14159

**Suitable conduits:**

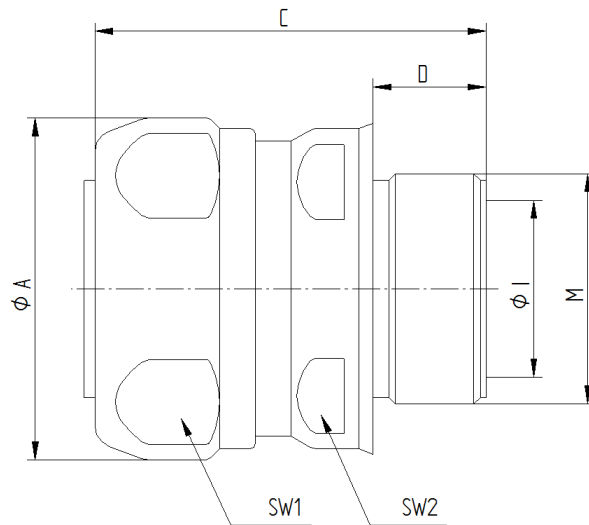
SILVYN® FG  
SILVYN® FG NM

For more information please see our current catalogue. Please do not hesitate to contact our laboratory if there are any questions regarding resistance against aggressive agents and special oil.

Creator: MAU1/PDP Released: DAMU1/PDP	Document: DB55510700EN Version: 02	Page 1 of 2
------------------------------------------	---------------------------------------	-------------

5551 0700	<b>DATA SHEET</b>	
Valid from: 03.07.2018	<b>SILVYN® HYGIENIC</b>	

**Product drawing:**



**Dimension table:**

Part No.	Nominal width NW	Thread M	Thread length D mm	Length C mm	Diameter mm		Wrench size	
					ØI	ØA	SW1	SW2
5551 0700	16	M16x1,5	12,0	45,6	10,7	31,0	29	27
5551 0701	20	M20x1,5	12,0	46,0	14,5	34,0	32	30
5551 0702	25	M25x1,5	14,0	49,3	18,7	40,0	38	36
5551 0703	32	M32x1,5	15,0	53,7	24,6	47,5	44,5	42
5551 0704	40	M40x1,5	16,0	58,4	32,7	59,0	56	52
5551 0705	50	M50x1,5	16,0	62,5	37,7	65,0	62	59
5551 0706	63	M63x1,5	16,0	62,5	49,0	73,7	73,7	72

Creator: MAU1/PDP Released: DAMU1/PDP	Document: DB55510700EN Version: 02	Page 2 of 2
------------------------------------------	---------------------------------------	-------------