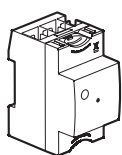


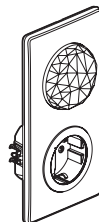
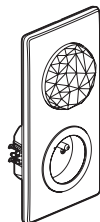
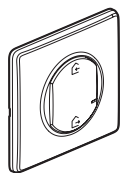
Requires you to buy and install the «... with Netatmo» connected starter pack

Gateway power outlet Control and Home/Away wireless
Master control

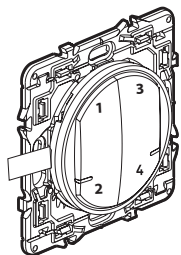
Control Module



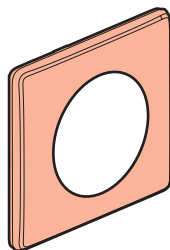
OR



Pack contents



Wireless 4 scenes control



Finishing plate

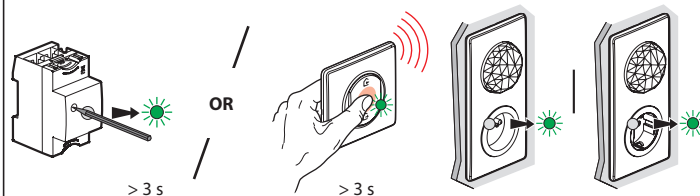
x 4

Removable stickers

Frequency bands: 2.4 - 2.4835 GHz
Power level: < 100 mW

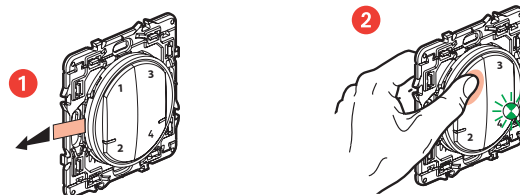
LE11968

① Start the wireless 4 scenes control configuration



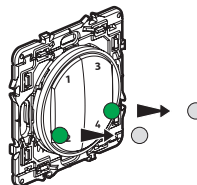
Press the middle of the wireless master switch **until** its light briefly turns green, **and then stop pressing**. The indicator lights on the products which you have wired will turn green.

② Prepare the wireless 4 scenes control



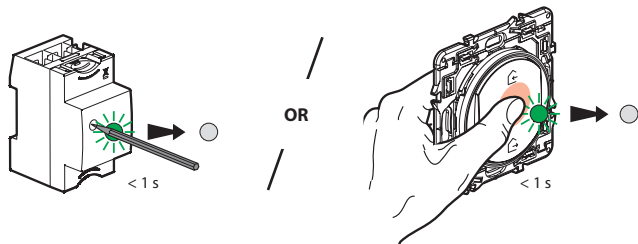
Remove the battery's protective strip

Briefly press one of the button of the wireless control to activate it. The indicator lights will flash green and then switch off.



The 2 indicator lights will flash green and then switch off.
Your wireless control is ready.

3 Complete the configuration



To complete your installation, briefly press the configuration button of the **Control Modul** or in the middle of the **wireless master switch**.

All the indicator lights on the products switch off.

Personalize your scenes

from **Legrand Home + Control app** (Settings / Scenarios menu)
Let yourself be guided

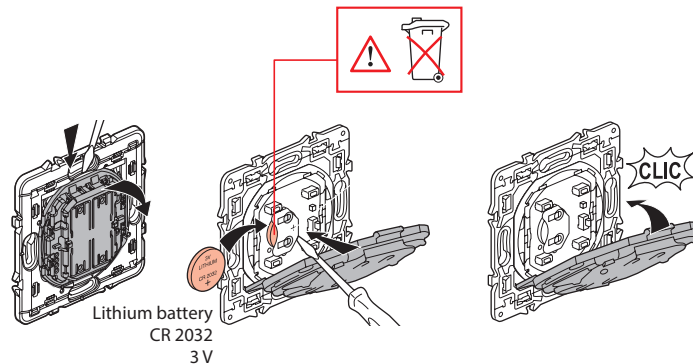
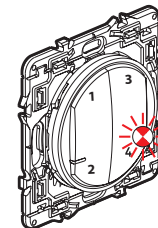


www.legrand.fr

LEGRAND - Pro and Consumer Service - BP 30076
87002 LIMOGES CEDEX FRANCE • www.legrand.com

Battery replacement

If the led flashes 3 times in red when pressing a button -> **battery is low**



SIMPLIFIED EU DECLARATION OF CONFORMITY

The undersigned,

Legrand

declares that the radio-electric equipment referred to in these instructions complies with directive 2014/53/EU.

The full text of the EU declaration of conformity is available on the following website :

www.legrandoc.com